

Connectorized Amplifier

ZX60-2531MA+

50Ω 0.5 to 2.5 GHz

Features

- From 2.8V to 5V operation
- High directivity, 27 dB typ.
- Wide bandwidth, 0.5 to 2.5 GHz
- Low noise figure, 2.9 dB typ.
- Output power, up to 19 dBm typ.
- Protected by US patent 6,790,049

Applications

- Buffer amplifier
- Cellular
- PCN
- Lab
- Instrumentation
- Test equipment



CASE STYLE: GA955

Connectors	Model
SMA	ZX60-2531MA-S+

+RoHS Compliant

The +Suffix identifies RoHS Compliance. See our web site for RoHS Compliance methodologies and qualifications

Electrical Specifications at T_{AMB} = 25°C

MODEL NO.	FREQ. (GHz) f _L - f _U	DC VOLTAGE @ Pin V+ (V)	GAIN over frequency in GHz Typ (dB)						MAXIMUM POWER (dBm) Output (1 dB Comp.) Typ. f _L f _U		DYNAMIC RANGE			VSWR (:1) Typ.		ACTIVE DIRECTIVITY (dB) Isolation-Gain Typ.	DC OPERATING CURRENT @ Pin V+ (mA)	
			0.5	1.0	1.5	2.0	2.5	Min.at 2 GHz	NF (dB) Typ.	IP3 (dBm) Typ.		1.5-2.5 GHz In Out		Typ.	Typ.		Max.	
									1GHz	1GHz	2GHz							
ZX60-2531MA+	0.5-2.5	5.0	37	41.5	41	39	37	33	19	17	2.9	24	26	1.3	1.5	24	102	130
		2.8	34	37	36	34	32	-	10	11	3.1	19	22	1.3	1.7	27		

Maximum Ratings

Operating Temperature -40°C to 80°C case

Storage Temperature -55°C to 100°C

DC Voltage 7V

Input Power (no damage) -15dBm

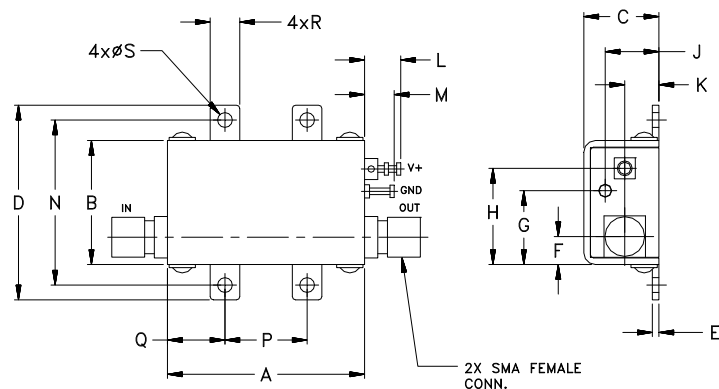
Power Dissipation 500mW

Permanent damage may occur if any of these limits are exceeded.



NOTE: When soldering the DC connections, caution must be used to avoid overheating the DC terminals. See Application Note AN-40-10.

Outline Drawing



Outline Dimensions (inch/mm)

A	B	C	D	E	F	G	H	J	K	L	M	N	P	Q	R	S	wt.
1.20	.75	.46	1.18	.04	.17	.45	.59	.33	.21	.22	.18	1.00	.50	.35	.18	.106	grams
30.48	19.05	11.68	29.97	1.02	4.32	11.43	14.99	8.38	5.33	5.59	4.57	25.40	12.70	8.89	4.57	2.69	35.0

Notes

- Performance and quality attributes and conditions not expressly stated in this specification document are intended to be excluded and do not form a part of this specification document.
- Electrical specifications and performance data contained in this specification document are based on Mini-Circuit's applicable established test performance criteria and measurement instructions.
- The parts covered by this specification document are subject to Mini-Circuits standard limited warranty and terms and conditions (collectively, "Standard Terms"); Purchasers of this part are entitled to the rights and benefits contained therein. For a full statement of the Standard Terms and the exclusive rights and remedies thereunder, please visit Mini-Circuits' website at www.minicircuits.com/MCLStore/terms.jsp



www.minicircuits.com P.O. Box 350166, Brooklyn, NY 11235-0003 (718) 934-4500 sales@minicircuits.com

REV. OR
M160331
EDU2488
ZX60-2531MA+
URJ
170217
Page 1 of 3

Typical Performance Data at 25°C

ZX60-2531MA+

V+ = 5.0V

FREQUENCY (MHz)	GAIN (dB)	DIRECTIVITY (dB)	VSWR IN (:1)	VSWR OUT (:1)	POWER OUT @1dB COMPRESSION (dBm)	IP3 (dBm)	NF (dB)
500	37.09	31.59	3.16	1.56	18.92	29.29	3.33
550	38.42	22.68	2.86	1.45	19.20	28.38	3.32
600	39.30	29.15	2.68	1.35	19.30	27.14	3.21
650	39.90	29.32	2.51	1.28	19.15	26.15	3.15
700	40.33	34.45	2.35	1.21	19.37	26.06	3.12
800	40.82	26.29	2.09	1.16	19.42	25.05	2.97
900	41.16	21.34	1.91	1.17	19.30	25.05	2.86
1000	41.40	24.62	1.74	1.20	19.26	24.2	2.83
1100	41.54	21.79	1.62	1.23	18.85	23.91	2.80
1300	41.45	24.15	1.41	1.26	18.71	24.05	2.95
1400	41.23	18.27	1.33	1.26	18.68	24.1	2.91
1500	40.90	26.12	1.26	1.24	18.78	24.84	2.96
1600	40.50	25.94	1.21	1.25	18.22	24.6	2.89
1800	39.58	20.03	1.11	1.24	18.08	25.59	2.83
2000	38.63	25.40	1.06	1.27	18.01	26.45	2.82
2200	37.74	18.99	1.02	1.34	17.75	27.02	2.75
2300	37.33	20.40	1.01	1.38	17.45	27.33	2.78
2400	36.91	22.75	1.01	1.42	17.26	27.48	2.81
2450	36.71	19.32	1.02	1.44	17.23	27.58	2.80
2500	36.49	20.04	1.03	1.46	16.89	27.7	2.80

V+ = 2.8V

FREQUENCY (MHz)	GAIN (dB)	DIRECTIVITY (dB)	VSWR IN (:1)	VSWR OUT (:1)	POWER OUT @1dB COMPRESSION (dBm)	IP3 (dBm)	NF (dB)
500	33.69	34.22	3.12	1.69	9.56	18.92	3.40
550	34.84	35.99	2.80	1.62	9.82	18.92	3.40
600	35.60	33.95	2.55	1.58	10.22	19.41	3.34
650	36.11	28.51	2.34	1.57	10.33	19.44	3.31
700	36.47	27.92	2.18	1.57	10.39	19.16	3.27
800	36.85	32.24	1.93	1.60	10.84	19.28	3.21
900	37.04	25.11	1.75	1.66	10.56	19.38	3.08
1000	37.09	38.47	1.62	1.71	10.69	19.16	3.10
1100	37.03	26.40	1.51	1.74	10.74	19.58	3.08
1300	36.63	22.41	1.34	1.77	10.62	20.23	3.14
1400	36.31	25.06	1.28	1.76	10.88	20.59	3.13
1500	35.93	23.14	1.22	1.73	10.66	20.85	3.18
1600	35.51	23.16	1.17	1.71	10.92	21.34	3.14
1800	34.61	22.26	1.11	1.66	10.98	21.41	3.15
2000	33.69	21.48	1.07	1.62	11.23	21.47	3.16
2200	32.80	23.99	1.07	1.61	11.15	21.61	3.17
2300	32.37	23.35	1.07	1.61	11.14	21.6	3.17
2400	31.93	27.38	1.08	1.61	11.09	21.69	3.19
2450	31.71	26.86	1.08	1.61	11.20	21.87	3.23
2500	31.49	24.91	1.09	1.62	11.18	22.03	3.24

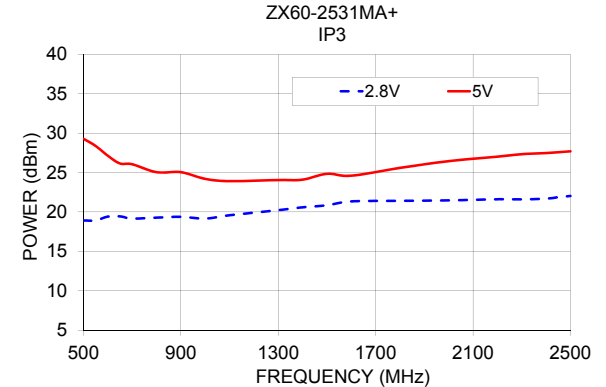
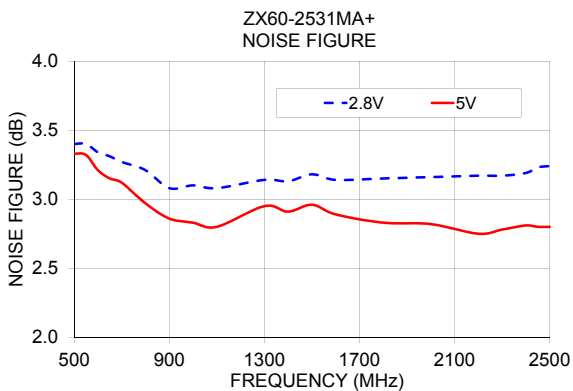
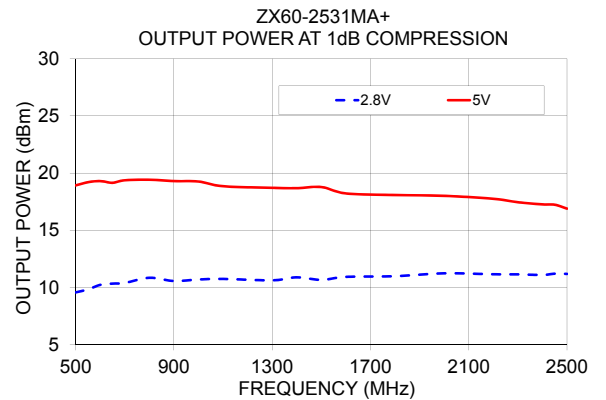
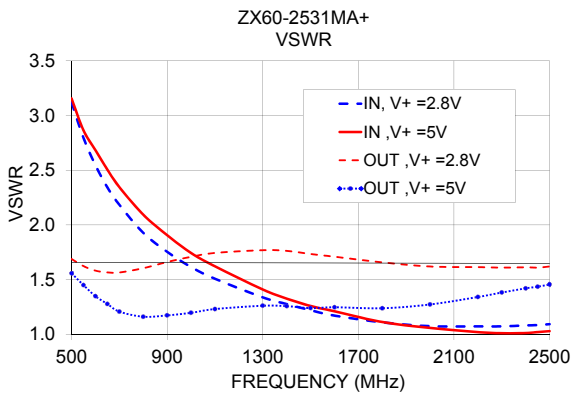
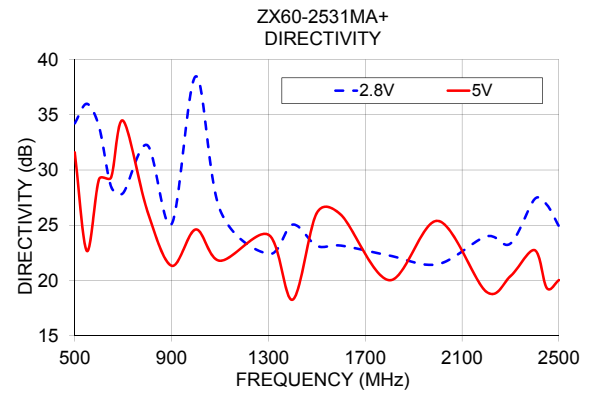
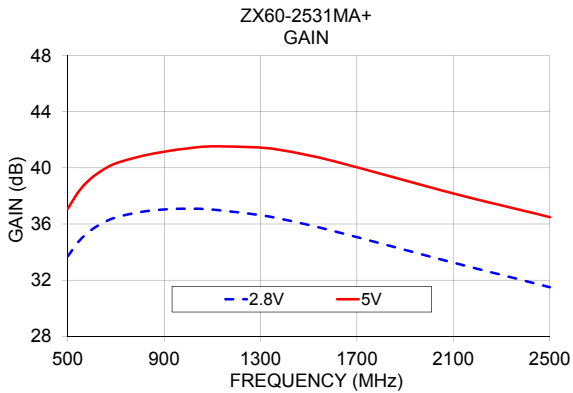
Notes

- A. Performance and quality attributes and conditions not expressly stated in this specification document are intended to be excluded and do not form a part of this specification document.
- B. Electrical specifications and performance data contained in this specification document are based on Mini-Circuit's applicable established test performance criteria and measurement instructions.
- C. The parts covered by this specification document are subject to Mini-Circuits standard limited warranty and terms and conditions (collectively, "Standard Terms"); Purchasers of this part are entitled to the rights and benefits contained therein. For a full statement of the Standard Terms and the exclusive rights and remedies thereunder, please visit Mini-Circuits' website at www.minicircuits.com/MCLStore/terms.jsp



Typical Performance Curves at 25 °C

ZX60-2531MA+



Notes

- A. Performance and quality attributes and conditions not expressly stated in this specification document are intended to be excluded and do not form a part of this specification document.
- B. Electrical specifications and performance data contained in this specification document are based on Mini-Circuit's applicable established test performance criteria and measurement instructions.
- C. The parts covered by this specification document are subject to Mini-Circuits standard limited warranty and terms and conditions (collectively, "Standard Terms"); Purchasers of this part are entitled to the rights and benefits contained therein. For a full statement of the Standard Terms and the exclusive rights and remedies thereunder, please visit Mini-Circuits' website at www.minicircuits.com/MCLStore/terms.jsp




Looking for pricing, stock, or lifecycle information?

Click below to explore more details on WIN SOURCE:

 [View ZX60-2531MA-S+ on WIN SOURCE](#)

 [Mini-Circuits Information](#)

Optimize Your Supply Chain with WIN SOURCE Solutions

-  Global Sourcing Solution
-  Obsolete Management
-  Cost Control Management
-  Shortage Management
-  Alternative Solution
-  Excess Inventory Management