

Device Features

- OIP3 = 35.0 dBm @ 900 MHz
- Gain = 20.5 dB @ 900 MHz
- Output P1 dB = 21.0 dBm @ 900 MHz
- 2.7dB Typical N.F
- Highly Reliable InGaP/GaAs HBT Technology
- RoHS2-compliant SOT-89 SMT package



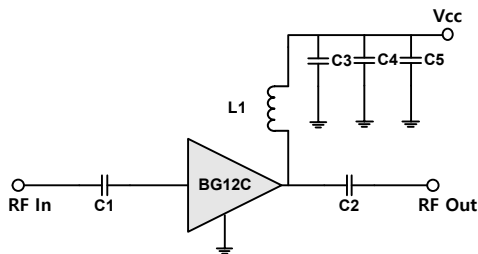
Product Description

BeRex's BG12C is a high performance InGaP/ GaAs HBT MMIC amplifier, internally matched to 50 Ohms and uses a patented **temperature compensation** circuit to provide stable current over the operating temperature range without the need for external components. The BG12C is designed for high linearity gain block applications that require excellent gain flatness. It is packaged in a RoHS2-compliant with SOT-89 surface mount package.

Applications

- Base station Infrastructure/RFID
- Commercial/Industrial/Military wireless system

Applications Circuit



*C1, C2, C3 = 20pF ± 5%; C4 = 1nF ± 5%; C5 = 10uF; L1 = 22nH ± 5%

*Less than 22nH(L1) improves RF performance at over 0.9GHz.

*C1, C2, C3, C4 = 1nF ± 5%; C5 = 10uF; L1 = 1uH

*More than 1uH(L1) improves RF performance at under 0.5GHz.

*L1:18nH, C1&C2:10pF for 3.5GHz Application.

Electrical Specifications

Device performance _ measured on a BeRex evaluation board at 25°C, Vc=5V, 50 Ω system.

Parameter	Conditions	Min	Typ	Max	Unit
Operational Frequency Range		50		4000	MHz
Test Frequency			900		MHz
Gain		19.0	20.5		dB
Input Return Loss			-18.0		dB
Output Return Loss			-25.0		dB
Output IP3	7 dBm / tone , Δf=1 MHz	32.0	35.0		dBm
Output P1dB		20.0	21.0		dBm
Noise Figure			2.6		dB

Recommended Operating Conditions

Parameter	Min	Typ	Max	Unit
Bandwidth	50		4000	MHz
I _c @ (V _c = 5V)	54	67	80	mA
V _c	4.5	5	5.25	V
dG/dT		-0.002		dB/°C
R _{TH}		59.0		°C/W
Operating Case Temperature	-40		+85	°C

Electrical specifications are measured at specified test conditions.

Specifications are not guaranteed over all recommended operating conditions.

Absolute Maximum Ratings

Parameter	Rating	Unit
Storage Temperature	-55 to +155	°C
Junction Temperature	+170	°C
Supply Voltage	+6.0	V
Supply Current	120	mA
Input RF Power	23	dBm

Operation of this device above any of these parameters may result in permanent damage.

50-4000 MHz Cascadable InGaP HBT Gain Block

Typical Performance (Vc = 5V, Ic = 67mA, T = 25°C)

Freq	MHz	70	500	900	1900	2140	2450	3500
S21	dB	21.5	20.5	20.5	18.5	18.0	17.5	16.1
S11	dB	-18.0	-28.5	-18.0	-23.5	-23.0	-22.0	-13.7
S22	dB	-25.0	-20.5	-25.0	-18.5	-18.0	-19.0	-33.8
P1	dBm	20.0	21.0	21.0	20.0	19.0	18.0	15.5
OIP3	dBm	36.0	35.5	35.0	33.0	32.0	31.0	27.2
NF	dB	2.6	2.6	2.6	2.7	2.8	2.8	2.8

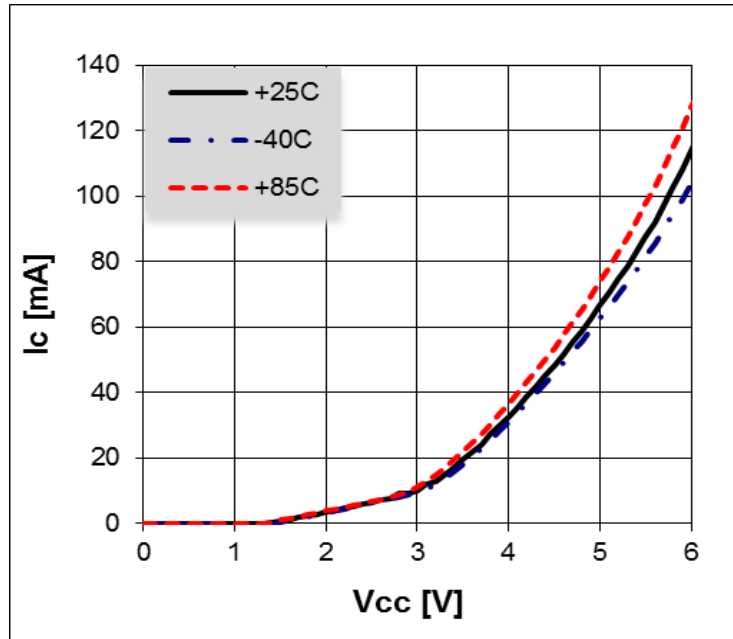
Typical Performance (Vc = 4.7V, Ic = 56mA, T = 25°C)

Freq	MHz	70	500	900	1900	2140	2450
S21	dB	21.0	20.5	20.0	18.5	18.0	17.5
S11	dB	-17.5	-26.5	-17.5	-24.0	-24.0	-23.5
S22	dB	-24.5	-20.0	-24.0	-18.0	-17.5	-18.0
P1	dBm	18.5	19.0	19.0	18.5	18.0	17.5
OIP3	dBm	33.5	33.0	32.5	31.5	31.0	30.0
NF	dB	2.5	2.5	2.5	2.5	2.6	2.7

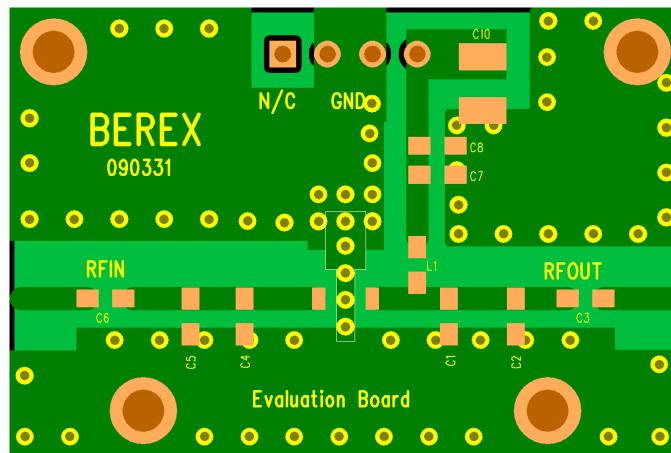
Typical Performance (Vc = 4.5V, Ic = 49mA, T = 25°C)

Freq	MHz	70	500	900	1900	2140	2450
S21	dB	21.0	20.5	20.2	18.5	18.0	17.5
S11	dB	-17.0	-25.0	-17.0	-24.5	-24.0	-23.0
S22	dB	-23.5	-20.0	-24.0	-18.0	-17.5	-17.5
P1	dBm	18.0	18.0	17.5	17.5	17.5	16.5
OIP3	dBm	31.0	31.0	30.5	30.5	30.0	29.0
NF	dB	2.5	2.5	2.5	2.5	2.6	2.6

V-I Characteristics



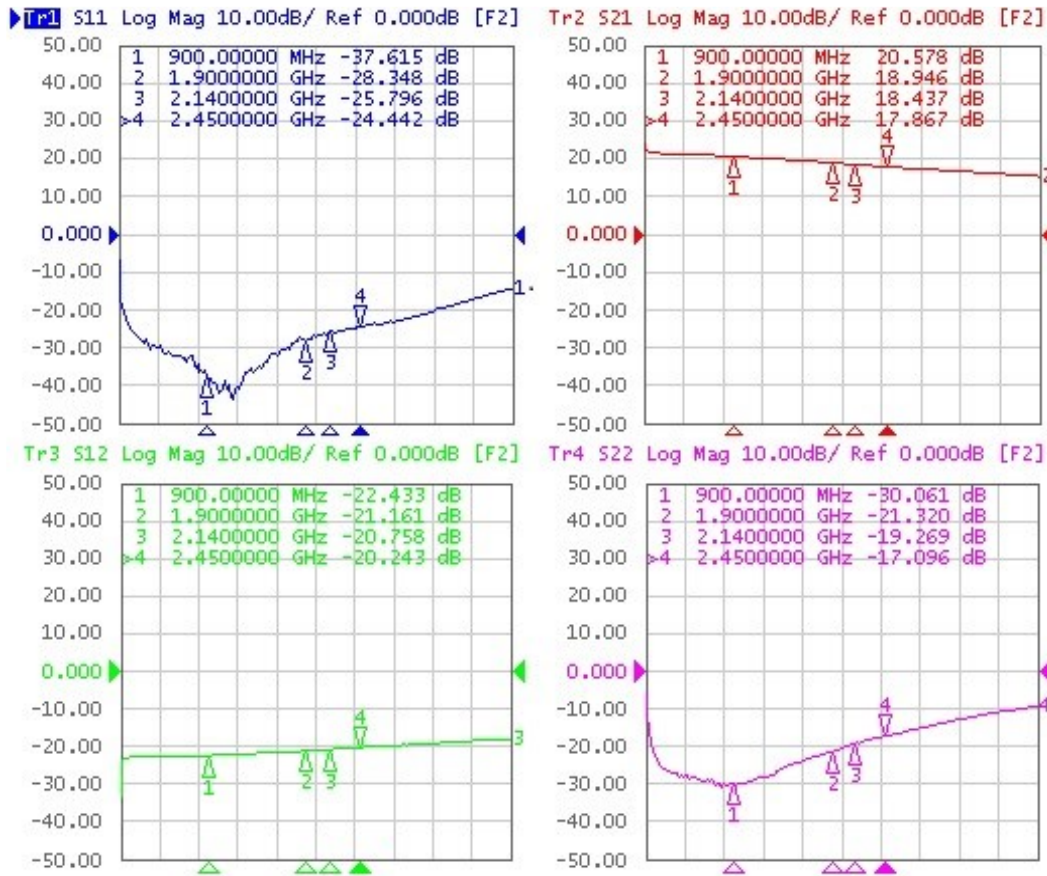
BeRex SOT89 Evaluation Board



*Dielectric constant _ 4.2 *RF pattern width 52mil *31mil thick FR4 PCB

Typical Device Data

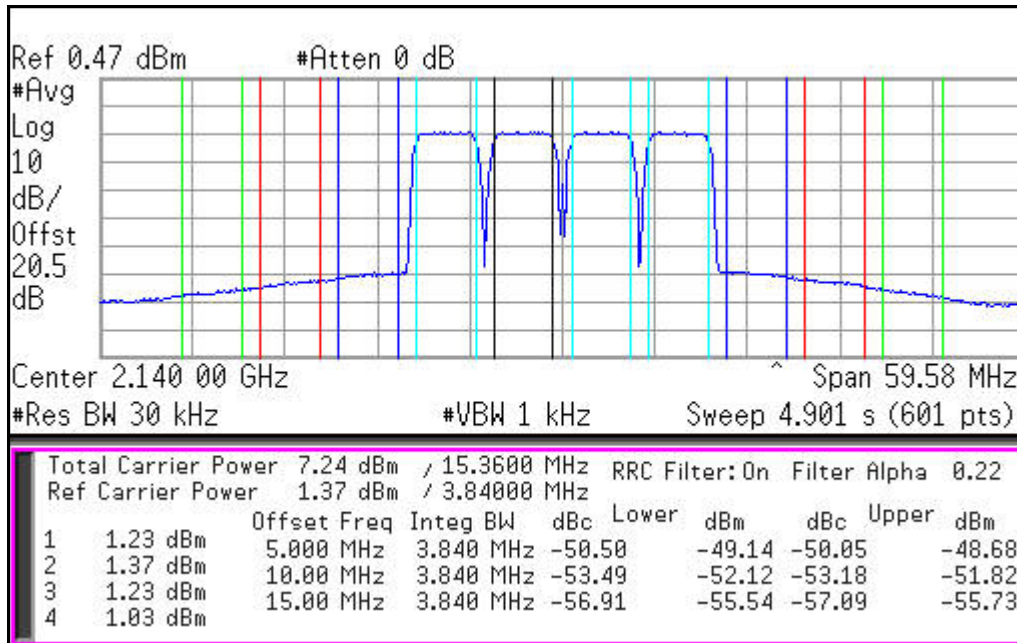
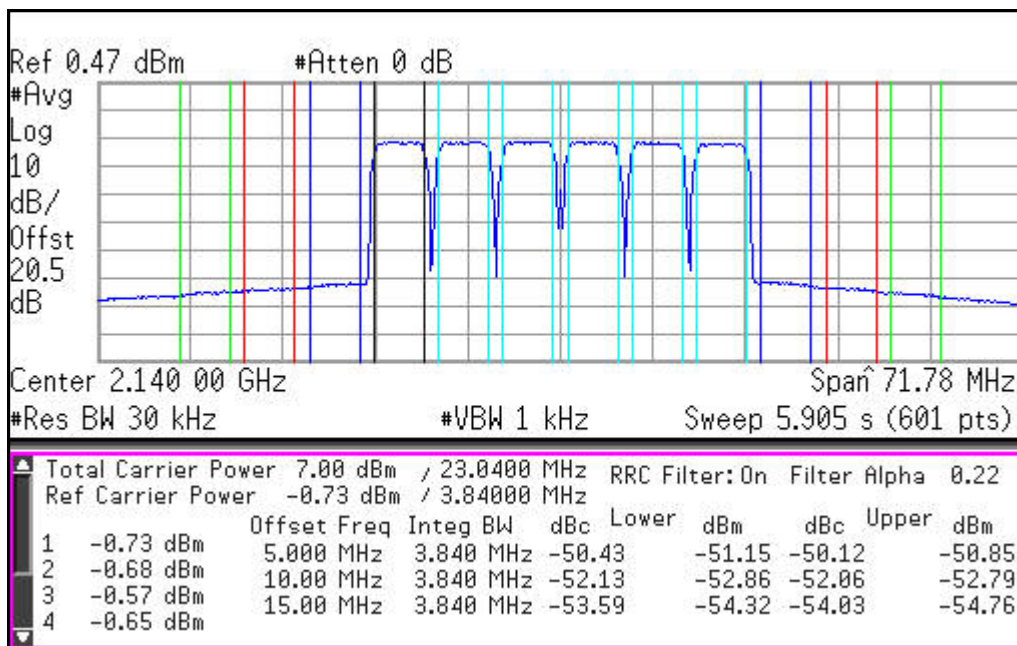
S-parameters (Vc=5V, Ic=67mA, T=25°C)

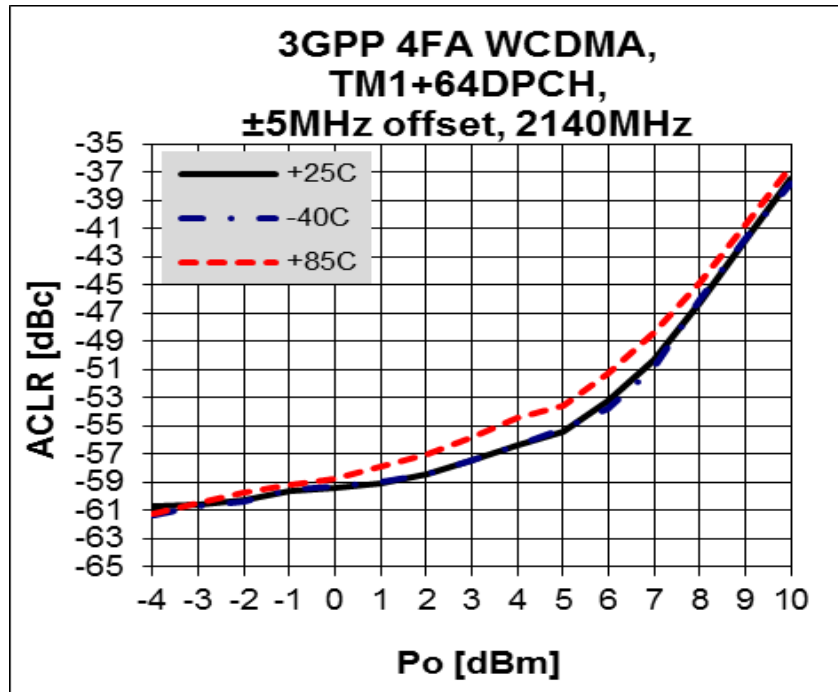


S-Parameter

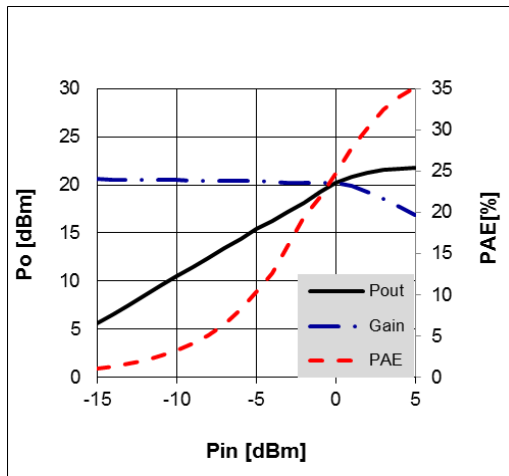
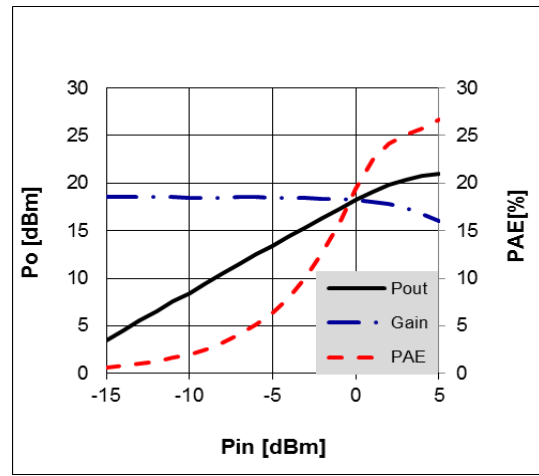
(Vdevice = 5.0V, Icc = 67mA, T = 25 °C, calibrated to device leads)

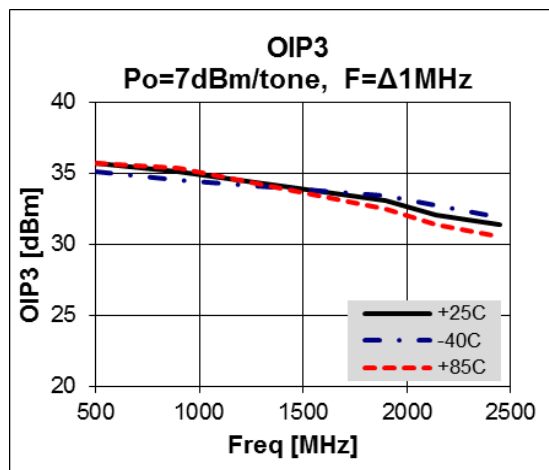
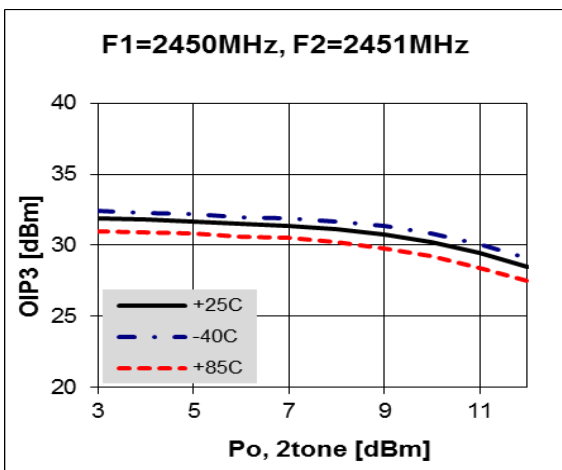
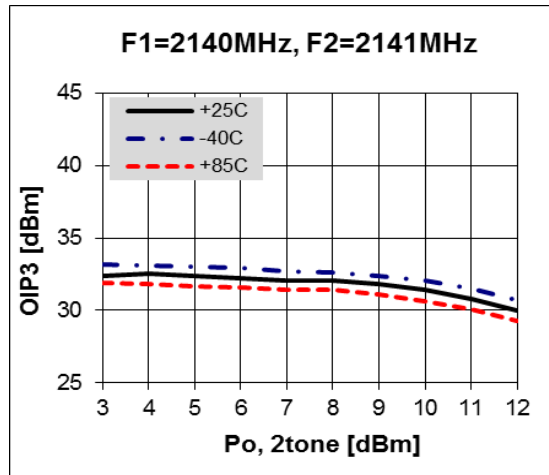
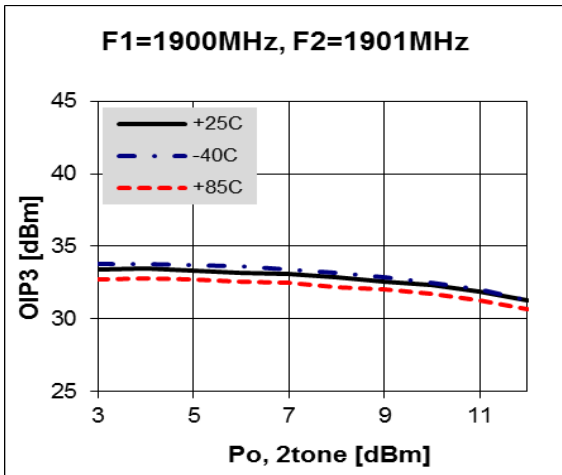
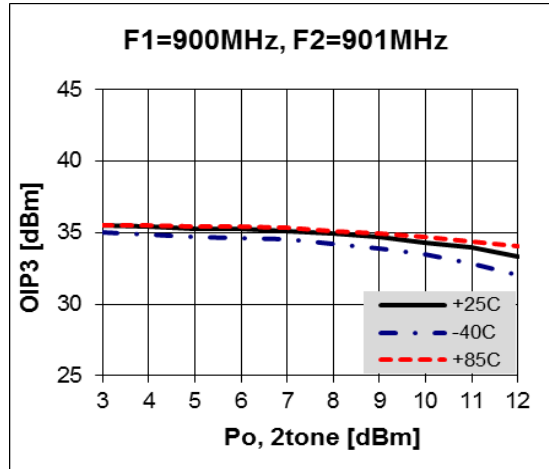
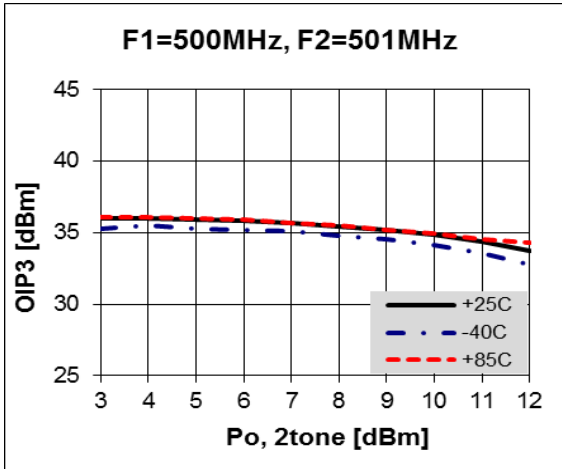
Freq [MHz]	S11 Mag	S11 Ang	S21 Mag	S21 Ang	S12 Mag	S12 Ang	S22 Mag	S22 Ang
100	0.920	-30.2	2.573	-61.8	0.015	131.4	0.953	-75.3
500	0.299	-106.9	10.764	150.0	0.069	-0.7	0.230	79.8
1000	0.102	-167.1	10.362	65.1	0.075	-61.6	0.029	-1.9
1500	0.054	76.4	9.289	-4.4	0.079	-109.8	0.082	66.7
2000	0.068	15.8	8.235	-68.4	0.085	-155.9	0.123	17.7
2500	0.083	7.7	7.388	-129.6	0.091	157.6	0.106	-22.3
3000	0.133	-15.3	6.724	170.2	0.097	110.1	0.067	-55.0
3500	0.153	-68.7	6.093	109.7	0.104	60.5	0.043	-142.4
4000	0.160	-161.7	5.554	48.1	0.110	8.7	0.164	113.7

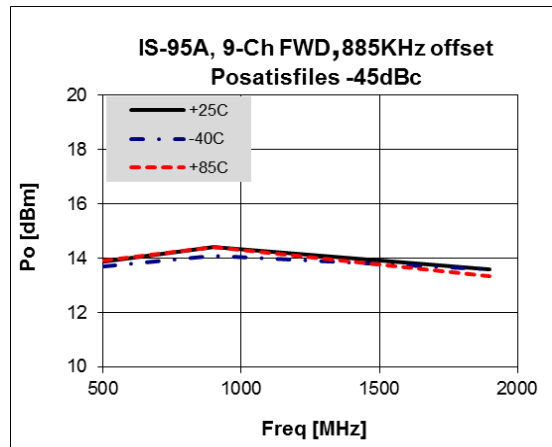
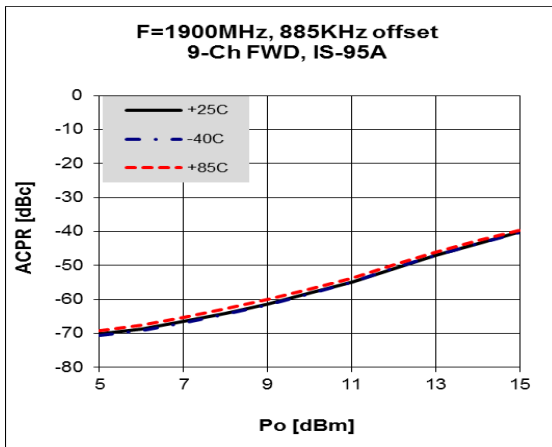
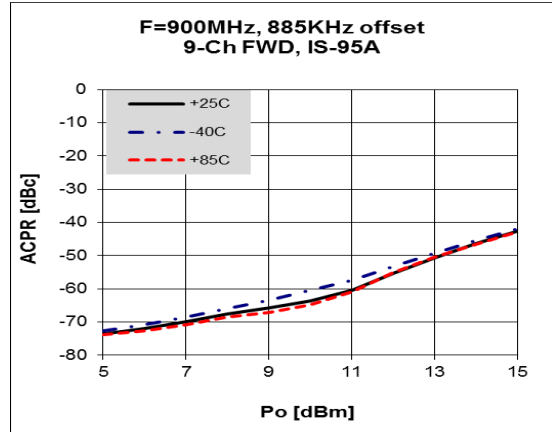
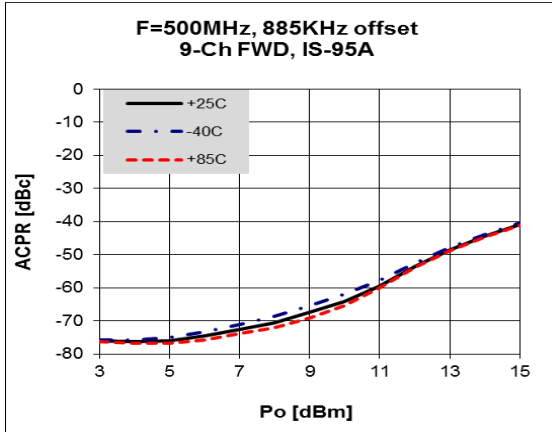
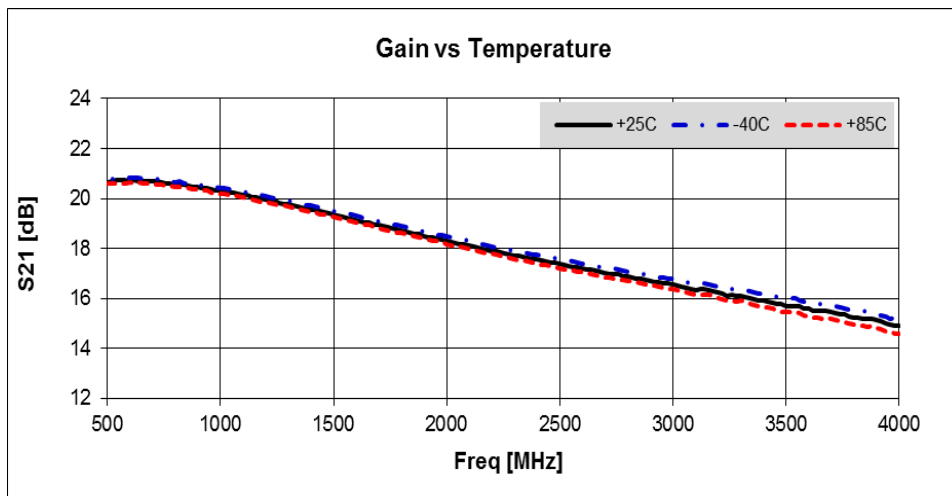
WCDMA 4FA 2140 -50dBc

WCDMA 6FA 2140 -50dBc


ACLR

Device Performance

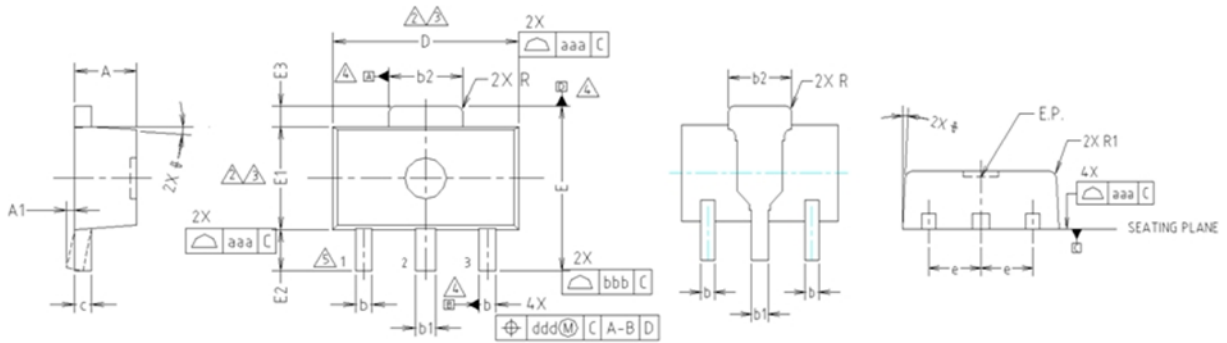
(Vc=5V, Ic=67mA, T=25°C)

Pin-Pout-Gain

900MHz

1900 MHz

OIP3


ACPR

Gain Flatness


Package Outline Dimension

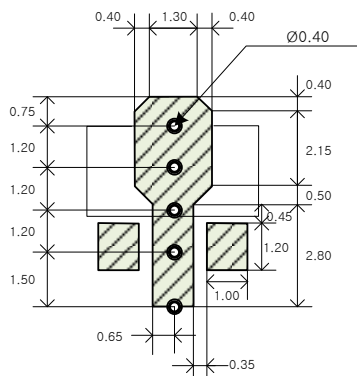


- NOTE:**
 1. DIMENSIONS IN MILLIMETERS.
- ⚠ DIMENSION D DOES NOT INCLUDE MOLD FLASH, PROTRUSIONS OR GATE BURRS. MOLD FLASH, PROTRUSIONS OR GATE BURRS SHALL NOT EXCEED 0.5mm PER END. DIMENSION E1 DOES NOT INCLUDE INTERLEAD FLASH OR PROTRUSION. INTERLEAD FLASH OR PROTRUSION SHALL NOT EXCEED 0.5mm PER SIDE.
 - ⚠ DIMENSIONS D AND E1 ARE DETERMINED AT THE OUTMOST EXTREMES OF THE PLASTIC BODY EXCLUSIVE OF MOLD FLASH, TIE BAR BURRS, GATE BURRS AND INTERLEAD FLASH, BUT INCLUDING ANY MISMATCH BETWEEN THE TOP AND BOTTOM OF THE PLASTIC BODY.
 - ⚠ DATUMS A, B AND D TO BE DETERMINED 0.18mm FROM THE LEAD TIP.
 - ⚠ TERMINAL NUMBERS ARE SHOWN FOR REFERENCE ONLY.

SYMBOL	MILLIMETERS			NOTE
	MINIMUM	NOMINAL	MAXIMUM	
A	1.40	1.50	1.60	
A1	0.00	—	0.10	
b	0.38	0.42	0.48	
b1	0.48	0.52	0.58	
b2	1.79	1.82	1.87	
c	0.40	0.42	0.46	
D	4.40	4.50	4.70	2,3
E	3.70	4.00	4.30	
E1	2.40	2.50	2.70	2,3
E2	0.80	1.00	1.20	
E3	0.40	0.50	0.60	
e	1.50 TYP.			
φ	4° TYP.			
R	0.15 TYP.			
R1	—	—	0.20	
SYMBOL	TOLERANCES OF FORM AND POSITION		NOTE	
aaa	0.15			
bbb	0.20			
ccc	0.10			
ddd	0.10			

Suggested PCB Land Pattern and PAD Layout

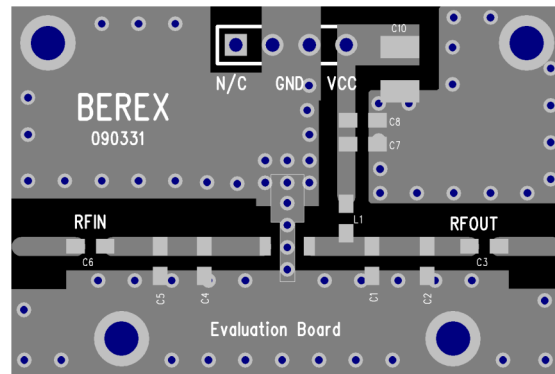
PCB Land Pattern



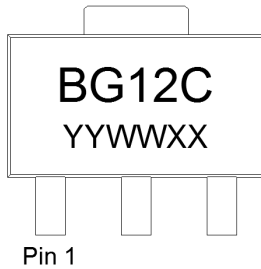
Note : All dimension _ millimeters

PCB lay out _ on BeRex website

PCB Mounting



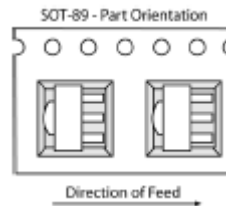
Package Marking



YY = Year, WW = Working Week,
XX = Wafer No.

Tape & Reel

SOT89



Packaging information:

Tape Width (mm): 12
Reel Size (inches): 7
Device Cavity Pitch (mm): 8
Devices Per Reel: 1000

Lead plating finish

100% Tin Matte finish

(All BeRex products undergoes a 1 hour, 150 degree C, Anneal bake to eliminate thin whisker growth concerns.)

MSL / ESD Rating

ESD Rating:	Class 2
Value:	Passes <4000V
Test:	Human Body Model (HBM)
Standard:	JEDEC Standard JESD22-A114
MSL Rating:	Level 1 at +260°C convection reflow
Standard:	JEDEC Standard J-STD-020



Proper ESD procedures should be followed when handling this device.

RoHS Compliance

This part is compliant with Restrictions on the Use of Certain Hazardous Substances in Electrical and Electronic Equipment (RoHS) Directive 2011/65/EU as amended by Directive 2015/863/EU.



This product also is compliant with a concentration of the Substances of Very High Concern (SVHC) candidate list which are contained in a quantity of less than 0.1%(w/w) in each components of a product and/or its packaging placed on the European Community market by the BeRex and Suppliers.

NATO CAGE code:

2	N	9	6	F
---	---	---	---	---

Looking for pricing, stock, or lifecycle information?

Click below to explore more details on WIN SOURCE:

-  [View BG12C on WIN SOURCE](#)
-  [BeRex Corporation](#) Information

Optimize Your Supply Chain with WIN SOURCE Solutions

-  Global Sourcing Solution
-  Obsolete Management
-  Cost Control Management
-  Shortage Management
-  Alternative Solution
-  Excess Inventory Management