

Product Overview

The SBB1089Z is a high performance InGaP HBT MMIC amplifier utilizing a Darlington configuration with an active bias network. The active bias network provides stable current over temperature and process Beta variations. Designed to run directly from a 5V supply, the SBB1089Z does not require a dropping resistor as compared to typical Darlington amplifiers. The SBB1089Z product is designed for high linearity 5V gain block applications that require small size and minimal external components. It is internally matched to 50Ω.

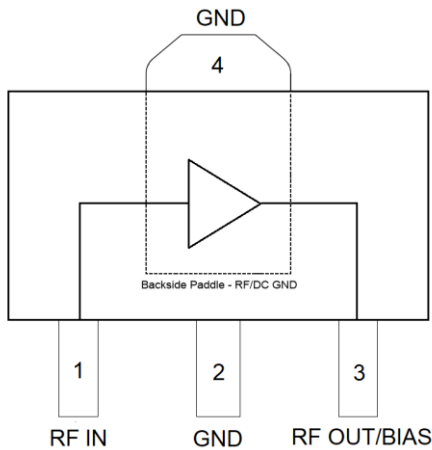


3-pin SOT-89 Package

Key Features

- 50MHz – 850MHz Operational Frequency
- OIP3 = +43.1dBm at 240MHz
- P1dB = +19.6dBm at 500MHz
- Single Fixed 5V Supply
- Robust 1000V ESD, Class 1C
- Patented Thermal Design and Bias Circuit
- Low Thermal Resistance

Functional Block Diagram



Top View

Applications

- Receiver IF Amplifier
- Cellular, PCS, GSM, UMTS
- Wireless Data, Satellite Terminals

Ordering Information

| Part No. | Description |
|--------------|--|
| SBB1089Z | 7" Reel with 1000 pieces |
| SBB1089ZPCK1 | 50MHz to 850MHz PCBA with 5-piece sample bag |

Absolute Maximum Ratings

| Parameter | Rating |
|--|---------------|
| Storage Temperature | -55 to 150 °C |
| RF Input Power, CW, 50 Ω, T=+25 °C | +24 dBm |
| Device Voltage (V _{CC}) | +5.5 V |
| Device Current (I _{CC}) | 110 mA |
| Power Dissipation | 0.61 W |
| Junction Temperature (T _J) | +150 °C |

Exceeding any one or a combination of the Absolute Maximum Rating conditions may cause permanent damage to the device.

Recommended Operating Conditions

| Parameter | Min | Typ | Max | Units |
|-----------------------------------|-----|-----|------|-------|
| Device Voltage (V _{CC}) | | +5 | +5.3 | V |
| T _{CASE} | -55 | | +105 | °C |

Electrical specifications are measured at specified test conditions. Specifications are not guaranteed over all recommended operating conditions. Application of conditions to the device outside the Recommended Operating Conditions may reduce device reliability and performance.

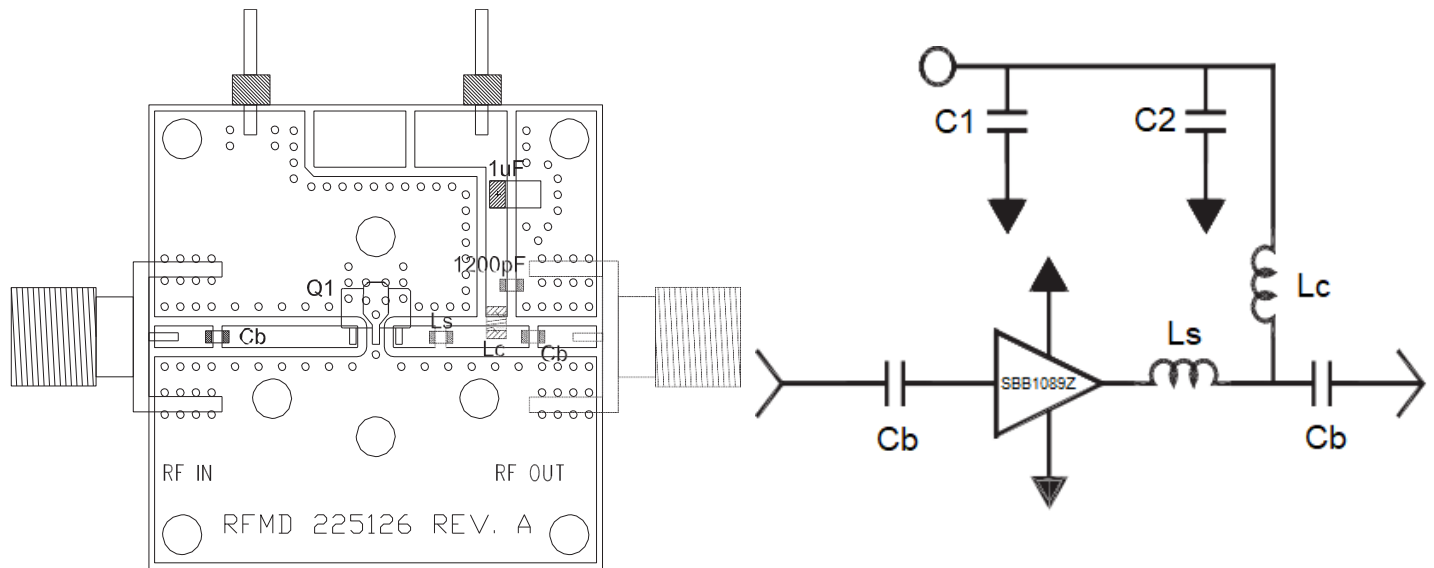
Electrical Specifications

| Parameter | Conditions ⁽¹⁾ | Min | Typ | Max | Units |
|-------------------------------------|---|-------|-------|-----|-------|
| Operational Frequency Range | | 50 | | 850 | MHz |
| Gain | 70MHz | | 15.5 | | dB |
| | 240MHz | 14 | 15.5 | 17 | dB |
| | 400MHz | 14 | 15.5 | 17 | dB |
| Input Return Loss | 70MHz to 5000MHz | 14 | 18 | | dB |
| Output Return Loss | 70MHz to 5000MHz | 12 | 16 | | dB |
| Output P1dB | 70MHz | | +19 | | dBm |
| | 240MHz | | +19 | | dBm |
| | 400MHz | +18 | +19 | | dBm |
| Output IP3 | P _{out} = 0 dBm/tone, Δf = 1 MHz, Center Freq.= 70MHz | | +42 | | dBm |
| | P _{out} = 0 dBm/tone, Δf = 1 MHz, Center Freq.= 240MHz | | +43 | | dBm |
| | P _{out} = 0 dBm/tone, Δf = 1 MHz, Center Freq.= 400MHz | +38.5 | +40.5 | | dBm |
| Noise Figure | 500MHz | | 3.5 | 4.2 | dB |
| Reverse Isolation | 70MHz to 5000MHz | | 18 | | dB |
| Device Operating Current | | 82 | 90 | 98 | mA |
| Thermal Resistance, θ _{JC} | Junction to case | | 48.8 | | °C/W |

Notes:

1. Test conditions unless otherwise noted: V_{CC} = +5.0 V, I_{CC} = 90mA, Temp= +25 °C, 50 Ω system.

Evaluation Board



Bill of Material

| Reference Des. | Value | Description | Manuf. | Part Number |
|----------------|---------|-----------------------------|-----------|----------------|
| n/a | n/a | Printed Circuit Board | Qorvo | |
| Q1 | n/a | Cascadable Amplifier | Qorvo | SBB1089Z |
| Cb | 8200 pF | CAP, 0603, 10%, 50V, X7R | various | |
| C1 | 1 uF | CAP, 1206, 20%, 20V, TANT-A | various | |
| C2 | 1200 pF | CAP, 0603, 10%, 50V, X7R | various | |
| Ls | 2.7 nH | IND, 0603, +/-0.3nH | Murata | LL1608-FSL2N7S |
| Lc | 1.2 uH | IND, 1008, 5% | Coilcraft | 1008LS-122XJLC |

Typical Performance

Test conditions unless otherwise noted: $V_{CC} = +5.0V$, $I_{CC} = 90mA$, $Temp = +25^{\circ}C$, 50Ω system.

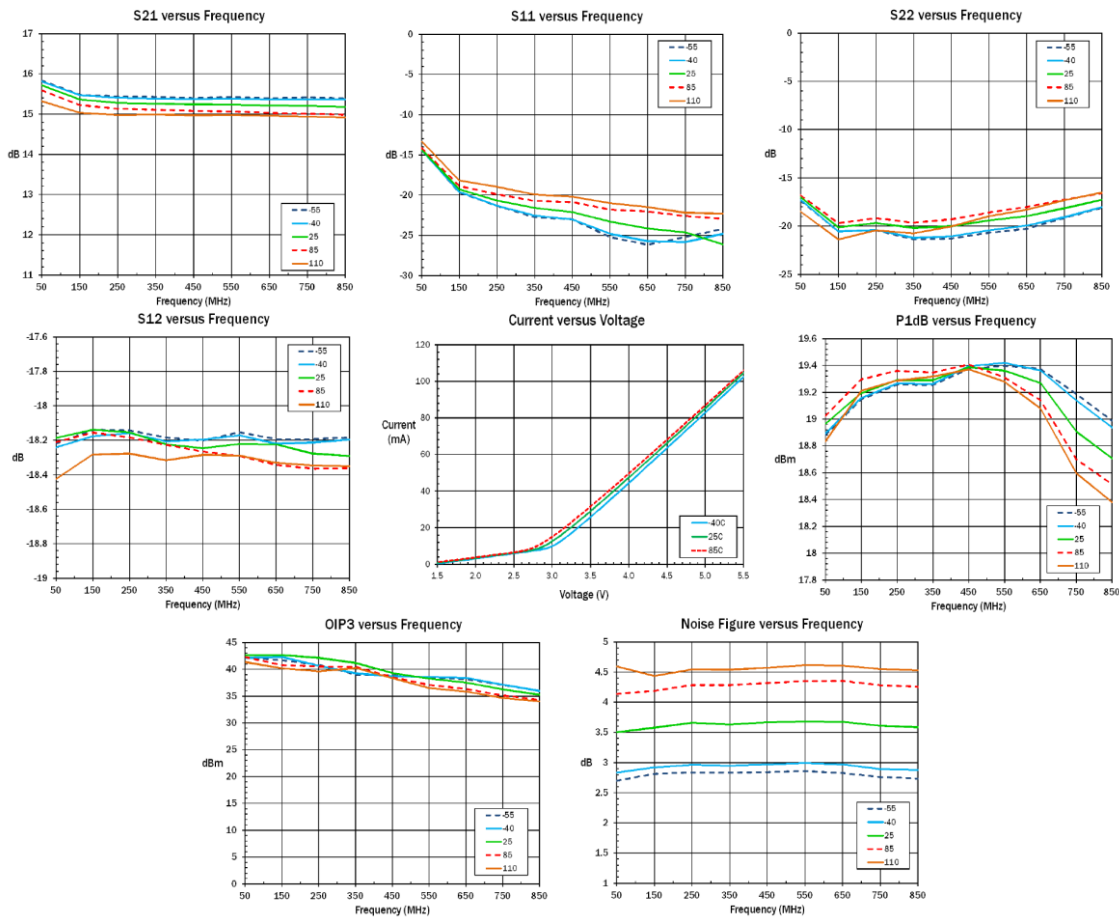
| Parameter | Typical Value | | | | | | | Units |
|---------------------|---------------|------|------|------|------|------|------|-------|
| Frequency | 50 | 70 | 100 | 240 | 400 | 500 | 850 | MHz |
| Gain | 16 | 15.5 | 15.5 | 15.5 | 15.5 | 15.5 | 15.5 | dB |
| Input Return Loss | 13 | 16 | 17 | 19 | 19 | 19 | 18 | dB |
| Output Return Loss | 18 | 20 | 21 | 23 | 24 | 23 | 17 | dB |
| Reverse Isolation | 18 | 18 | 18 | 18 | 18 | 18 | 18 | dB |
| Output P1dB | +19 | +19 | +19 | +19 | +19 | +19 | +18 | dBm |
| OIP3 ⁽¹⁾ | +41.5 | +42 | +43 | +43 | +41 | +40 | +35 | dBm |
| Noise Figure | 3.5 | 3.3 | 3.2 | 3.1 | 3.2 | 3.2 | 3.4 | dB |

Notes:

1. $P_{out} = 0$ dBm/tone, $\Delta f = 1$ MHz

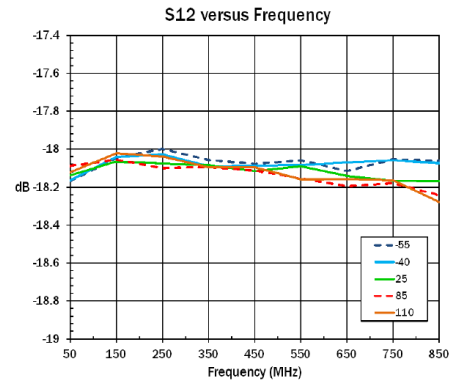
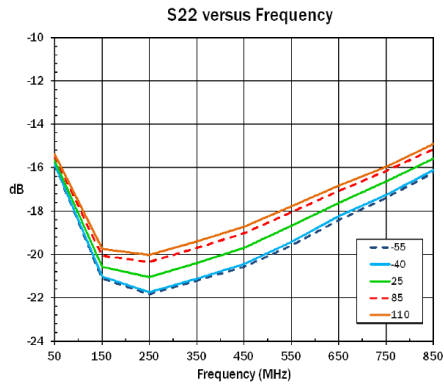
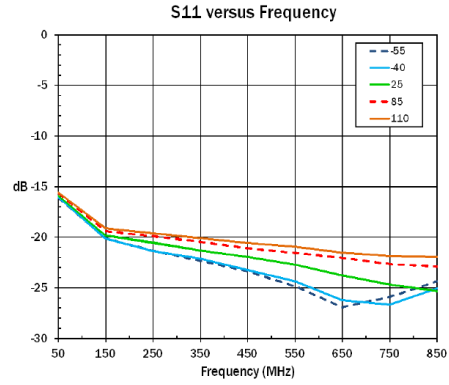
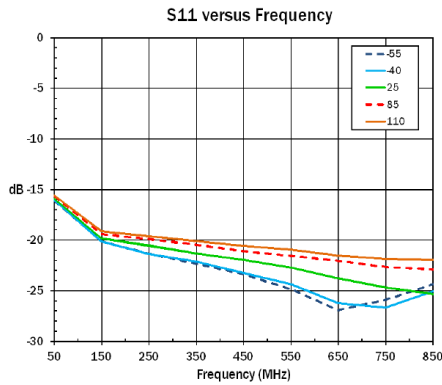
Performance Plots

Test conditions unless otherwise noted: $V_{CC} = +5.0V$, $I_{CC} = 90mA$, $Temp = +25^{\circ}C$, 50Ω system.

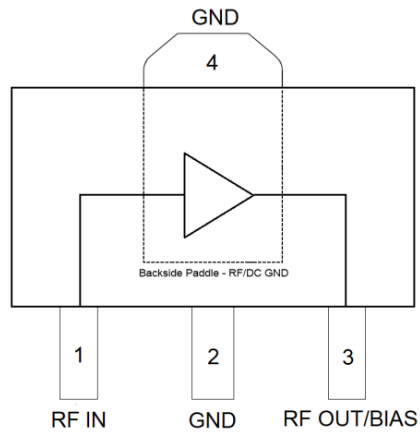


Performance Plots – with BIAS Tees

Test conditions unless otherwise noted: $V_{CC} = +5.0V$, $I_{CC} = 90mA$, $Temp = +25^{\circ}C$, 50Ω system.



Pin Configuration and Description

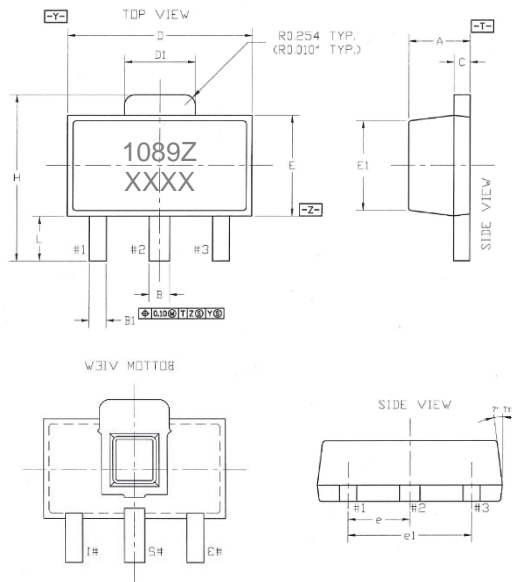


| Pin No. | Label | Description |
|---------|---------------|---|
| 1 | RF IN | RF input. External DC Block capacitor required. |
| 2, 4 | GND | RF/DC ground. Use recommended via hole pattern to minimize inductance and thermal resistance. See PCB Mounting Pattern for suggested footprint. |
| 3 | RF OUT / BIAS | RF output and DC Supply input. External DC Block capacitor and bias voltage required. |

Package Marking and Dimensions Outline A

Package Marking

Product ID: 1089Z
Trace Code: XXXX



| SYMBOL | Common | | | | | |
|--------|-----------------------|------|------|-----------------|-------|-------|
| | DIMENSIONS MILLIMETER | | | DIMENSIONS INCH | | |
| | MIN. | NOM. | MAX. | MIN. | NOM. | MAX. |
| A | 1.40 | 1.50 | 1.60 | 0.055 | 0.059 | 0.063 |
| B | 0.44 | 0.50 | 0.56 | 0.017 | 0.020 | 0.022 |
| B1 | 0.36 | 0.42 | 0.48 | 0.014 | 0.017 | 0.019 |
| C | 0.35 | 0.40 | 0.44 | 0.014 | 0.016 | 0.017 |
| D | 4.40 | 4.50 | 4.60 | 0.173 | 0.177 | 0.181 |
| D1 | 1.62 | 1.73 | 1.83 | 0.064 | 0.068 | 0.072 |
| E | 2.30 | 2.50 | 2.60 | 0.091 | 0.098 | 0.102 |
| E1 | 2.13 | 2.20 | 2.29 | 0.084 | 0.087 | 0.090 |
| e | 1.50 BSC. | | | 0.059 BSC. | | |
| e1 | 3.00 BSC. | | | 0.118 BSC. | | |
| H | 3.95 | 4.10 | 4.25 | 0.156 | 0.161 | 0.167 |
| L | 0.90 | 1.10 | 1.20 | 0.035 | 0.043 | 0.047 |

NOTES :

1. DIMENSIONING & TOLERANCING PER ANSI Y14.5M-1982
2. CONTROLLING DIMENSION : MILLIMETER CONVERTED INCH ARE NOT NECESSARILY EXACT.
3. DIMENSION B1, 2 PLACES.

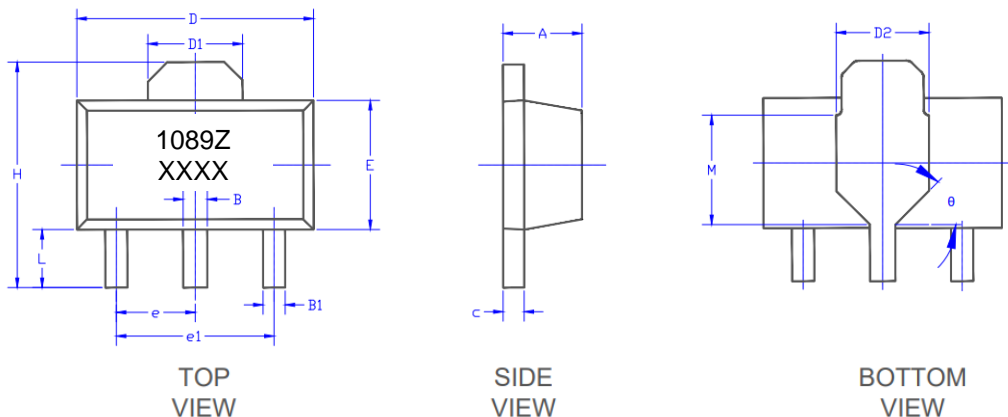
Notes:

1. All dimensions are in millimeters. Angles are in degrees.
2. Dimension and tolerance formats conform to ASME Y14.4M-1994.
3. The terminal #1 identifier and terminal numbering conform to JESD 95-1 SPP-012.
4. Trace code up to 4 characters to be assigned by sub-contractor.
5. Contact plating: NiPdAu
6. Either package dimensions outline A or B may be supplied.
7. This package outline is shipped as MSL5A.

Package Marking and Dimensions Outline B

Package Marking

Product ID: 1089Z
Trace Code: XXXX

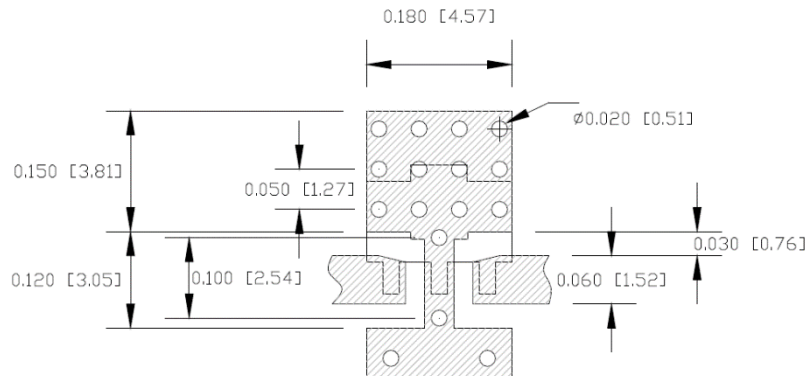


| Symbol | Dimensions In Millimeters | |
|--------|---------------------------|-------|
| | Min. | Max. |
| A | 1.400 | 1.600 |
| B | 0.400 | 0.580 |
| B1 | 0.320 | 0.520 |
| C | 0.350 | 0.440 |
| D | 4.400 | 4.600 |
| D1 | 1.550 REF. | |
| D2 | 1.600 REF. | |
| E | 2.300 | 2.600 |
| e | 1.500 TYP. | |
| e1 | 3.000 TYP. | |
| H | 3.940 | 4.250 |
| L | 0.900 | 1.200 |
| M | 1.900 REF. | |
| θ | 45° | |

Notes:

1. All dimensions are in millimeters. Angles are in degrees.
2. Dimension and tolerance formats conform to ASME Y14.4M-1994.
3. The terminal #1 identifier and terminal numbering conform to JESD 95-1 SPP-012.
4. Trace code up to 4 characters to be assigned by sub-contractor.
5. Contact plating: Matte Sn
6. Either package dimensions outline A or B may be supplied.
7. This package outline is shipped as MSL3.

PCB Mounting Pattern

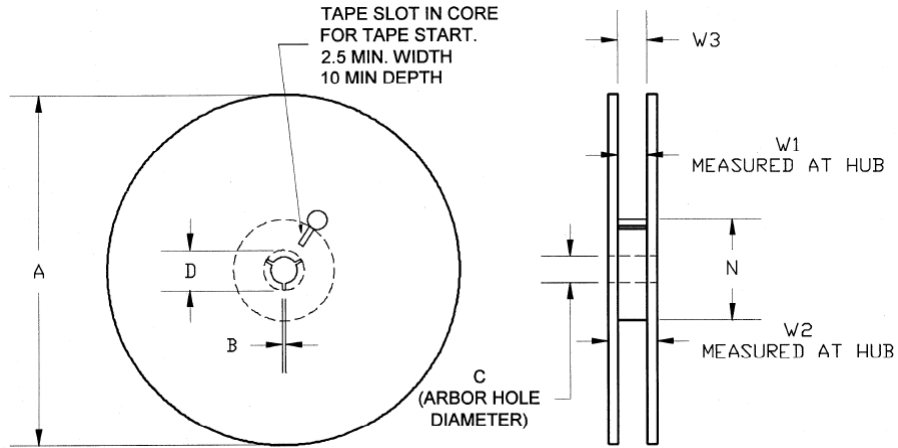


Notes:

1. All dimensions are in millimeters [inches]. Angles are in degrees.
2. Use 1 oz. copper minimum for top and bottom layer metal.
3. Via holes are required under the backside paddle of this device for proper RF & DC grounding and thermal conductivity.
4. Do not remove or minimize via hole structure in the PCB. Thermal and RF grounding is critical.
5. We recommend a 0.35mm (#80/.0135") diameter bit for drilling via holes and a final plated thru diameter of 0.25mm (0.01").
6. Ensure good package backside paddle solder attach for reliable operation and best electrical performance.

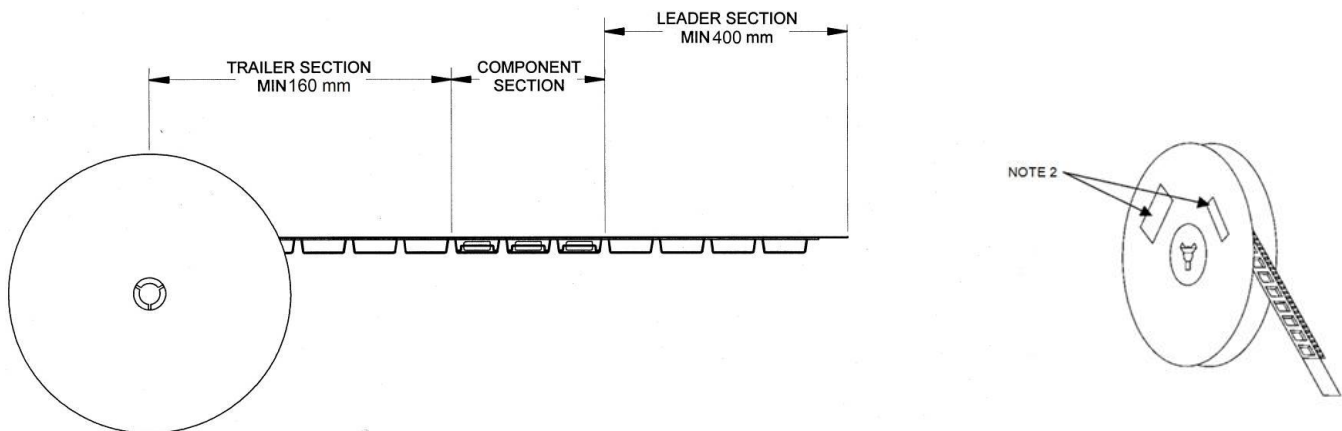
Tape and Reel Information – Reel Dimensions

Standard T/R size = 1,000 pieces on a 7" reel.



| Feature | Measure | Symbol | Size (in) | Size (mm) |
|---------|----------------------|--------|-----------|-----------|
| Flange | Diameter | A | 6.969 | 177.0 |
| | Thickness | W2 | 0.717 | 18.2 |
| | Space Between Flange | W1 | 0.504 | 12.8 |
| Hub | Outer Diameter | N | 2.283 | 58.0 |
| | Arbor Hole Diameter | C | 0.512 | 13.0 |
| | Key Slit Width | B | 0.079 | 2.0 |
| | Key Slit Diameter | D | 0.787 | 20.0 |

Tape and Reel Information – Tape Length and Label Placement



Notes:

1. Empty part cavities at the trailing and leading ends are sealed with cover tape. See EIA 481-1-A.
2. Labels are placed on the flange opposite the sprockets in the carrier tape.

Handling Precautions

| Parameter | Rating | Standard |
|----------------------------------|-----------------------------------|------------------------------|
| ESD – Human Body Model (HBM) | Class 1C | ESDA / JEDEC JESDC22-A114 |
| MSL – Moisture Sensitivity Level | See Package Dimensions Outline | IPC/JEDEC J-STD-020 |



Caution!
ESD-Sensitive Device

Solderability

Compatible with the latest version of J-STD-020, lead-free (260°C max. reflow temp.) soldering processes. Solder profiles available upon request.

RoHS Compliance

This part is compliant with 2011/65/EU RoHS directive (Restrictions on the Use of Certain Hazardous Substances in Electrical and Electronic Equipment) as amended by Directive 2015/863/EU.

This product also has the following attributes:

- Lead Free
- Halogen Free (Chlorine, Bromine)
- Antimony Free
- TBBP-A (C₁₅H₁₂Br₄O₂) Free
- PFOS Free
- SVHC Free

Contact Information

For the latest specifications, additional product information, worldwide sales and distribution locations:

Web: www.qorvo.com

Tel: 1-844-890-8163

Email: customer.support@qorvo.com

Important Notice

The information contained herein is believed to be reliable; however, Qorvo makes no warranties regarding the information contained herein and assumes no responsibility or liability whatsoever for the use of the information contained herein. All information contained herein is subject to change without notice. Customers should obtain and verify the latest relevant information before placing orders for Qorvo products. The information contained herein or any use of such information does not grant, explicitly or implicitly, to any party any patent rights, licenses, or any other intellectual property rights, whether with regard to such information itself or anything described by such information. **THIS INFORMATION DOES NOT CONSTITUTE A WARRANTY WITH RESPECT TO THE PRODUCTS DESCRIBED HEREIN, AND QORVO HEREBY DISCLAIMS ANY AND ALL WARRANTIES WITH RESPECT TO SUCH PRODUCTS WHETHER EXPRESS OR IMPLIED BY LAW, COURSE OF DEALING, COURSE OF PERFORMANCE, USAGE OF TRADE OR OTHERWISE, INCLUDING THE IMPLIED WARRANTIES OF MERCHANTABILITY AND FITNESS FOR A PARTICULAR PURPOSE.**

Without limiting the generality of the foregoing, Qorvo products are not warranted or authorized for use as critical components in medical, life-saving, or life-sustaining applications, or other applications where a failure would reasonably be expected to cause severe personal injury or death.

Copyright 2024 © Qorvo, Inc. | Qorvo is a registered trademark of Qorvo, Inc.

Looking for pricing, stock, or lifecycle information?

Click below to explore more details on WIN SOURCE:

 [View SBB1089Z on WIN SOURCE](#)

 [Qorvo US Inc. Information](#)

Optimize Your Supply Chain with WIN SOURCE Solutions

-  Global Sourcing Solution
-  Obsolete Management
-  Cost Control Management
-  Shortage Management
-  Alternative Solution
-  Excess Inventory Management