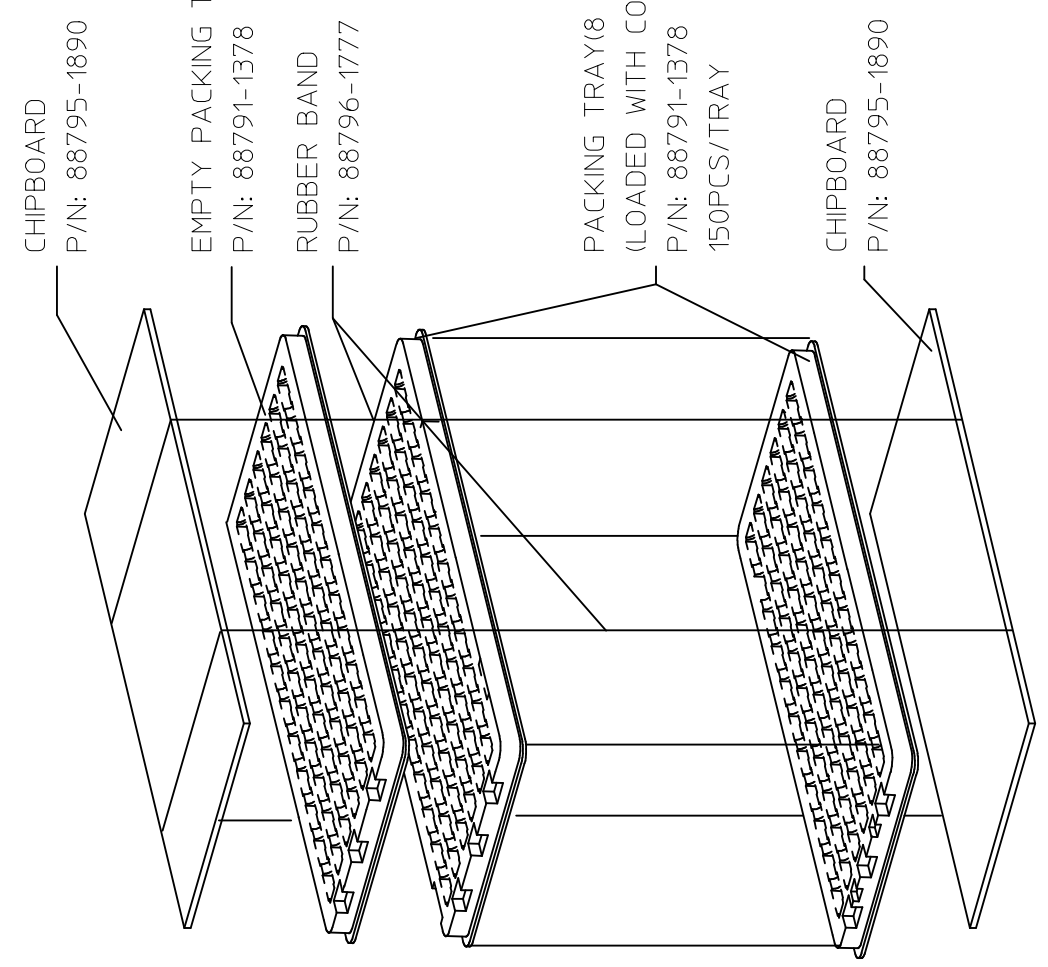


PER TRAY QUANTITY: 19x7+17=150PCS

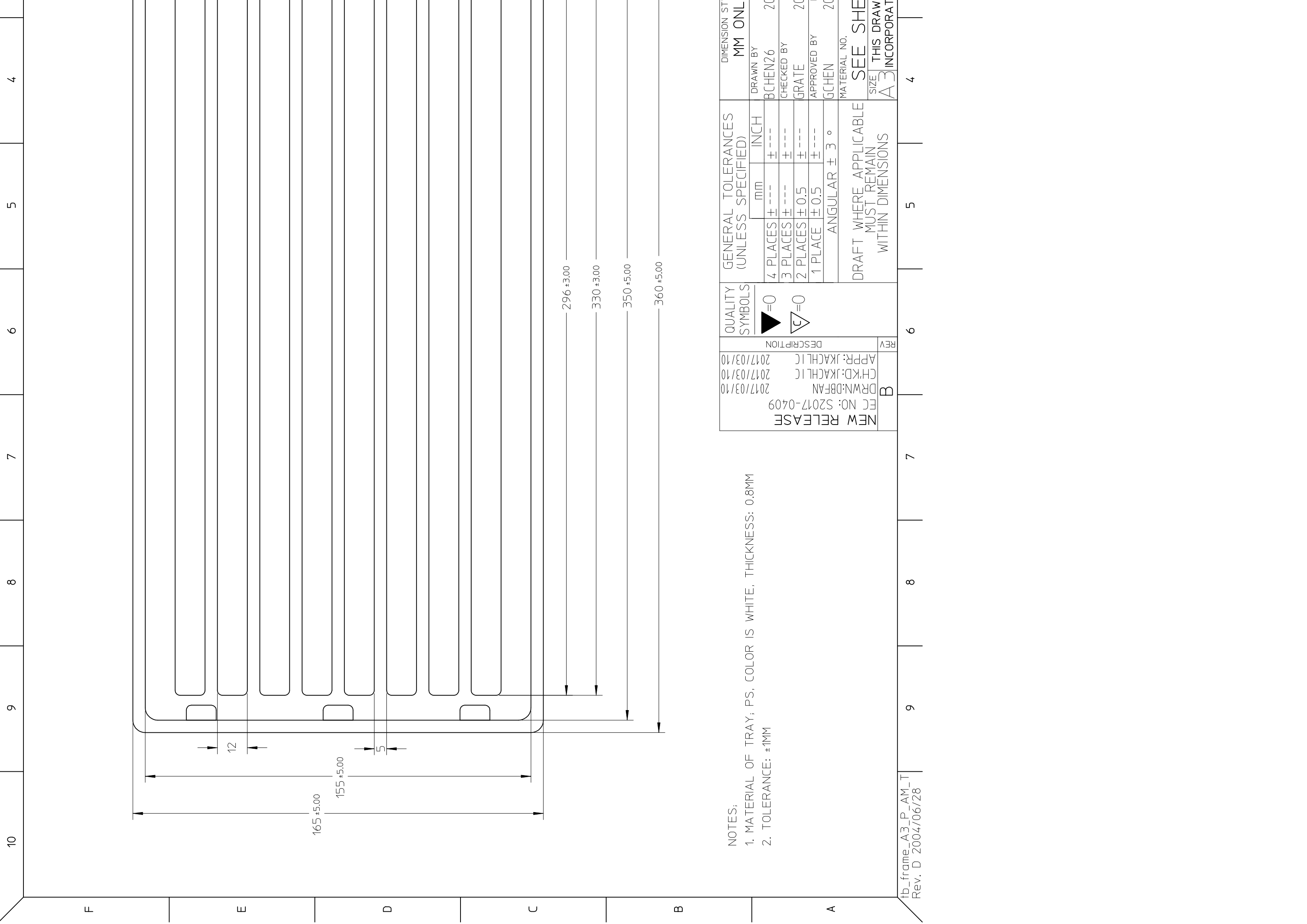


PRODUCT P/N	QUANTITY PER TRAY	QUANTITY PER BOX
67800-10**	67800-30**	150 PCS
67800-31**	67800-40**	
67800-41**	67800-50**	
67800-70**	67800-71**	
67800-80**	67800-81**	

QUALITY SYMBOLS	GENERAL TOLERANCES (UNLESS SPECIFIED)	DIMENSION SYMBOL
	mm	MM ONL
	INCH	
	4 PLACES ±----	DRAWN BY
	3 PLACES ±----	BCHEN26
	2 PLACES ±0.5	CHECKED BY
	1 PLACE ±0.5	GRATE
	ANGULAR ± 3 °	APPROVED BY
		GCHEN
		MATERIAL NO.
		SEE TAE

DRAFT WHERE APPLICABLE MUST REMAIN WITHIN DIMENSIONS

REV	DESCRIPTION
B	NEW RELEASE EC NO: S2017-0409 DRWN:DBFAN 2017/03/10 CHKD:JKACHLIC 2017/03/10 APPR:JKACHLIC 2017/03/10



NOTES:
 1. MATERIAL OF TRAY; PS, COLOR IS WHITE, THICKNESS: 0.8MM
 2. TOLERANCE: ±1MM

NEW RELEASE	EC NO: S2017-0409	DRWN:DBFAN 2017/03/10	CHKD:JKACHLIC 2017/03/10	APPR:JKACHLIC 2017/03/10	REV	DESCRIPTION
-------------	-------------------	--------------------------	-----------------------------	-----------------------------	-----	-------------

QUALITY SYMBOLS	GENERAL TOLERANCES (UNLESS SPECIFIED)	DIMENSION ST
	mm	MM ONL
	INCH	
	4 PLACES ± ---	DRAWN BY
	3 PLACES ± ---	BCHEN26
	2 PLACES ± 0.5	CHECKED BY
	1 PLACE ± 0.5	GRATE
	ANGULAR ± 3 °	APPROVED BY
		GCHEN
		MATERIAL NO.
		SEE SHE
		SIZE THIS DRAW
		A3 INCORPORAT

fb_frame_A3_P_AM_T
 Rev. D 2004/06/28





Looking for pricing, stock, or lifecycle information?

Click below to explore more details on WIN SOURCE:

 [View 67800-5005 on WIN SOURCE](#)

 [Molex, LLC Information](#)

Optimize Your Supply Chain with WIN SOURCE Solutions

-  Global Sourcing Solution
-  Obsolete Management
-  Cost Control Management
-  Shortage Management
-  Alternative Solution
-  Excess Inventory Management