



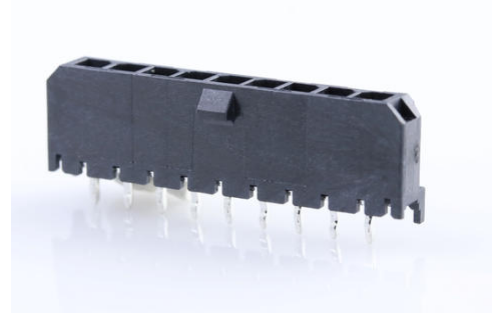
**Part Number :** [436500915](#)

**Product Description :** Micro-Fit 3.0 Vertical Header, 3.00mm Pitch, Single Row, 9 Circuits, with PCB Polarizing Peg, Tin, Glow-Wire Capable, Black

**Series Number :** 43650

**Status :** Active

**Product Category :** PCB Headers and Receptacles



---

## Documents & Resources

### Drawings

[436500915 sd.pdf](#)

[PK-70873-0811-001.pdf](#)

### 3D Models and Design Files

[STEP AP242](#)

[SOLIDWORKS](#)

[Creo](#)

[Symbol and Footprint \(Multi-Format\)](#)

[SYM-43650-0915-001.zip](#)

### Specifications

[436500001-PS-JA-000.pdf](#)

[436500001-PS-KO-000.pdf](#)

[436500001-PS-SP-000.pdf](#)

[PS-43650-001.pdf](#)

[430450004-TS-000.pdf](#)

[430450007-TS-000.pdf](#)

[TS-43045-001-001.pdf](#)

[TS-43045-002-001.pdf](#)

[TS-46235-001-001.pdf](#)

---

## Product Environment Compliance

### Compliance

GADSL/IMDS	Not Relevant
------------	--------------

China RoHS	per SJ/T 11365-2006
EU ELV	Not Relevant
Low-Halogen Status	Low-Halogen per IEC 61249-2-21
REACH SVHC	Not Contained per D(2025)4165-DC (25 June 2025)
EU RoHS	Compliant per EU 2015/863

### Compliance Statements

- EU RoHS
- REACH SVHC
- Low-Halogen

### Industry Documents

- IPC 1752A Class C
- IPC 1752A Class D
- Molex Product Compliance Declaration
- IEC-62474
- chemSHERPA (xml)

### Substances of Interest

- PFAS

### EU RoHS Certificate of Compliance

### Additional Product Compliance Information

## Part Details

### General

Status	Active
Category	PCB Headers and Receptacles
Series	43650
Description	Micro-Fit 3.0 Vertical Header, 3.00mm Pitch, Single Row, 9 Circuits, with PCB Polarizing Peg, Tin, Glow-Wire Capable, Black
Application	Power, Wire-to-Board
Comments	High Temperature, Square Pin, Offset Through Hole Mounting, Solder Type; This Molex product is manufactured from material that has the following ratings, tested by independent agencies: a) A Glow Wire Ignition Temperature (GWIT)

	of at least 775 deg C per IEC 60695-2-13. b) A Glow Wire Flammability Index (GWFI) above 850 deg C per IEC 60695-2-12 and hence complies with the requirements set out in the International Standard IEC 60335-1 5th edition - household and similar electrical appliances - safety, section 30 Resistance to heat and fire. The customers using this product must determine its suitability for use in their particular application through testing or other acceptable means as described in end-product glow-wire flammability test standard IEC 60695-2-11 and any applicable product end-use standard(s). If it is determined during the customer's evaluation of suitability, that higher performance is required, please contact Molex for possible product options.
Component Type	PCB Header
Product Name	Micro-Fit 3.0
UPC	800754016315

### Agency

CSA	LR19980
UL	E29179

### Electrical

Current - Maximum per Contact	8.5A
Voltage - Maximum	600V

### Physical

Breakaway	No
Circuits (Loaded)	9
Circuits (maximum)	9
Color - Resin	Black

Durability (mating cycles max)	30
First Mate / Last Break	No
Glow-Wire Capable	Yes
Mated Height	17.27mm
Material - Metal	Brass
Material - Plating Mating	Tin
Material - Plating Termination	Tin
Material - Resin	High Temperature Thermoplastic
Net Weight	1.447/g
Number of Rows	1
Orientation	Vertical
Packaging Type	Tray
PCB Locator	Yes
PCB Retention	Yes
PCB Thickness - Recommended	1.60mm
Pitch - Mating Interface	3.00mm
Plating min - Mating	2.540µm
Plating min - Termination	2.540µm
Polarized to PCB	Yes
Shrouded	Fully
Stackable	No
Temperature Range - Operating	-40° to +105°C
Termination Interface Style	Through Hole - Kinked Pin

### Solder Process Data

Max-Duration	30
Lead-Free Process Capability	SMC&WAVE
Max-Cycle	3
Max-Temp	260

---

### Mates With / Use With

#### Mates with Part(s)

Description	Part Number
Micro-Fit 3.0 Single Row Receptacle	<u>43645</u>

Housings	
Micro-Fit TPA Single Row Receptacle Housings	<u>171850</u>

---

This document was generated on Nov 19, 2025

## Looking for pricing, stock, or lifecycle information?

Click below to explore more details on WIN SOURCE:

 [View 43650-0915 on WIN SOURCE](#)

 [Molex, LLC Information](#)

## Optimize Your Supply Chain with WIN SOURCE Solutions

-  Global Sourcing Solution
-  Obsolete Management
-  Cost Control Management
-  Shortage Management
-  Alternative Solution
-  Excess Inventory Management