

"High Frequency Ceramic Solutions"

7GHz Mini UWB Antenna, AEC-Q200 Qualified

P/N 7000AT18A1600E-AEC

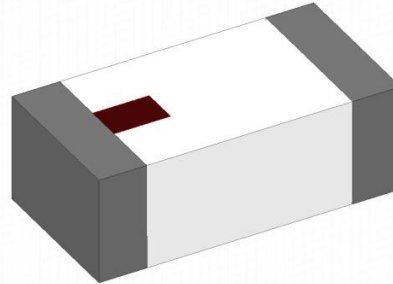
Detail Specification: 3/16/2018

Page 1 of 5

Let us help you with the antenna design, optimization, and tuning!

General Specifications

Part Number	7000AT18A1600E-AEC		
Frequency (GHz)	6.2 - 7.8		
Avg. Rad Efficiency	84%		
Peak Gain (dBi)	3.8		
Average Gain (dBi)	-1.3		
Return Loss (dB)	10 min.	Storage Period	18 months max.
		Storage Temperature	-40 to +105°C
Impedance	50 Ω	Operating Temperature	-40 to +105°C
Input Power	2 Watts max. (CW)	Reel Quantity	3,000

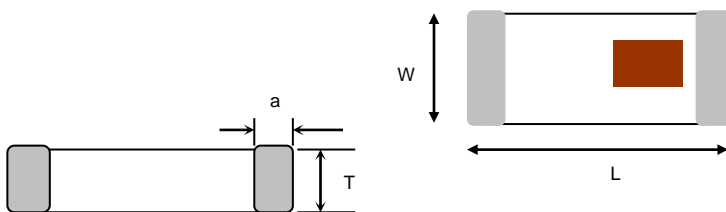


Part Number Explanation

P/N Suffix	Packing Style	Bulk (loose)	Suffix = S	e.g. 7000AT18A1600S-AEC
		T & R	Suffix = E	e.g. 7000AT18A1600E-AEC
		100% Tin	Suffix = E or S	e.g. 7000AT18A1600(E or S)-AEC
	Evaluation Board	7000AT18A1600-EB1SMA (see page 2&3 for details)		

Mechanical Dimensions

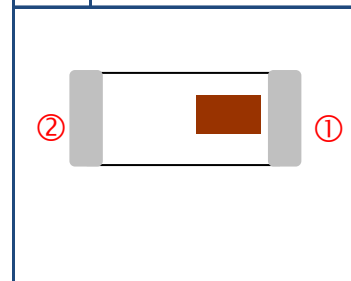
	In	mm
L	0.126 ± 0.008	3.20 ± 0.2
W	0.063 ± 0.008	1.60 ± 0.2
T	0.051 + 0.004 / -0.008	1.30 +0.1 / -0.2
a	0.020 ± 0.012	0.50 ± 0.3



Want the layout file? Request it at: www.johansontechnology.com/ask-a-question

Terminal Configuration

No.	Function
1	FEED
2	NC



Johanson Technology, Inc. reserves the right to make design changes without notice.
All sales are subject to Johanson Technology, Inc. terms and conditions.



Ver. 1.1

www.johansontechnology.com

4001 Calle Tecate • Camarillo, CA 93012 • TEL 805.389.1166 FAX 805.389.1821

2018 Johanson Technology, Inc. All Rights Reserved

"High Frequency Ceramic Solutions"

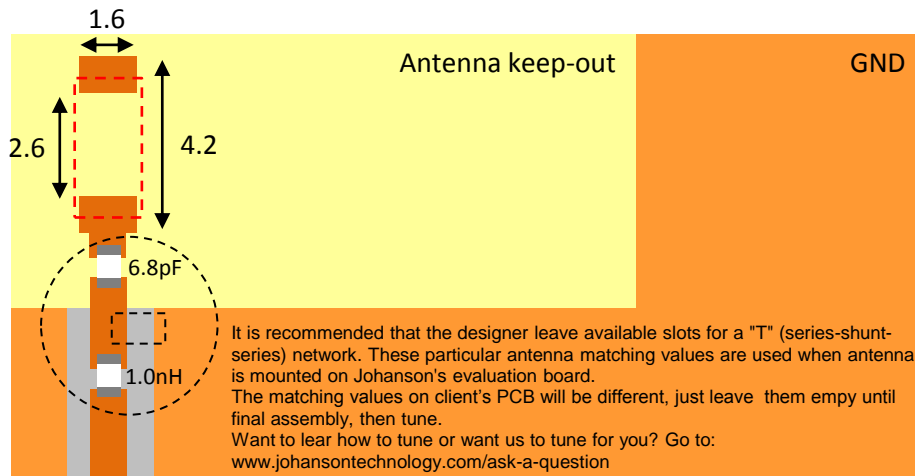
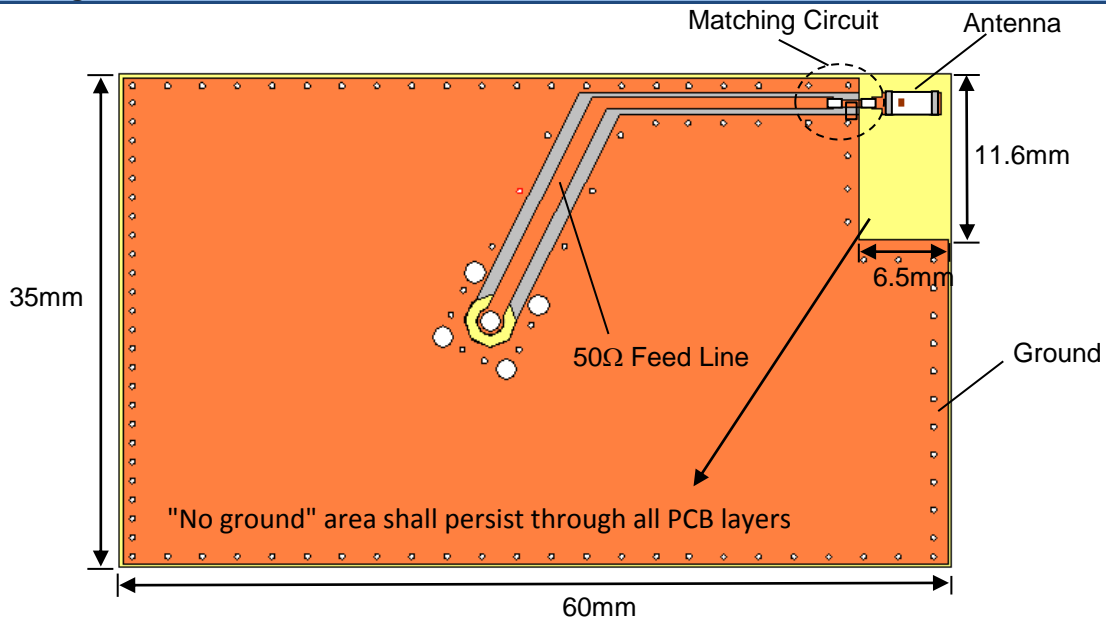
7GHz Mini UWB Antenna, AEC-Q200 Qualified

P/N 7000AT18A1600E-AEC

Detail Specification: 3/16/2018

Page 2 of 5

Mounting Considerations 1: Evaluation Board



To order a pre-tuned 50Ω EVB with a female SMA connector click here:

www.johansontechnology.com/request-a-sample

Reference p/n: 7000AT18A1600-EB1SMA

Johanson Technology, Inc. reserves the right to make design changes without notice.
All sales are subject to Johanson Technology, Inc. terms and conditions.



www.johansontechnology.com

4001 Calle Tecate • Camarillo, CA 93012 • TEL 805.389.1166 FAX 805.389.1821

Ver. 1.1

2018 Johanson Technology, Inc. All Rights Reserved

"High Frequency Ceramic Solutions"

7GHz Mini UWB Antenna, AEC-Q200 Qualified

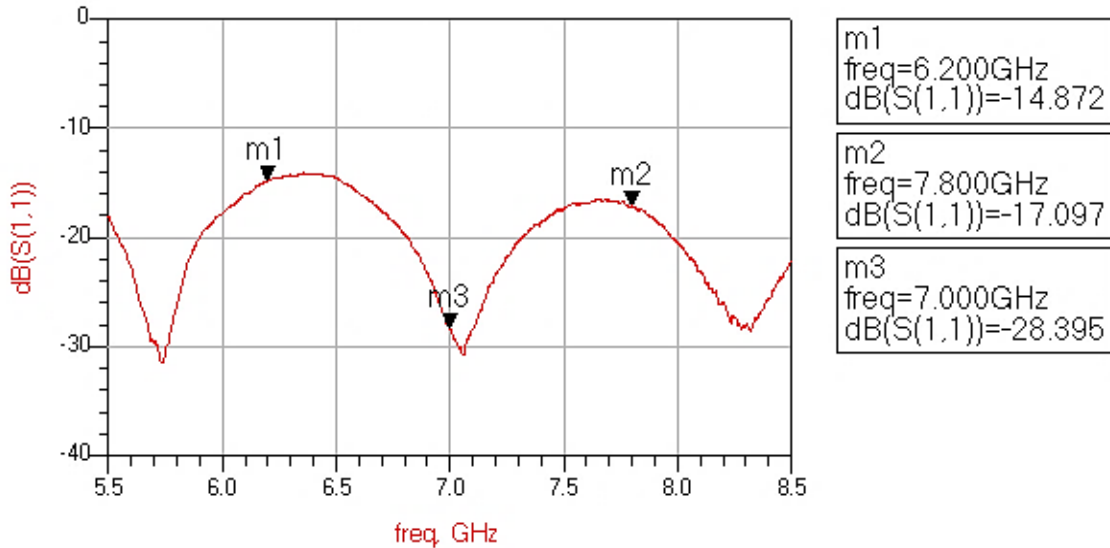
P/N 7000AT18A1600E-AEC

Detail Specification: 3/16/2018

Page 3 of 5

Mounting Considerations 1: Electrical Performance @25°C

Measured Return Loss



Would you like the antenna layout? Have antenna tuning issues?
Please contact us if you have any questions regarding the implementation of this antenna in your PCB's layout. We'll be happy to guide you to maximize the antenna's performance.

Contact our applications engineers at:

www.johansontechnology.com/ask-a-question

Johanson Technology, Inc. reserves the right to make design changes without notice.

All sales are subject to Johanson Technology, Inc. terms and conditions.



Ver. 1.1

www.johansontechnology.com

4001 Calle Tecate • Camarillo, CA 93012 • TEL 805.389.1166 FAX 805.389.1821

2018 Johanson Technology, Inc. All Rights Reserved

"High Frequency Ceramic Solutions"

7GHz Mini UWB Antenna, AEC-Q200 Qualified

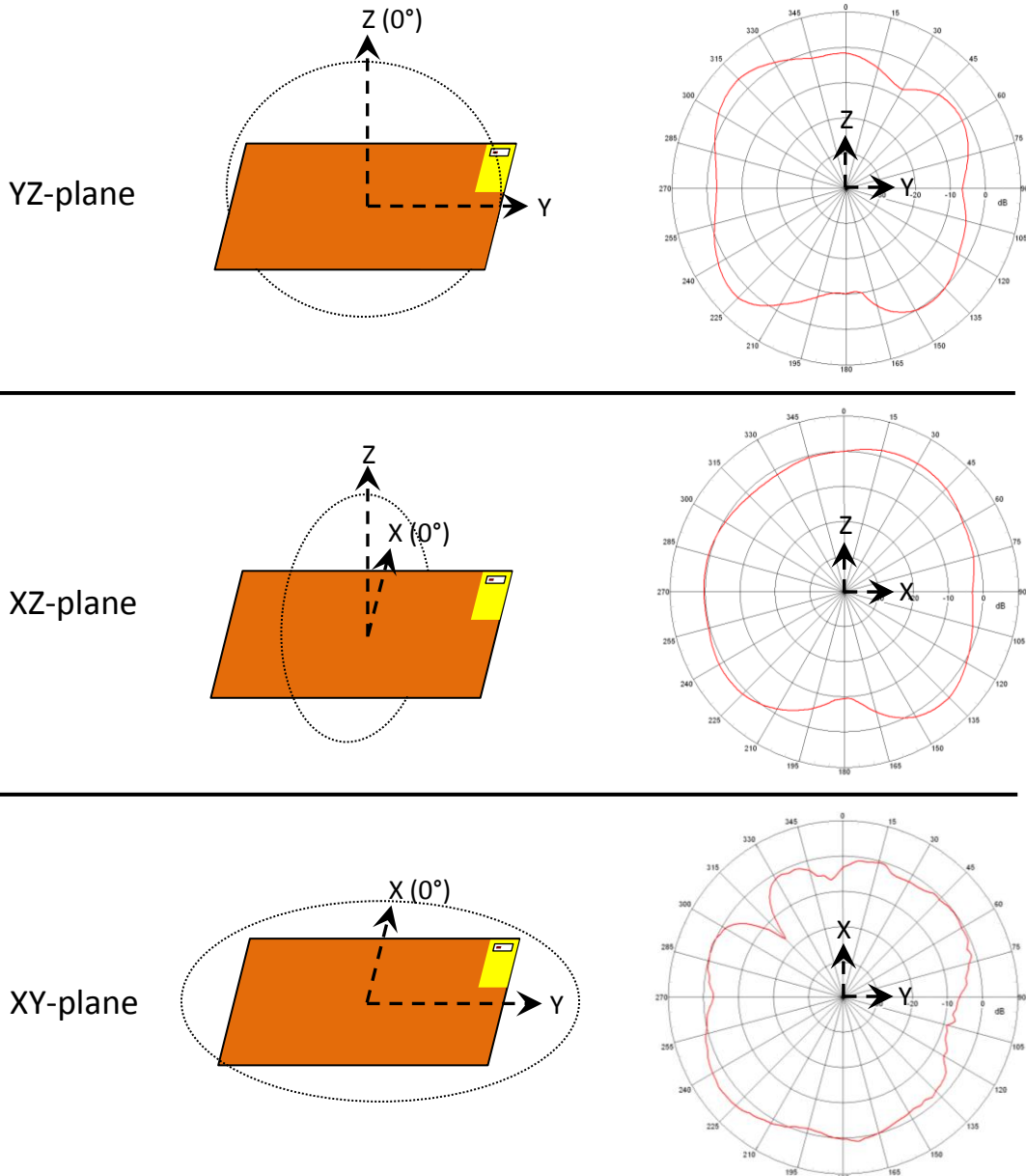
P/N 7000AT18A1600E-AEC

Detail Specification: 3/16/2018

Page 4 of 5

Mounting Considerations 1: Antenna Performance

Typical 2D radiation patterns @ 7.0GHz



Johanson Technology, Inc. reserves the right to make design changes without notice.
All sales are subject to Johanson Technology, Inc. terms and conditions.



Ver. 1.1

www.johansontechnology.com

4001 Calle Tecate • Camarillo, CA 93012 • TEL 805.389.1166 FAX 805.389.1821

2018 Johanson Technology, Inc. All Rights Reserved

"High Frequency Ceramic Solutions"

7GHz Mini UWB Antenna, AEC-Q200 Qualified

P/N 7000AT18A1600E-AEC

Detail Specification: 3/16/2018

Page 5 of 5

Antenna tuning, optimization, and validation services:

www.johansontechnology.com/ipc-antenna-services

For more antennas and to download measured S-parameters, go to:

www.johansontechnology.com/antennas

Soldering Information

www.johansontechnology.com/ipcsoldering-profile

MSL Info

www.johansontechnology.com/msl-rating

Packaging information

www.johansontechnology.com/tape-reel-packaging

For layout review contact our Applications Team at:

www.johansontechnology.com/ask-a-question

RoHS Compliance

www.johansontechnology.com/rohs-compliance

Need help designing the antenna in? Use our antenna design services!

www.johansontechnology.com/ipc-antenna-services

We provide 2 free layout reviews and if you need us to tune and characterize the antenna on your product (inside anechoic chamber) we can do that too. Small lab fee may apply for the latter.

Johanson Technology, Inc. reserves the right to make design changes without notice.

All sales are subject to Johanson Technology, Inc. terms and conditions.



Looking for pricing, stock, or lifecycle information?

Click below to explore more details on WIN SOURCE:

 [View 7000AT18A1600E-AEC on WIN SOURCE](#)

 [Johanson Technology Inc. Information](#)

Optimize Your Supply Chain with WIN SOURCE Solutions

-  Global Sourcing Solution
-  Obsolete Management
-  Cost Control Management
-  Shortage Management
-  Alternative Solution
-  Excess Inventory Management