



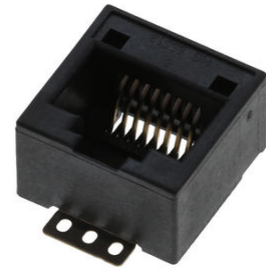
Part Number : [855135113](#)

Product Description : Modular Jack, Vertical, Top Entry, Surface Mount, 8/8, Low Profile, Pick-and-Place Polyimide Tape, 13" Reel

Series Number : 85513

Status : Active

Product Category : Modular Jacks and Plugs



Documents & Resources

Drawings

[855135113_sd.pdf](#)

3D Models and Design Files

[STEP AP242](#)

[SOLIDWORKS](#)

[Creo](#)


Specifications

[AS-85513-001-001.pdf](#)

[PS-85513-002-001.pdf](#)

Product Environment Compliance

Compliance

GADSL/IMDS	Not Relevant
China RoHS	 per SJ/T 11365-2006
EU ELV	Not Relevant
Low-Halogen Status	Low-Halogen per IEC 61249-2-21
REACH SVHC	Not Contained per D(2025)4165-DC (25 June 2025)
EU RoHS	Compliant per EU 2015/863

[Compliance Statements](#)

- EU RoHS
- REACH SVHC

- Low-Halogen

Industry Documents

- IPC 1752A Class C
- IPC 1752A Class D
- Molex Product Compliance Declaration
- IEC-62474
- chemSHERPA (xml)

Substances of Interest

- PFAS

EU RoHS Certificate of Compliance

Additional Product Compliance Information

Part Details

General

Status	Active
Category	Modular Jacks and Plugs
Series	85513
Description	Modular Jack, Vertical, Top Entry, Surface Mount, 8/8, Low Profile, Pick-and-Place Polyimide Tape, 13" Reel
Comments	Reflow Capable, Small Panel Cutout
Component Type	PCB Jack
Magnetic	No
Performance Category	3
Power over Ethernet (PoE)	N/A
Product Name	Modular Jack 8/8,RJ45
UPC	887191677644

Electrical

Current - Maximum per Contact	1.5A
Shielded	No
Voltage - Maximum	125V DC

Physical

Boot Color	N/A
Color - Resin	Black

Durability (mating cycles max)	2500
Inverted / Top Latch	No
Jack Height	12.70mm
Lightpipes/LEDs	None
Material - Metal	Copper Alloy
Material - Plating Mating	Gold over Palladium Nickel
Material - Plating Termination	Tin
Material - Resin	High Temperature Thermoplastic
Net Weight	2.600/g
Orientation	Vertical (Top Entry)
Packaging Type	Embossed Tape on Reel
PCB Locator	No
PCB Retention	Yes
Pitch - Mating Interface	1.02mm
Pitch - Termination Interface	1.27mm
Plating min - Mating	0.051µm, 1.016µm
Plating min - Termination	1.905µm
Port Configuration	1x1
Positions / Loaded Contacts	8/8
Temperature Range - Operating	-40° to +85°C
Termination Interface Style	Surface Mount
Waterproof / Dustproof	No
Wire/Cable Type	N/A





Looking for pricing, stock, or lifecycle information?

Click below to explore more details on WIN SOURCE:

 [View 85513-5113 on WIN SOURCE](#)

 [Molex, LLC Information](#)

Optimize Your Supply Chain with WIN SOURCE Solutions

-  Global Sourcing Solution
-  Obsolete Management
-  Cost Control Management
-  Shortage Management
-  Alternative Solution
-  Excess Inventory Management