



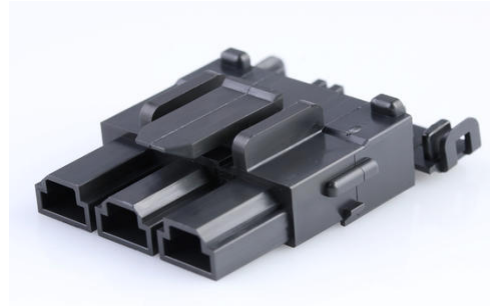
Part Number : [428160312](#)

Product Description : 10.00mm Pitch Mini-Fit Sr. Receptacle Housing, Single Row, 3 Circuit, Black

Series Number : 42816

Status : Active

Product Category : Connector Housings



Documents & Resources

Drawings

[428160312_sd.pdf](#)

3D Models and Design Files

[STEP AP242](#)

[SOLIDWORKS](#)

[Creo](#)

Specifications

[PK-42816-002-001.pdf](#)


[PS-42815-001-001.pdf](#)

[TS-42815-001-001.pdf](#)

[TS-42815-004-001.pdf](#)

Product Environment Compliance

Compliance

GADSL/IMDS	Not Relevant
China RoHS	 per SJ/T 11365-2006
EU ELV	Not Relevant
Low-Halogen Status	Not Low-Halogen per IEC 61249-2-21
REACH SVHC	Not Contained per D(2025)4165-DC (25 June 2025)
EU RoHS	Compliant per EU 2015/863

[Compliance Statements](#)

- EU RoHS
- REACH SVHC
- Low-Halogen

Industry Documents

- IPC 1752A Class C
- IPC 1752A Class D
- Molex Product Compliance Declaration
- IEC-62474
- chemSHERPA (xml)

Substances of Interest

- PFAS

EU RoHS Certificate of Compliance

Additional Product Compliance Information

Part Details

General

Status	Active
Category	Connector Housings
Series	42816
Description	10.00mm Pitch Mini-Fit Sr. Receptacle Housing, Single Row, 3 Circuit, Black
Application	Power, Wire-to-Board, Wire-to-Wire
Product Name	Mini-Fit Sr.
UPC	800754381673

Agency

CSA	LR19980
UL	E29179

Physical

Circuits (maximum)	3
Color - Resin	Black
Flammability	94V-0
Gender	Receptacle
Glow-Wire Capable	No
Lock to Mating Part	Yes

Material - Resin	Polyester
Net Weight	6.431/g
Number of Rows	1
Packaging Type	Bag
Panel Mount	No
Pitch - Mating Interface	10.00mm
Polarized to Mating Part	Yes
Stackable	No
Temperature Range - Operating	-40° to +105°C

Solder Process Data

Lead-Free Process Capability	N/A
------------------------------	-----

Mates With / Use With

Mates with Part(s)



Description	Part Number
10.00mm Pitch Mini-Fit Sr. Single Row Plug Housings	<u>42818</u>
Mini-Fit Sr. Vertical Single Row Headers	<u>42819</u>
Mini-Fit Sr. Right-Angle Single Row Headers	<u>42820</u>

Use with Part(s)

Description	Part Number
Mini-Fit Sr. Female Crimp Terminals	<u>42815</u>
Use With	Terminal Position Assurance (TPA) Clip Included

Looking for pricing, stock, or lifecycle information?

Click below to explore more details on WIN SOURCE:

-  [View 42816-0312 on WIN SOURCE](#)
-  [Molex, LLC Information](#)

Optimize Your Supply Chain with WIN SOURCE Solutions

-  Global Sourcing Solution
-  Obsolete Management
-  Cost Control Management
-  Shortage Management
-  Alternative Solution
-  Excess Inventory Management