



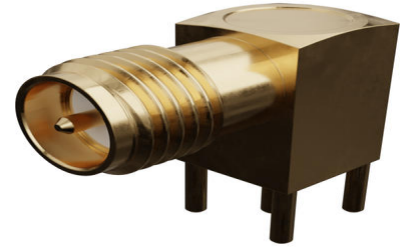
**Part Number :** [733910320](#)

**Product Description :** SMA Jack, Reverse Polarity, Right-Angle, PCB Receptacle, Die Cast Body, Gold (Au) Plated, 50 Ohms

**Series Number :** 73391

**Status :** Active

**Product Category :** RF / Coaxial Connectors



---

## Documents & Resources

### Drawings

[733910320 sd.pdf](#)

### 3D Models and Design Files

[STEP AP242](#)

[SOLIDWORKS](#)

[Creo](#)

---

## Product Environment Compliance

### Compliance

GADSL/IMDS	Compliant with Exemption 3; 34; 33
China RoHS	per SJ/T 11365-2006
EU ELV	Not Relevant
Low-Halogen Status	Low-Halogen per IEC 61249-2-21
REACH SVHC	Contains Lead per D(2025)4165-DC (25 June 2025)
EU RoHS	Compliant with Exemption 6(c) per EU 2015/863

### Compliance Statements

- EU RoHS
- REACH SVHC
- Low-Halogen

### Industry Documents

- IPC 1752A Class C

- IPC 1752A Class D
- Molex Product Compliance Declaration
- IEC-62474
- chemSHERPA (xml)

Substances of Interest

- PFAS

EU RoHS Certificate of Compliance

Additional Product Compliance Information

---

## Part Details

### General

Status	Active
Category	RF / Coaxial Connectors
Series	73391
Description	SMA Jack, Reverse Polarity, Right-Angle, PCB Receptacle, Die Cast Body, Gold (Au) Plated, 50 Ohms
Application	RF
Product Name	SMA
Style	PCB
Type	Subminiature
UPC	800756586489

### Electrical

Frequency	18 GHz
Impedance	50Ω
Power / Voltage	VOLTAGE: 500 Vrms@Sea Level

### Physical

Cable Attachment	N/A
Gender	RP Jack
Keying to Mating Part	N/A
Net Weight	2.862/g
Orientation	Right Angle
Packaging Type	Tray
Panel Mount	No

Panel Mount Method	N/A
PCB Mounting	Through Hole
PCB Thickness - Recommended	3.81mm
Reverse Polar	Yes
Wire/Cable Type	N/A

### Solder Process Data

Max-Duration	5
Lead-Free Process Capability	SMC&WAVE
Max-Cycle	1
Max-Temp	260

## Looking for pricing, stock, or lifecycle information?

Click below to explore more details on WIN SOURCE:

 [View 73391-0320 on WIN SOURCE](#)

 [Molex, LLC Information](#)

## Optimize Your Supply Chain with WIN SOURCE Solutions

-  Global Sourcing Solution
-  Obsolete Management
-  Cost Control Management
-  Shortage Management
-  Alternative Solution
-  Excess Inventory Management