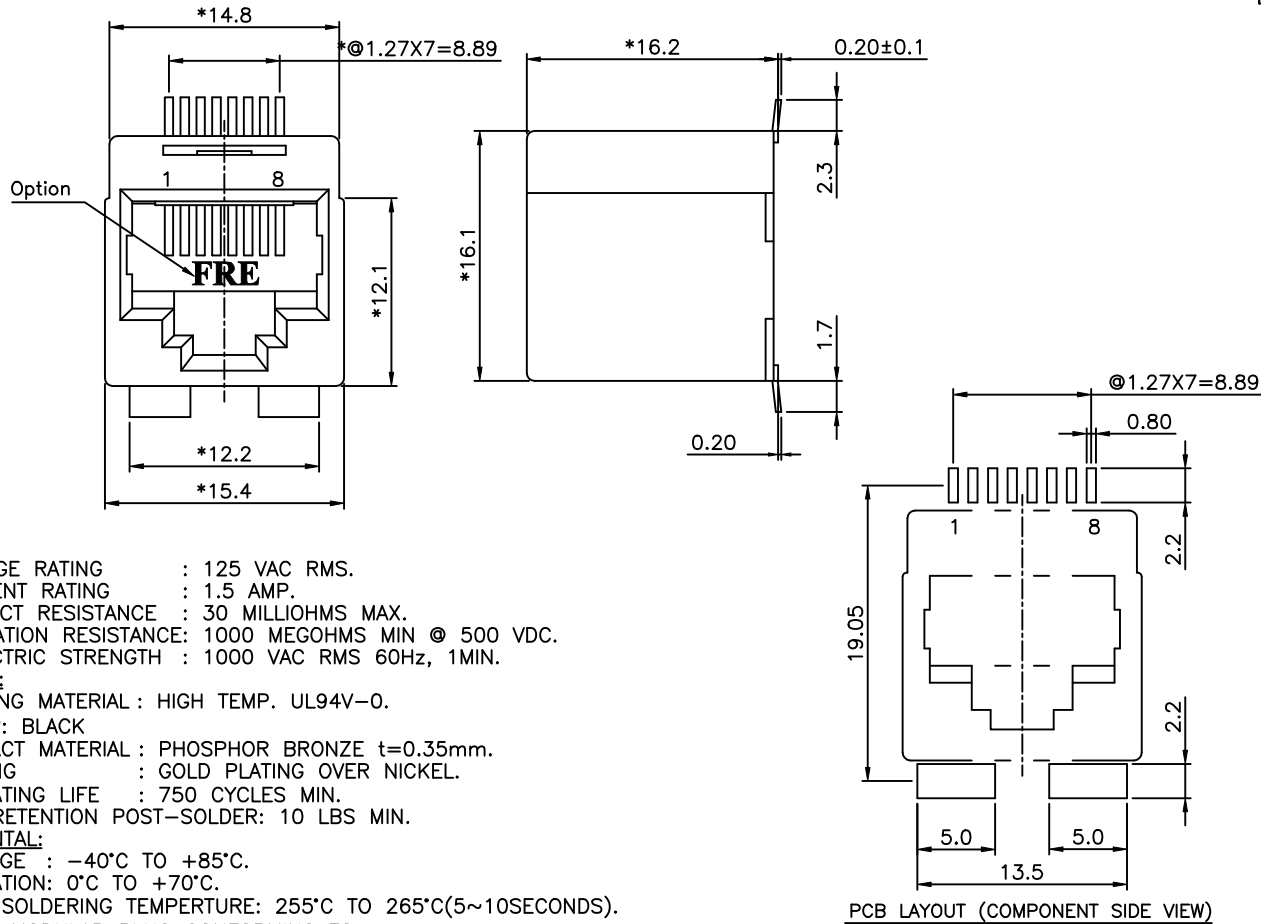




**THE DATASHEET OF
E5288-3007B2-L**



REVISION RECORD				
REV	ECO	DESCRIPTION	DRFT	CHKD
△		ADD NEW P/N	10/28/05 JAMYIN	



NOTES:

ELECTRICAL:

- VOLTAGE RATING : 125 VAC RMS.
- CURRENT RATING : 1.5 AMP.
- CONTACT RESISTANCE : 30 MILLIOHMS MAX.
- INSULATION RESISTANCE: 1000 MEGOHMS MIN @ 500 VDC.
- DIELECTRIC STRENGTH : 1000 VAC RMS 60Hz, 1MIN.

MECHANICAL:

- HOUSING MATERIAL : HIGH TEMP. UL94V-0.
COLOR: BLACK
- CONTACT MATERIAL : PHOSPHOR BRONZE t=0.35mm.
- PLATING : GOLD PLATING OVER NICKEL.
- OPERATING LIFE : 750 CYCLES MIN.
- PCB RETENTION POST-SOLDER: 10 LBS MIN.

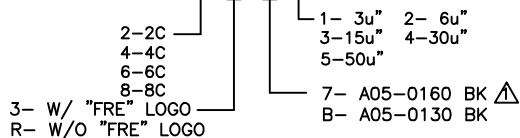
ENVIRONMENTAL:

- STORAGE : -40°C TO +85°C.
- OPERATION: 0°C TO +70°C.
- WAVE SOLDERING TEMPERATURE: 255°C TO 265°C(5~10SECONDS).

MATES WITH MODULAR PLUG CONFORMING TO
FCC PART 68, SUBPART F.

CUL FILE NO. E163191

ROHS PART NUMBER: E528X-X00XBX-L



← MM (INCH) →		DFTO JAMYIN	DATE 10/24/05
TOLERANCES EXCEPT AS NOTED		CHKDANKUE	DATE 2005/10/28
		MFO	DATE
MM	±	APPVLLUSHNEG	DATE 2005/10/28
.0	±0.2		
.00	±0.15		
.000	±0.075		
ANGLES ± 0.01°		QT'Y :	
THIRD ANGLE PROJECTION		FINISH :	
		SCALE : 3:1	

FULL RISE ELECTRONIC CO., LTD			
TITLE TOP ENTRY PCB JACK 8P SMT			
DRAWING NO. GE523007-LA		SIZE	REV
/PART NO. SEE NOTE		A3	1
		10/24/05	
DO NOT SCALE DRAWING		SHEET X	OF Y

Looking for pricing, stock, or lifecycle information?

Click below to explore more details on WIN SOURCE:

 [View E5288-3007B2-L on WIN SOURCE](#)

 [Pulse Information](#)

Optimize Your Supply Chain with WIN SOURCE Solutions

-  Global Sourcing Solution
-  Obsolete Management
-  Cost Control Management
-  Shortage Management
-  Alternative Solution
-  Excess Inventory Management