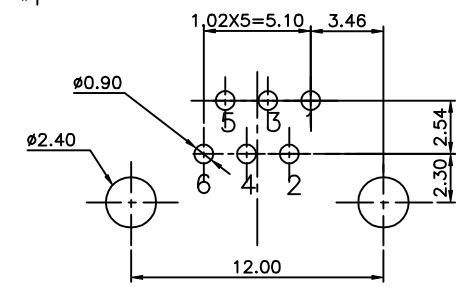
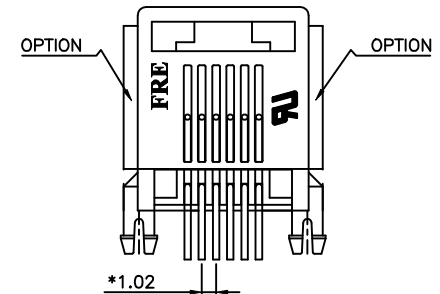
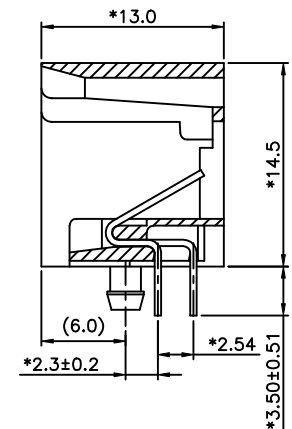
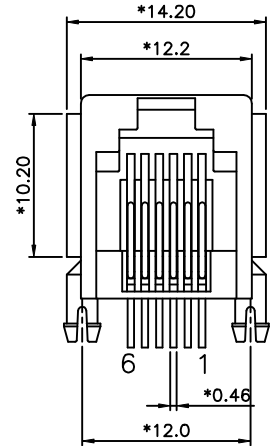
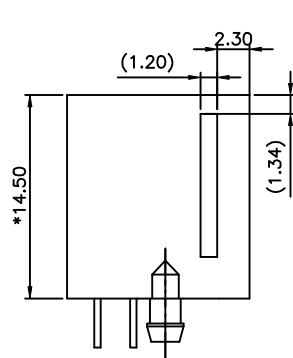




**THE DATASHEET OF
E5562-60LU22-L**



REVISION RECORD				
REV	ECO	DESCRIPTION	DRFT	CHKD
△		AMEND P/N	YICAN 05/07/05	
△		ADD P/N	WZY 04/20/05	
△		MODIFY NOTE	JANBY 4/29/05	



PC Board Layout Component Side Shown

NOTES:

ELECTRICAL:

- VOLTAGE RATING : 125 VAC RMS.
- CURRENT RATING : 1.5 AMP.
- CONTACT RESISTANCE : 30 MILLIOHMS MAX.
- INSULATION RESISTANCE: 1000MEGOHMS MIN @ 500 VDC.
- DIELECTRIC STRENGTH : 1000 VAC RMS 60Hz, 1MIN.

MECHANICAL:

- HOUSING MATERIAL : NYLON+30%.G.F(FR52)UL94V-0.
- HOUSING COLOUR : BLACK.
- INSERT MATERIAL : NYLON+30%.G.F(FR52)UL94V-0.
- CONTACT MATERIAL : PHOSPHOR BRONZE Ø0.46mm.
- PLATING : GOLD PLATING OVER NICKEL.
- OPERATING LIFE : 750 CYCLES MIN.
- PCB RETENTION PRE-SOLDER : 1 LB MIN.
- PCB RETENTION POST-SOLDER: 10 LBS MIN.

ENVIRONMENTAL:

- STORAGE : -40°C TO +85°C.
- OPERATION: 0°C TO 70°C.
- WAVE SOLDERING TEMPERATURE: 255~265°C (5~10 SECONDS)

MATES WITH MODULAR PLUG CONFORMING TO FCC PART 68, SUBPART F.

CUL FILE NO. E163191

ROHS PART NUMBER: E556X-60LXXX-L

NO.OF CONTACT	1- 3u"	2- 6u"
2-2C	3-15u"	4-30u"
4-4C	5-50u"	6-Pd 20u"
6-6C	F-Gold Flash	

- △ UN- W/O POTION&W/O LOGO GY
- △ UM- W/ POTION&W/O LOGO GY
- △ U2- W/O POTION&W/O LOGO BK

MM (INCH)		DFTO LIUXIN	DATE 03/12/05
TOLERANCES EXCEPT AS NOTED		CHKD JAKE	DATE2005/10/06
		MFO	DATE
MM	±	APPLV LUSHENG	DATE2005/10/06
.0 ±0.20	±		
.00 ±0.15	±		
.000 ±0.075	±		
ANGLES ±	QT'Y :		
THIRD ANGLE PROJECTION		FINISH :	
		SCALE : 3:1	

FULL RISE ELECTRONIC CO., LTD			
TITLE MINI L/P PCB JACK 6P			
DRAWING NO. GE553013-LA		SIZE A3	REV 3
/PART NO. SEE NOTE			
DO NOT SCALE DRAWING		SHEET X	OF Y

Looking for pricing, stock, or lifecycle information?

Click below to explore more details on WIN SOURCE:

 [View E5562-60LU22-L on WIN SOURCE](#)

 [Pulse Information](#)

Optimize Your Supply Chain with WIN SOURCE Solutions

-  Global Sourcing Solution
-  Obsolete Management
-  Cost Control Management
-  Shortage Management
-  Alternative Solution
-  Excess Inventory Management