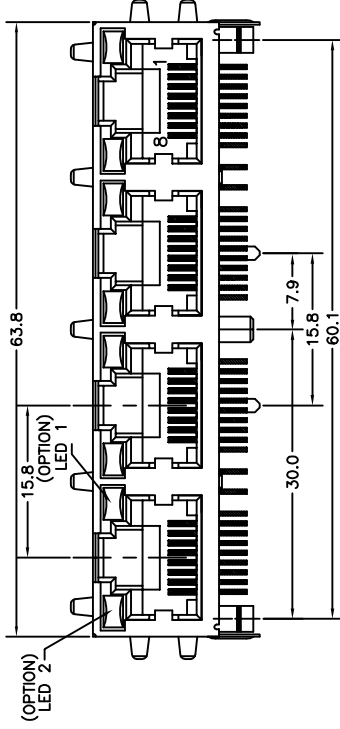




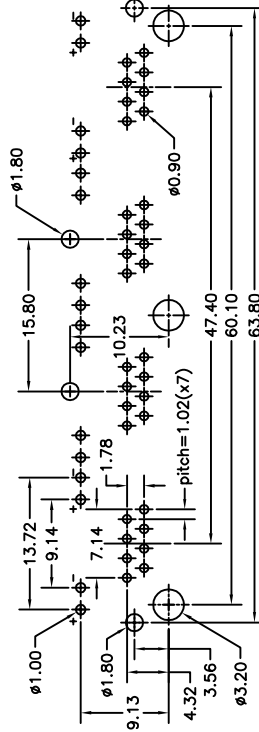
**THE DATASHEET OF
E5J88-14CJD2-L**





1.78±
3.56±
4.32±

13.1



PC Board Layout T=1.6mm.

Component Side Shown. Tolerance±0.05mm

NOTES:

ELECTRICAL:

1. VOLTAGE RATING : 125 VAC RMS.
2. CURRENT RATING : 1.5 AMP.
3. CONTACT RESISTANCE : 30 MILLIOHMS MAX.
4. INSULATION RESISTANCE: 1000 MEGOHMS MIN @ 500 VDC.
5. DIELECTRIC STRENGTH : 1000 VAC RMS 60Hz, 1MIN.
6. LED RATINGS: FORWARD VOLTAGE: 2.2 VOLTS TYPICAL.
REVERSE VOLTAGE: 5 VOLTS MAXIMUM.
7. OPERATING: 750 CYCLES MIN.

MECHANICAL:

1. HOUSING MATERIAL : GLASS FILLED NYLON UL94V-0. COLOR:BLACK
2. INSERT MATERIAL : GLASS FILLED NYLON UL94V-0. COLOR:BLACK
3. BACK PLATE MATERIAL : GLASS FILLED NYLON UL94V-0. COLOR:BLACK
4. LED SIZE : 3.2x2.0x4.0xP=2.54mm.
5. SHIELD MATERIAL : COPPER ALLOY 0.25mm THICKNESS PLATING NI.
6. CONTACT MATERIAL : PHOSPHOR BRONZE t=0.35mm.
CONTACT AREA-SELECTIVE GOLD PLATING.
TAILS-TIN 150u", MIN OVER NICKEL.
8. PCB RETENTION PRE-SOLDER : 1 LB MIN.
9. PCB RETENTION POST-SOLDER: 10 LBS MIN.

ENVIRONMENTAL:

1. STORAGE TEMPERATURE : -40°C TO +85°C.
2. OPERATION TEMPERATURE: -40°C TO +85°C.
3. WAVE SOLDERING TEMPERATURE:255~265°C(5~10 SECONDS)
4. RoHS COMPLIANT.

MATES WITH MODULAR PLUG CONFORMING TO
FCC PART 68, SUBPART F.
CUL FILE NO. E163191

PART NUMBER	LED COLOR	
	L	Y
E5J88-11CJD2-L	GREEN	Y
E5J88-14CJD2-L	GREEN	Y
E5J88-24CJD2-L	GREEN	G
E5J88-31CJD2-L	YELLOW	G

RoHS Compliant

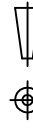
TITLE

RJ45 SIDE

DFTO Cathy

DATE 2006/09/21

SCALE :



THIRD ANGLE PROJECTION

TOLERANCES EXCEPT AS NOTED	
MM	
.0 ± 0.2	±
.00 ± 0.15	±
.000 ± 0.075	±
ANGLES ± 0.5	

REMARKS & LISTS

8 7 6 5 4 3

Looking for pricing, stock, or lifecycle information?

Click below to explore more details on WIN SOURCE:

 [View E5J88-14CJD2-L on WIN SOURCE](#)

 [Pulse Information](#)

Optimize Your Supply Chain with WIN SOURCE Solutions

-  Global Sourcing Solution
-  Obsolete Management
-  Cost Control Management
-  Shortage Management
-  Alternative Solution
-  Excess Inventory Management