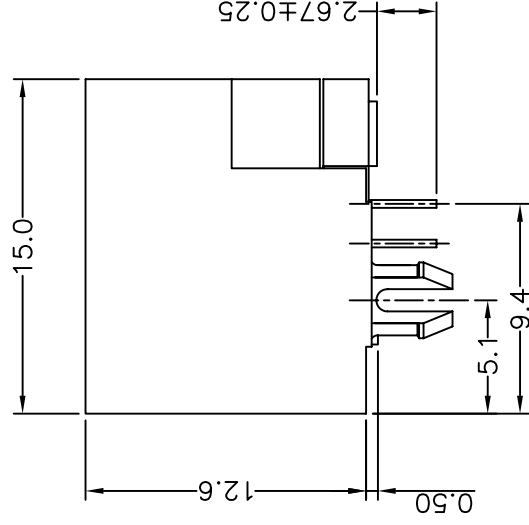
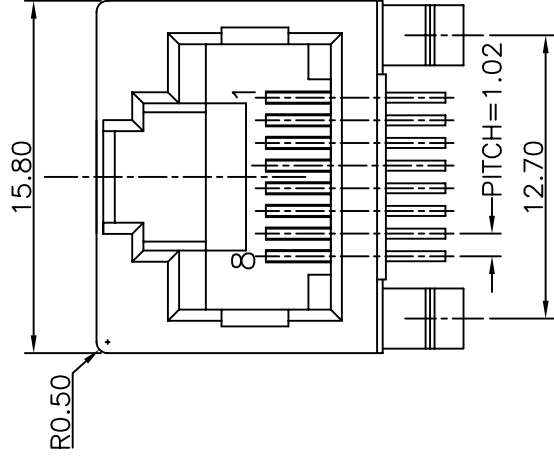




**THE DATASHEET OF  
E5J88-00L0G2-L**





**NOTES:**

ELECTRICAL:

1. VOLTAGE RATING : 125 VAC RMS.
2. CURRENT RATING : 1.5 AMP.
3. CONTACT RESISTANCE : 35 MILLIOHMS MAX.
4. INSULATION RESISTANCE: 1000 MEGOHMS MIN @ 500 VDC.
5. DIELECTRIC STRENGTH : 1000 VDC RMS 60Hz, 1MIN.
6. OPERATING: 750 CYCLES MIN.

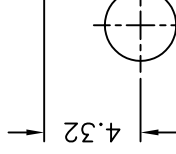
MECHANICAL:

1. HOUSING MATERIAL : GLASS FIBER FILLED NYLON, UL94V-0\BLACK.
2. INSERT MATERIAL : GLASS FIBER FILLED NYLON, UL94V-0\BLACK.
3. CONTACT MATERIAL : PHOSPHOR BRONZE 0.35mm THICKNESS.
4. PLATING : GOLD PLATING OVER NICKEL.
5. PCB RETENTION PRE-SOLDER : 1 LB MIN.
6. PCB RETENTION POST-SOLDER: 10 LBS MIN.

ENVIRONMENTAL:

1. STORAGE : -40°C TO +85°C.
  2. OPERATION: -40°C TO +85°C.
  3. WAVE SOLDERING TEMPERATURE: 255°C±5°C (5 SEC MAX).
- MATES WITH MODULAR PLUG CONFORMING TO FCC PART 68, SUBPART F.

(\*7)PITCH=1.02



PCBCOM-IC

DETACHED LISTS		MM (INCH)	▲	▶
TOLERANCES EXCEPT AS NOTED				
MM			±	±
.0 ± 0.25			±	±
.00 ± 0.20			±	±
.000 ± 0.10			±	±
ANGLES ± 1°				
THIRD ANGLE PROJECTION				

E5J88-00LJG2-L	6U"
PART NO.	Au PLATING

<b>RoHS Compliant</b>	
TITLE	LED
DFTO :	ELLA
DATE :	03/20/2013
SCALE :	4:1

## Looking for pricing, stock, or lifecycle information?

Click below to explore more details on WIN SOURCE:

 [View E5J88-00L0G2-L on WIN SOURCE](#)

 [Pulse Information](#)

## Optimize Your Supply Chain with WIN SOURCE Solutions

-  Global Sourcing Solution
-  Obsolete Management
-  Cost Control Management
-  Shortage Management
-  Alternative Solution
-  Excess Inventory Management