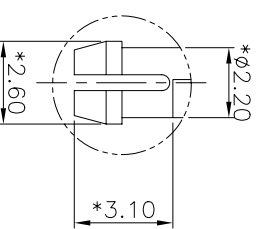
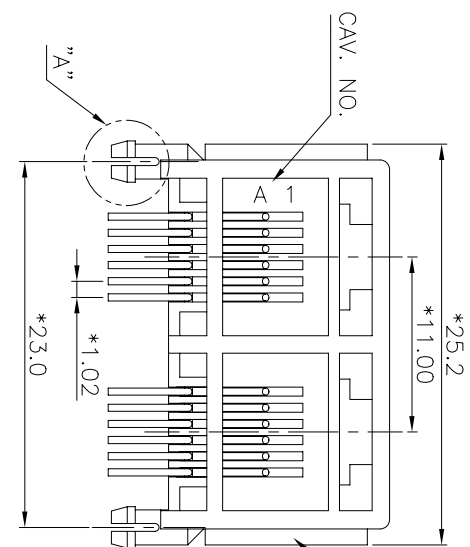
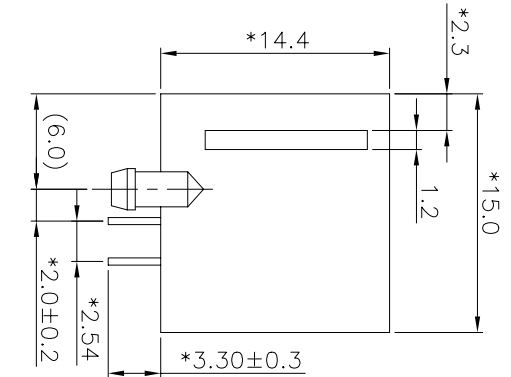




**THE DATASHEET OF
E5562-80AU12-L**



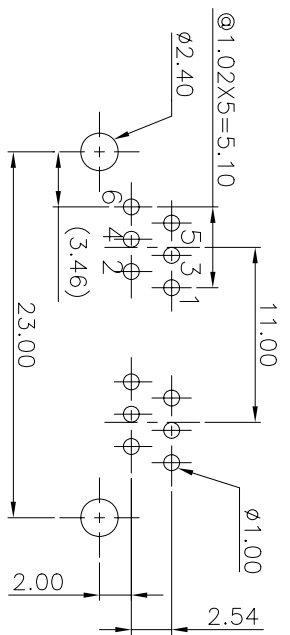
REVISION RECORD			
REV	ECO	DESCRIPTION	DRFT
△		MODIFY PART NUMBER	YAN 11/24/05
△		MODIFY PART NUMBER	HERO 12/29/05



DETAIL "A"

: NYLON+30%.G.F (FR52) UL94V-0
 : PHOSPHOR BRONZE Ø0.46mm.
 : GOLD PLATING OVER NICKEL.
 : 750 CYCLES MIN.
 R: 1 LB MIN.
 ER: 10 LBS MIN.
 C.
 TURE: 255~265° (5~10 SECONDS)
 FORMING TO

30u" 2-6u" 3-15u"
 W/O PANEL STOP W/ "FRE" LOGO BK △
 W/O PANEL STOP W/ "FRE" LOGO BK △
 W/O PANEL STOP W/ "FRE" LOGO BK △
 W/O PANEL STOP W/ "FRE" LOGO GY △



PC Board Layout Component Side Shown

DETACHED LISTS	
MM (INCH)	±
TOLERANCES EXCEPT AS NOTED	±
MM	±
0 ±0.20	±
.00 ±0.15	±
.000 ±0.075	±
ANGLES ±	±
THIRD ANGLE PROJECTION	
DFTO YAN	DATE 07/07/05
CHKD	DATE
INFO	DATE
APPL OSCAR	DATE 01/04/05
MATERIAL :	
QTY :	
FINISH :	
SCALE : 1:1	
TITLE	
FULL RISE ELECTRONIC CO., LTD	
L/P DUAL PORTS 6P	
DRAWING NO. GE553016-LA	SIZE REV
/PART NO. SEENOTE	A3 2
DO NOT SCALE DRAWING	SHEET X OF Y

6 5 4 3 2 1

Looking for pricing, stock, or lifecycle information?

Click below to explore more details on WIN SOURCE:

 [View E5562-80AU12-L on WIN SOURCE](#)

 [Pulse Information](#)

Optimize Your Supply Chain with WIN SOURCE Solutions

-  Global Sourcing Solution
-  Obsolete Management
-  Cost Control Management
-  Shortage Management
-  Alternative Solution
-  Excess Inventory Management