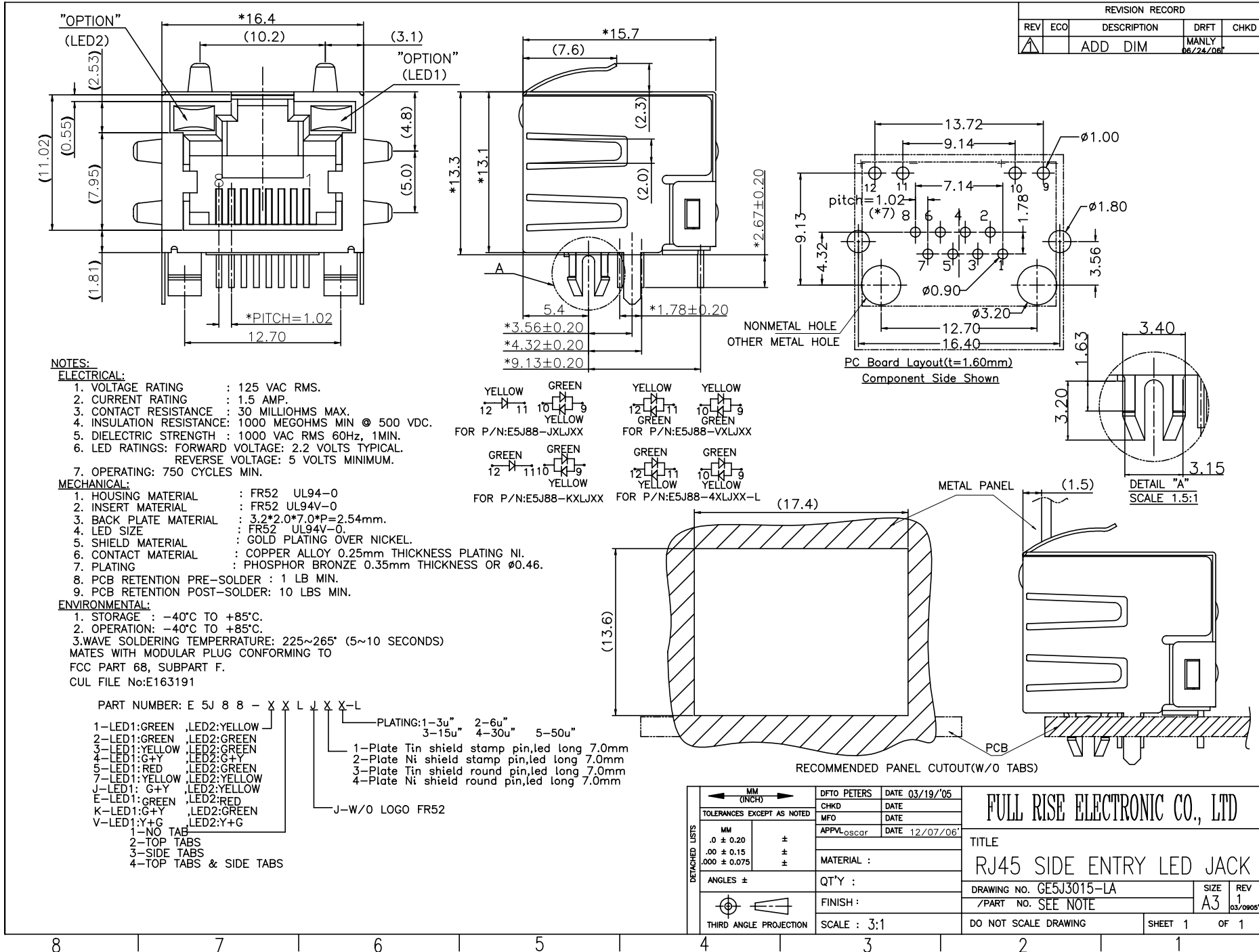




**THE DATASHEET OF
E5J88-11LJ22-L**



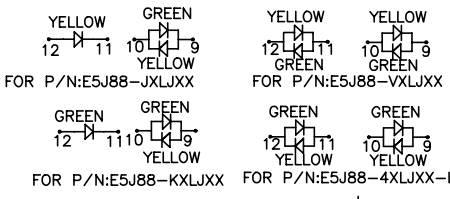


REVISION RECORD				
REV	ECO	DESCRIPTION	DRFT	CHKD
▲		ADD DIM	MANLY 06/24/08*	

- NOTES:**
- ELECTRICAL:**
- VOLTAGE RATING : 125 VAC RMS.
 - CURRENT RATING : 1.5 AMP.
 - CONTACT RESISTANCE : 30 MILLIOHMS MAX.
 - INSULATION RESISTANCE: 1000 MEGOHMS MIN @ 500 VDC.
 - DIELECTRIC STRENGTH : 1000 VAC RMS 60Hz, 1MIN.
 - LED RATINGS: FORWARD VOLTAGE: 2.2 VOLTS TYPICAL.
REVERSE VOLTAGE: 5 VOLTS MINIMUM.
 - OPERATING: 750 CYCLES MIN.
- MECHANICAL:**
- HOUSING MATERIAL : FR52 UL94-0
 - INSERT MATERIAL : FR52 UL94V-0
 - BACK PLATE MATERIAL : 3.2*2.0*7.0*P=2.54mm.
 - LED SIZE : FR52 UL94V-0.
 - SHIELD MATERIAL : GOLD PLATING OVER NICKEL.
 - CONTACT MATERIAL : COPPER ALLOY 0.25mm THICKNESS PLATING NI.
 - PLATING : PHOSPHOR BRONZE 0.35mm THICKNESS OR Ø0.46.
 - PCB RETENTION PRE-SOLDER : 1 LB MIN.
 - PCB RETENTION POST-SOLDER: 10 LBS MIN.

- ENVIRONMENTAL:**
- STORAGE : -40°C TO +85°C.
 - OPERATION: -40°C TO +85°C.
 - WAVE SOLDERING TEMPERATURE: 225~265° (5~10 SECONDS)
- MATES WITH MODULAR PLUG CONFORMING TO
FCC PART 68, SUBPART F.
CUL FILE No:E163191

- PART NUMBER: E 5J 8 8 - X X L J X X -L
- 1-LED1:GREEN ,LED2:YELLOW
 - 2-LED1:GREEN ,LED2:GREEN
 - 3-LED1:YELLOW ,LED2:GREEN
 - 4-LED1:G+Y ,LED2:G+Y
 - 5-LED1:RED ,LED2:GREEN
 - 7-LED1:YELLOW ,LED2:YELLOW
 - J-LED1: G+Y ,LED2:YELLOW
 - E-LED1: GREEN ,LED2:RED
 - K-LED1:G+Y ,LED2:GREEN
 - V-LED1:Y+G ,LED2:Y+G
- PLATING:1-3u" 2-6u" 3-15u" 4-30u" 5-50u"
- Plate Tin shield stamp pin,led long 7.0mm
 - Plate Ni shield stamp pin,led long 7.0mm
 - Plate Tin shield round pin,led long 7.0mm
 - Plate Ni shield round pin,led long 7.0mm
- J-W/O LOGO FR52
- 1-NO TAB
2-TOP TABS
3-SIDE TABS
4-TOP TABS & SIDE TABS



DETACHED LISTS	MM (INCH)	DFTO PETERS	DATE 03/19/05
	TOLERANCES EXCEPT AS NOTED	CHKD	DATE
		MFO	DATE
		APPLVloscar	DATE 12/07/06*
MM	±	MATERIAL :	
.0 ± 0.20	±	QTY :	
.00 ± 0.15	±	FINISH :	
.000 ± 0.075	±	SCALE : 3:1	
ANGLES ±		DO NOT SCALE DRAWING	
THIRD ANGLE PROJECTION		SHEET 1 OF 1	

FULL RISE ELECTRONIC CO., LTD			
TITLE			
RJ45 SIDE ENTRY LED JACK			
DRAWING NO. GE5J3015-LA		SIZE	REV
/PART NO. SEE NOTE		A3	1
		03/0905*	

Looking for pricing, stock, or lifecycle information?

Click below to explore more details on WIN SOURCE:

 [View E5J88-11LJ22-L on WIN SOURCE](#)

 [Pulse Information](#)

Optimize Your Supply Chain with WIN SOURCE Solutions

-  Global Sourcing Solution
-  Obsolete Management
-  Cost Control Management
-  Shortage Management
-  Alternative Solution
-  Excess Inventory Management