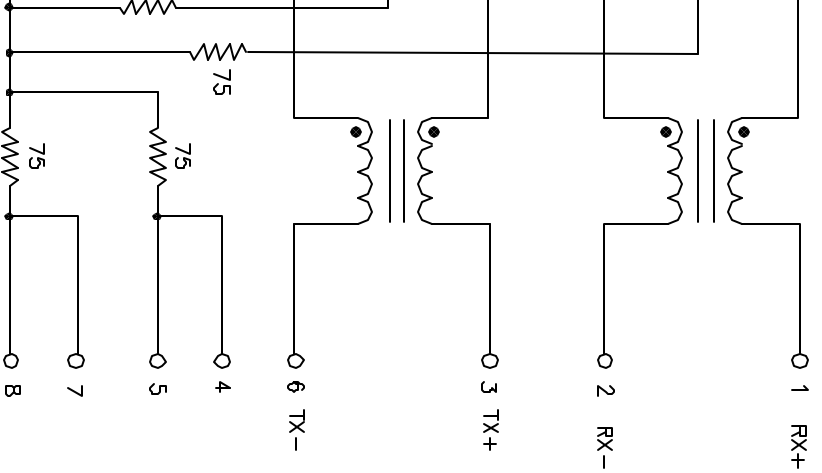




**THE DATASHEET OF  
J8064D649P**



DR PACKAGE SPECIFICATION ITEM 7.

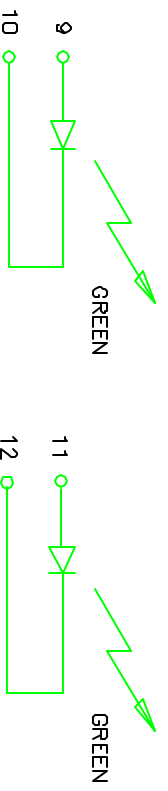


SCHEMATIC



MARK PART WITH "UL MARK"  
PER MARKING PROCEDURE.  
MARK POSITION IS OPTIONAL  
PREFERRED LOCATION IS  
BACK OF THE PART.

BACK VIEW  
FINAL OUTLINE



UNLESS OTHERWISE SPECIFIED, ALL  
DIMENSIONS ARE IN INCHES  
XX ±.01 ANGLES ± 1°  
XXX ±.005  
DO NOT SCALE DRAWING

SIZE SCALE CODE  
A301961  
SCALE NONE Q100 FILE

DWG. NO. J8064D649P-7

SHEET 7 OF 7  
REV. 12



UNCGY	TRANSMIT/RECEIVE (S11)
HZ	-18 dB MIN
HZ	-18 dB MIN
HZ	-18 dB MIN
HZ	-16 dB MIN
HZ	-12 dB MIN
HZ	-12 dB MIN

FIGURE 8  
 NETWORK ANALYZER IN THE S11 MODE AND MEASURE  
 BOTH CHANNELS. THE RETURN LOSS SHALL  
 BE WITHIN THE  
 LIMITS.

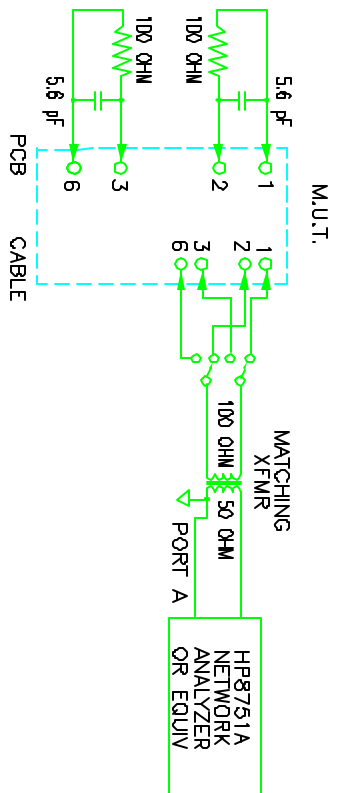
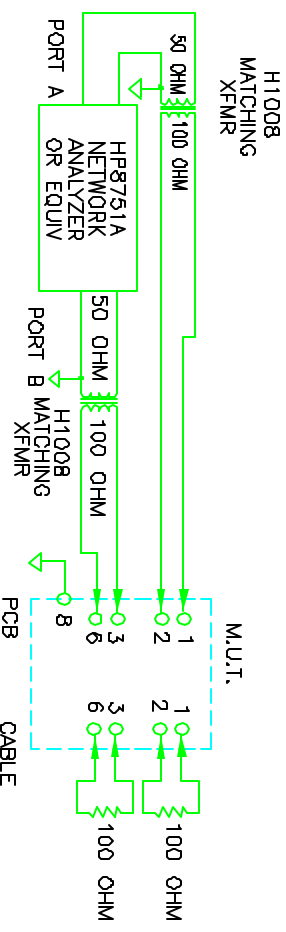


FIGURE 8

TEST) – FIGURE 9

NETWORK ANALYZER IN THE S21 MODE BY SHORTING  
 BOTH CHANNELS. DO A THRU CALIBRATION. MEASURE THE  
 CROSS-TALK ATTENUATION SHALL BE WITHIN THE

UNCGY	ATTENUATION (S21)
HZ	-40 dB MIN
HZ	-40 dB MIN
HZ	-35 dB MIN
HZ	-35 dB MIN
HZ	-30 dB MIN



CROSSTALK  
 FIGURE 9

ALL DIMENSIONS SHOWN, ALL  
 DIMENSIONS ARE IN MILLIMETERS  
 UNLESS OTHERWISE SPECIFIED  
 ANGLES ± 1°  
 FINISHES  
 XX ±.01  
 XXX ±.005  
 DO NOT SCALE DRAWING

SIZE	DWG. CODE	DWG. NO.	REV.
SCALE	NONE	125-J8064	18
CAD FILE	125-J8064-7	SHEET	7 OF 8

3

3

2

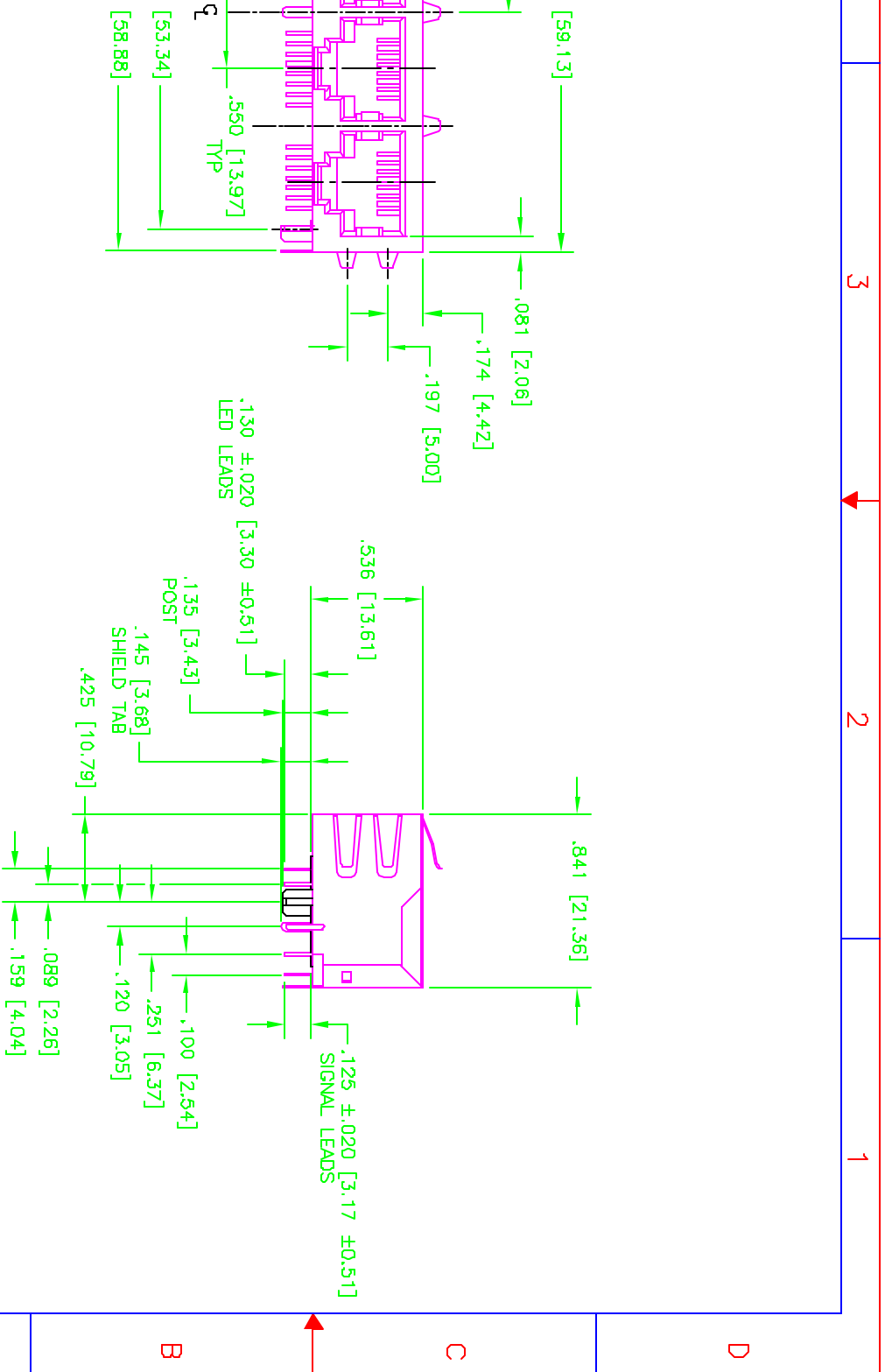
1

A

B

C

D



ALL DIMENSIONS SHOWN, ALL DIMENSIONS ARE IN INCHES, UNLESS OTHERWISE SPECIFIED  
 DO NOT SCALE DRAWING

SIZE	DWG. CODE	DWG. FILE	REV.
<b>B01961</b>		PS-2064.001	G
SCALE	CADD FILE	SHEET	
4/1	PS-2064.001-2	2 OF 3	

3

2

1

A

B

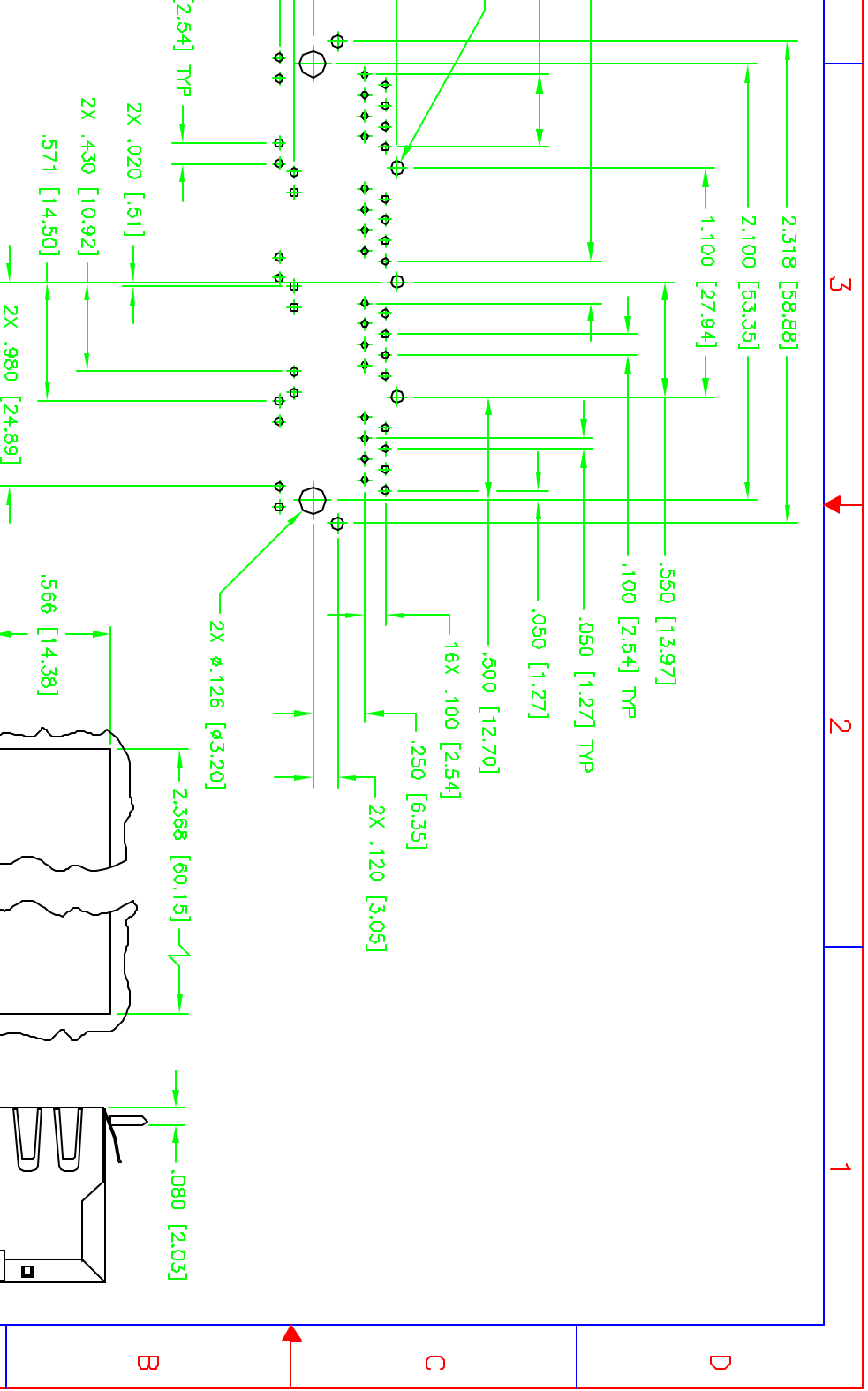
C

D

3

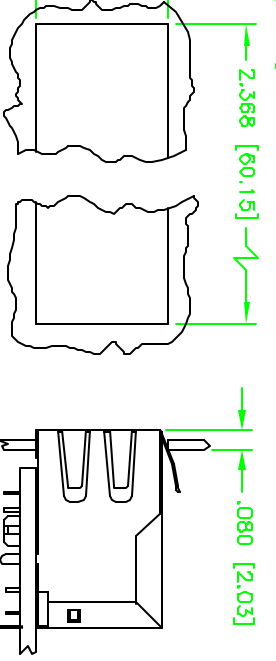
2

1



SUGGESTED PRINTED CIRCUIT BOARD LAYOUT  
 VIEWED FROM COMPONENT SIDE  
 UNLESS OTHERWISE SPECIFIED PCB DIMENSION ARE ±.003

SUGGESTED PANEL CUTOUT



UNLESS OTHERWISE SPECIFIED, ALL DIMENSIONS ARE IN INCHES  
 DECIMALS  
 XX ±.02 ANGLES ± 1°  
 XXX ±.010  
 DO NOT SCALE DRAWING

SIZE	DWG. CODE	DWG. NO.	REV.
<b>B01961</b>		PS-2064.001	G
SCALE	DWG. FILE		SHEET
2/1	PS-2064.001-3		3 OF 3

3

2

1

A

B

C

D

## Looking for pricing, stock, or lifecycle information?

Click below to explore more details on WIN SOURCE:

 [View J8064D649P on WIN SOURCE](#)

 [Pulse Information](#)

## Optimize Your Supply Chain with WIN SOURCE Solutions

-  Global Sourcing Solution
-  Obsolete Management
-  Cost Control Management
-  Shortage Management
-  Alternative Solution
-  Excess Inventory Management