



**THE DATASHEET OF  
HLW6S-2C7LF**





FCIconnect.com

Copyright FCI.

CONFIGURATION OF CUSTOMER DOCUMENTS

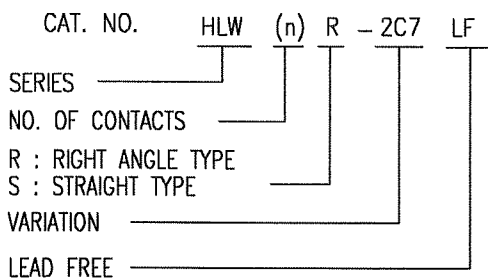
| P/N           | DOCUMENTS | DWG. NO.   | TITLE   |
|---------------|-----------|------------|---|
| HLW_R/S-2C7LF | SPEC      | SC-HLW05   | CONNECTOR USED FOR FPC/FFC WITH 1mm CONTACT SPACING |
|               | CONNECTOR | JSA96403   | CAT NO.TABLE FOR 1mm SPACING CONNECTOR              |
|               |           | JSA96405   | 1mm SPACING CONNECTOR FOR FPC/FFC                   |
|               |           | JSA96406   | 1mm SPACING CONNECTOR FOR FPC/FFC                   |
|               | CABLE     | JSA93382   | RECOMMENDED CABLE(FPC)                              |
|               |           | JSA93383   | RECOMMENDED CABLE(FFC)                              |
|               | MANUAL    | BJM-HLW101 | HANDLING PROCEDURES AND REMARKS                     |

| P/N           | DOCUMENTS | DWG. NO.   | TITLE   |
|---------------|-----------|------------|---|
| HLW_R/S-6C7LF | SPEC      | SC-HLW06   | CONNECTOR USED FOR C/C WITH 1mm CONTACT SPACING |
|               | CONNECTOR | JSA96404   | CAT NO.TABLE FOR 1mm SPACING CONNECTOR          |
|               |           | JSA96407   | 1mm SPACING CONNECTOR FOR C/C                   |
|               |           | JSA96408   | 1mm SPACING CONNECTOR FOR C/C                   |
|               | CABLE     | JSA93626   | RECOMMENDED CABLE(C/C)                          |
|               | MANUAL    | BJM-HLW102 | HANDLING PROCEDURES AND REMARKS                 |

|             |                |     |         |   |                          |                               |  |   |  |            |
|-------------|----------------|-----|---------|---|--------------------------|-------------------------------|--|---|--|------------|
| mat'l. code |                |     |         | surface <sup>58</sup> / tolerance<br>ISO 1302 <input checked="" type="checkbox"/> ISO 406<br>ISO 1101 |                          | projection<br>                |  | product family 58PF/QF  |  | CODE<br>JP |
| ltr         | ecn no         | dr  | date    | tolerances unless otherwise specified   |                          | mm<br>                        |  | title<br>1mm SPACING CONNECTOR<br>DOCUMENT LIST<br>(Cat. No. HLW_R/S-2/6C7LF) |  |            |
| A           | J05-0270       | H.T | 5/11/05 | angles  | linear                   |                               |  |   |  |            |
| B           | J05-0293       | H.T | 5/18/05 |   |                          | scale $\propto$               |  | dwg no sheet 1 of 1 size<br>JSA96418 A4                                       |  |            |
| C           | J05-0517       | H.T | 8/11/05 |   |                          | type Product Customer Drawing |  |   |  |            |
| D           | J06-0449       | H.T | 11/2/06 | dr  | <i>H. Shouji</i> 11/2/06 |                               |  |   |  |            |
|             |                |     |         | enr   | <i>H. Shouji</i> 11/2/06 |                               |  |   |  |            |
|             |                |     |         | chr   | <i>K. Shouji</i> 11/2/06 |                               |  |   |  |            |
|             |                |     |         | appd  | <i>S. Ito</i> 11/2/06    |                               |  |   |  |            |
| sheet index | revision sheet | D   | 1       |   |                          |                               |  |   |  |            |

CAT. NO. & DIMENSIONS

| NO. OF CONTACTS (n) | CAT. NO.         |               | DIMENSIONS (NOTE1) |         |      |
|---------------------|------------------|---------------|--------------------|---------|------|
|                     | RIGHT ANGLE TYPE | STRAIGHT TYPE | A ± 0.3            | B ± 0.1 | C    |
| 4                   | HLW 4R-2C7LF     | HLW 4S-2C7LF  | 6.6                | 5.12    | 3.0  |
| 5                   | HLW 5R-2C7LF     | HLW 5S-2C7LF  | 7.6                | 6.12    | 4.0  |
| 6                   | HLW 6R-2C7LF     | HLW 6S-2C7LF  | 8.6                | 7.12    | 5.0  |
| 7                   | HLW 7R-2C7LF     | HLW 7S-2C7LF  | 9.6                | 8.12    | 6.0  |
| 8                   | HLW 8R-2C7LF     | HLW 8S-2C7LF  | 10.6               | 9.12    | 7.0  |
| 9                   | HLW 9R-2C7LF     | HLW 9S-2C7LF  | 11.6               | 10.12   | 8.0  |
| 10                  | HLW10R-2C7LF     | HLW10S-2C7LF  | 12.6               | 11.12   | 9.0  |
| 11                  | HLW11R-2C7LF     | HLW11S-2C7LF  | 13.6               | 12.12   | 10.0 |
| 12                  | HLW12R-2C7LF     | HLW12S-2C7LF  | 14.6               | 13.12   | 11.0 |
| 13                  | HLW13R-2C7LF     | HLW13S-2C7LF  | 15.6               | 14.12   | 12.0 |
| 14                  | HLW14R-2C7LF     | HLW14S-2C7LF  | 16.6               | 15.12   | 13.0 |
| 15                  | HLW15R-2C7LF     | HLW15S-2C7LF  | 17.6               | 16.12   | 14.0 |
| 16                  | HLW16R-2C7LF     | HLW16S-2C7LF  | 18.6               | 17.12   | 15.0 |
| 17                  | HLW17R-2C7LF     | HLW17S-2C7LF  | 19.6               | 18.12   | 16.0 |
| 18                  | HLW18R-2C7LF     | HLW18S-2C7LF  | 20.6               | 19.12   | 17.0 |
| 19                  | HLW19R-2C7LF     | HLW19S-2C7LF  | 21.6               | 20.12   | 18.0 |
| 20                  | HLW20R-2C7LF     | HLW20S-2C7LF  | 22.6               | 21.12   | 19.0 |
| 21                  | HLW21R-2C7LF     | HLW21S-2C7LF  | 23.6               | 22.12   | 20.0 |
| 22                  | HLW22R-2C7LF     | HLW22S-2C7LF  | 24.6               | 23.12   | 21.0 |
| 23                  | HLW23R-2C7LF     | HLW23S-2C7LF  | 25.6               | 24.12   | 22.0 |
| 24                  | HLW24R-2C7LF     | HLW24S-2C7LF  | 26.6               | 25.12   | 23.0 |
| 25                  | HLW25R-2C7LF     | HLW25S-2C7LF  | 27.6               | 26.12   | 24.0 |
| 26                  | HLW26R-2C7LF     | HLW26S-2C7LF  | 28.6               | 27.12   | 25.0 |
| 27                  | HLW27R-2C7LF     | HLW27S-2C7LF  | 29.6               | 28.12   | 26.0 |
| 28                  | HLW28R-2C7LF     | HLW28S-2C7LF  | 30.6               | 29.12   | 27.0 |
| 29                  | HLW29R-2C7LF     | HLW29S-2C7LF  | 31.6               | 30.12   | 28.0 |
| 30                  | HLW30R-2C7LF     | HLW30S-2C7LF  | 32.6               | 31.12   | 29.0 |
| 31                  | HLW31R-2C7LF     | HLW31S-2C7LF  | 33.6               | 32.12   | 30.0 |
| 32                  | HLW32R-2C7LF     | HLW32S-2C7LF  | 34.6               | 33.12   | 31.0 |



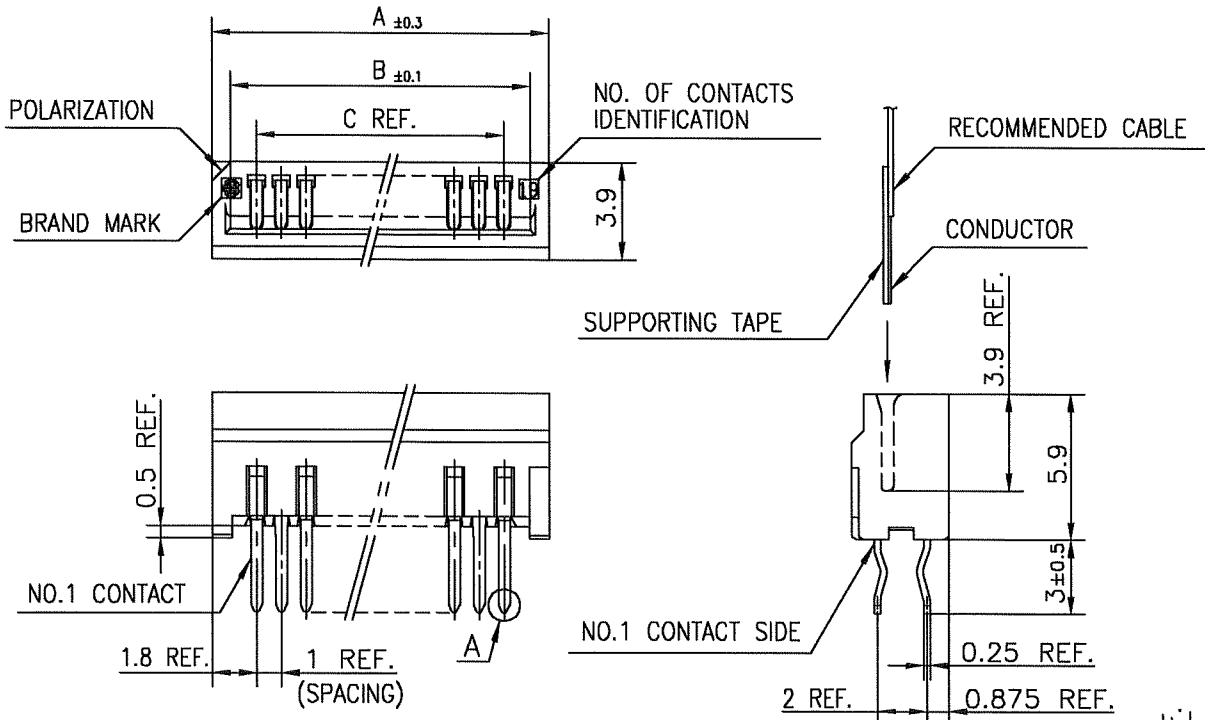
NOTES

1. SEE PART DRAWINGS FOR DIMENSIONS A~C.

|                        |  |                |  |   |  |            |  |   |  |         |  |
|------------------------|--|----------------|--|---|--|------------|--|---|--|---------|--|
| mat'l. code            |  |                |  | surface 5B / tolerance ISO 406 / ISO 1101 |  | projection |  | product family 58PF/QF  |  | CODE JP |  |
| ltr ecn no dr date     |  |                |  | tolerances unless otherwise specified     |  |            |  | title   |  |         |  |
| A J05-0270 H.T 5/10/05 |  |                |  | angles linear                             |  | mm         |  | CAT NO. TABLE FOR 1mm SPACING CONNECTOR (Cat. No. : HLW__R/S-2C7LF) |  |         |  |
| B J06-0449 H.T 11/2/06 |  |                |  |   |  | scale X    |  | dwg no sheet 1 of 1 size  |  |         |  |
|                        |  |                |  | dr engr chr appd                          |  |            |  | JSA 96403 A4  |  |         |  |
|                        |  |                |  |   |  |            |  | type Product Customer Drawing                                       |  |         |  |
| sheet index            |  | revision sheet |  | B 1                                       |  |            |  |   |  | Rev. B  |  |

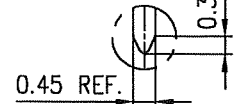
SC-HLW05 form: A4 JSA96405 96406 93382 93383





**MATERIAL**

INSULATOR : PBT RESIN GLASS REINFORCED (UL94V-0)  
 COLOR : BLACK  
 CONTACT : PHOSPHOR BRONZE  
 PLATING : TIN



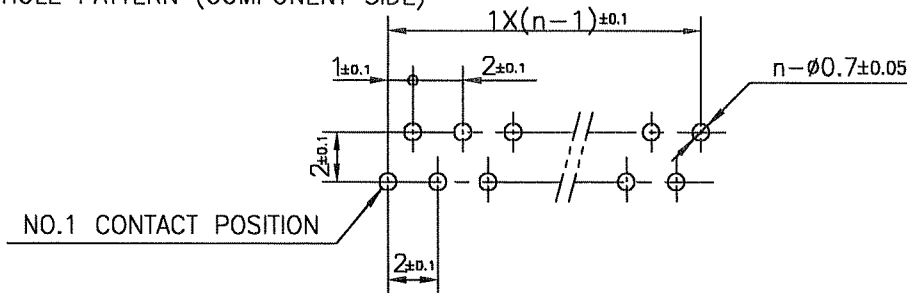
DETAIL A

- NOTE 1. THIS PRODUCT IS STRAIGHT TYPE CONNECTOR.  
 2. THIS PRODUCT MEETS EUROPEAN UNION DIRECTIVES AND OTHER COUNTRY REGULATIONS AS DESCRIBED IN GS-22-008.  
 3. THE HOUSING WILL WITHSTAND EXPOSURE TO 260°C PEAK TEMPERATURE FOR 10 SECONDS IN A WAVE SOLDER APPLICATION WITH A 1.6mm THICK CIRCUIT BOARD.

RECOMMENDED PC BOARD

THICKNESS : 1.2~1.6  
 HOLE PATTERN (COMPONENT SIDE)

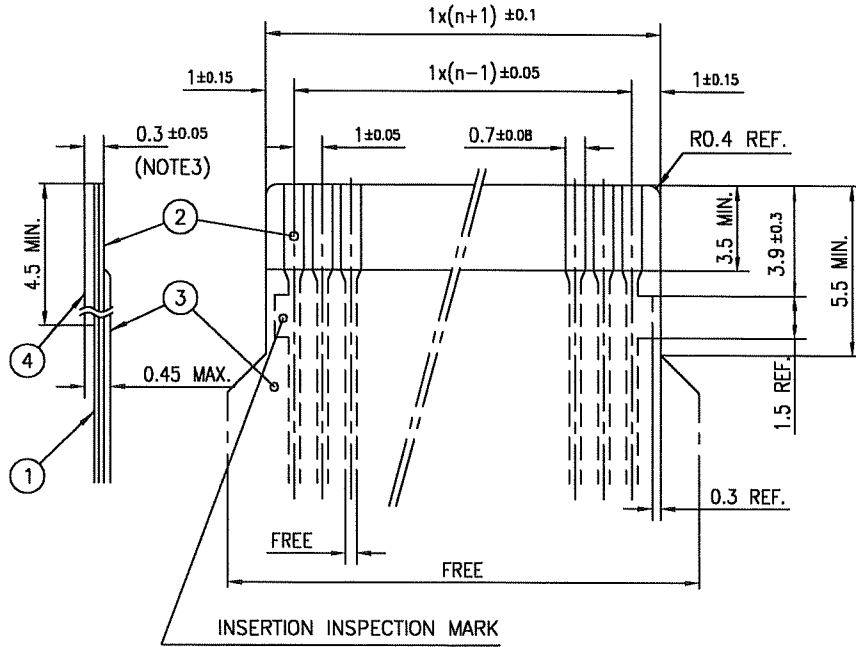
n : NO. OF CONTACTS



|             |          |     |          |   |        |            |      |  |  |         |  |       |
|-------------|----------|-----|----------|---|--------|------------|------|--|--|---------|--|-------|
| mat'l. code |          |     |          | surface 58 / tolerance ISO 406 / ISO 1302 / ISO 1101  |        | projection |      | product family 58QF  |  | CODE JP |  |       |
| ltr         | ecn no   | dr  | date     | tolerances unless otherwise specified   |        | mm         |      | title 1mm SPACING CONNECTOR FOR FPC/FFC (Cat. No. :HLW__S-2C7LF)       |  |         |  |       |
| A           | J05-0270 | H.T | 5/10/05  | ±0.2  |        | mm         |      | dwg no JSA 96406 sheet 1 of 1 size A4<br>type Product Customer Drawing |  |         |  |       |
| B           | J05-0735 | H.T | 10/28/05 | angles  | linear | scale X    |      |  |  |         |  |       |
| C           | J06-0449 | H.T | 11/2/06  |   |        |            |      |  |  |         |  |       |
|             |          |     |          | dr  | engr   | chr        | appd |  |  |         |  |       |
|             |          |     |          | dr <i>[Signature]</i> 11/2/06<br>engr <i>[Signature]</i> 11/2/06<br>chr <i>[Signature]</i> 11/2/06<br>appd <i>[Signature]</i> 11/9/06 |        |            |      | FCI  |  |         |  |       |
| sheet index | revision | C   | sheet    | 1   |        |            |      |  |  |         |  | Rev C |

RECOMMENDED CABLE (FPC)

n : NO. OF CONDUCTORS



| PT. NO. | DESCRIPTION     | MATERIAL                                | THICKNESS (μm) |
|---------|-----------------|---|----------------|
| 1       | BASE FILM       | POLYIMIDE OR POLYESTER OR EQUIVALENT    | 25             |
| 2       | CONDUCTOR       | COPPER FOIL (PLATING : SOLDER 1μm MIN.) | 35             |
| 3       | OVERLAY         | POLYIMIDE OR POLYESTER OR EQUIVALENT    | —              |
| 4       | SUPPORTING TAPE | POLYESTER OR POLYIMIDE OR EQUIVALENT    | 188            |

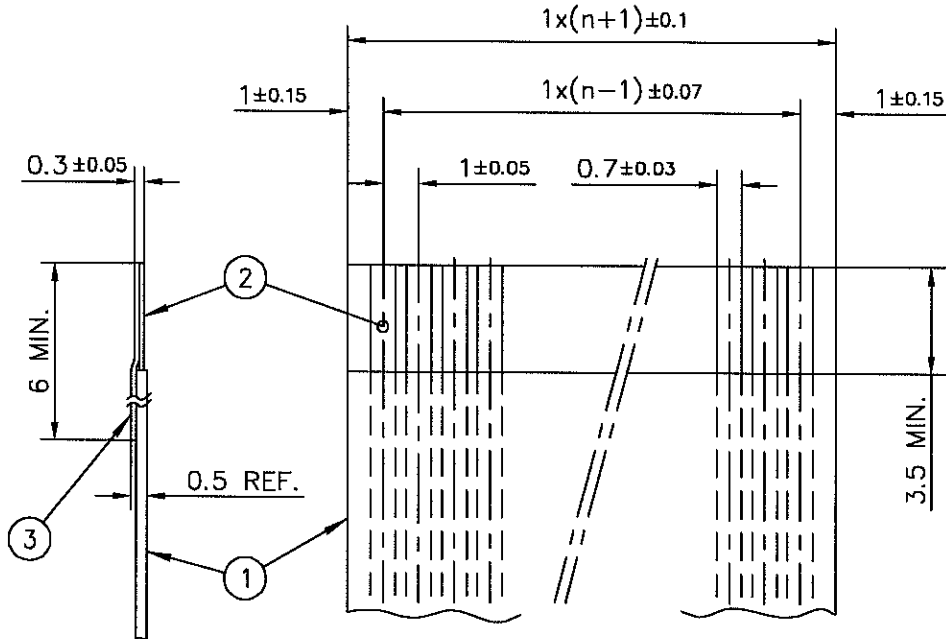
NOTES

1. NO BURR AT EACH PORTION.
2. NO PEELING IN COMMON USE.
3. TOTAL THICKNESS LIMIT OF EACH MATERIAL (INCLUDING ADHESIVE AGENT) IS SPECIFIED.

|                         |  |                |  |   |  |            |  |                               |  |                   |  |
|-------------------------|--|----------------|--|---|--|------------|--|-------------------------------|--|-------------------|--|
| mat'l. code             |  |                |  | surface 58 / tolerance ISO 406 ISO 1101 |  | projection |  | product family 58PF/QF        |  | CODE JP           |  |
| litr ecn no dr date     |  |                |  | tolerances unless otherwise specified   |  | mm         |  | title                         |  |                   |  |
| AA J05-0270 H.T 5/11/05 |  |                |  | angles linear                           |  | mm         |  | RECOMMENDED CABLE (FPC)       |  |                   |  |
| AB J06-0449 H.T 11/2/06 |  |                |  |   |  | scale X    |  | (Cat. No. HLW__R/S-___)       |  |                   |  |
|                         |  |                |  | dr                                      |  | FCI        |  | dwg no                        |  | sheet 1 of 1 size |  |
|                         |  |                |  | enr                                     |  |            |  | JSA 93382                     |  | A4                |  |
|                         |  |                |  | chr                                     |  |            |  | type Product Customer Drawing |  |                   |  |
|                         |  |                |  | appd                                    |  |            |  |                               |  |                   |  |
| sheet index             |  | revision sheet |  | AB 1                                    |  |            |  |                               |  | Rev. AB           |  |

RECOMMENDED CABLE (FFC)

n : NO. OF CONDUCTORS



| PT. NO. | DESCRIPTION     | MATERIAL                                | NOTE                                 |
|---------|-----------------|---|--------------------------------------|
| 1       | INSULATOR       | FLAME RESISTING POLYESTER OR EQUIVALENT | _____                                |
| 2       | CONDUCTOR       | COPPER FOIL                             | PLATING : TIN OR SOLDER<br>1 μm MIN. |
| 3       | SUPPORTING TAPE | FLAME RESISTING POLYESTER OR EQUIVALENT | _____                                |

NOTES

1. NO BURR AT EACH PORTION.
2. NO PEELING IN COMMON USE.

|                         |  |                |  |  |  |            |  |                               |  |         |  |
|-------------------------|--|----------------|--|--|--|------------|--|-------------------------------|--|---------|--|
| mat'l. code             |  |                |  | surface 58 / tolerance ISO 1302 / ISO 406 / ISO 1101 |  | projection |  | product family 58PF/QF        |  | CODE JP |  |
| litr ecn no dr date     |  |                |  | tolerances unless otherwise specified                |  | mm         |  | title                         |  |         |  |
| AA J05-0270 H.T 5/11/05 |  |                |  | angles linear  |  | mm         |  | RECOMMENDED CABLE (FFC)       |  |         |  |
| AB J06-0449 H.T 11/2/06 |  |                |  |  |  | scale X    |  | (Cat. No. HLW__R/S-__)        |  |         |  |
|                         |  |                |  | dr 11/2/06   |  | FCI        |  | dwg no sheet 1 of 1 size      |  |         |  |
|                         |  |                |  | enr 11/2/06  |  |            |  | JSA 93383                     |  | A4      |  |
|                         |  |                |  | chr R. Shouji 11/2/06                                |  |            |  | type Product Customer Drawing |  |         |  |
|                         |  |                |  | appd S. De. davar 11/2/06                            |  |            |  |                               |  |         |  |
| sheet index             |  | revision sheet |  | AB 1   |  |            |  |                               |  | Rev AB  |  |

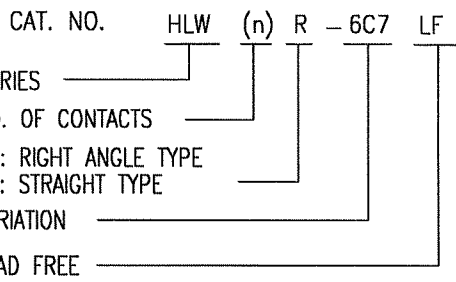
form: A4

1

2

CAT. NO. & DIMENSIONS

| NO. OF CONTACTS (n) | CAT. NO.         |               | DIMENSIONS (NOTE1) |         |      |
|---------------------|------------------|---------------|--------------------|---------|------|
|                     | RIGHT ANGLE TYPE | STRAIGHT TYPE | A ± 0.3            | B ± 0.1 | C    |
| 4                   | HLW 4R-6C7LF     | HLW 4S-6C7LF  | 6.6                | 5.12    | 3.0  |
| 5                   | HLW 5R-6C7LF     | HLW 5S-6C7LF  | 7.6                | 6.12    | 4.0  |
| 6                   | HLW 6R-6C7LF     | HLW 6S-6C7LF  | 8.6                | 7.12    | 5.0  |
| 7                   | HLW 7R-6C7LF     | HLW 7S-6C7LF  | 9.6                | 8.12    | 6.0  |
| 8                   | HLW 8R-6C7LF     | HLW 8S-6C7LF  | 10.6               | 9.12    | 7.0  |
| 9                   | HLW 9R-6C7LF     | HLW 9S-6C7LF  | 11.6               | 10.12   | 8.0  |
| 10                  | HLW10R-6C7LF     | HLW10S-6C7LF  | 12.6               | 11.12   | 9.0  |
| 11                  | HLW11R-6C7LF     | HLW11S-6C7LF  | 13.6               | 12.12   | 10.0 |
| 12                  | HLW12R-6C7LF     | HLW12S-6C7LF  | 14.6               | 13.12   | 11.0 |
| 13                  | HLW13R-6C7LF     | HLW13S-6C7LF  | 15.6               | 14.12   | 12.0 |
| 14                  | HLW14R-6C7LF     | HLW14S-6C7LF  | 16.6               | 15.12   | 13.0 |
| 15                  | HLW15R-6C7LF     | HLW15S-6C7LF  | 17.6               | 16.12   | 14.0 |
| 16                  | HLW16R-6C7LF     | HLW16S-6C7LF  | 18.6               | 17.12   | 15.0 |
| 17                  | HLW17R-6C7LF     | HLW17S-6C7LF  | 19.6               | 18.12   | 16.0 |
| 18                  | HLW18R-6C7LF     | HLW18S-6C7LF  | 20.6               | 19.12   | 17.0 |
| 19                  | HLW19R-6C7LF     | HLW19S-6C7LF  | 21.6               | 20.12   | 18.0 |
| 20                  | HLW20R-6C7LF     | HLW20S-6C7LF  | 22.6               | 21.12   | 19.0 |
| 21                  | HLW21R-6C7LF     | HLW21S-6C7LF  | 23.6               | 22.12   | 20.0 |
| 22                  | HLW22R-6C7LF     | HLW22S-6C7LF  | 24.6               | 23.12   | 21.0 |
| 23                  | HLW23R-6C7LF     | HLW23S-6C7LF  | 25.6               | 24.12   | 22.0 |
| 24                  | HLW24R-6C7LF     | HLW24S-6C7LF  | 26.6               | 25.12   | 23.0 |
| 25                  | HLW25R-6C7LF     | HLW25S-6C7LF  | 27.6               | 26.12   | 24.0 |
| 26                  | HLW26R-6C7LF     | HLW26S-6C7LF  | 28.6               | 27.12   | 25.0 |
| 27                  | HLW27R-6C7LF     | HLW27S-6C7LF  | 29.6               | 28.12   | 26.0 |
| 28                  | HLW28R-6C7LF     | HLW28S-6C7LF  | 30.6               | 29.12   | 27.0 |
| 29                  | HLW29R-6C7LF     | HLW29S-6C7LF  | 31.6               | 30.12   | 28.0 |
| 30                  | HLW30R-6C7LF     | HLW30S-6C7LF  | 32.6               | 31.12   | 29.0 |
| 31                  | HLW31R-6C7LF     | HLW31S-6C7LF  | 33.6               | 32.12   | 30.0 |
| 32                  | HLW32R-6C7LF     | HLW32S-6C7LF  | 34.6               | 33.12   | 31.0 |

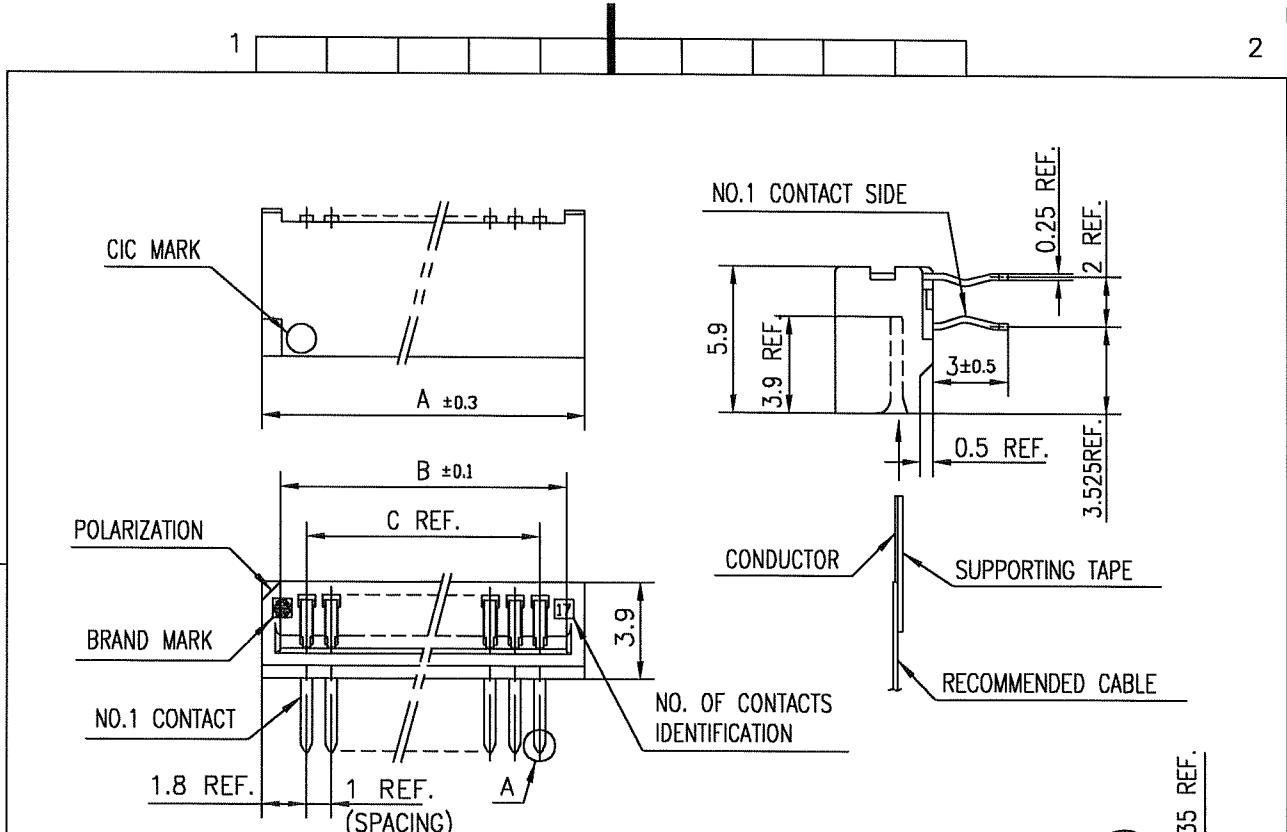


NOTES

1. SEE PART DRAWINGS FOR DIMENSIONS A~C.

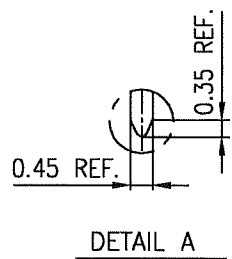
|                        |  |  |  |                                       |  |                              |  |            |  |   |  |                               |  |
|------------------------|--|--|--|---------------------------------------|--|------------------------------|--|------------|--|---|--|-------------------------------|--|
| mat'l. code            |  |  |  | surface 5B / ISO 1302 ✓               |  | tolerance ISO 406 / ISO 1101 |  | projection |  | product family 58PF/QF  |  | CODE JP                       |  |
| ltr ecn no dr date     |  |  |  | tolerances unless otherwise specified |  |                              |  |            |  | title CAT NO. TABLE FOR 1mm SPACING CONNECTOR (Cat. No. : HLW__R/S-6C7LF) |  |                               |  |
| A J05-0270 H.T 5/10/05 |  |  |  | angles                                |  | linear                       |  | scale X    |  | dwg no JSA 96404 sheet 1 of 1 size A4                                     |  |                               |  |
| B J06-0449 H.T 11/2/06 |  |  |  | dr                                    |  | engr                         |  | chr        |  | appd  |  | type Product Customer Drawing |  |
| sheet index            |  |  |  | revision B                            |  | sheet 1                      |  |            |  |   |  | Rev. B                        |  |

SC-HLW06 JSA96407 96408 93626 form: A4



**MATERIAL**

INSULATOR : PBT RESIN GLASS REINFORCED (UL94V-0)  
 COLOR : BLACK  
 CONTACT : PHOSPHOR BRONZE  
 PLATING : TIN



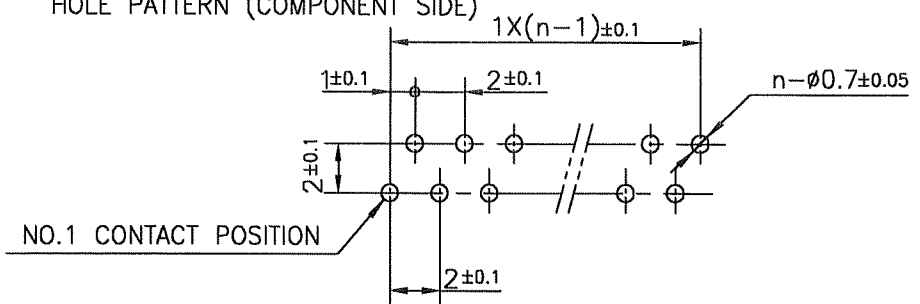
**NOTE**

1. THIS PRODUCT IS RIGHT ANGLE TYPE CONNECTOR.
2. THIS PRODUCT MEETS EUROPEAN UNION DIRECTIVES AND OTHER COUNTRY REGULATIONS AS DESCRIBED IN GS-22-008.
3. THE HOUSING WILL WITHSTAND EXPOSURE TO 260°C PEAK TEMPERATURE FOR 10 SECONDS IN A WAVE SOLDER APPLICATION WITH A 1.6mm THICK CIRCUIT BOARD.

**RECOMMENDED PC BOARD**

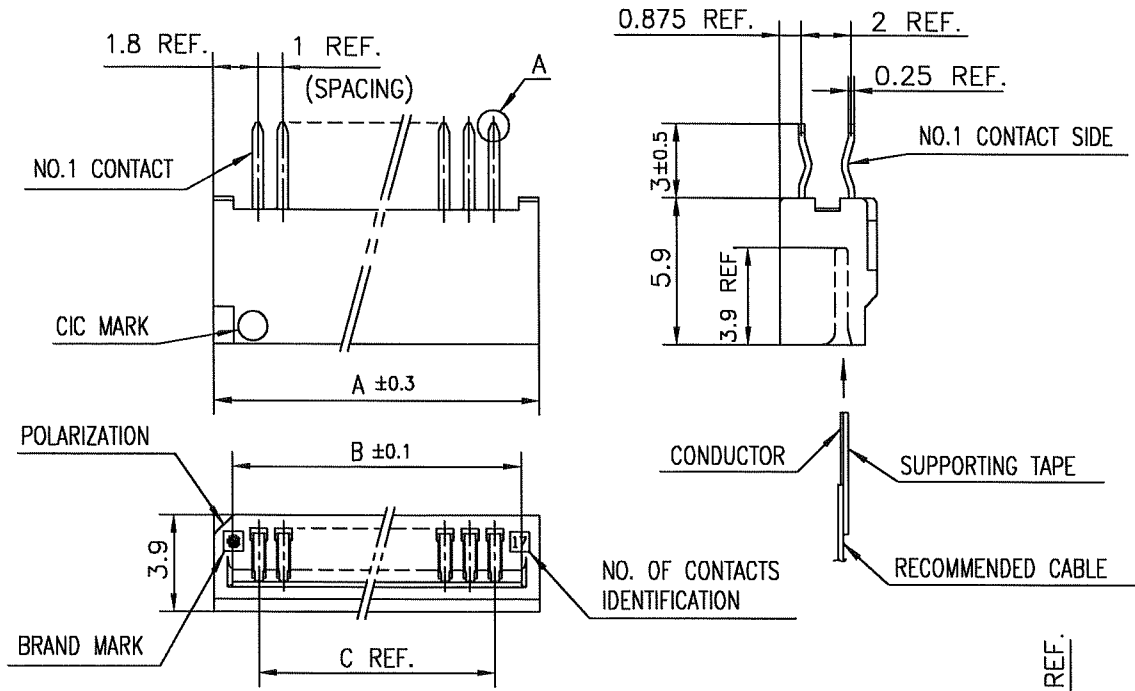
THICKNESS : 1.2~1.6  
 HOLE PATTERN (COMPONENT SIDE)

n : NO. OF CONTACTS



|             |          |                |          |                                       |                    |                              |  |            |           |  |                          |         |      |
|-------------|----------|----------------|----------|---------------------------------------|--------------------|------------------------------|--|------------|-----------|--|--------------------------|---------|------|
| mat'l. code |          |                |          | surface 58 / ISO 1302                 |                    | tolerance ISO 406 / ISO 1101 |  | projection |           | product family 58PF                                    |                          | CODE JP |      |
| ltr         | ecn no   | dr             | date     | tolerances unless otherwise specified |                    |                              |  | mm         |           | title  |                          |         |      |
| A           | J05-0270 | H.T            | 5/10/05  | angles                                |                    | ±0.2                         |  | ↔          |           | 1mm SPACING CONNECTOR FOR CIC (Cat. No. :HLW__R-6C7LF) |                          |         |      |
| B           | J05-0735 | H.T            | 10/28/05 | linear                                |                    |                              |  | ↔          |           |  |                          |         |      |
| C           | J06-0449 | H.T            | 11/2/06  |                                       |                    |                              |  | scale X    |           |  |                          |         |      |
|             |          |                |          | dr                                    | H. Hoshino 11/2/06 |                              |  |            | dwg no    |  | sheet 1 of 1             |         | size |
|             |          |                |          | enr                                   | H. Hoshino 11/2/06 |                              |  |            | JSA 96407 |  |                          |         | A4   |
|             |          |                |          | chr                                   | K. Shoyji 11/2/06  |                              |  |            | type      |  | Product Customer Drawing |         |      |
|             |          |                |          | appd                                  | S. Oudeman 11/2/06 |                              |  |            |           |  |                          |         |      |
| sheet index |          | revision sheet |          | C                                     |                    |                              |  |            |           |  |                          | Rev. C  |      |

SC-HLW06 form: A4 JSA96404



MATERIAL

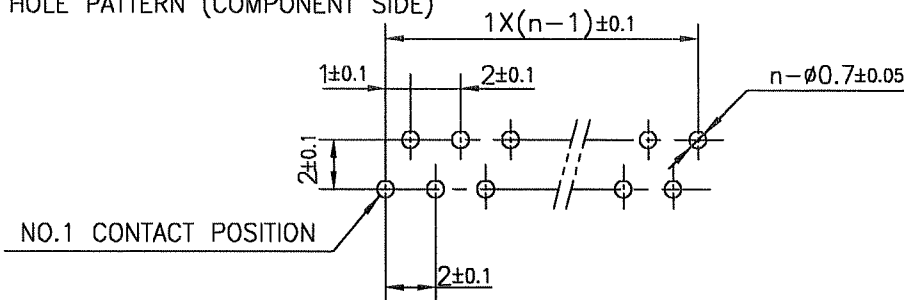
INSULATOR : PBT RESIN GLASS REINFORCED (UL94V-0)  
 COLOR : BLACK  
 CONTACT : PHOSPHOR BRONZE  
 PLATING : TIN

NOTE

1. THIS PRODUCT IS STRAIGHT TYPE CONNECTOR.
2. THIS PRODUCT MEETS EUROPEAN UNION DIRECTIVES AND OTHER COUNTRY REGULATIONS AS DESCRIBED IN GS-22-008.
3. THE HOUSING WILL WITHSTAND EXPOSURE TO 260°C PEAK TEMPERATURE FOR 10 SECONDS IN A WAVE SOLDER APPLICATION WITH A 1.6mm THICK CIRCUIT BOARD.

RECOMMENDED PC BOARD

THICKNESS : 1.2~1.6  
 HOLE PATTERN (COMPONENT SIDE)



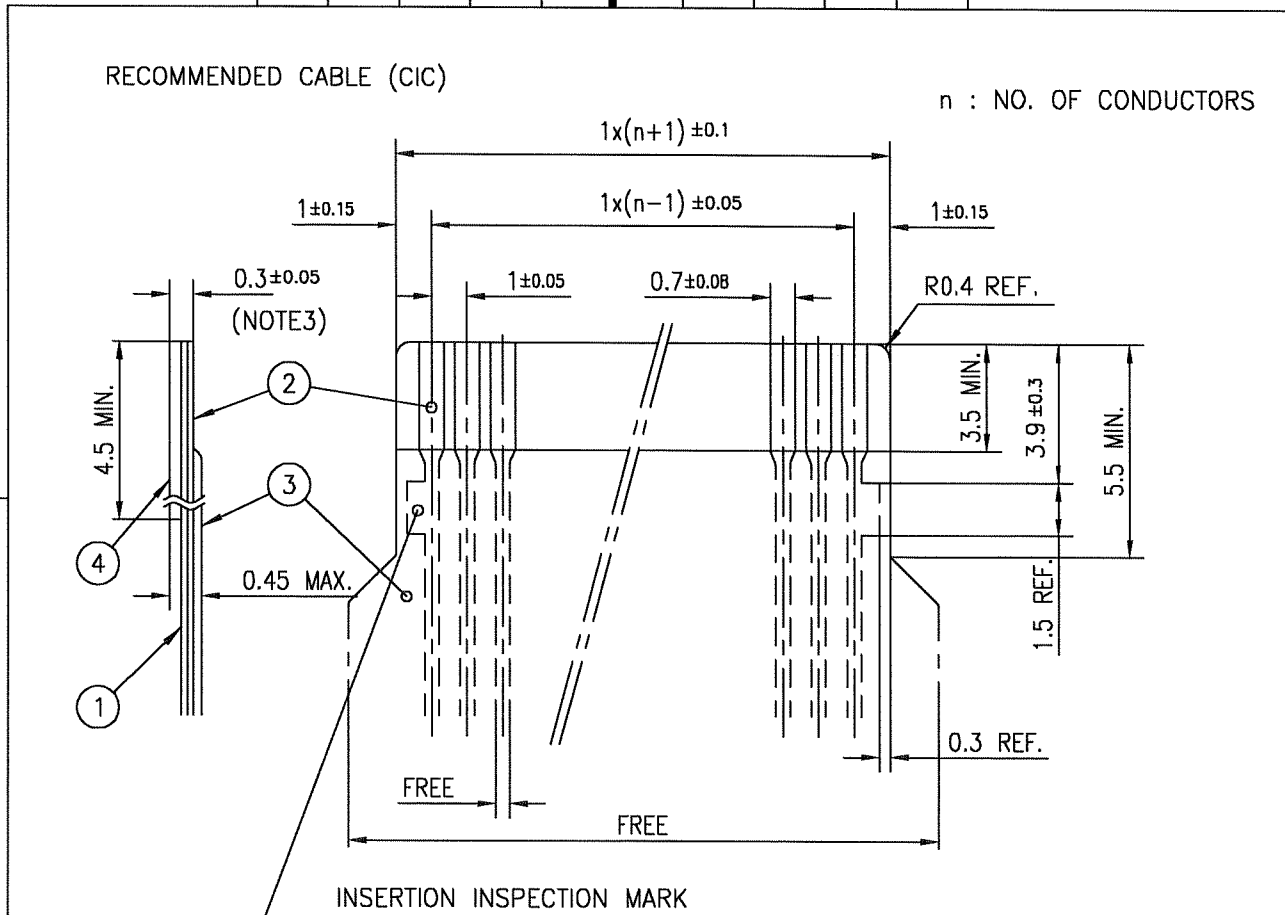
n : NO. OF CONTACTS

|             |          |     |                |  |        |            |  |  |  |         |        |
|-------------|----------|-----|----------------|--|--------|------------|--|--|--|---------|--------|
| mat'l. code |          |     |                | surface 58 / tolerance ISO 406 / ISO 1302 / ISO 1101 |        | projection |  | product family 58QF                                    |  | CODE JP |        |
| ltr         | ecn no   | dr  | date           | tolerances unless otherwise specified                |        | mm         |  | title  |  |         |        |
| A           | J05-0270 | H.T | 5/10/05        | ±0.2   |        | mm         |  | 1mm SPACING CONNECTOR FOR CIC (Cat. No. :HLW__S-6C7LF) |  |         |        |
| B           | J05-0735 | H.T | 10/28/05       | angles   | linear | scale X    |  | dwg no JSA 96408 sheet 1 of 1 size A4                  |  |         |        |
| C           | J06-0449 | H.T | 11/2/01        |  |        | FCI        |  | type Product Customer Drawing                          |  |         |        |
| sheet index |          |     | revision sheet | C  |        |            |  |  |  |         | Rev. c |



FCIconnect.com

Copyright FCI.



| PT. NO. | DESCRIPTION     | MATERIAL                             | THICKNESS ( $\mu\text{m}$ ) |     |
|---------|-----------------|--------------------------------------|-----------------------------|-----|
| 1       | BASE FILM       | POLYESTER OR EQUIVALENT              | 75                          | 25  |
| 2       | CONDUCTOR       | CARBON PASTE OVER SILVER PASTE       | 10 MIN.                     |     |
| 3       | OVERLAY         | POLYIMIDE OR POLYESTER OR EQUIVALENT | —                           |     |
| 4       | SUPPORTING TAPE | POLYESTER OR POLYIMIDE OR EQUIVALENT | 188                         | 250 |



NOTES

1. NO BURR AT EACH PORTION.
2. NO PEELING IN COMMON USE.
3. TOTAL THICKNESS LIMIT OF EACH MATERIAL (INCLUDING ADHESIVE AGENT) IS SPECIFIED.

|                         |  |                |  |                                       |  |                                 |  |            |  |   |  |         |  |
|-------------------------|--|----------------|--|---------------------------------------|--|---------------------------------|--|------------|--|---|--|---------|--|
| mat'l. code             |  |                |  | surface ISO 1302 ✓                    |  | tolerance ISO 406 ✓<br>ISO 1101 |  | projection |  | product family 58PF/QF                            |  | CODE JP |  |
| ltr ecn no dr date      |  |                |  | tolerances unless otherwise specified |  |                                 |  | mm         |  | title   |  |         |  |
| AA J05-0270 H.T 5/11/05 |  |                |  | angles linear                         |  |                                 |  | mm         |  | RECOMMENDED CABLE (CIC)<br>(Cat. No. HLW__R/S-__) |  |         |  |
| AB J06-0449 H.T 11/2/06 |  |                |  |                                       |  |                                 |  | scale X    |  | dwg no sheet 1 of 1 size                          |  |         |  |
|                         |  |                |  | dr <i>H. Saito</i> 11/2/06            |  |                                 |  |            |  | JSA 93626 A4                                      |  |         |  |
|                         |  |                |  | enr <i>H. Saito</i> 11/2/06           |  |                                 |  |            |  | type Product Customer Drawing                     |  |         |  |
|                         |  |                |  | chr <i>K. Shouji</i> 11/2/06          |  |                                 |  |            |  |   |  |         |  |
|                         |  |                |  | appd <i>S. Nakano</i> 11/7/06         |  |                                 |  |            |  |   |  |         |  |
| sheet index             |  | revision sheet |  | AB 1                                  |  |                                 |  |            |  |   |  | Rev. AB |  |

## Looking for pricing, stock, or lifecycle information?

Click below to explore more details on WIN SOURCE:

-  [View HLW6S-2C7LF on WIN SOURCE](#)
-  [Amphenol FCI Information](#)

## Optimize Your Supply Chain with WIN SOURCE Solutions

-  Global Sourcing Solution
-  Obsolete Management
-  Cost Control Management
-  Shortage Management
-  Alternative Solution
-  Excess Inventory Management