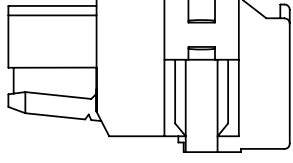
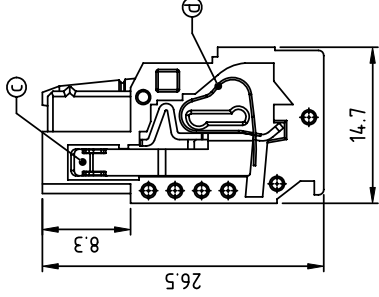
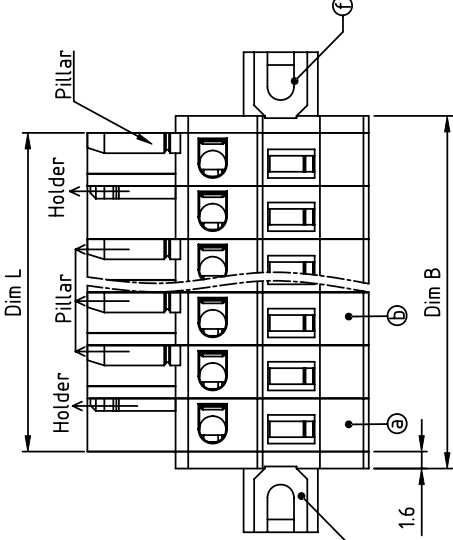
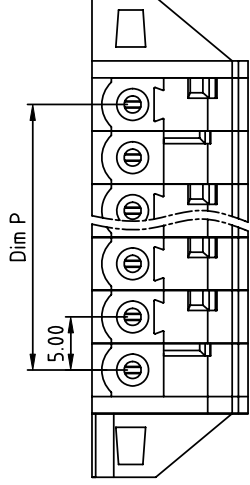




**THE DATASHEET OF
HI12015200J0G**



PRODUCT NUMBER	PITCH
Hlxx01x200J0G	5.00 mm



- Material:
- Item ① Term
 - Item ② Term
 - Item ③ Femia
 - Item ④ Sprin
 - Item ⑤ Left
 - Item ⑥ Right

- Electrical:
- Voltage rati
 - Current rati
 - Wire range:
 - Solid wire(A
 - Stranded wi
 - Wire strip le
 - Withstandin
 - Operating te

Layout of Holder and Pillar:

2P	Holder+Pillar
3P	Holder+Holder+Pillar
4P	Holder+Pillar+Holder+Pillar
5P	Holder+Pillar+Pillar+Holder+Pillar
5P over	Holder+Pillar+...+Pillar+Holder+Pillar

DIMENSION

Dim L=Nx5.0
Dim P=(N-1)x5.0
Dim B=Nx5.0+3.2

N=Number of poles

Poles	Tolerance
2P	±0.10
3P-6P	±0.15
7P-12P	±0.20
13P-18P	±0.30
19P-24P	±0.40

PART NO.: HI XX 01 X 2 00J0 G

- End stackable 0 Black (RAL9005)
 - No. of poles 2 Red (RAL3001/D)
 - 02 2 poles 3 Orange(RAL2011/P)
 - 03 3 poles 4 Yellow(RAL1018/A)
 - ... 5 Green(RAL6018/T)
 - 24 24 poles 6 Blue (RAL5015/A)
 - 8 Grey(RAL7035/D)
 - 9 White(RAL1102)
 - c Green(RAL6018/U)
- Color
- RohS compliant (lead<4%) In copper Alloy

mat'l. code		t		t	
ltr	ecn no	dr	date	ASME	Y14.5
					A
				tolerances unless oth	
				angles	
				X	
				X±1°	
				dr	EVIN ZHON
				engr	EVIN ZHON
				chr	HANKE FEN
				appd	SHI JUN
sheet	revision	A			
index	sheet	1			

form: A4mmXLc



1

2

PDS: Rev

Looking for pricing, stock, or lifecycle information?

Click below to explore more details on WIN SOURCE:

-  [View HI12015200J0G on WIN SOURCE](#)
-  [Amphenol FCI Information](#)

Optimize Your Supply Chain with WIN SOURCE Solutions

-  Global Sourcing Solution
-  Obsolete Management
-  Cost Control Management
-  Shortage Management
-  Alternative Solution
-  Excess Inventory Management