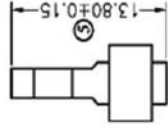
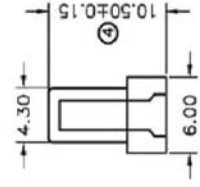
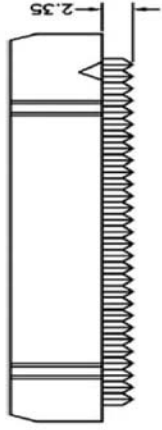
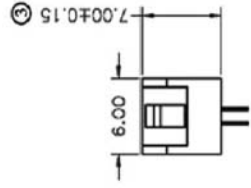


DIMENSIONS		
POSITION	A	B
06P	12.18	05.08
08P	14.72	07.62
10P	17.26	10.16
12P	19.80	12.70
14P	22.34	15.24
16P	24.88	17.78
18P	27.42	20.32
20P	29.96	22.86



POSITION	A	B
60P	80.74	76.54
64P	85.82	81.62

**MATERIALS:**  
 INSULATOR: P.B.T. 30% GLASS FIBER  
 CONTACT MATERIAL: BRASS OR COPPER  
 UNDERPLATE: NICKEL  
 CONTACT AREA: 1.5 CM<sup>2</sup>  
 ELECTRICAL: 1.0 CM<sup>2</sup>  
 CURRENT RATING: 1 AMP.  
 INSULATION RESISTANCE: 1000 MΩ  
 DIELECTRIC WITHSTANDING: 500 V  
 OPERATING TEMPERATURE: -55°C TO +125°C



Scale	1:1
TOLERANCE	
X.X	±0.40
X.XX	±0.25
X.XXX	±0.15
Angle	±3°



Modification		Date	Name

Item	Name
AW	10.19.11
AW	Chappell
Titel	
Dra	



## Looking for pricing, stock, or lifecycle information?

Click below to explore more details on WIN SOURCE:

-  [View H3BBH-1418M on WIN SOURCE](#)
-  [Assmann WSW Components Information](#)

## Optimize Your Supply Chain with WIN SOURCE Solutions

-  Global Sourcing Solution
-  Obsolete Management
-  Cost Control Management
-  Shortage Management
-  Alternative Solution
-  Excess Inventory Management