



THE DATASHEET OF 1SS400TE61



Switching diode

1SS400

●Applications

High speed switching

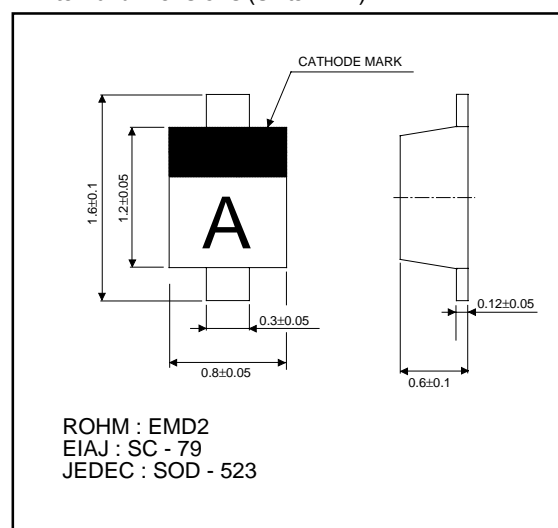
●Features

- 1) Extremely small surface mounting type.(EMD2)
- 2) High Speed.($t_{rr}=1.2\text{ns}$ Typ.)
- 3) High reliability.

●Construction

Silicon epitaxial planar

●External dimensions (Units : mm)



●Absolute maximum ratings ($T_a = 25^\circ\text{C}$)

| Parameter | Symbol | Limits | Unit |
|-------------------------|-------------|------------|------------------|
| Peak reverse voltage | V_{RM} | 90 | V |
| DC reverse voltage | V_R | 80 | V |
| Peak forward current | I_{FM} | 225 | mA |
| Mean rectifying current | I_o | 100 | mA |
| Surge current (1s) | I_{surge} | 500 | mA |
| Junction temperature | T_j | 125 | $^\circ\text{C}$ |
| Storage temperature | T_{stg} | -55 ~ +125 | $^\circ\text{C}$ |

●Electrical characteristics ($T_a = 25^\circ\text{C}$)

| Parameter | Symbol | Min. | Typ. | Max. | Unit | Conditions |
|-------------------------------|----------|------|------|------|---------------|---|
| Forward voltage | V_F | - | - | 1.2 | V | $I_F=100\text{mA}$ |
| Reverse current | I_R | - | - | 0.1 | μA | $V_R=80\text{V}$ |
| Capacitance between terminals | C_T | - | 0.72 | 3.0 | pF | $V_R=0.5\text{V}$, $f=1\text{MHz}$ |
| Reverse recovery time | t_{rr} | - | - | 4 | ns | $V_R=6\text{V}$, $I_F=10\text{mA}$, $R_L=100\Omega$ |

Diodes

●Electrical characteristic curves (Ta = 25°C)

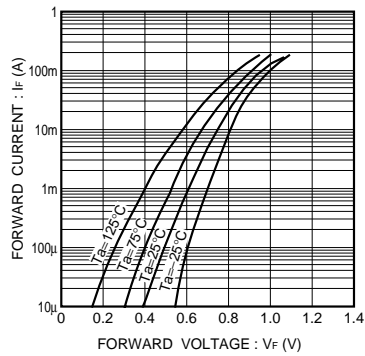


Fig.1 Forward characteristics

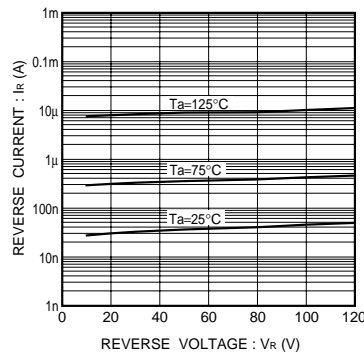


Fig.2 Reverse characteristics

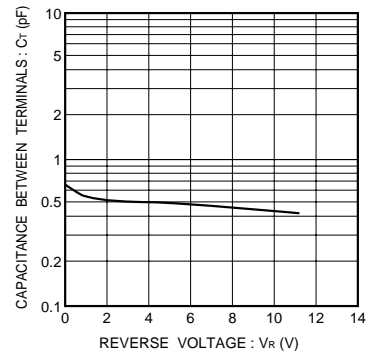


Fig.3 Capacitance between terminals

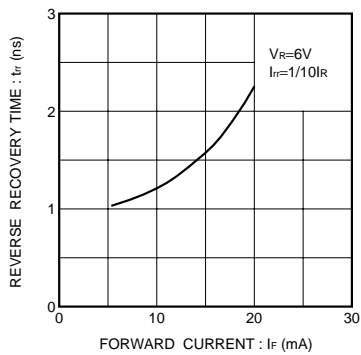


Fig.4 Reverse recovery time characteristics

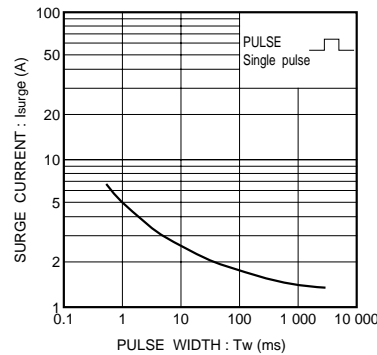


Fig.5 Surge current characteristics

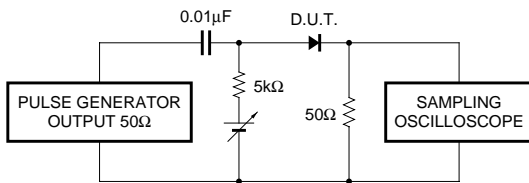


Fig.6 Reverse recovery time (t_{rr}) measurement circuit

Looking for pricing, stock, or lifecycle information?

Click below to explore more details on WIN SOURCE:

- [View 1SS400TE61 on WIN SOURCE](#)
- [Rohm Semiconductor Information](#)

Optimize Your Supply Chain with WIN SOURCE Solutions

- ✓ Global Sourcing Solution
- ✓ Obsolete Management
- ✓ Cost Control Management
- ✓ Shortage Management
- ✓ Alternative Solution
- ✓ Excess Inventory Management