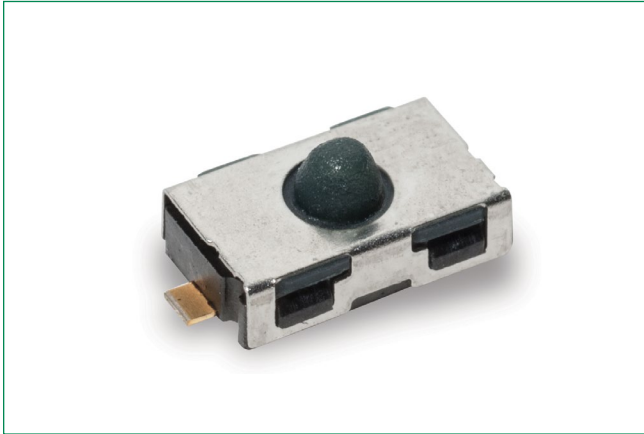


ATS Series

Anti-Tampering Detect Switches



Specifications

Function	Momentary action
Contact Type	SPST normally closed
Terminals	Gullwing type for SMT

Mechanical Specifications

Switching Force	≤ 2 N
Travel to Break	0.7 mm
Total Travel	1.1 mm
Packaging	Switches are delivered on continuous tape, in reels of 2,000 pieces

Electrical Specifications

	Gold	Silver
Max. Power	0.2 VA	1 VA
Min./Max. Voltage	20 mVDC - 32 VDC	
Min./Max. Current	1 μ A - 10 mA	1 mA - 50 mA
Contact Resistance	≤ 350 m Ω	
Insulation Resistance	> 1 G Ω	
Dielectric Strength	≥ 250 Vrms	

Description

When designers of security and anti-tamper systems – as often seen in smart meters and similar products – need an anti-tampering switch, they turn to C&K's ATS series of anti-tampering switches. ATS switches are IP54 sealed to withstand harsh environments and feature vertical detect and a normally closed function.

Features & Benefits

- Normally closed function
- Vertical detect
- Reliable long time compression
- IP54
- Tape & reel
- RoHS compliant and compatible

Applications

- Smart meters
- Alarm systems
- Anti-tamper devices

Environmental Specifications

	Gold	Silver
Operating Temperature	-40°C to 125°C	-40°C to 85°C
Storage Temperature	-55°C to 125°C	-40°C to 85°C

Process

Soldering	Compatible with lead free reflow process
------------------	------------------------------------------

Notes:

Specifications and materials listed above are for switches with standard options. For information on specific and custom switches, consult Customer Service Center.

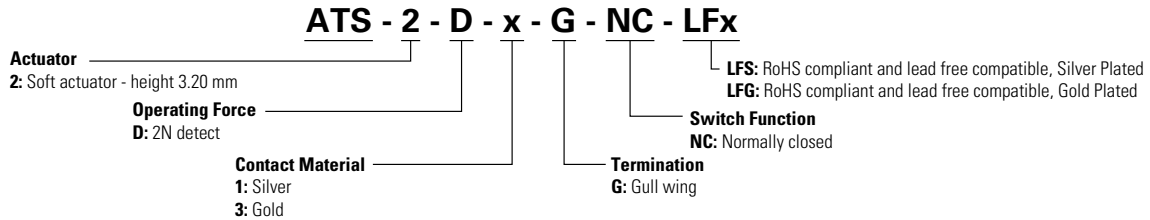
ATS Series

Anti-Tampering Detect Switches



Ordering Number

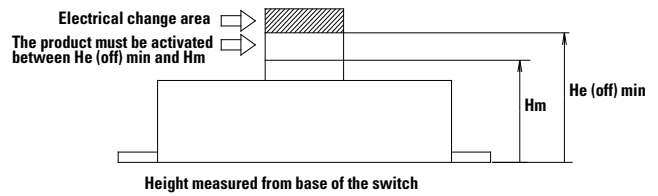
Our easy build-a-switch concept allows you to mix and match options to create the switch you need. To order, select desired option from each category and place it in the appropriate box. For any part number different from those listed above, please consult your local representative.



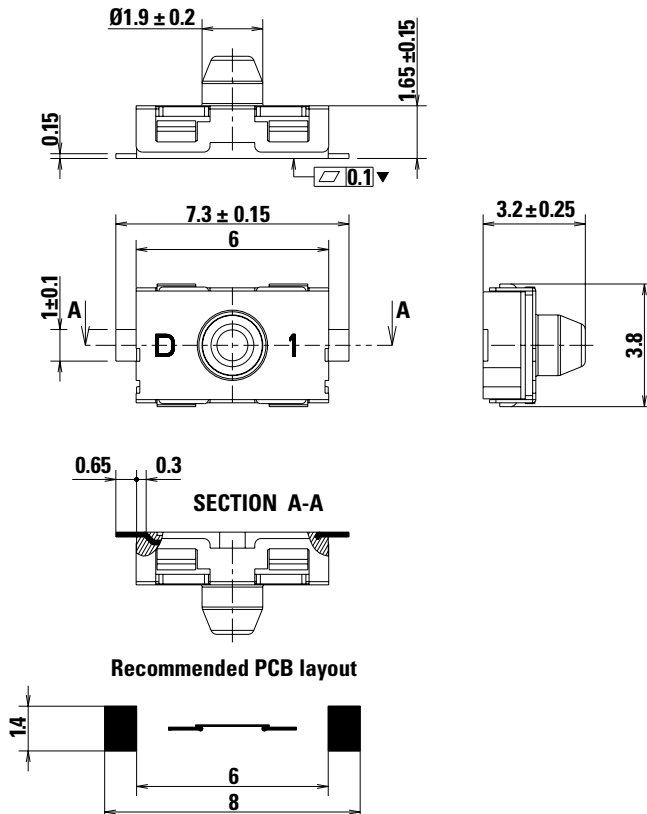
Series

Marking	Part Number
D-1	ATS 2D1G NC LFS
D-3	ATS 2D3G NC LFG

Characteristics



Dimensions (in mm)



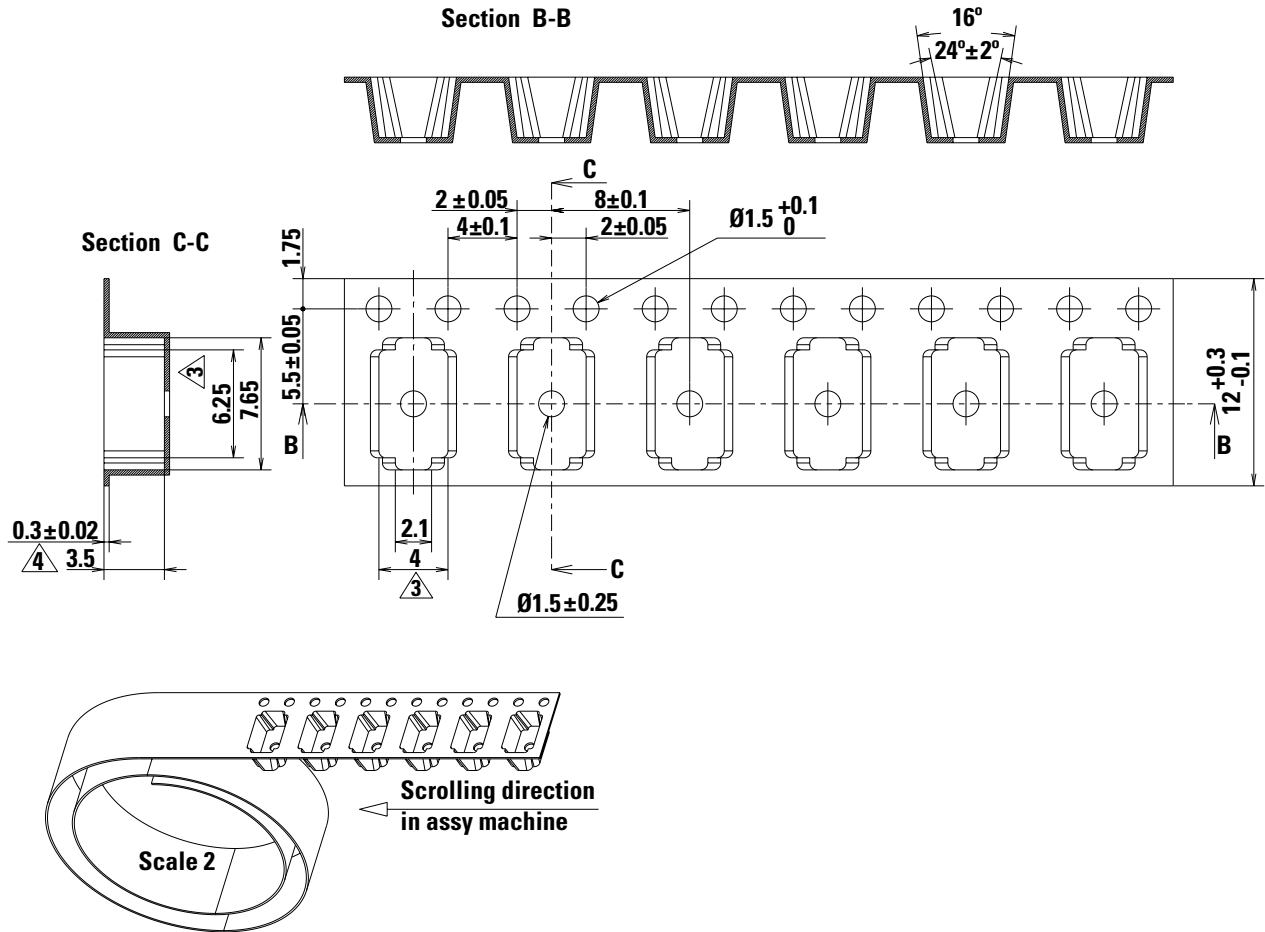
Min. Activation Height (Hm)	Max. Force at Hm = 6N Switch damage can occur if product is actuated below minimum actuation height (Hm)	2.1 mm
Min. Electrical Height (He (OFF) min)	Product height for contact opening Contact closing: the switch must be completely release	2.5 mm

ATS Series

Anti-Tampering Detect Switches



Tape & Reel (in mm)



Notes:

1. 10 sprocket hole pitch cumulative tolerance ± 0.2mm
2. Carrier camber not to exceed 1 mm in 1000 mm
3. Dimension 6.25 and 4 measured on a plane 0.3 mm above the bottom of the pocket
4. Dimension 3.5 measured from a plan on the inside bottom of the pocket to the top surface of the carrier
5. Angle is not marked : 3°

Disclaimer Notice - Information furnished is believed to be accurate and reliable. However, users should independently evaluate the suitability of and test each product selected for their own applications. Littelfuse products are not designed for, and may not be used in, all applications. Read complete Disclaimer Notice at <http://www.littelfuse.com/disclaimer-electronics>.

Looking for pricing, stock, or lifecycle information?

Click below to explore more details on WIN SOURCE:

- ⊖ [View AT2D3G NC LFG on WIN SOURCE](#)
- ⊖ [C&K Components Information](#)

Optimize Your Supply Chain with WIN SOURCE Solutions

- ✓ Global Sourcing Solution
- ✓ Obsolete Management
- ✓ Cost Control Management
- ✓ Shortage Management
- ✓ Alternative Solution
- ✓ Excess Inventory Management