



**THE DATASHEET OF**  
**9140123102**



## Han DD module, crimp female

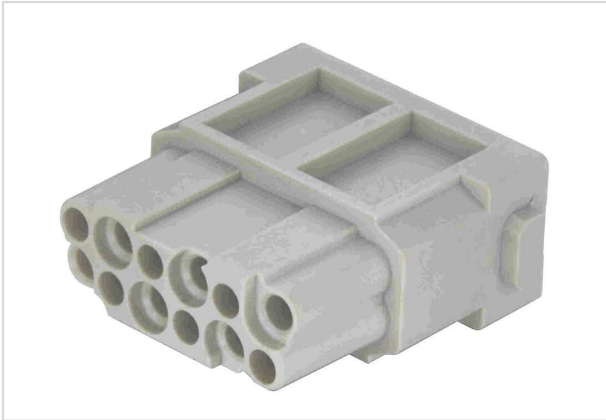


Image is for illustration purposes only. Please refer to product description.

Part number	09 14 012 3102
Specification	Han DD module, crimp female
HARTING eCatalogue	<a href="https://harting.com/09140123102">https://harting.com/09140123102</a>

### Identification

Category	Modules
Series	Han-Modular®
Type of module	Han DD® module
Size of the module	Single module

### Version

Termination method	Crimp termination
Gender	Female
Number of contacts	12
Details	Please order crimp contacts separately.

### Technical characteristics

Conductor cross-section	0.14 ... 2.5 mm <sup>2</sup>
Wire outer diameter	≤3.9 mm
Rated current	10 A
Rated voltage	250 V
Rated impulse voltage	4 kV
Pollution degree	3
Rated voltage acc. to UL	600 V
Insulation resistance	>10 <sup>10</sup> Ω
Limiting temperature	-40 ... +125 °C
Mating cycles	≥10,000



Pushing Performance  
Since 1945

## Technical characteristics

Note on the mating cycles	Mating cycles with other HMC components
---------------------------	---

## Material properties

Material (insert)	Polycarbonate (PC)
Colour (insert)	RAL 7032 (pebble grey)
Material flammability class acc. to UL 94	V-0
RoHS	compliant
ELV status	compliant
China RoHS	e
REACH Annex XVII substances	Not contained
REACH ANNEX XIV substances	Not contained
REACH SVHC substances	Not contained
California Proposition 65 substances	Not contained
Fire protection on railway vehicles	EN 45545-2 (2020-08) + A1 (2023-10)
Requirement set with Hazard Levels	R22 (HL 1-3) R23 (HL 1-3)

## Specifications and approvals

Specifications	IEC 60664-1
	IEC 61984
	IEC 61373 Category 2
UL / CSA	UL 1977 ECBT2.E235076
	CSA-C22.2 No. 182.3
Approvals	DNV GL

## Commercial data

Packaging size	2
Net weight	1 g
Country of origin	Germany
European customs tariff number	85389099
GTIN	5713140161641
eCl@ss	27440217 Module for industrial connectors (power/signals)
ETIM	EC000438
UNSPSC 24.0	39121552

## Looking for pricing, stock, or lifecycle information?

Click below to explore more details on WIN SOURCE:

 [View 9140123102 on WIN SOURCE](#)

 [HARTING](#) Information

## Optimize Your Supply Chain with WIN SOURCE Solutions

-  Global Sourcing Solution
-  Obsolete Management
-  Cost Control Management
-  Shortage Management
-  Alternative Solution
-  Excess Inventory Management