

# PTS647 Series

## Tactile Switch for SMT 4.5 x 4.5 mm



### Description

The PTS647 series is a small 4.5 x 4.5 form factor in SMT version with 3 different heights and 3 available actuation forces, ideal for general usage applications

### Features & Benefits

- Compact size 4.5 x 4.5 mm
- Choice of actuation forces
- SMT terminals
- Tape & reel
- Different actuator heights

### Applications

- Consumer
- Industrial control panels
- Computer products

### Specifications

<b>Function</b>	Momentary action
<b>Contact Arrangement</b>	1 make contact = SPST, N.O.
<b>Terminals</b>	Gullwing type for SMT

**Notes:**  
Specifications listed above are for switches with standard options. For information on specific and custom switches, consult Customer Service Center.

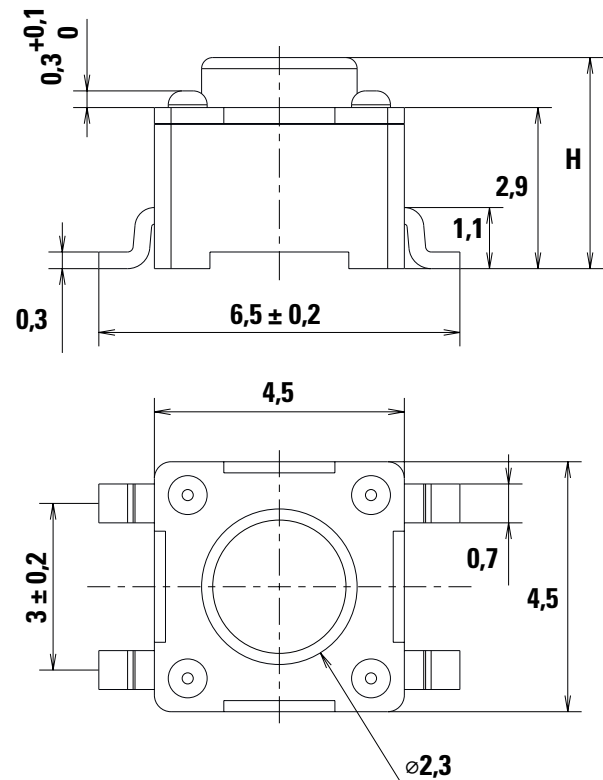
### Electrical Specifications

<b>Dielectric Strength (50 Hz, 1 min.)</b>	250 VA C (1mn)
<b>Contact Resistance</b>	100 mΩ max. initial
<b>Insulation Resistance (100 V)</b>	100 MΩ min.
<b>Bounce Time</b>	≤ 5 ms
<b>Maximum Power</b>	0.6 W
<b>Maximum Voltage</b>	12 VDC
<b>Minimum Voltage</b>	5 VDC
<b>Maximum Current</b>	50 mA
<b>Minimum Current</b>	1 mA

### Environmental Specifications

<b>Operating Temperature</b>	-40°C to 85°C
------------------------------	---------------

### Dimensions (mm)



# PTS647 Series

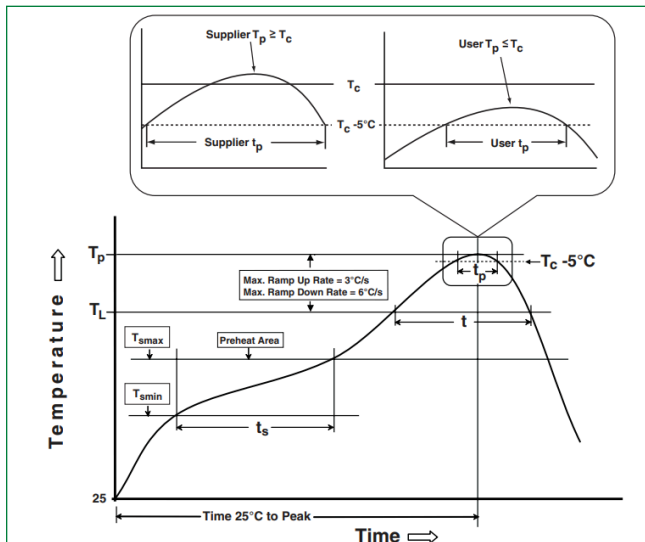
## Tactile Switch for SMT 4.5 x 4.5 mm



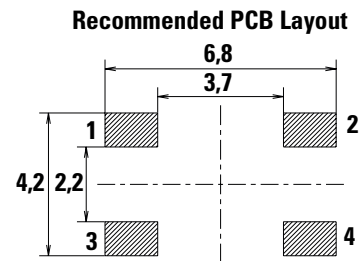
### Mechanical Characteristics

Part #	Operating Force (N)	Travel (mm)	Color	Life	Height (mm)
PTS647SN38SMTR2 LFS	1.0 +/-0.5	0.2 +/-0.1	Black	500,000	3.8
PTS647SN38SMTR2N LFS	1.0 +/-0.5	0.15 +/-0.1	Blue	500,000	3.8
PTS647SM38SMTR2 LFS	1.8 +/-0.5	0.2 +/-0.1	Black	500,000	3.8
PTS647SM38SMTR2N LFS	1.8 +/-0.5	0.15 +/-0.1	Blue	500,000	3.8
PTS647SK38SMTR2 LFS	2.5 +/-0.5	0.25 +/-0.1	Black	200,000	3.8
PTS647SK38SMTR2N LFS	2.5 +/-0.5	0.2 +/-0.1	Blue	200,000	3.8
PTS647SN50SMTR2 LFS	1.0 +/-0.5	0.2 +/-0.1	Black	500,000	5.0
PTS647SN50SMTR2N LFS	1.0 +/-0.5	0.15 +/-0.1	Blue	500,000	5.0
PTS647SM50SMTR2 LFS	1.8 +/-0.5	0.2 +/-0.1	Black	500,000	5.0
PTS647SM50SMTR2N LFS	1.8 +/-0.5	0.15 +/-0.1	Blue	500,000	5.0
PTS647SK50SMTR2 LFS	2.5 +/-0.5	0.25 +/-0.1	Black	200,000	5.0
PTS647SK50SMTR2N LFS	2.5 +/-0.5	0.2 +/-0.1	Blue	200,000	5.0
PTS647SN70SMTR2 LFS	1.0 +/-0.5	0.2 +/-0.1	Black	500,000	7.0
PTS647SN70SMTR2N LFS	1.0 +/-0.5	0.15 +/-0.1	Blue	500,000	7.0
PTS647SM70SMTR2 LFS	1.8 +/-0.5	0.2 +/-0.1	Black	500,000	7.0
PTS647SM70SMTR2N LFS	1.8 +/-0.5	0.15 +/-0.1	Blue	500,000	7.0
PTS647SK70SMTR2 LFS	2.5 +/-0.5	0.25 +/-0.1	Black	200,000	7.0
PTS647SK70SMTR2N LFS	2.5 +/-0.5	0.2 +/-0.1	Blue	200,000	7.0

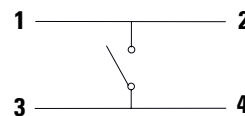
### Soldering Profile



### Terminations (mm)



### Schematic

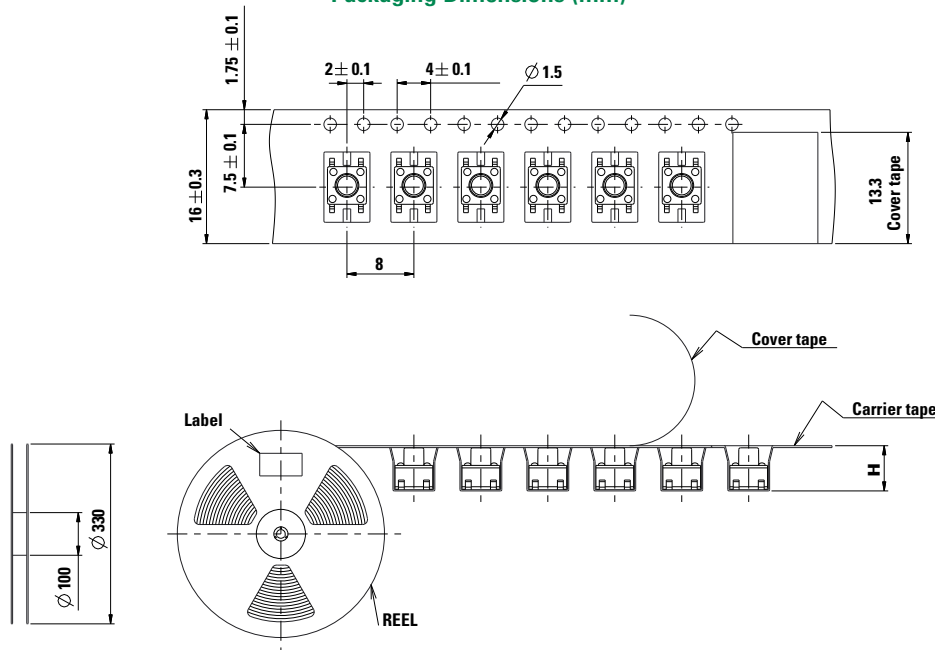


# PTS647 Series

## Tactile Switch for SMT 4.5 x 4.5 mm



### Packaging Dimensions (mm)



### Process

<b>Packaging</b>	In reels of 1,000 pieces for 7.0 mm
	In reels of 1,500 pieces for 5.0 mm
	In reels of 2,000 pieces for 3.8 mm
	Dimensions of reels according to EIA RS481 or IEC 2863.
	External diameter 330 mm ± 2 mm.

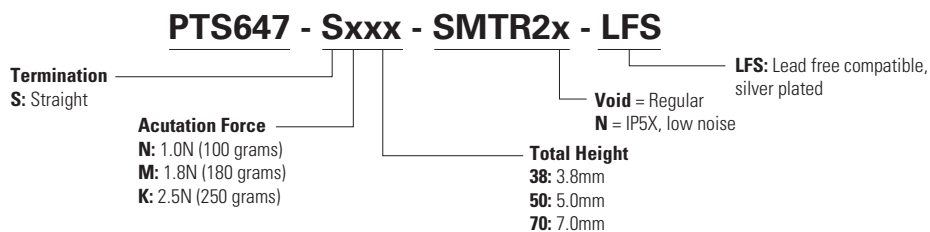
**Notes:**  
Specifications listed above are for switches with standard options. For information on specific and custom switches, consult Customer Service Center. The PTS series is not certified for using in Automotive application and no PPAP. However, in the case of some automotive accessories and specific applications for 2 and 3 wheeled vehicles the PTS is widely used and very suitable. Please contact your local representative to discuss your application and the best switch solution.

### Pocket Height (mm)

Part #	Pocket Height (H)
PTS647 SN38 SMTR2 LFS	4.2 mm
PTS647 SM38 SMTR2 LFS	
PTS647 SK38 SMTR2 LFS	
PTS647 SN50 SMTR2 LFS	5.4 mm
PTS647 SM50 SMTR2 LFS	
PTS647 SK50 SMTR2 LFS	
PTS647 SN70 SMTR2 LFS	7.2 mm
PTS647 SM70 SMTR2 LFS	
PTS647 SK70 SMTR2 LFS	

### Ordering Number

Our easy build-a-switch concept allows you to mix and match options to create the switch you need. To order, select desired option from each category and place it in the appropriate box.



### Liability Limitation

This datasheet does not provide enough information for applications that require a certain level of quality or safety such as automotive, medical systems, or safety equipment. Please contact customer service for the contractual specification package.

**Disclaimer Notice** - Information furnished is believed to be accurate and reliable. However, users should independently evaluate the suitability of and test each product selected for their own applications. Littelfuse products are not designed for, and may not be used in, all applications. Read complete Disclaimer Notice at <http://www.littelfuse.com/disclaimer-electronics>.

## Looking for pricing, stock, or lifecycle information?

Click below to explore more details on WIN SOURCE:

- ⊖ [View PTS647SK50SMTR2LFS on WIN SOURCE](#)
- ⊖ [C&K Components Information](#)

## Optimize Your Supply Chain with WIN SOURCE Solutions

- ✓ Global Sourcing Solution
- ✓ Obsolete Management
- ✓ Cost Control Management
- ✓ Shortage Management
- ✓ Alternative Solution
- ✓ Excess Inventory Management