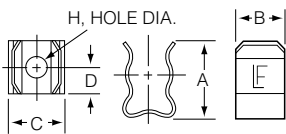
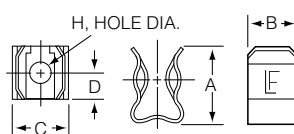


## Product Dimensions

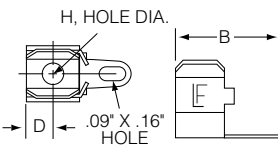
**Earless Clip Type**  
(without fuse stops)



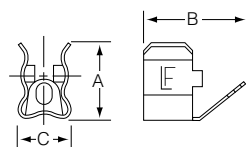
**Ear Clip Type**  
(with fuse stops)



**Straight Solder Lug Type**



**45° Angle Solder Lug Type**



Catalog No.	Fuse Diameter	A	B	C	D	H Diameter
101001 101002 121001 121002	1/4"	.48"	.31"	.30"	.16"	.131"
101003 121004				.56"	.31"	
102064		NA				
105001 105002 125001 125002		13/32"	.75"	.44"	.52"	
107002 127001 127002	.94"		.59"			.65"
109001 109002 129001 129002	13/16"	1.31"	.75"	.88"	.31"	.265"

## Product Characteristics

	101/102/121 Series	105/125 Series	107/127 Series	109/129 Series
<b>Compatible Fuse Size</b>	1/4" Dia Fuses	13/32" Dia Fuses	9/16" Dia Fuses	13/16" Dia Fuses

## Additional Information



**Datasheet 101 Series**



**Resources 101 Series**



**Samples 101 Series**



**Datasheet 102 Series**



**Resources 102 Series**



**Samples 102 Series**



**Datasheet 121 Series**



**Resources 121 Series**



**Samples 121 Series**



**Datasheet 105 Series**



**Resources 105 Series**



**Samples 105 Series**



**Datasheet 125 Series**



**Resources 125 Series**



**Samples 125 Series**



**Datasheet 107 Series**



**Resources 107 Series**



**Samples 107 Series**



**Datasheet 127 Series**



**Resources 127 Series**



**Samples 127 Series**



**Datasheet 109 Series**



**Resources 109 Series**



**Samples 109 Series**



**Datasheet 129 Series**



**Resources 129 Series**



**Samples 129 Series**

## Ordering Information

Ordering PN*	Catalog PN	Material	Plating	Style	Current Level	Packaging
0101 0001	101 001	Spring Brass	Nickel-plated	Ear	15A max	Z
0121 0001	121 001	Beryllium Copper	Silver-plated	Ear	30A max	Z
0105 0001	105 001	Spring Brass	Nickel-plated	Ear	15A max	Z
0125 0001	125 001	Beryllium Copper	Silver-plated	Ear	30A max	Z
0127 0001	127 001	Beryllium Copper	Silver-plated	Ear	30A max	Z
0109 0001	109 001	Phos. Bronze	Nickel-plated	Ear	60A max	H or Z
0129 0001	129 001	Beryllium Copper	Silver-plated	Ear	60A max	H or Z
0101 0002	101 002	Spring Brass	Nickel-plated	Earless	15A max	Z
0121 0002	121 002	Beryllium Copper	Silver-plated	Earless	30A max	Z
0105 0002	105 002	Spring Brass	Nickel-plated	Earless	15A max	Z
0125 0002	125 002	Beryllium Copper	Silver-plated	Earless	30A max	Z
0107 0002	107 002	Spring Brass	Nickel-plated	Earless	30A max	Z
0127 0002	127 002	Beryllium Copper	Silver-plated	Earless	30A max	H or Z
0109 0002	109 002	Phos. Bronze	Nickel-plated	Earless	60A max	H or Z
0129 0002	129 002	Beryllium Copper	Silver-plated	Earless	60A max	H or Z
0101 0003	101 003	Spring Brass	Tin-plated	Ear- Solder Lug 45*	15A max	Z
0121 0004	121 004	Beryllium Copper	Silver-plated	Ear- Solder Lug 45*	30A max	H or Z
0102 0064	102 064	Spring Brass	Tin-plated	Ear-Solder Lug Straight	15A max	H or Z

**Add Suffix to the Ordering PN for Packaging**

"H" =std. package 100 pcs per pack

"Z" =for bulk package

## Looking for pricing, stock, or lifecycle information?

Click below to explore more details on WIN SOURCE:

 [View 01250002Z on WIN SOURCE](#)

 [Littelfuse Inc. Information](#)

## Optimize Your Supply Chain with WIN SOURCE Solutions

-  Global Sourcing Solution
-  Obsolete Management
-  Cost Control Management
-  Shortage Management
-  Alternative Solution
-  Excess Inventory Management