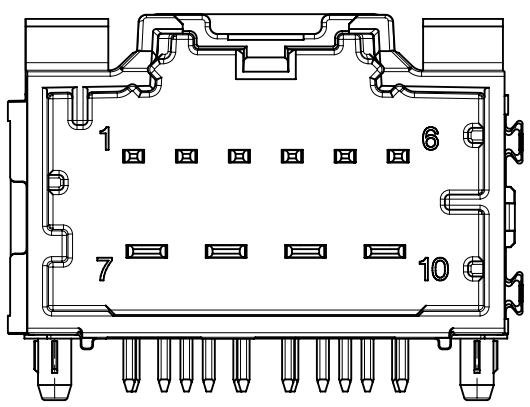
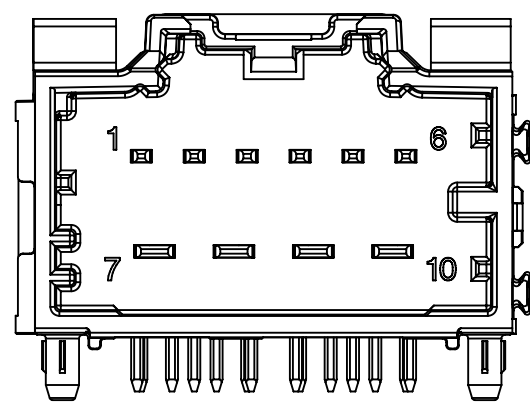


OPTION 'A'

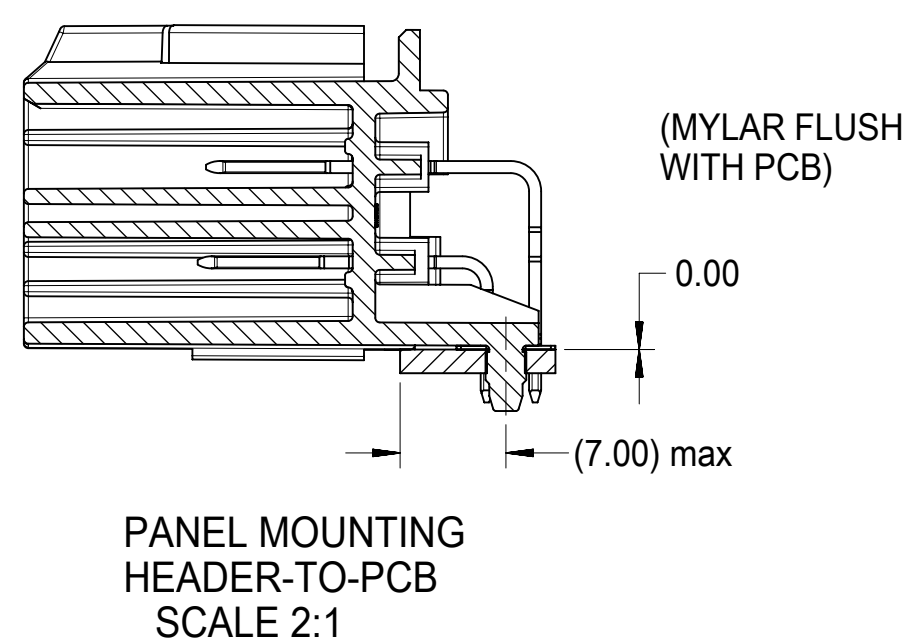
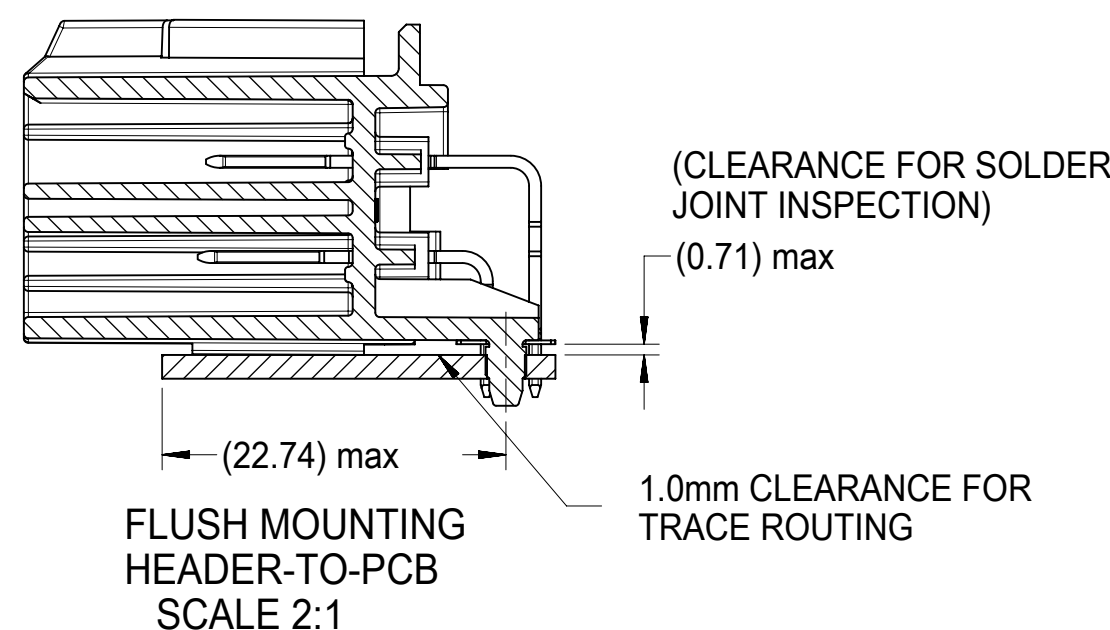
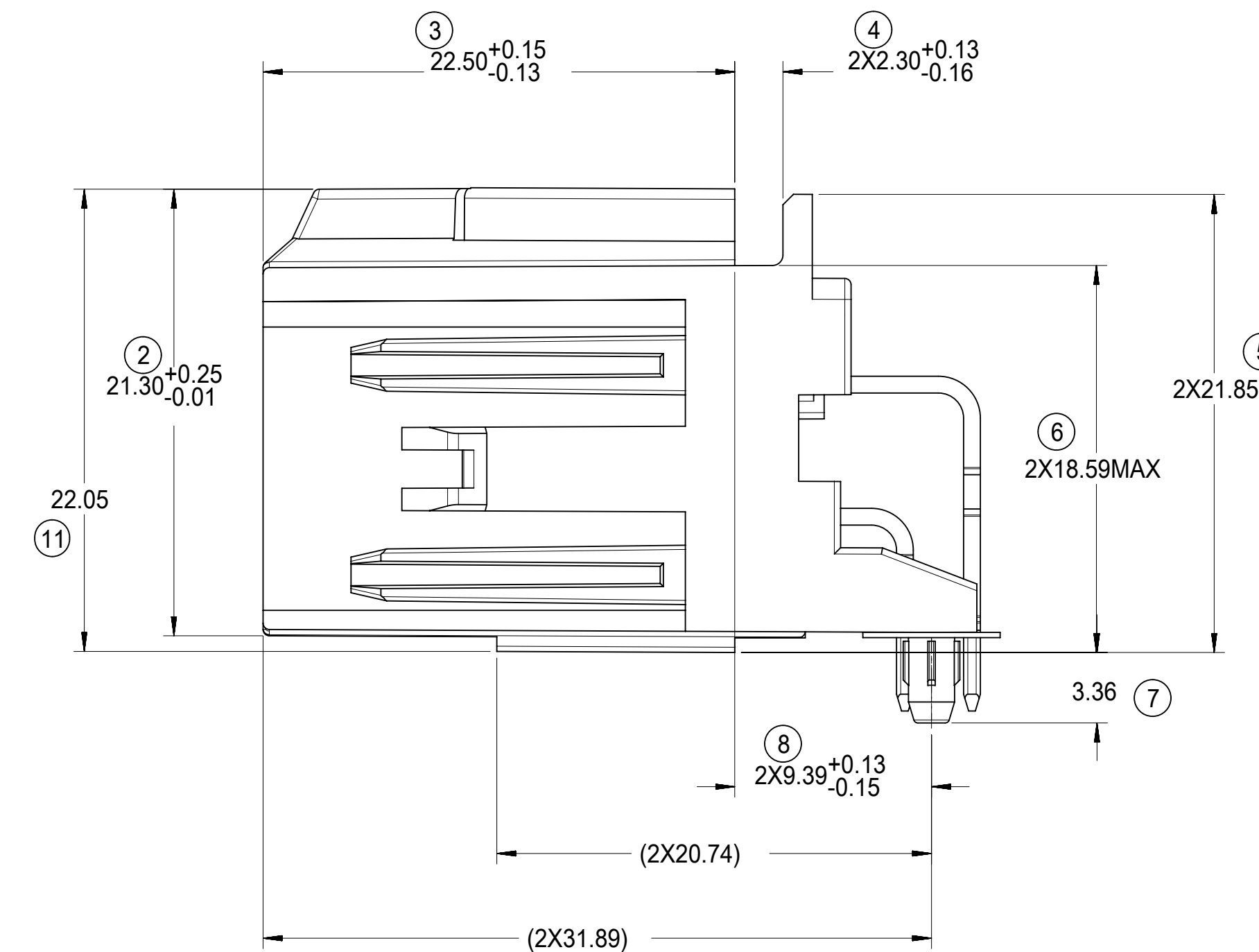
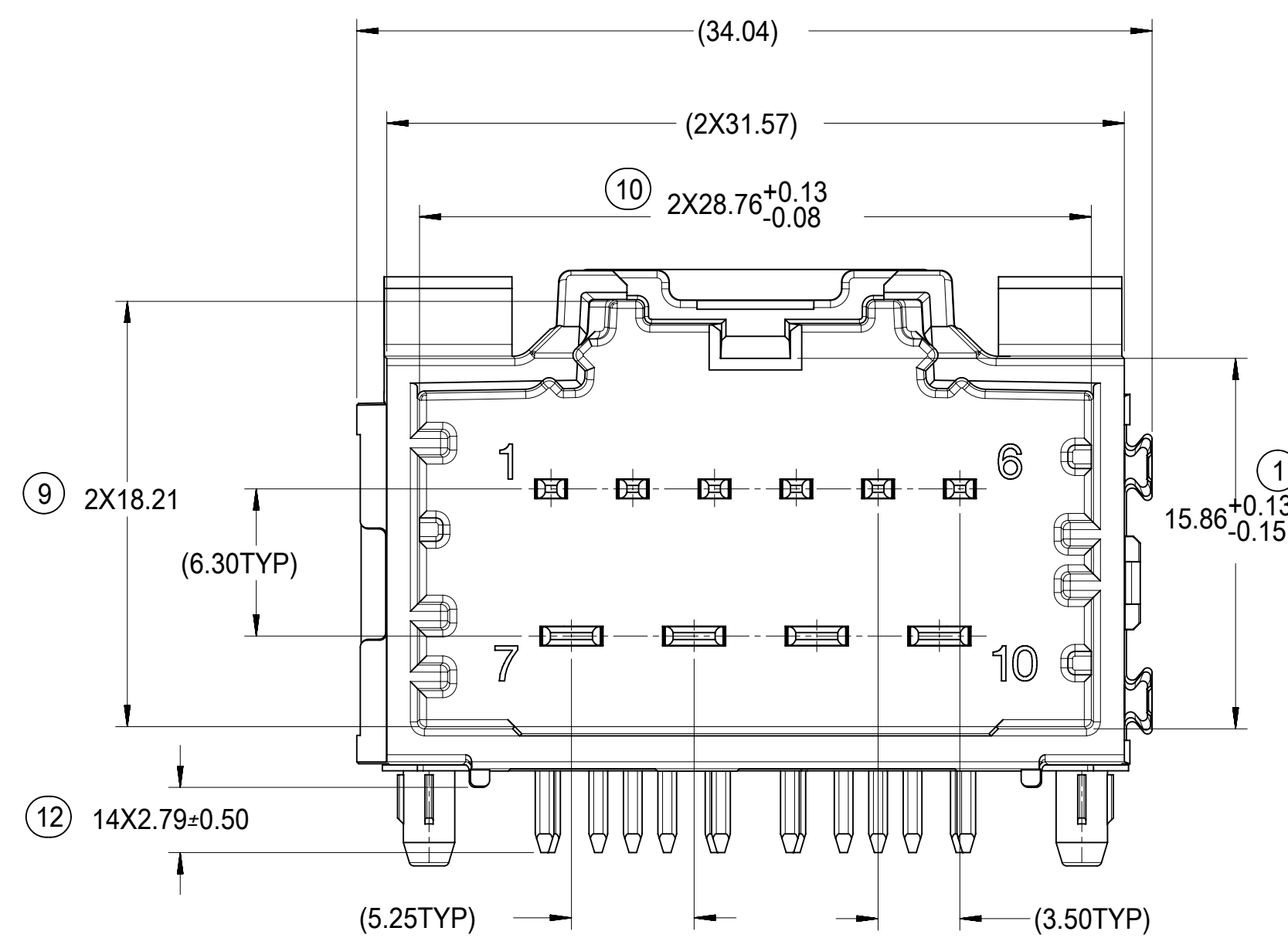


OPTION 'B'

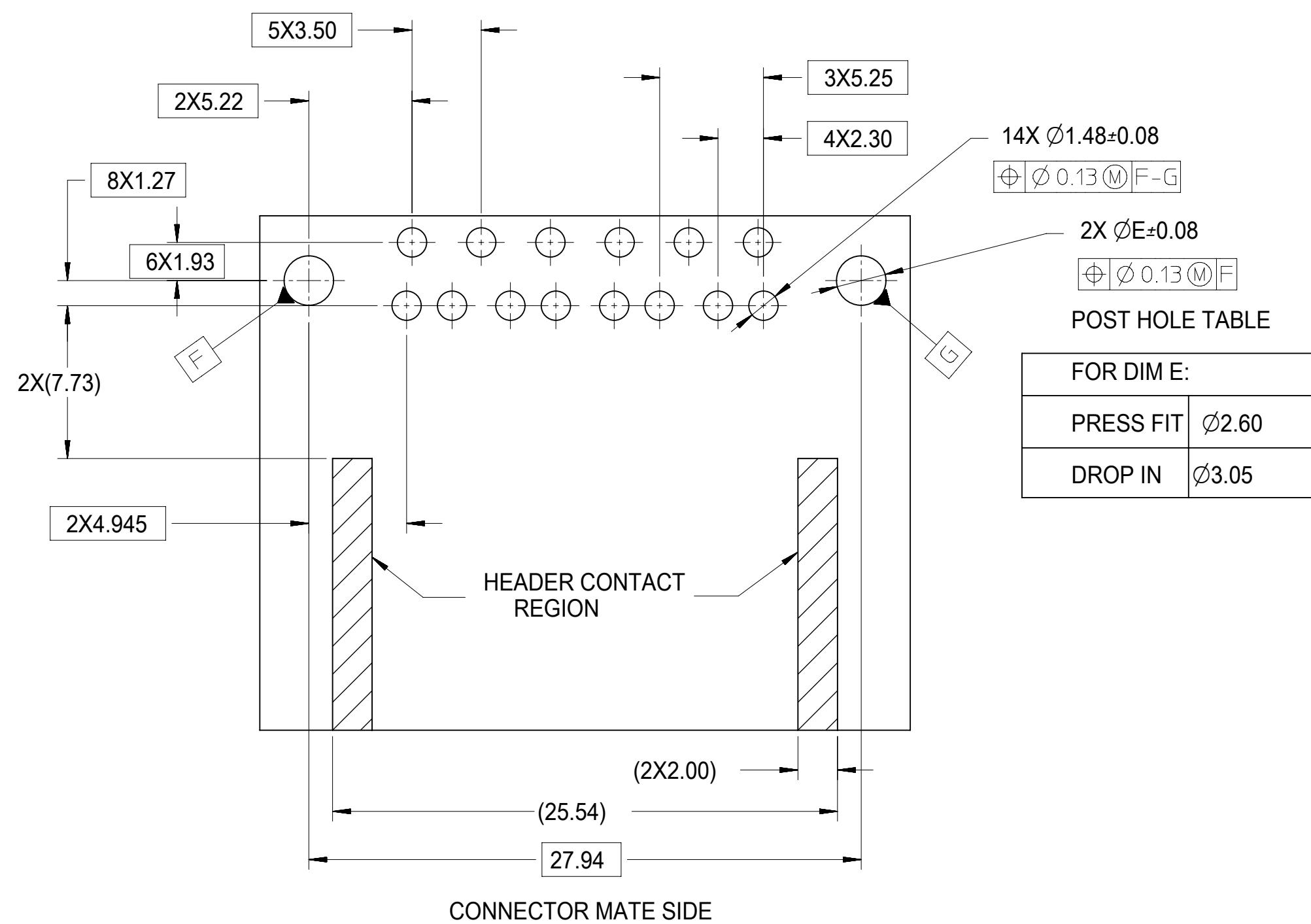


OPTION 'C'

MATERIAL NUMBER			CKT SIZE	DESCRIPTION	POL	COLOR
TUBE PACK	TRAY PACK	ALT TRAY				
34696-9100	34696-0100	34696-9103	10	POWER STAC RIGHT ANGLE HEADER ASSEMBLY (4 x 2.8mm + 6 x 1.5mm)	A	BLACK
34696-9101	34696-0101	34696-9104	10	POWER STAC RIGHT ANGLE HEADER ASSEMBLY (4 x 2.8mm + 6 x 1.5mm)	B	GREY
34696-9102	34696-0102	34696-9105	10	POWER STAC RIGHT ANGLE HEADER ASSEMBLY (4 x 2.8mm + 6 x 1.5mm)	C	BROWN



RECOMMENDED PCB LAYOUT



NOTES: VALID UNLESS OTHERWISE SPECIFIED

- GENERAL:
 - CONNECTOR HEADER MUST BE VALIDATED TO THE FOLLOWING FUNCTIONAL REQUIREMENTS:
 - PIN RETENTION = USCAR-2 REV 4
 - SOLDERABILITY = SMES-152
 - APPLICATION REQUIREMENTS (REFERENCE ONLY) FOR:
 - SEE APPLICATION SPECIFICATION = AS-34729-020
 - SEE PRODUCT SPECIFICATION = PS-31372-100
 - MATES WITH: SD-31372-900
 - PACKAGING SPECIFICATION PER MOLEX DRAWING PK-31300-892 (TRAY)
 - PACKAGING SPECIFICATION PER MOLEX DRAWING PK-31301-063 (TUBE)
 - PACKAGING SPECIFICATION PER MOLEX DRAWING PK-31300-894 (ALT TRAY)
- DESIGN: MATERIALS:
 - SHROUD (PLASTIC HOUSING):
 - RESIN - SPS 30%GF
 - 1.50mm BLADES:
 - BASE MATERIAL: C19400
 - PLATING TYPE: AS NOTED
 - 2.80mm BLADES:
 - BASE MATERIAL: C19400
 - PLATING TYPE: AS NOTED
 - PIN ALIGNMENT PLATE: MYLAR
- PLATING REQUIREMENTS:
 - UNDERPLATING - OVERALL NICKEL
 - OVERPLATING - OVERALL TIN

SYMBOLS	THIS DRAWING CONTAINS INFORMATION THAT IS PROPRIETARY TO MOLEX ELECTRONIC TECHNOLOGIES, LLC AND SHOULD NOT BE USED WITHOUT WRITTEN PERMISSION		CURRENT REV DESC:	
DIMENSION UNITS	SCALE	EC NO:	DRWN:	DATE:
▽ = 0	mm	4:1	171516	2018/01/29
▽ = 0	GENERAL TOLERANCES (UNLESS SPECIFIED)		DRWN: MYOUNG01	2018/01/30
▽ = 0	ANGULAR TOL ± 3.0°		CHK'D: RBAUMAN	2018/01/30
▽ = 0	4 PLACES ±		APPR: RBAUMAN	2018/01/30
▽ = 0	3 PLACES ±		INITIAL REVISION:	
▽ = 0	2 PLACES ± 0.13		DRWN: MBAILEY	2007/09/06
▽ = 0	1 PLACE ± 0.25		APPR: SMARCEAU	2007/09/10
▽ = 0	0 PLACES ±		DRAFT WHERE APPLICABLE MUST REMAIN WITHIN DIMENSIONS	
▽ = 0	THIRD ANGLE PROJECTION	DRAWING	SERIES	MATERIAL NUMBER
▽ = 0		D-SIZE	34696	SEE CHART

molex

STAC64 SINGLE BAY R/A
10 CKT. HEADER ASSEMBLY SALES DRAWING

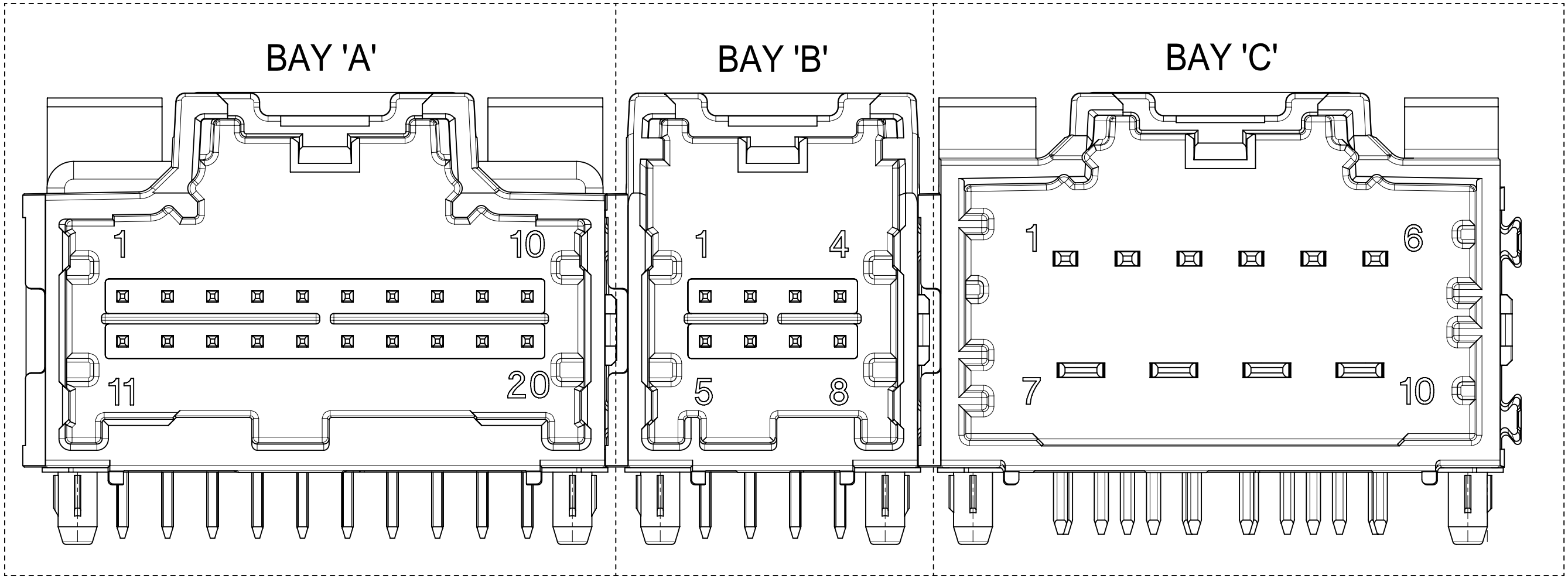
PRODUCT CUSTOMER DRAWING

DOCUMENT NUMBER	DOC TYPE	DOC PART	REVISION
SD-34696-100	PSD	001	K7

MATERIAL NUMBER	CUSTOMER	SHEET NUMBER
SEE CHART	GENERAL MARKET	1 OF 1

TABLE OF CONTENTS	
1	NOTES
2	DIMENSIONAL CHART FOR MULTIBAY CONFIGURATION
3	DIMENSIONAL CHART FOR MULTIBAY CONFIGURATION
4	DIMENSION LAYOUT
5	DIMENSION DETAILS
6	RECOMMENDED SINGLE BAY PCB LAYOUT

3-BAY STAC64 RIGHT ANGLE HEADER ASSEMBLY (P/N: 34708-3040 SHOWN)



NOTES: VALID UNLESS OTHERWISE SPECIFIED
1. GENERAL:

a. CONNECTOR HEADER MUST BE VALIDATED TO THE FOLLOWING FUNCTIONAL REQUIREMENTS:

PRODUCT SPECIFICATION:
8-20 CKT 0.64 PRODUCT SPEC: PS-34729-020/PS-31408-100
10 CKT HYBRID PRODUCT SPEC: PS-31372-100
14 CKT HYBRID PRODUCT SPEC: PS-34969-100

b. APPLICATION REQUIREMENTS (REFERENCE ONLY):

APPLICATION SPECIFICATION:
SINGLE BAY:
8-20 CKT 0.64: AS-34729-020 AND AS-31408-100
10 CKT HYBRID: AS-31372-100
MULTI BAY: AS-34690-000

c. PACKAGING SPECIFICATION PER MOLEX DRAWING PK-31300-892 (TRAY)
d. PACKAGING SPECIFICATION PER MOLEX DRAWING PK-31301-063 (TUBE)

2. DESIGN: MATERIALS:

a. SHROUD (PLASTIC HOUSING):
RESIN - SPS 30%GF
COLOR:
POL A - BLACK
POL B - GRAY
POL C - BROWN
POL D - GREEN

b. 0.64mm PINS:
BASE MATERIAL: C26000
PLATING TYPE: AS NOTED

1.50/2.80mm BLADES:
BASE MATERIAL: C19400
PLATING TYPE: AS NOTED

3. PLATING REQUIREMENTS:

a. UNDERPLATING - OVERALL NICKEL

b. OVERPLATING - OVERALL TIN

4. FOR DESCRIPTION OF INDIVIDUAL BAYS, REFER TO THE FOLLOWING
SINGLE BAY DRAWINGS:
8-20 CKT 0.64: SD-34691-100
10 CKT HYBRID: SD-34696-100
14 CKT HYBRID: SD-34773-010

V2	ADDED NEW P/N 347088020 FOR TUBE PKG IN SHEET 2	CO-000002204	2023.01	RGV
V1	ADDED NEW P/N 347083100 IN SHEET 3	CO-000000837	2022.05	CZHANG118
V	1. UPDATED NOTES 1a and 1b IN SHEET 1 2. P/N 34708-3000 BAY C CKT WAS 12 IN SHEET 2 3. P/N 34708-3001 BAY C POL WAS A IN SHEET 2 4. P/N 34708-3001 DIM 'A' WAS 89.86 IN SHEET 2 5. P/N 34708-3003 BAY C POL WAS C IN SHEET 2 6. UPDATED TEMPLATES	639891	2020.06	CZHANG118
REV.	REV DESCRIPTION	EC#	DATE	NAME

INSPECTION BALLOON NUMBER LOG	
PER DRAWING REVISION: V2	
LAST BALLOON NUMBER USED: 60	
ADDED BALLOON NUMBERS:	
REMOVED BALLOON NUMBERS:	


#####		THIS DRAWING CONTAINS INFORMATION THAT IS PROPRIETARY TO MOLEX ELECTRONIC TECHNOLOGIES, LLC AND SHOULD NOT BE USED WITHOUT WRITTEN PERMISSION	
DIMENSION UNITS	SCALE	CURRENT REV DESC: SEE REVISION CHART	
FA = 0	mm 4:1	<div style="text-align: center; font-size: 24pt; font-weight: bold;">molex</div> <p>3-BAY STAC64 RIGHT ANGLE HEADER ASSEMBLY SALES DRAWING</p> <p>PRODUCT SALES DRAWING</p>	
FC = 0	GENERAL TOLERANCES (UNLESS SPECIFIED)		
FD = 0	ANGULAR TOL ± 1°		
	4 PLACES ± 0		
	3 PLACES ± 0		
	2 PLACES ± 0.13		
	1 PLACE ± 0.25	EC NO:	
	0 PLACES ± 0	DRWN: Raghu GV	26-Dec-2022
		CHK'D: Kelly TANG	13-Jan-2023
		APPR: Ringo Hu	13-Jan-2023
		INITIAL REVISION:	
		DRWN: Cindy Zhang	07-Apr-2022
		APPR: Colin Zhang	09-May-2022
		THIRD ANGLE PROJECTION	
		DRAWING	SERIES
		D-SIZE	34708
		MATERIAL NUMBER	CUSTOMER
		SD-34708-300	GENERAL MARKET
		DOCUMENT NUMBER	DOC TYPE DOC PART REVISION
			PSD 001 V2
		SHEET NUMBER	
			1 OF 6

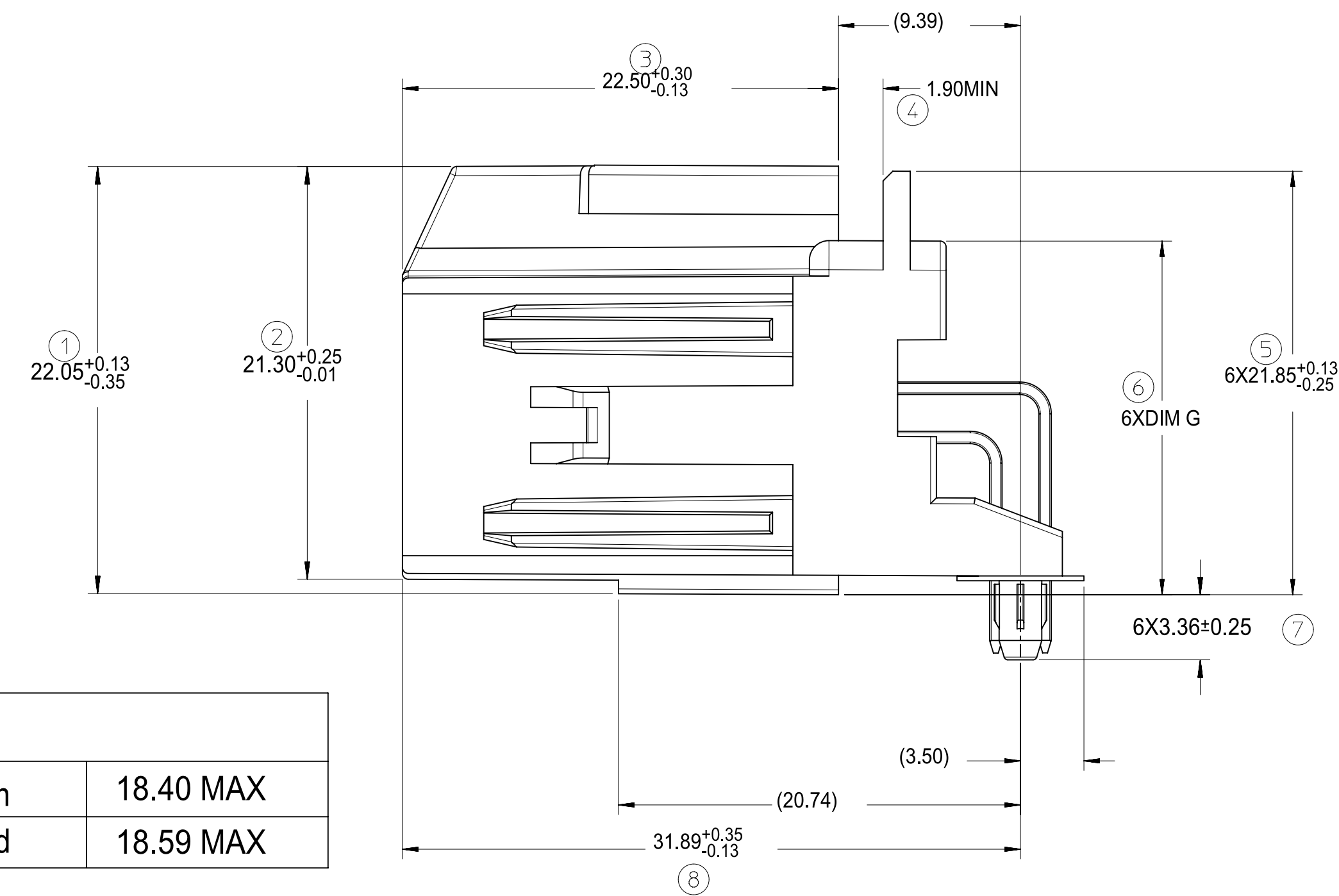
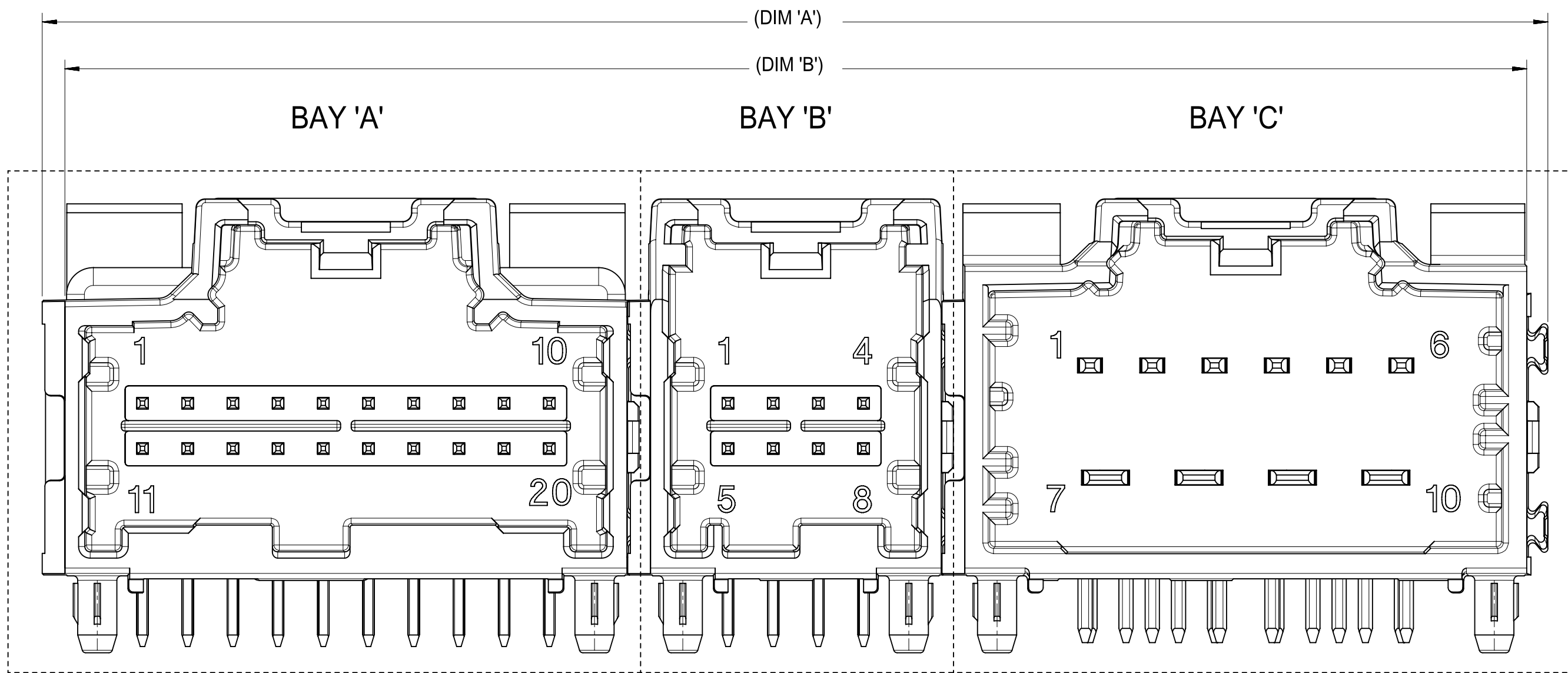
DOCUMENT STATUS	Production	RELEASE DATE	13-Jan-2023
-----------------	------------	--------------	-------------

DIMENSIONAL CHART FOR MULTIBAY CONFIGURATION:

3 BAY PART NUMBER (TUBE PKG)	3 BAY PART NUMBER (TRAY PKG)	BAY A			BAY B			BAY C			DIM 'A'	DIM 'B'	DIM 'C'	DIM 'D'	DIM 'E'
		CKT	TYPE	POL	CKT	TYPE	POL	CKT	TYPE	POL					
	34708-3000	16	0.64mm	B	16	0.64mm	A	8	0.64mm	B	79.52	77.05	22.86	22.86	17.78
	34708-3001	20	0.64mm	A	20	0.64mm	B	12	0.64mm	C	89.68	87.21	27.94	27.94	17.78
	34708-3002	20	0.64mm	A	20	0.64mm	B	14	HYBRID	C	99.84	97.37	27.94	27.94	27.94
	34708-3003	10	HYBRID	A	16	0.64mm	A	8	0.64mm	A	79.52	77.05	27.94	22.86	12.70
	34708-3004	16	0.64mm	A	16	0.64mm	B	16	0.64mm	C	84.60	82.13	22.86	22.86	22.86
	34708-3006	20	0.64mm	D	20	0.64mm	B	20	0.64mm	C	99.84	97.37	27.94	27.94	27.94
TBD	34708-3007	20	0.64mm	A	12	0.64mm	A	20	0.64mm	D	89.68	87.21	27.94	17.78	27.94
TBD	34708-3008	20	0.64mm	A	10	HYBRID	B	10	HYBRID	A	99.84	97.37	27.94	27.94	27.94
34708-8010	34708-3010	20	0.64mm	A	20	0.64mm	B	16	0.64mm	A	94.76	92.29	27.94	27.94	22.86
34708-8020	34708-3020	10	HYBRID	A	20	0.64mm	B	20	0.64mm	C	99.84	97.37	27.94	27.94	27.94
TBD	34708-3021	10	HYBRID	A	20	0.64mm	C	20	0.64mm	D	99.84	97.37	27.94	27.94	27.94
TBD	34708-3022	20	0.64mm	B	16	0.64mm	C	10	HYBRID	A	94.76	92.29	27.94	22.86	27.94
TBD	34708-3030	16	0.64mm	A	12	0.64mm	A	10	HYBRID	A	84.60	82.13	22.86	17.78	27.94
TBD	34708-3040	20	0.64mm	A	8	0.64mm	A	10	HYBRID	A	84.60	82.13	27.94	12.70	27.94
TBD	34708-3050	10	HYBRID	A	16	0.64mm	B	16	0.64mm	C	89.68	87.21	27.94	22.86	22.86
TBD	34708-3060	16	0.64mm	A	20	0.64mm	C	20	0.64mm	D	94.76	92.29	22.86	27.94	27.94
34708-8070	34708-3070	20	0.64mm	A	20	0.64mm	B	10	HYBRID	A	99.84	97.37	27.94	27.94	27.94
TBD	34708-3071	20	0.64mm	A	10	HYBRID	A	10	HYBRID	B	99.84	97.37	27.94	27.94	27.94
TBD	34708-3080	12	0.64mm	A	12	0.64mm	B	16	0.64mm	A	74.44	71.97	17.78	17.78	22.86
TBD	34708-3081	20	0.64mm	D	12	0.64mm	B	20	0.64mm	C	89.68	87.21	27.94	17.78	27.94
TBD	34708-3082	12	0.64mm	C	8	0.64mm	A	8	0.64mm	B	59.20	56.73	17.78	12.70	12.70
TBD	34708-3083	8	0.64mm	C	16	0.64mm	B	16	0.64mm	C	74.44	71.97	12.70	22.86	22.86
TBD	34708-3084	16	0.64mm	A	8	0.64mm	A	8	0.64mm	B	64.28	61.81	22.86	12.70	12.70
TBD	34708-3085	20	0.64mm	A	20	0.64mm	B	20	0.64mm	C	99.84	97.37	27.94	27.94	27.94
TBD	34708-3086	20	0.64mm	A	20	0.64mm	B	8	0.64mm	A	84.60	82.13	27.94	27.94	12.70
TBD	34708-3087	20	0.64mm	A	16	0.64mm	A	8	0.64mm	A	79.52	77.05	27.94	22.86	12.70
TBD	34708-3088	12	0.64mm	A	16	0.64mm	A	12	0.64mm	B	74.44	71.97	17.78	22.86	17.78
TBD	34708-3089	16	0.64mm	A	16	0.64mm	B	20	0.64mm	A	89.68	87.21	22.86	22.86	27.94
TBD	34708-3090	16	0.64mm	C	16	0.64mm	A	8	0.64mm	B	74.44	71.97	22.86	22.86	12.70
TBD	34708-3091	20	0.64mm	C	12	0.64mm	C	16	0.64mm	B	84.60	82.13	27.94	17.78	22.86
TBD	34708-3092	12	0.64mm	B	8	0.64mm	C	20	0.64mm	D	74.44	71.97	17.78	12.70	27.94
TBD	34708-3093	16	0.64mm	B	16	0.64mm	A	8	0.64mm	A	74.44	71.97	22.86	22.86	12.70
TBD	34708-3094	20	0.64mm	D	20	0.64mm	B	8	0.64mm	A	84.60	82.13	27.94	27.94	12.70
TBD	34708-3095	20	0.64mm	A	16	0.64mm	C	12	0.64mm	B	84.60	82.13	27.94	22.86	17.78
TBD	34708-3096	16	0.64mm	A	16	0.64mm	B	20	0.64mm	C	89.68	87.21	22.86	22.86	27.94
TBD	34708-3097	16	0.64mm	C	12	0.64mm	B	20	0.64mm	A	84.60	82.13	22.86	17.78	27.94
TBD	34708-3098	20	0.64mm	B	20	0.64mm	C	20	0.64mm	D	99.84	97.37	27.94	27.94	27.94

V2

#####		THIS DRAWING CONTAINS INFORMATION THAT IS PROPRIETARY TO MOLEX ELECTRONIC TECHNOLOGIES, LLC AND SHOULD NOT BE USED WITHOUT WRITTEN PERMISSION		CURRENT REV DESC: SEE REVISION CHART		
FA = 0	mm	SCALE	1:1	 3-BAY STAC64 RIGHT ANGLE HEADER ASSEMBLY SALES DRAWING PRODUCT SALES DRAWING		
FC = 0	GENERAL TOLERANCES (UNLESS SPECIFIED)		EC NO: DRWN: Raghu GV 26-Dec-2022 CHK'D: Kelly TANG 13-Jan-2023 APPR: Ringo Hu 13-Jan-2023			
FD = 0	ANGULAR TOL ± 1°		INITIAL REVISION: DRWN: Cindy Zhang 07-Apr-2022 APPR: Colin Zhang 09-May-2022			
DIVISIONAL SYMBOLS		4 PLACES ± 0	3 PLACES ± 0			2 PLACES ± 0.13
DRAFT WHERE APPLICABLE MUST REMAIN WITHIN DIMENSIONS		0 PLACES ± 0	THIRD ANGLE PROJECTION		DRAWING SERIES D-SIZE 34708	
DOCUMENT STATUS		Production	RELEASE DATE	13-Jan-2023	DOCUMENT NUMBER SD-34708-300	
					DOC TYPE DOC PART REVISION PSD 001 V2	
					MATERIAL NUMBER CUSTOMER SHEET NUMBER GENERAL MARKET 2 OF 6	

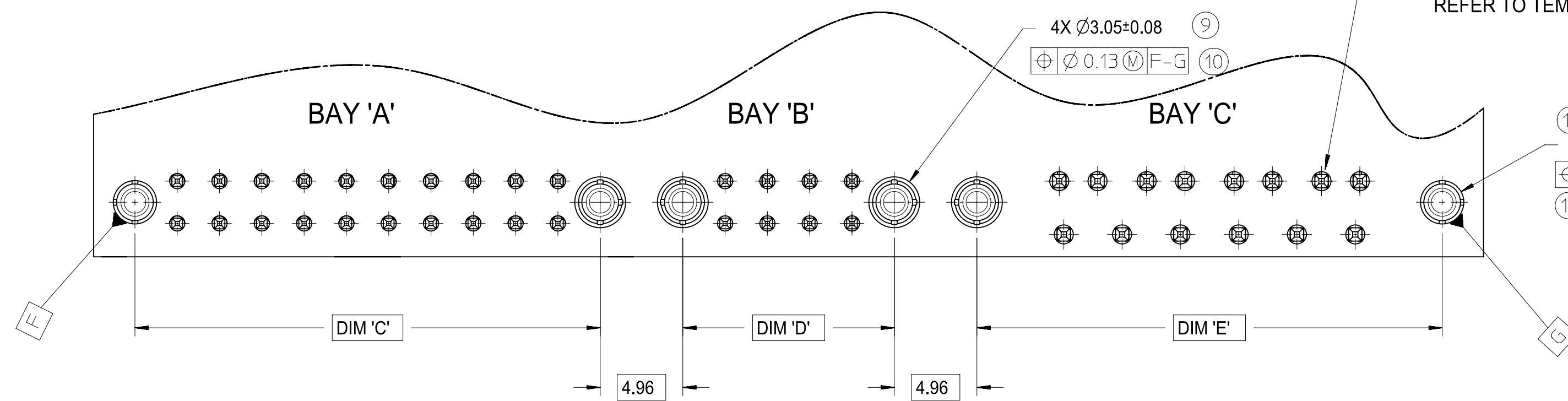


FOR DIM G:	
8-20CKT 0.64mm	18.40 MAX
10/14CKT Hybrid	18.59 MAX

RECOMMENDED PCB LAYOUT

INSERT NECESSARY BAYS USING CHART ON SHEET 2 OR 3

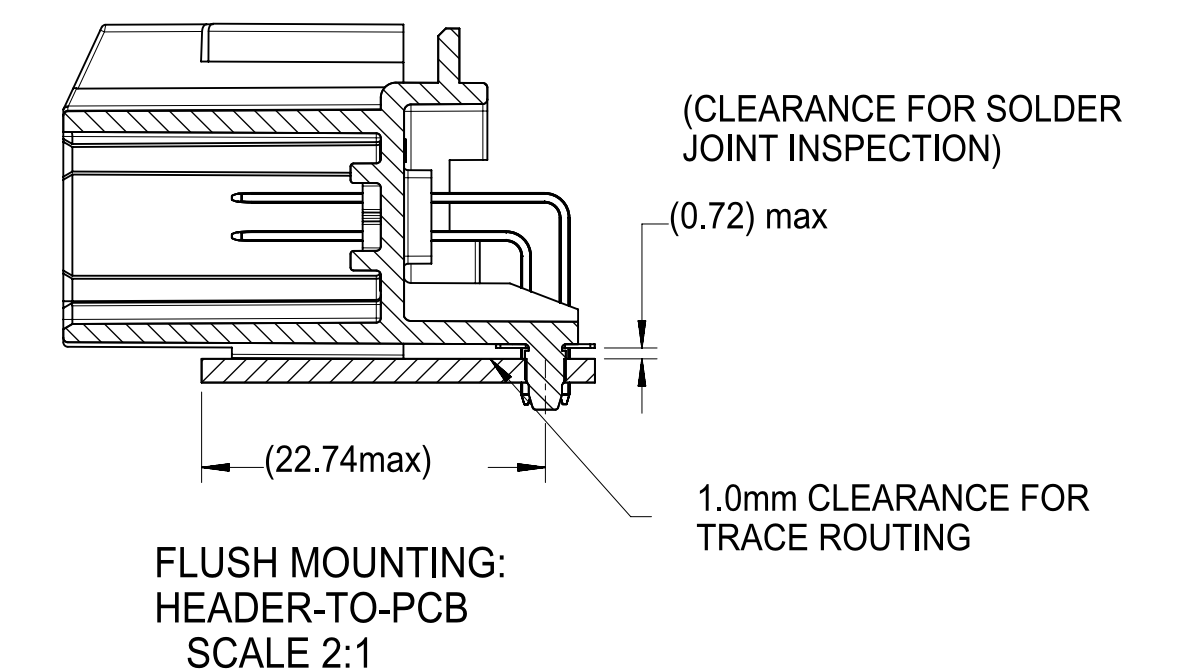
FOR PIN LOCATION, REFER TO TEMPLATES ON SHEET 5



POST HOLE TABLE:

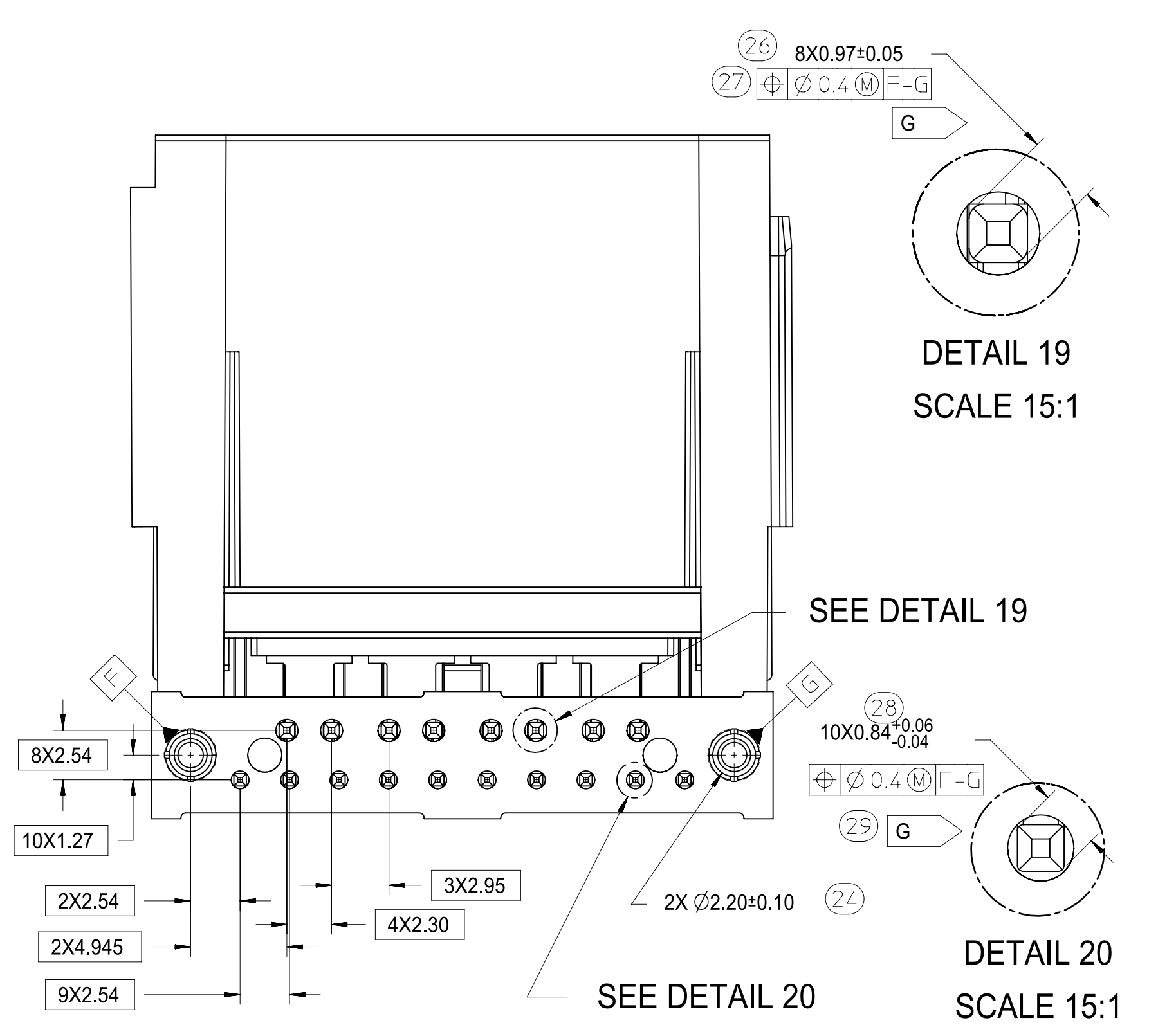
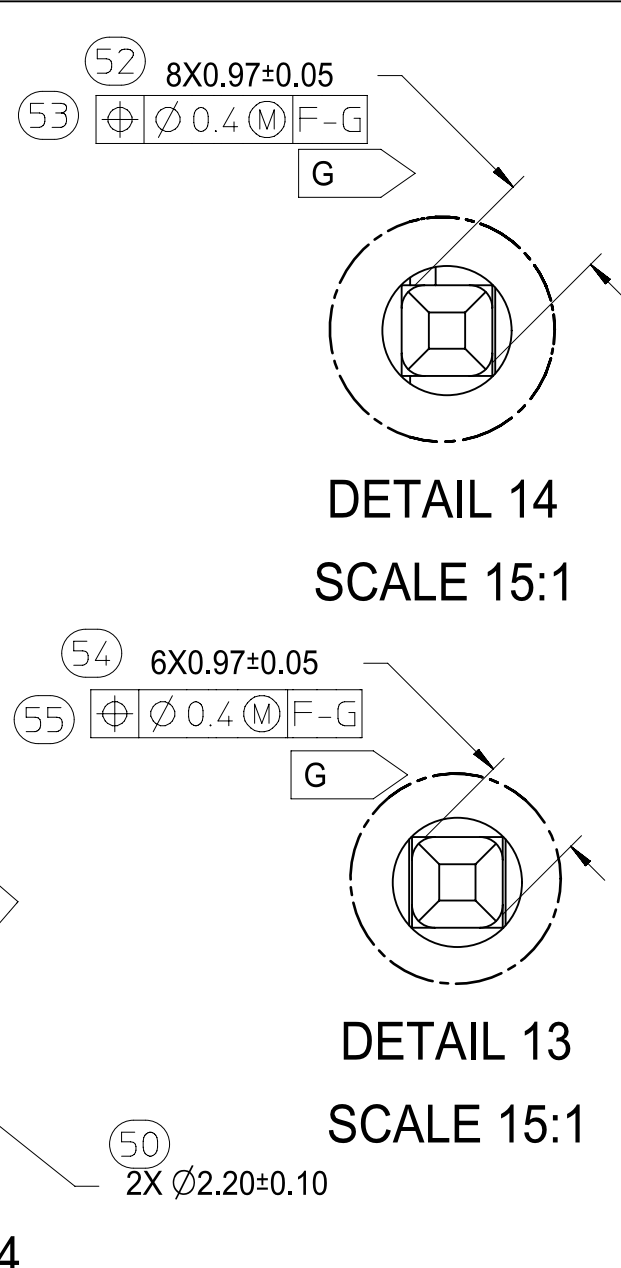
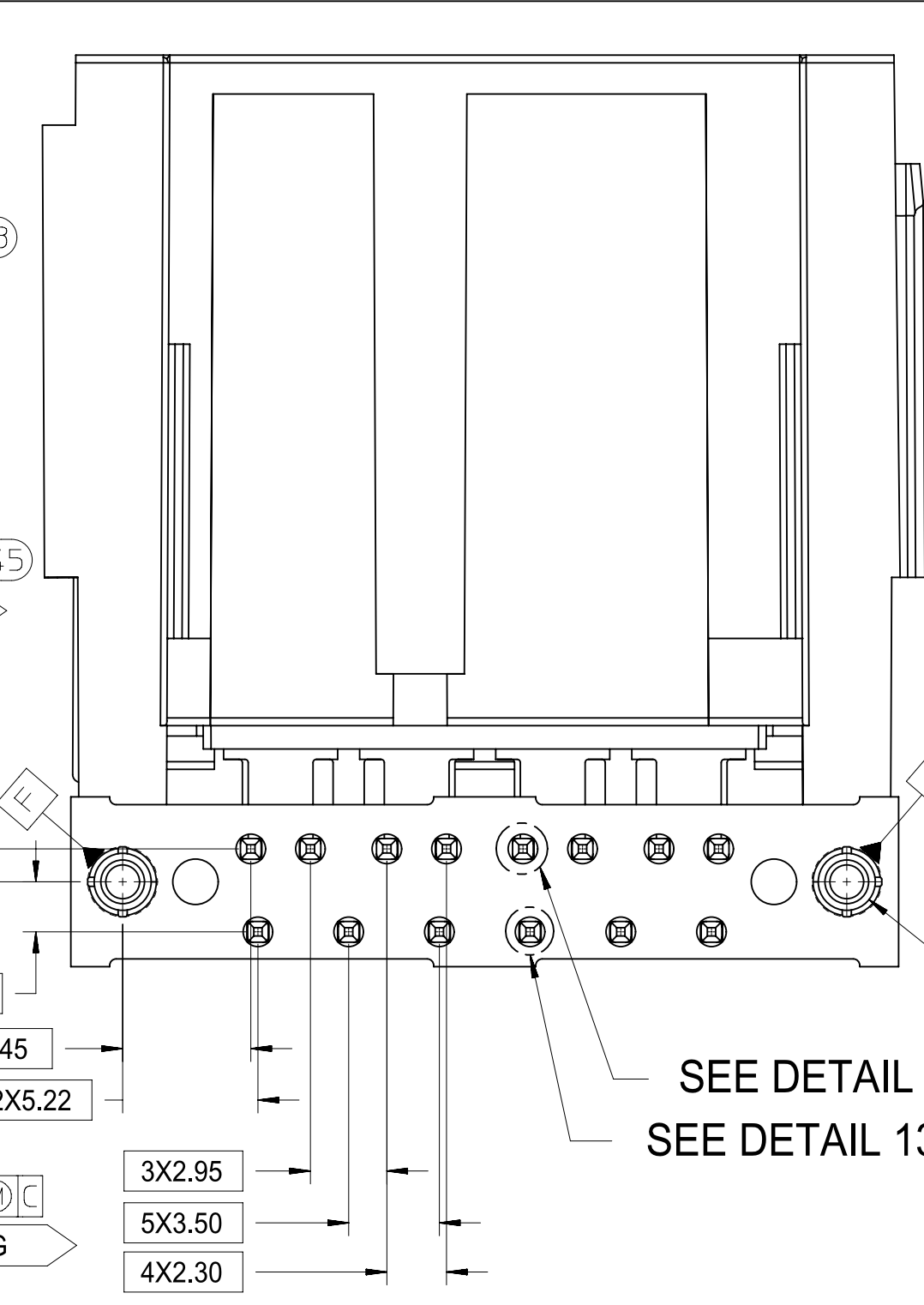
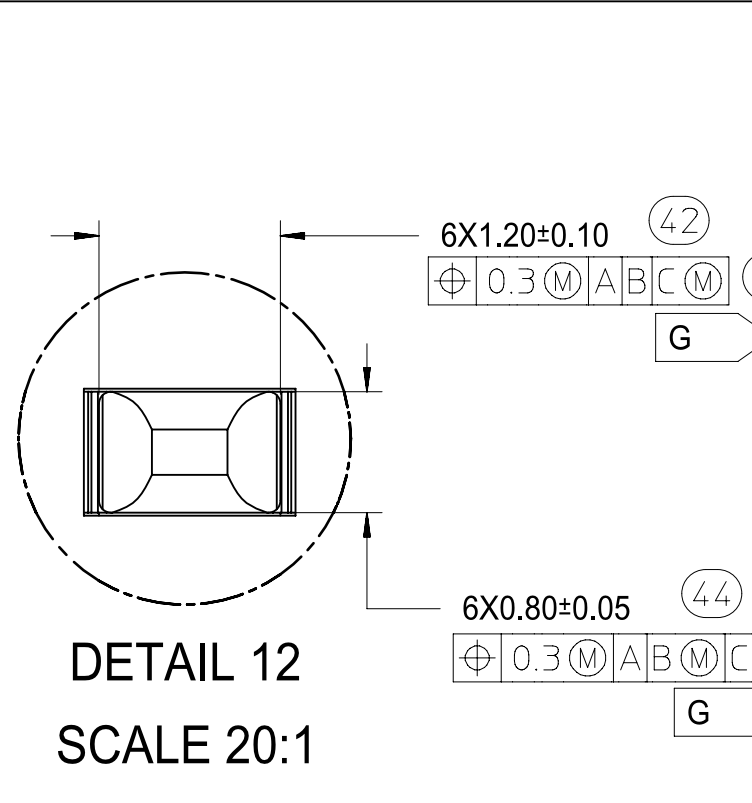
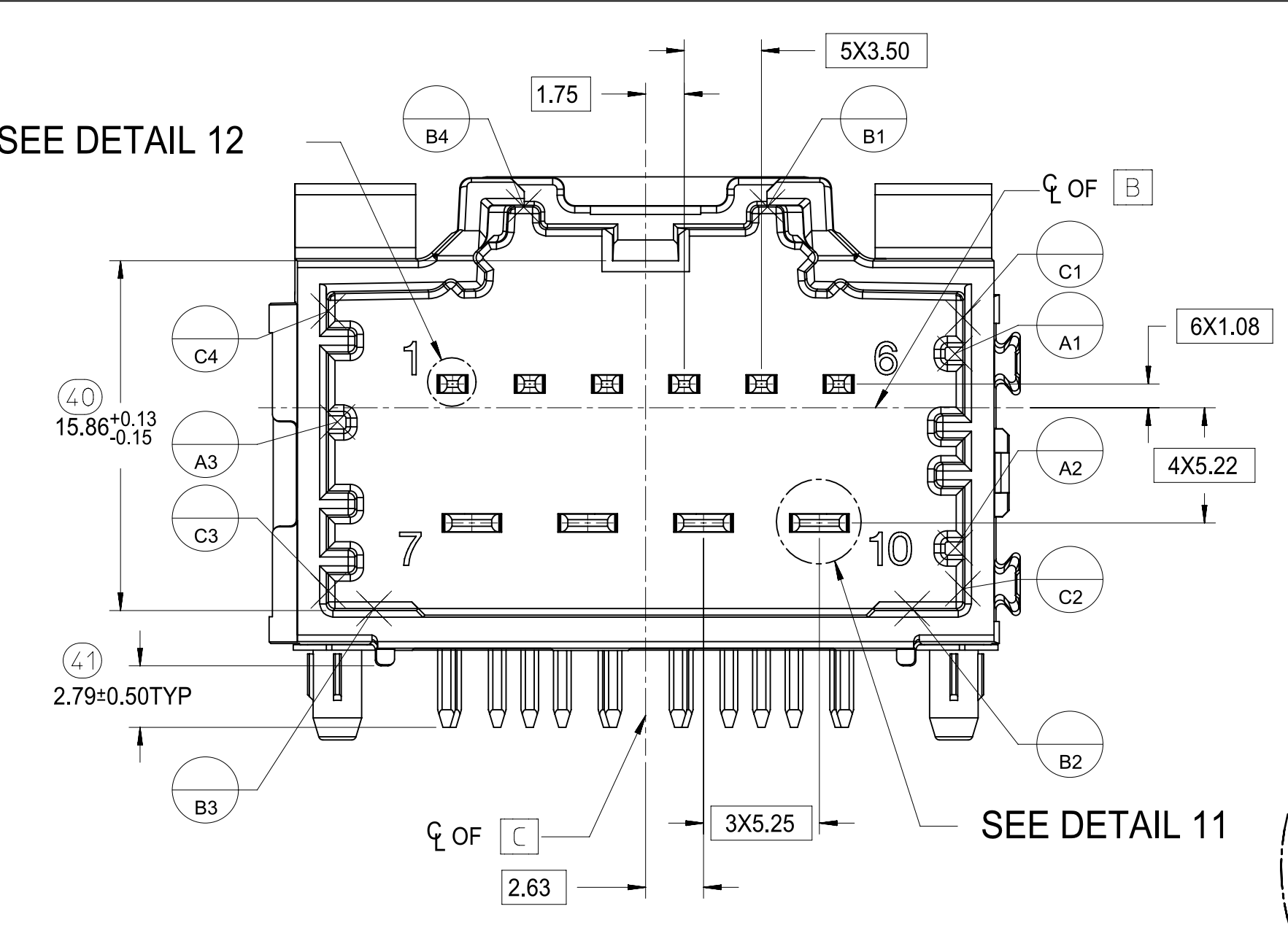
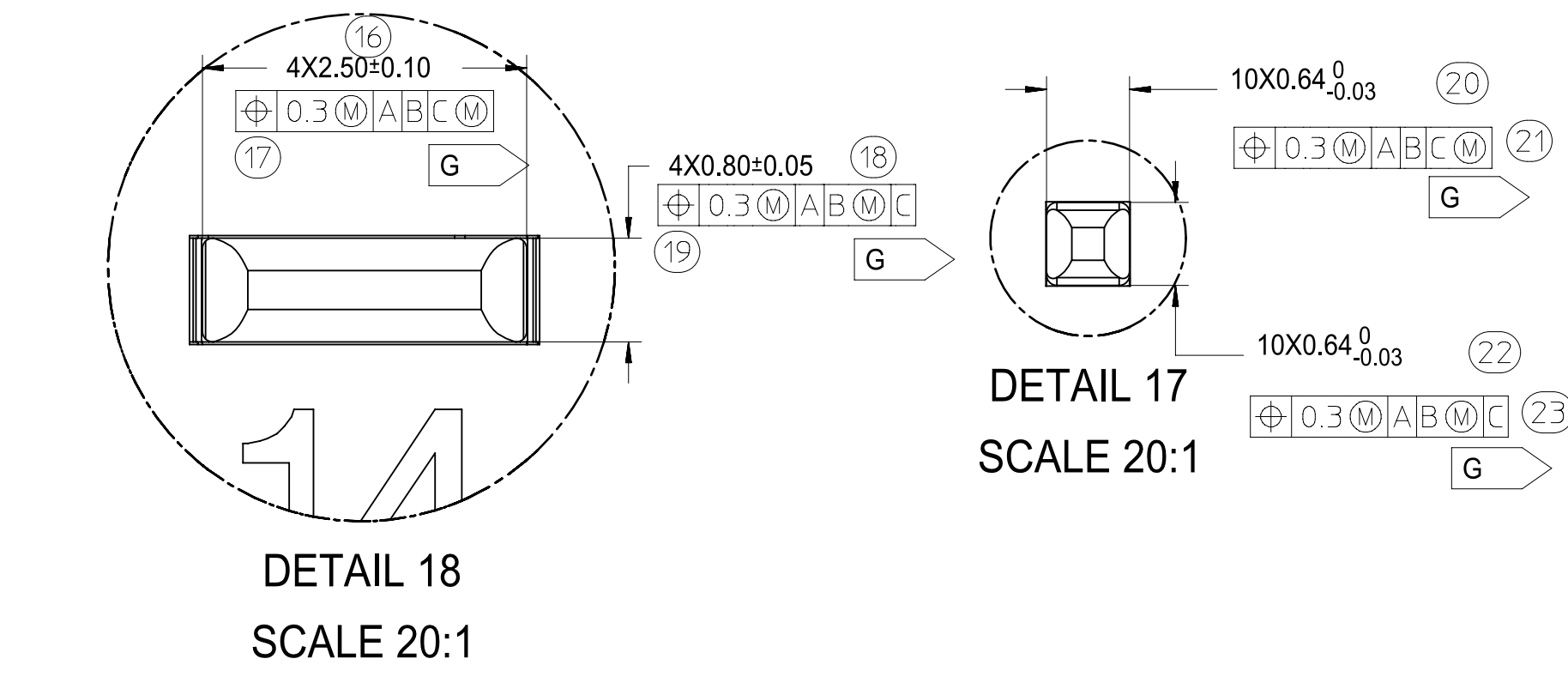
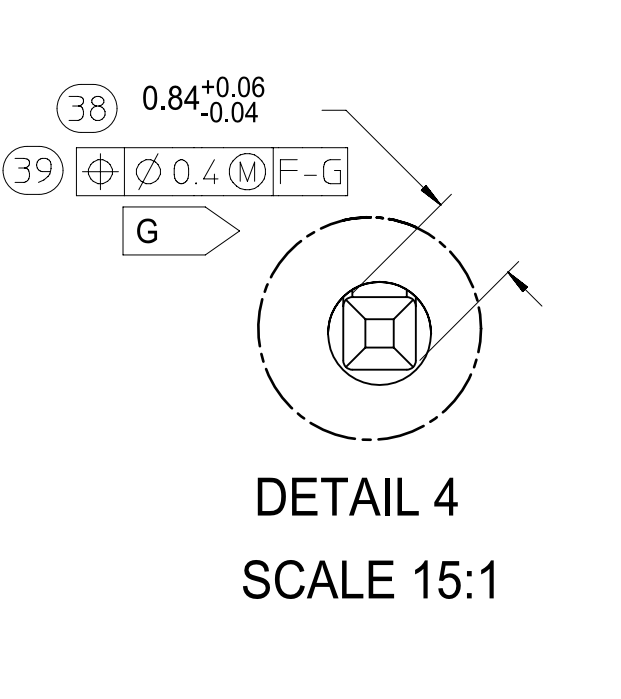
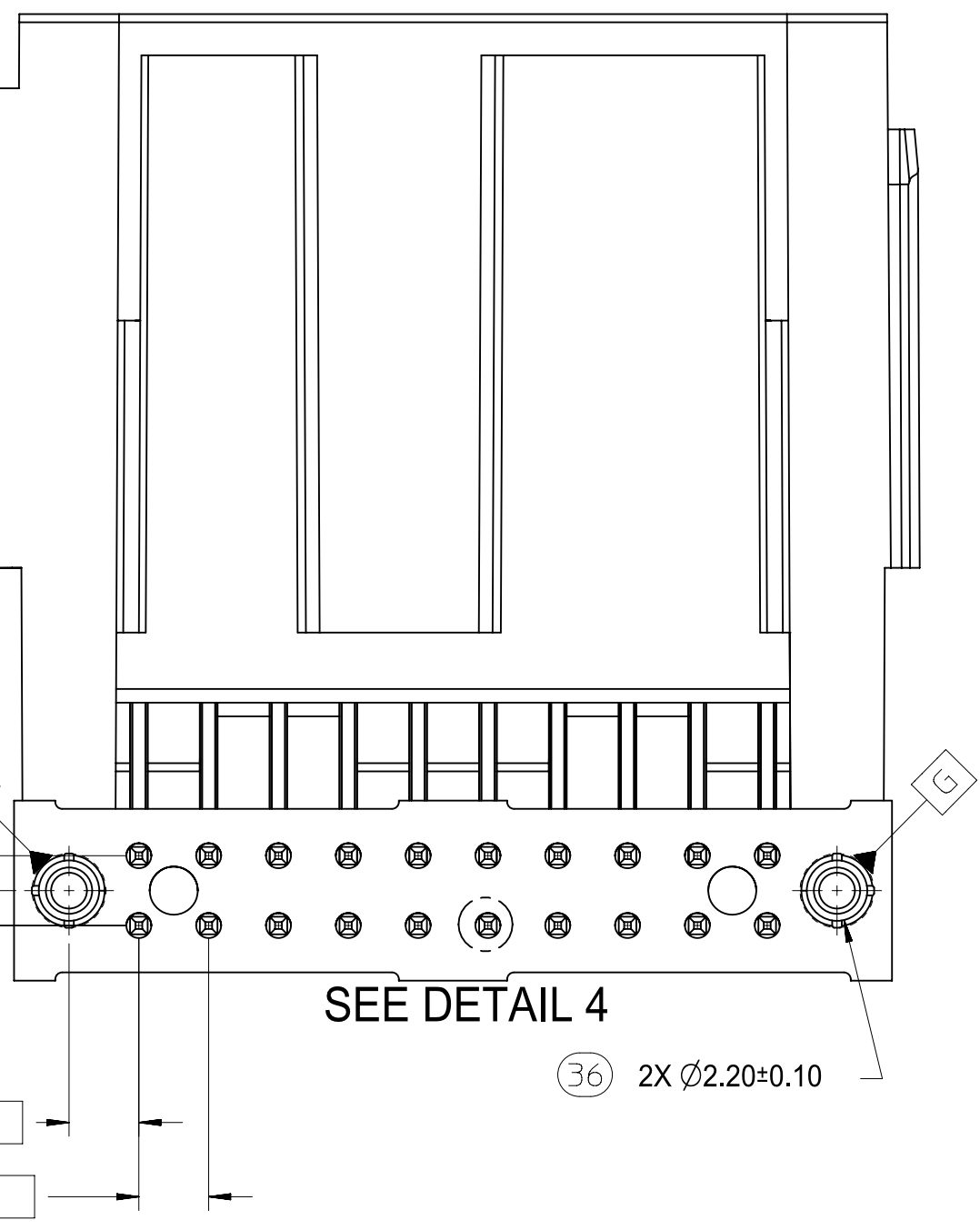
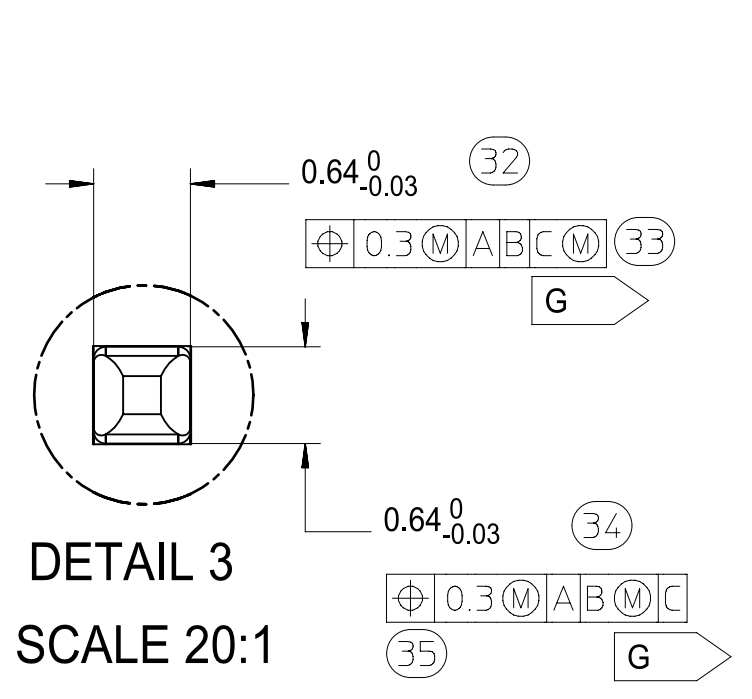
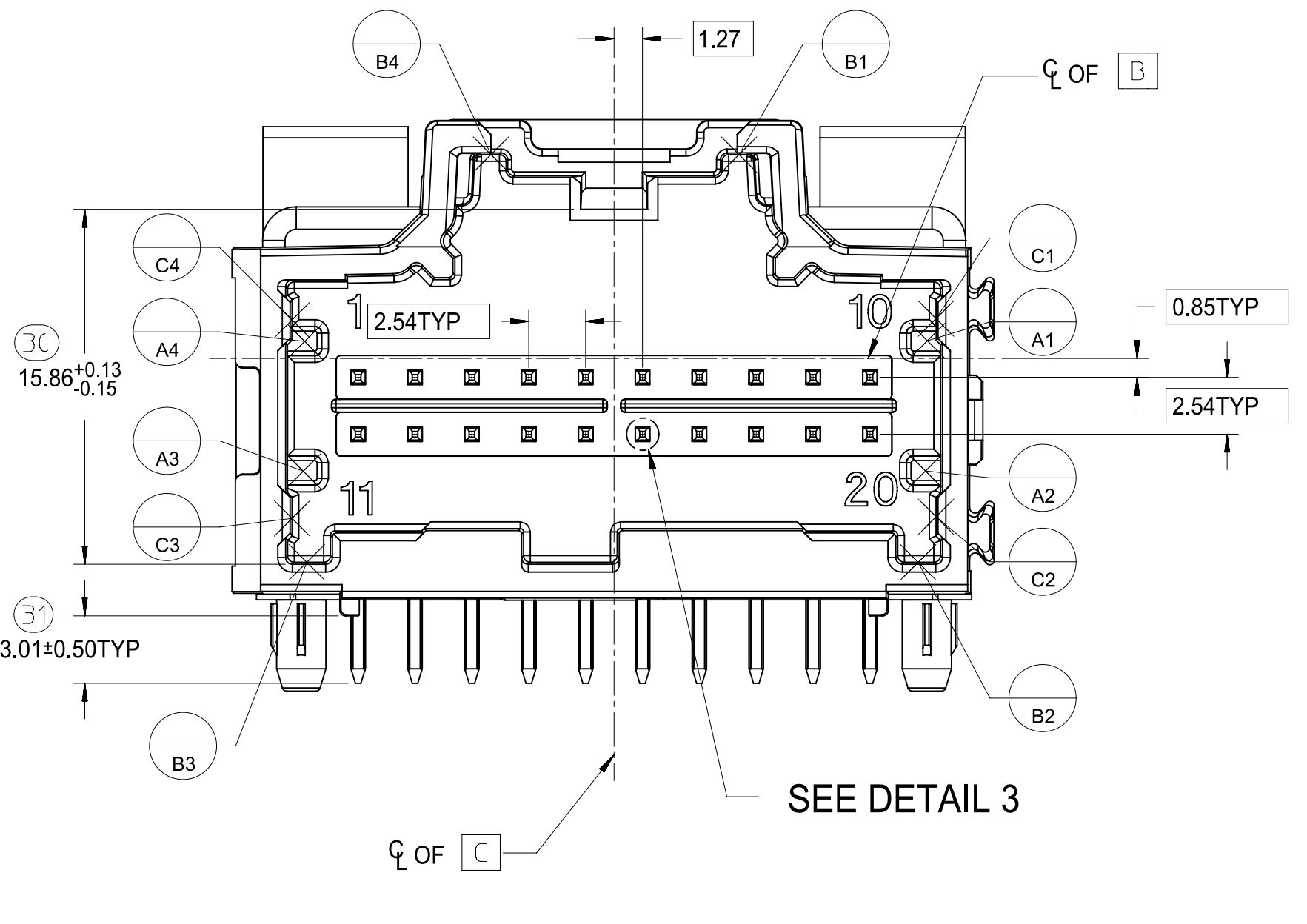
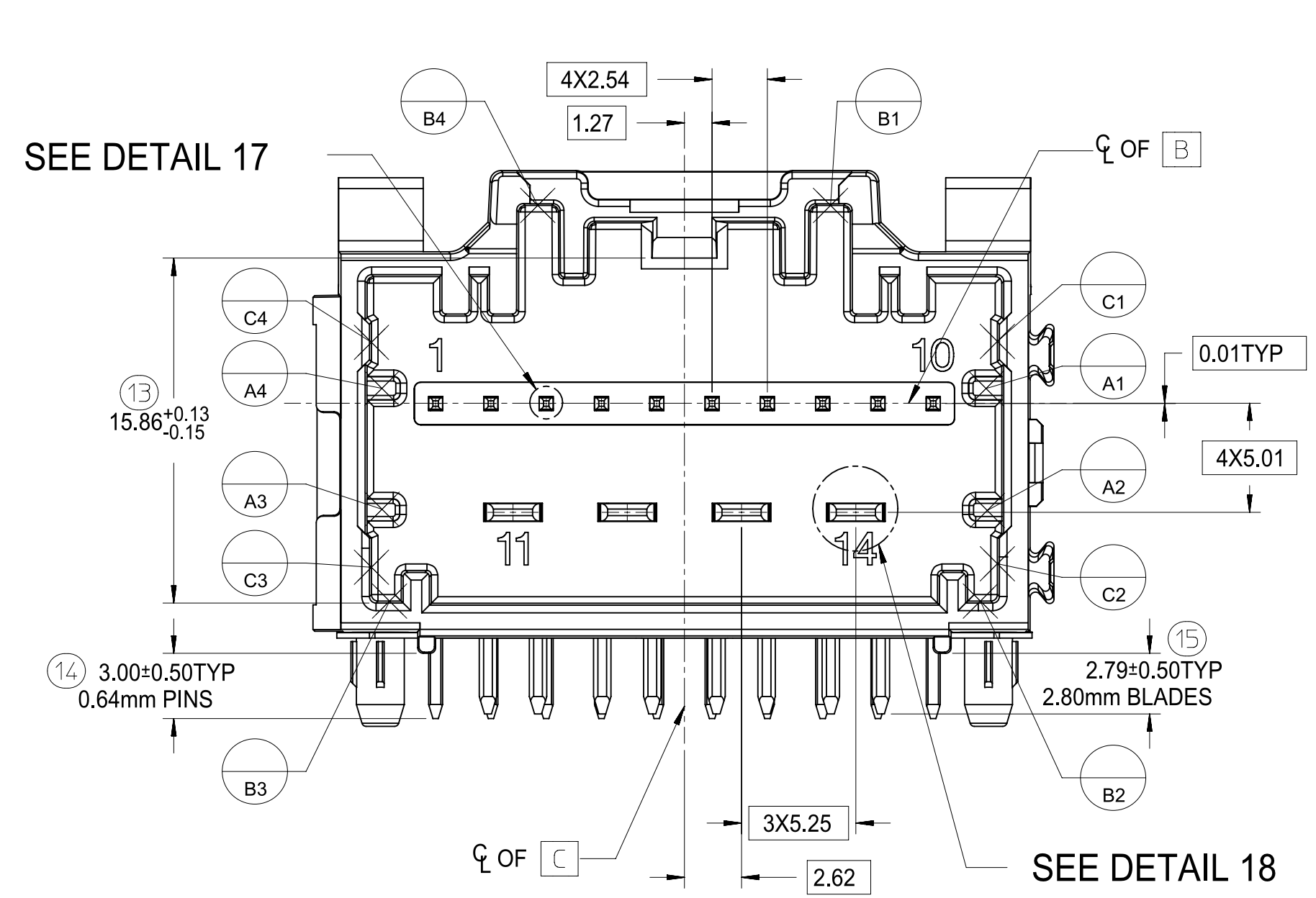
FOR DIM Z:	
PRESS FIT:	2.60
DROP IN:	3.05

ALL CIRCUIT SIZES



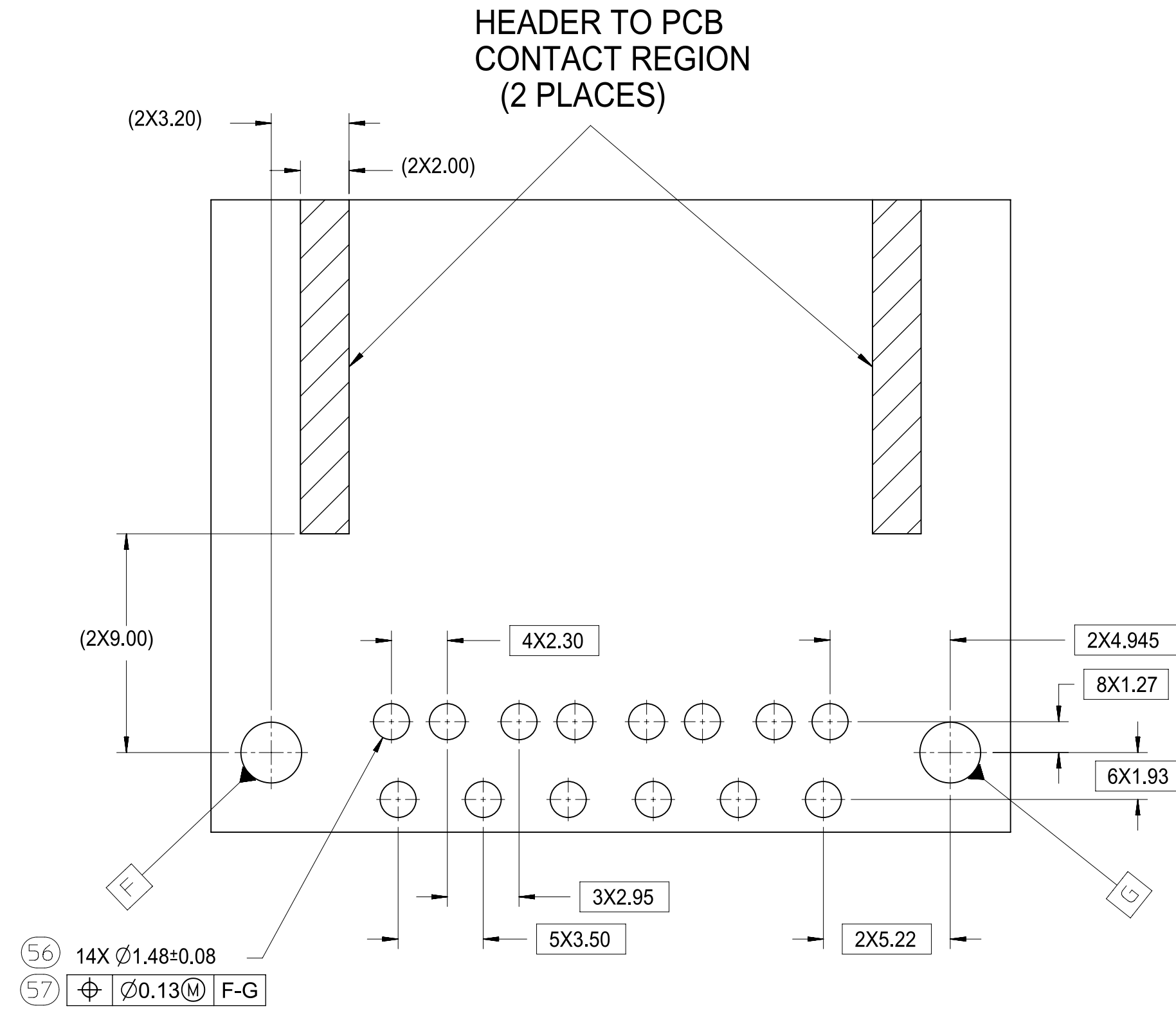
THIS DRAWING CONTAINS INFORMATION THAT IS PROPRIETARY TO MOLEX ELECTRONIC TECHNOLOGIES, LLC AND SHOULD NOT BE USED WITHOUT WRITTEN PERMISSION											
DIMENSION UNITS: mm		SCALE: 4:1		CURRENT REV DESC: SEE REVISION CHART							
GENERAL TOLERANCES (UNLESS SPECIFIED)				molex 3-BAY STAC64 RIGHT ANGLE HEADER ASSEMBLY SALES DRAWING PRODUCT SALES DRAWING							
ANGULAR TOL ± 1°											
4 PLACES ± 0											
3 PLACES ± 0											
2 PLACES ± 0.13											
1 PLACE ± 0.25				EC NO: DRWN: Raghu GV 26-Dec-2022 CHK'D: Kelly TANG 13-Jan-2023 APPR: Ringo Hu 13-Jan-2023				DOCUMENT NUMBER: SD-34708-300 DOC TYPE: PSD DOC PART: 001 REVISION: V2			
0 PLACES ± 0				INITIAL REVISION: DRWN: Cindy Zhang 07-Apr-2022 APPR: Colin Zhang 09-May-2022				MATERIAL NUMBER: 34708 CUSTOMER: GENERAL MARKET SHEET NUMBER: 4 OF 6			
DRAFT WHERE APPLICABLE MUST REMAIN WITHIN DIMENSIONS				THIRD ANGLE PROJECTION		DRAWING: D-SIZE		SERIES: 34708			

8-20 CKT 0.64mm HEADER DETAILS

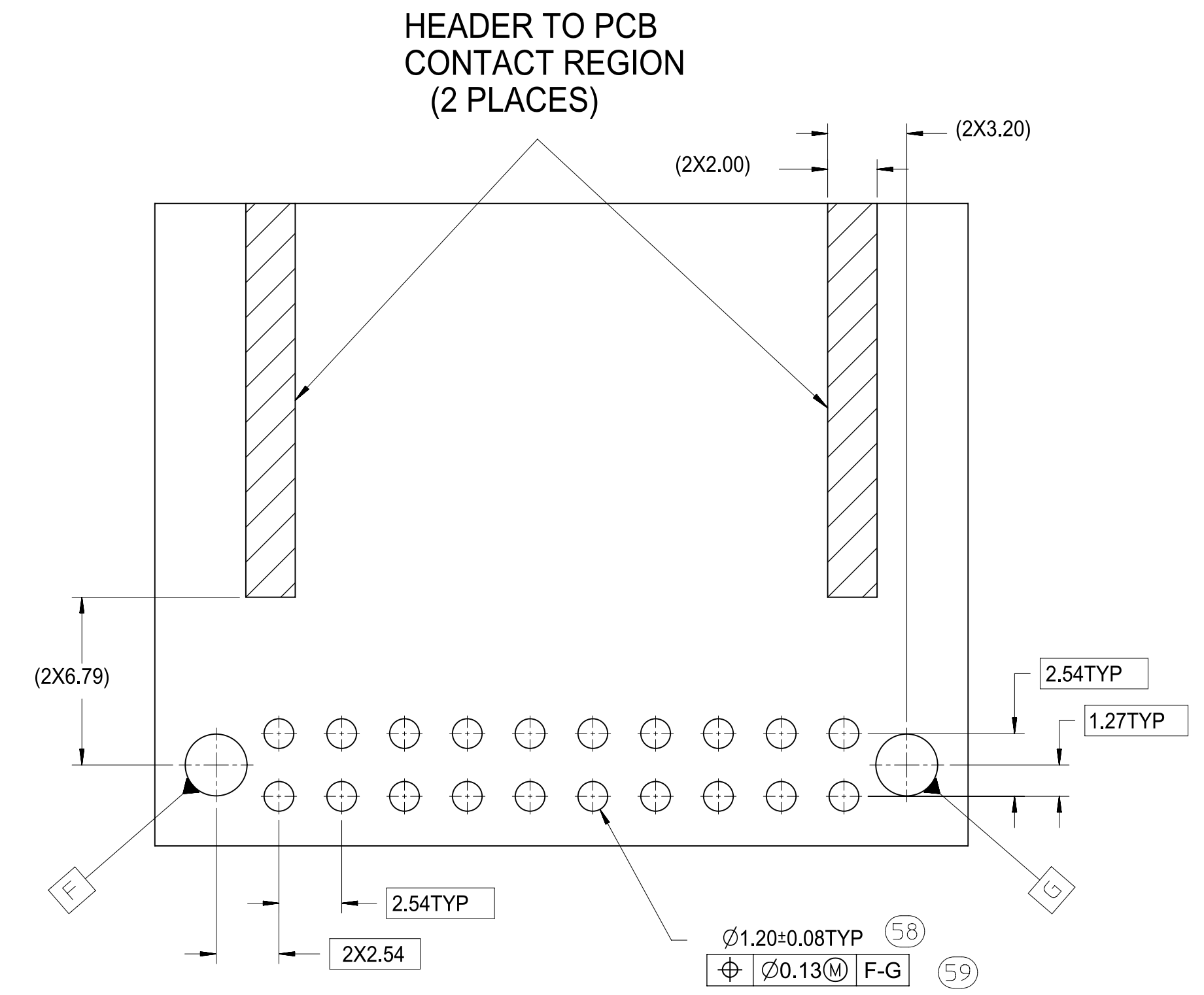


THIS DRAWING CONTAINS INFORMATION THAT IS PROPRIETARY TO MOLEX ELECTRONIC TECHNOLOGIES, LLC AND SHOULD NOT BE USED WITHOUT WRITTEN PERMISSION											
DIMENSION UNITS		SCALE		CURRENT REV DESC: SEE REVISION CHART							
mm		4:1									
GENERAL TOLERANCES (UNLESS SPECIFIED)											
ANGULAR TOL ± 1°											
4 PLACES		± 0		EC NO:							
3 PLACES		± 0		DRWN: Raghu GV				26-Dec-2022			
2 PLACES		± 0.13		CHK'D: Kelly TANG				13-Jan-2023			
1 PLACE		± 0.25		APPR: Ringo Hu				13-Jan-2023			
0 PLACES		± 0		INITIAL REVISION:							
DRAFT WHERE APPLICABLE MUST REMAIN WITHIN DIMENSIONS				THIRD ANGLE PROJECTION		DRAWING SERIES		MATERIAL NUMBER		CUSTOMER	
				D-SIZE		34708		SD-34708-300		GENERAL MARKET	
								PSD 001		V2	
										5 OF 6	

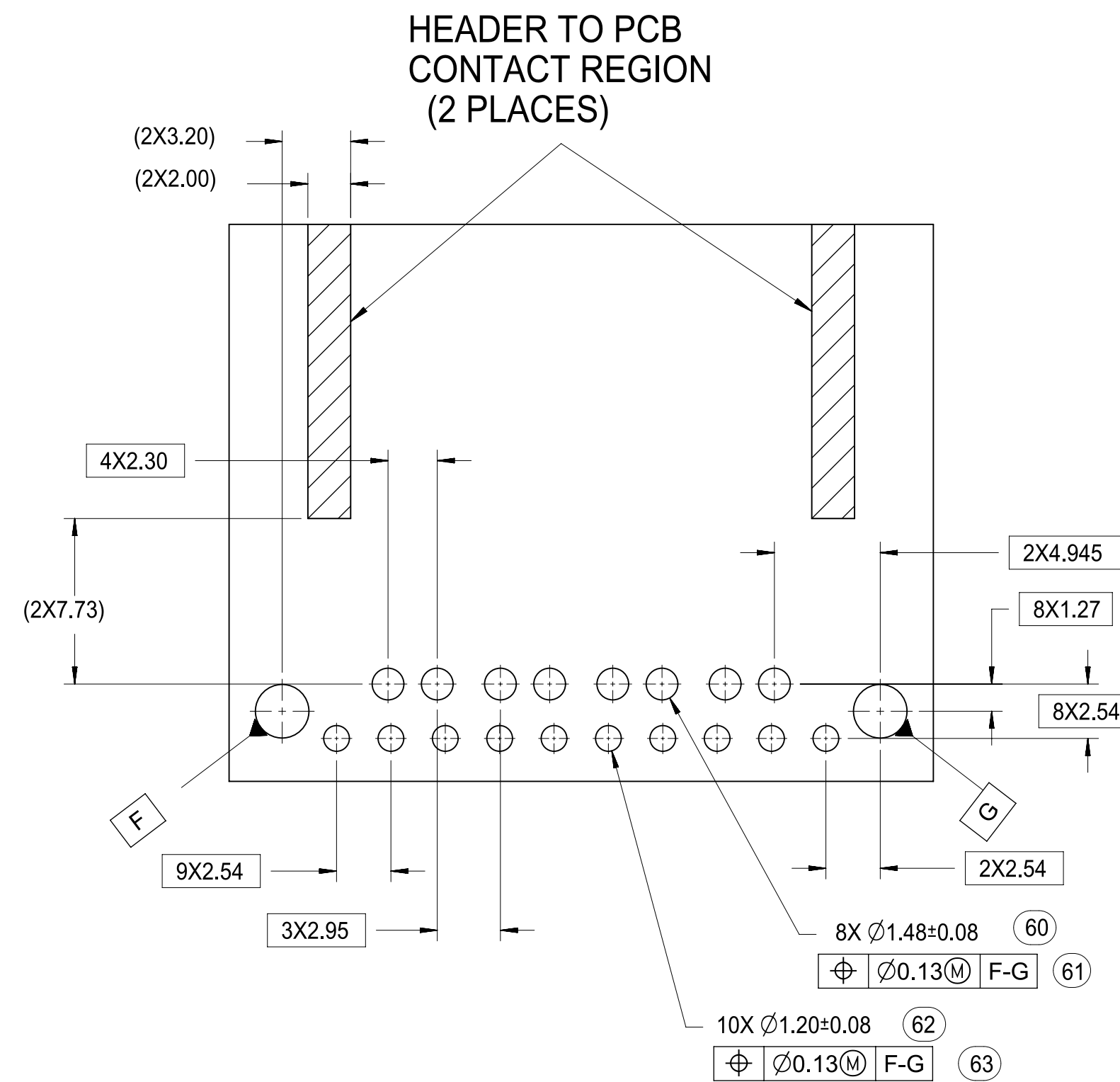
10 CKT HYBRID TEMPLATE PCB LAYOUT



8-20 CKT 0.64mm TEMPLATE PCB LAYOUT



14 CKT HYBRID TEMPLATE PCB LAYOUT



THIS DRAWING CONTAINS INFORMATION THAT IS PROPRIETARY TO MOLEX ELECTRONIC TECHNOLOGIES, LLC AND SHOULD NOT BE USED WITHOUT WRITTEN PERMISSION									
DIMENSION UNITS		SCALE		CURRENT REV DESC: SEE REVISION CHART					
FA = 0		mm		4:1					
FC = 0		GENERAL TOLERANCES (UNLESS SPECIFIED)							
FD = 0		ANGULAR TOL ± 1°							
DIVISIONAL SYMBOLS		4 PLACES		± 0		EC NO:			
		3 PLACES		± 0		DRWN: Raghu GV 26-Dec-2022			
		2 PLACES		± 0.13		CHK'D: Kelly TANG 13-Jan-2023			
		1 PLACE		± 0.25		APPR: Ringo Hu 13-Jan-2023			
		0 PLACES		± 0		INITIAL REVISION:			
						DRWN: Cindy Zhang 07-Apr-2022			
						APPR: Colin Zhang 09-May-2022			
DRAFT WHERE APPLICABLE MUST REMAIN WITHIN DIMENSIONS		THIRD ANGLE PROJECTION		DRAWING		SERIES		DOCUMENT NUMBER	
		D-SIZE		34708		SD-34708-300		PSD 001 V2	
						GENERAL MARKET		SHEET NUMBER	
								6 OF 6	

Looking for pricing, stock, or lifecycle information?

Click below to explore more details on WIN SOURCE:

[View 034696-9100 on WIN SOURCE](#)

[Molex, LLC Information](#)

Optimize Your Supply Chain with WIN SOURCE Solutions

- ✓ Global Sourcing Solution
- ✓ Obsolete Management
- ✓ Cost Control Management
- ✓ Shortage Management
- ✓ Alternative Solution
- ✓ Excess Inventory Management