



### Influence of environment temperature on power and pinch-off current rating



### Current - voltage characteristics with and without resistor (example)



### CRD for higher currents

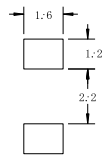
CRDs can be used in row to amplify permissible current.



### CRD for higher voltages

Using CRDs in row with Zener diodes allows the use of stable currents at higher voltage values.

### Recommended mounting pad dimensions (S series only)



### Dynamic characteristics (voltage - current)



### How to compensate current reduction due to heat up of the CRD

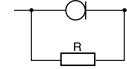
For currents of 1 mA or more resistors can be used together with CRDs to compensate for current decreases and fluctuations. The following values are typical for compensation resistors.

Rated power: 500 mW

Product number	S-102	S-152	S-202	S-272	S-352	S-452	S-562	S-822	S-103	S-123	S-153	S-183	S-223
Recommended resistance value	1.1 MΩ	430 kΩ	300 kΩ	200 kΩ	130 kΩ	91 kΩ	62 kΩ	27 kΩ	18 kΩ	15 kΩ	12 kΩ	9 kΩ	5.6 kΩ

Rated power: 300 mW

Product number	E-102	E-152	E-202	E-272	E-352	E-452	E-562	E-822	E-103	E-123	E-153	E-183
Recommended resistance value	1 MΩ	390 kΩ	240 kΩ	120 kΩ	82 kΩ	56 kΩ	39 kΩ	20 kΩ	15 kΩ	11 kΩ	9.1 kΩ	7.5 kΩ





### Reliability data

Item	Test conditions	Criteria
Resistance to soldering heat	10 s at 260 °C (wave soldering)	$\Delta I_p \pm 5\%$
Solderability	3 s at 245 °C Flux material: Rosin 25%, propanol 75%	More than 90% soldered
Dry heat	1000 hours at 150 °C	$\Delta I_p \pm 5\%$
Damp heat (CRD S)	1000 hours at 85 °C and 85% humidity	
Damp heat (CRD E)	1000 hours at 70 °C and 90% humidity	
Temperature cycle / thermal shock (CRD S)	10 cycles as below: 1. - 55 °C for 15 minutes 2. Room temperature for 15 minutes 3. 150 °C for 15 minutes 4. Room temperature for 15 minutes	
Temperature cycle / thermal shock (CRD E)	5 cycles as below: 1. - 25 °C for 30 minutes 2. Room temperature for 15 minutes 3. 150 °C for 30 minutes 4. Room temperature for 15 minutes	

## Looking for pricing, stock, or lifecycle information?

Click below to explore more details on WIN SOURCE:

-  [View E-152 on WIN SOURCE](#)
-  [Semitec USA Corp Information](#)

## Optimize Your Supply Chain with WIN SOURCE Solutions

-  Global Sourcing Solution
-  Obsolete Management
-  Cost Control Management
-  Shortage Management
-  Alternative Solution
-  Excess Inventory Management