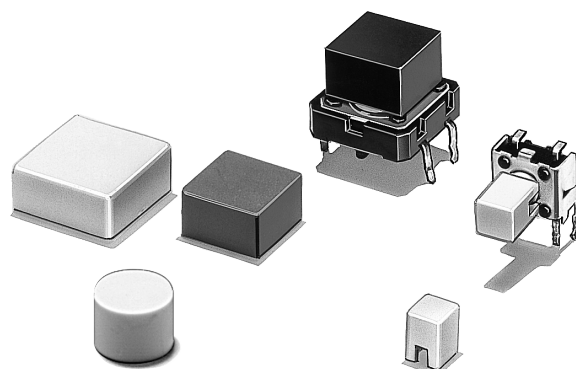


Key Top Designed Specially for Projected-plunger-type B3F, B3FS, and B3W Switches

- Available in a wide range of colors and sizes.

RoHS Compliant



■ List of Models

For B3F, B3FS, and B3W Switches

Color	6 × 6 mm Switches B3F-1000, -1000-G, B3F-3000, -3000-G, -6000, B3W-1000, B3FS-1000			12 × 12 mm Switches B3F-4000, -5000, -5001, B3W-4000, B3FS-4000		
	4 × 4 mm Key Top	6 mm dia. Key Top	D-type Key Top	9 × 9 mm Key Top	12 × 12 mm Key Top	9.5-mm dia.
Ivory	B32-1000	B32-2000	B32-2100	B32-1200	B32-1300	B32-1600
Black	B32-1010	B32-2010	B32-2110	B32-1210	B32-1310	B32-1610
Orange	B32-1020	---	---	B32-1220	B32-1320	B32-1620
Yellow	B32-1030	---	---	B32-1230	B32-1330	B32-1630
Blue	B32-1040	---	---	B32-1240	B32-1340	---
Green	B32-1050	---	---	B32-1250	B32-1350	---
White	B32-1060	---	---	B32-1260	B32-1360	---
Red	B32-1080	---	---	B32-1280	B32-1380	---

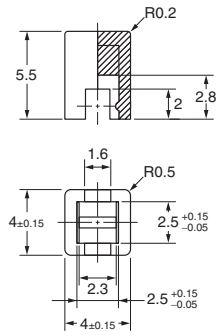
Note: Bulk Packed, 1000 pcs per bag. Order in multiple of the package quantity.

■ Characteristics

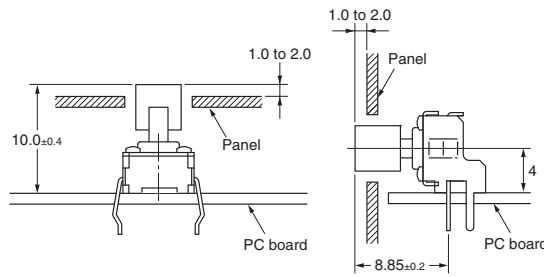
Ambient operating temperature	-25°C to +70°C at 60%RH max. (with no icing or condensation)
Ambient operating humidity	35% to 85% (at 5 to 35°C)

■ Dimensions (Unit: mm)

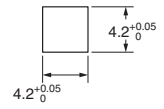
B32-10□0



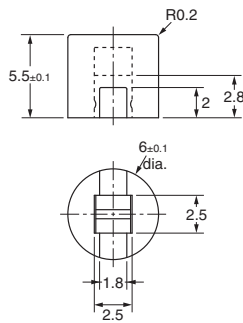
Reference Dimensions



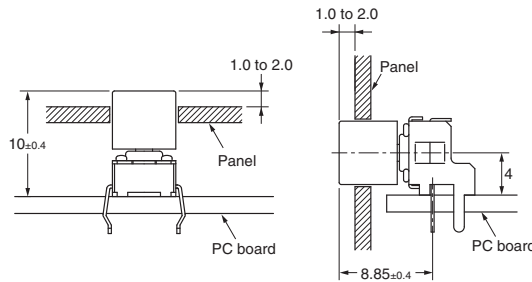
Panel Cutout



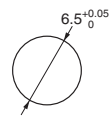
B32-2000
B32-2010



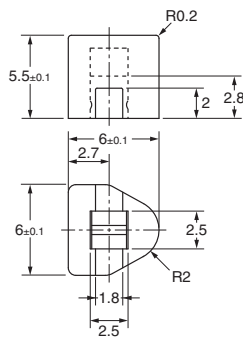
Reference Dimensions



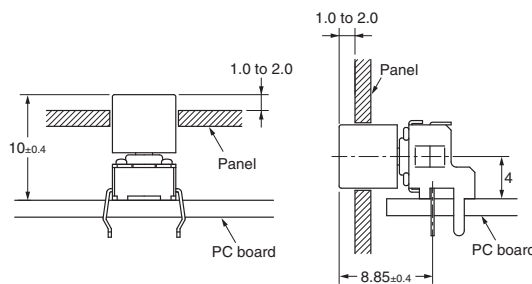
Panel Cutout



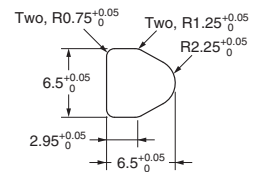
B32-2100
B32-2110



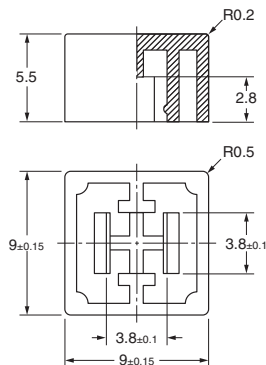
Reference Dimensions



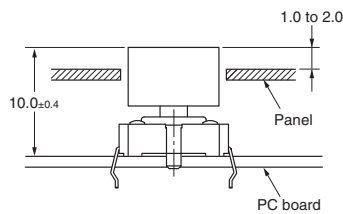
Panel Cutout



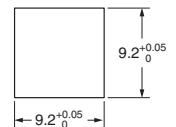
B32-12□0



Reference Dimensions

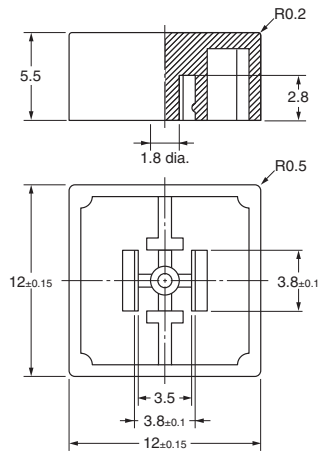
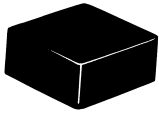


Panel Cutout

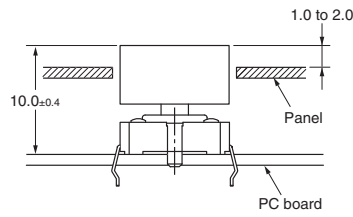


Note: Unless otherwise specified, a tolerance of ± 0.4 mm applies to all dimensions.

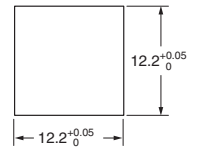
B32-13□0



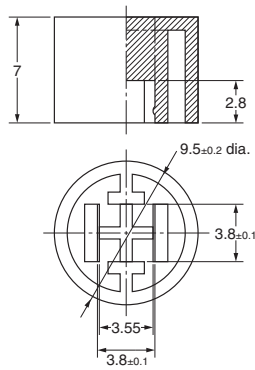
Reference Dimensions



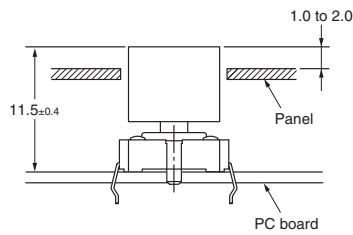
Panel Cutout



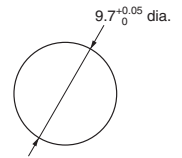
B32-16□0



Reference Dimensions



Panel Cutout



Note: Unless otherwise specified, a tolerance of ± 0.4 mm applies to all dimensions.

■ Precautions

Mount the Key Top on to the Switch after soldering, otherwise the Key Top may be deformed by the soldering heat.

Please check each region's Terms & Conditions by region website.



OMRON Corporation
Electronic and Mechanical Components Company

Regional Contact	
Americas https://www.components.omron.com/	Europe http://components.omron.eu/
Asia-Pacific https://ecb.omron.com.sg/	China https://www.ecb.omron.com.cn/
Korea https://www.omron-ecb.co.kr/	Japan https://www.omron.co.jp/ecb/

© OMRON Corporation 2018 All Rights Reserved.
In the interest of product improvement, specifications are subject to change without notice.

Looking for pricing, stock, or lifecycle information?

Click below to explore more details on WIN SOURCE:

-  [View B32-1360 on WIN SOURCE](#)
-  [Omron Information](#)

Optimize Your Supply Chain with WIN SOURCE Solutions

-  Global Sourcing Solution
-  Obsolete Management
-  Cost Control Management
-  Shortage Management
-  Alternative Solution
-  Excess Inventory Management