

4

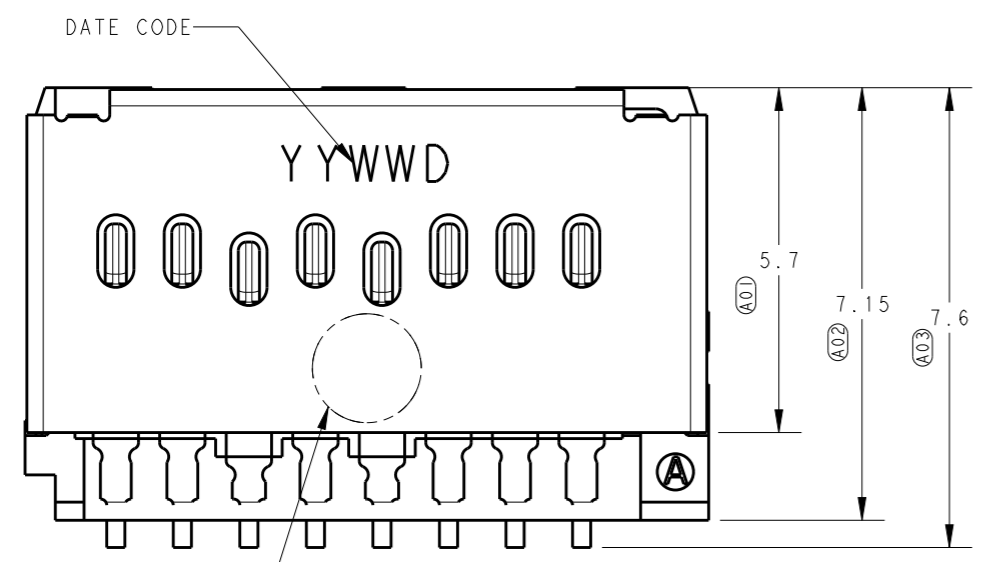
3

2

1

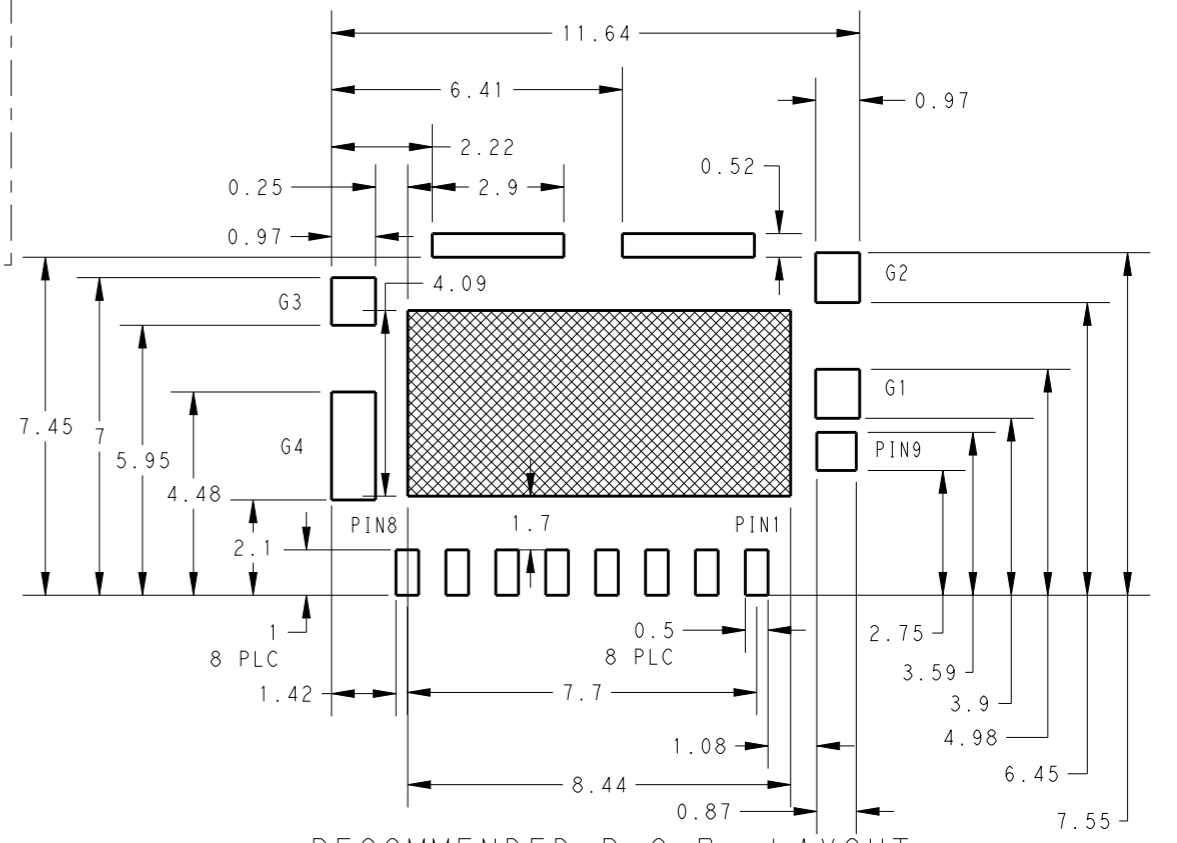
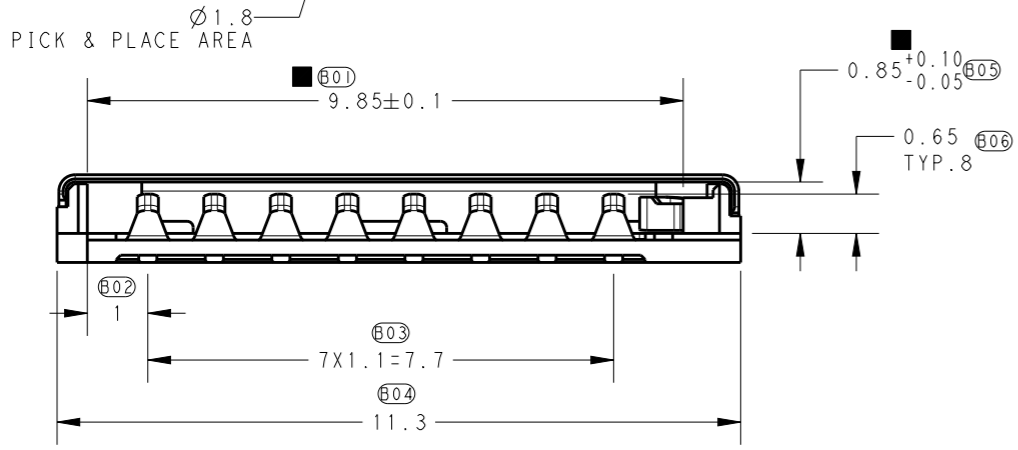
THIS DRAWING IS UNPUBLISHED. RELEASED FOR PUBLICATION 20  
 © COPYRIGHT 20 BY - ALL RIGHTS RESERVED.

LOC		DIST		REVISIONS		
P	LTR	DESCRIPTION	DATE	DWN	APVD	
	A	INITIAL RELEASE	14JUN2011	D.Z	S.Y	
	B	REVISED PER ECR-12-002341	06FEB2012	S.W	S.Y	
	C	REVISED PER ECR-15-017537	12JAN2016	D.Z	S.L	
	C1	REVISED PER ECR-16-012137	24AUG2016	D.Z	S.L	



Mating End---0 ±0.20  
 Card Detect Contact---0.88 ±0.20  
 Contact 1,2,3,5,7,8---1.8 ±0.20  
 Contact 4,6---2.4 ±0.20  
 Mating Begin---5.55 ±0.20

CONTACTS MATING SEQUENCE

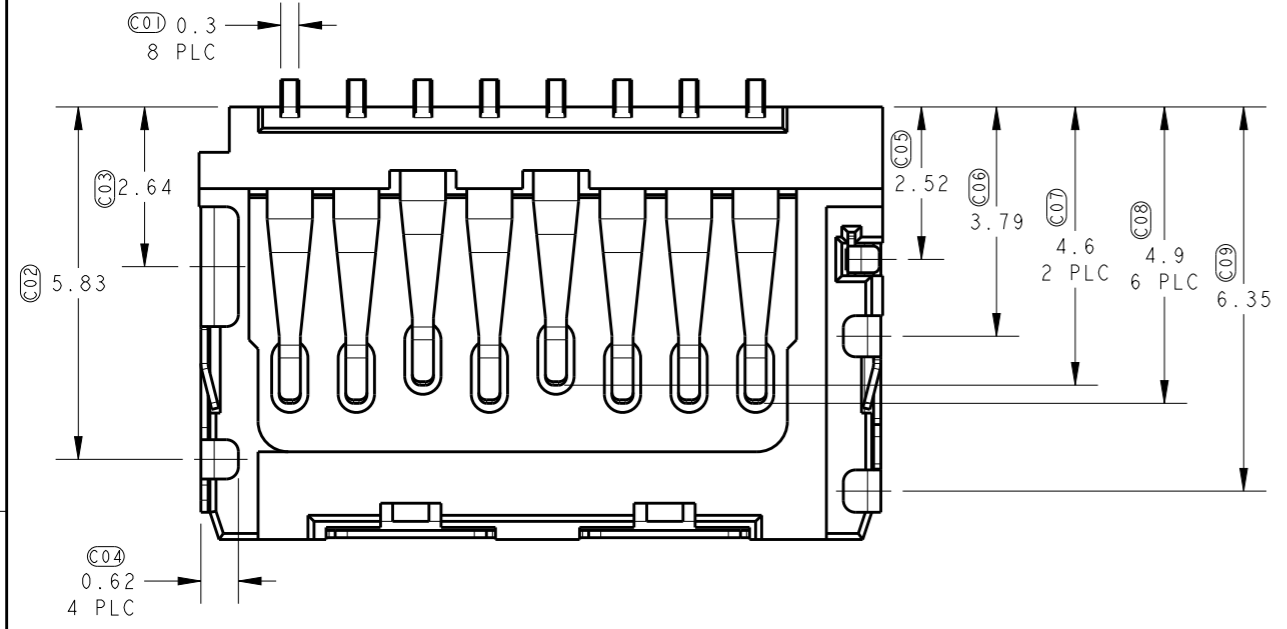


RECOMMENDED P.C.B. LAYOUT

(GENERAL TOLERANCE : ±0.05)

☒ PATTERN PROHIBITION AREA

- 1 MATERIAL  
 HOUSING : LCP UL94V-0  
 CONTACT : PHOSPHOR BRONZE  
 SWITCH CONTACT : PHOSPHOR BRONZE  
 SHELL : STAINLESS STEEL
  - 2 FINISH  
 CONTACT : Ni PL 0.0013 MIN. ALL OVER  
 Au PL 0.0003 MIN. AT CONTACT AREA  
 Au FLASH PL 0.00005-0.00013 AT SOLDERING AREA  
 SWITCH CONTACT: Ni PL 0.0013 MIN. ALL OVER  
 Au PL 0.0003 MIN. AT CONTACT AREA  
 Au FLASH PL 0.00005-0.00013 AT SOLDERING AREA  
 SHELL : Ni PL 0.0013 MIN. ALL OVER  
 Au FLASH PL 0.00005-0.00013 AT SOLDERING AREA
  - 3. COPLANARITY : 0.08MAX.
  - 4. RECOMMENDED STENCIL THICKNESS 0.1mm MIN.
- : CRITICAL ITEMS.

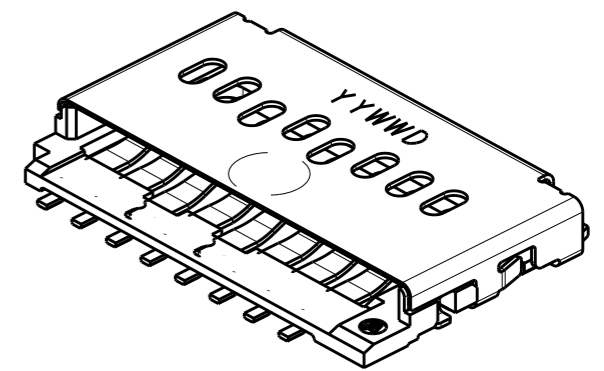
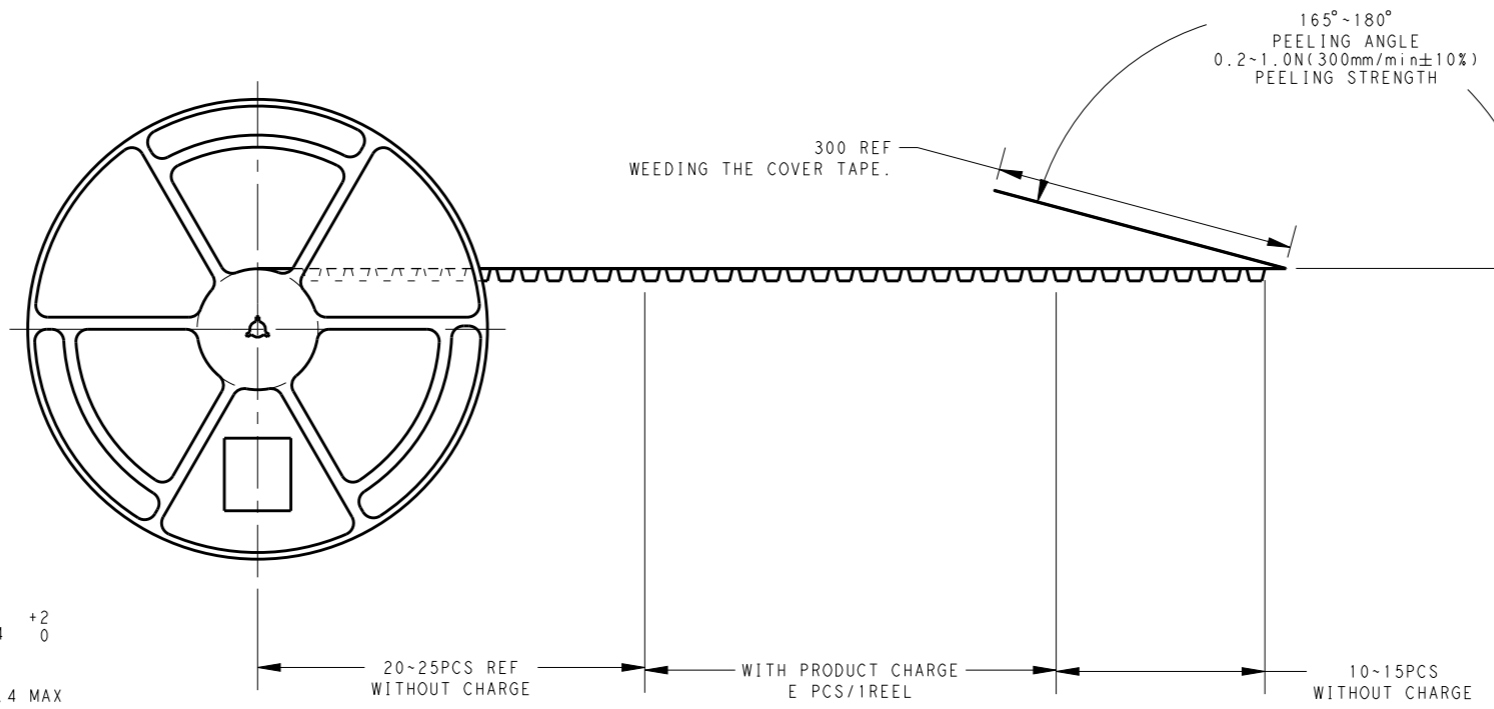
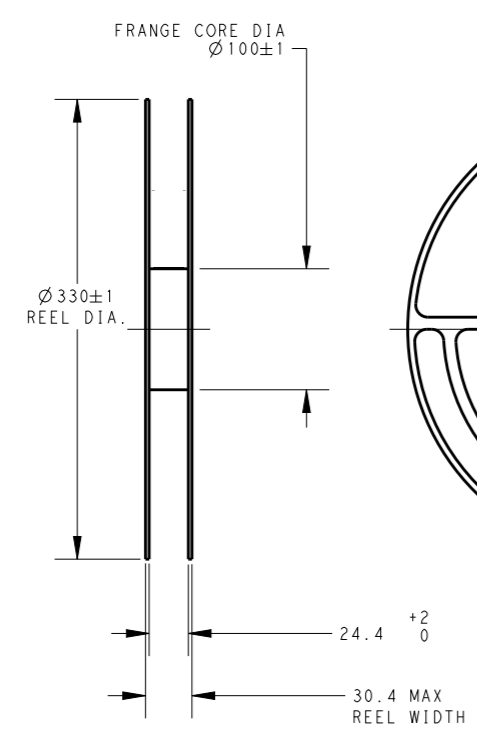
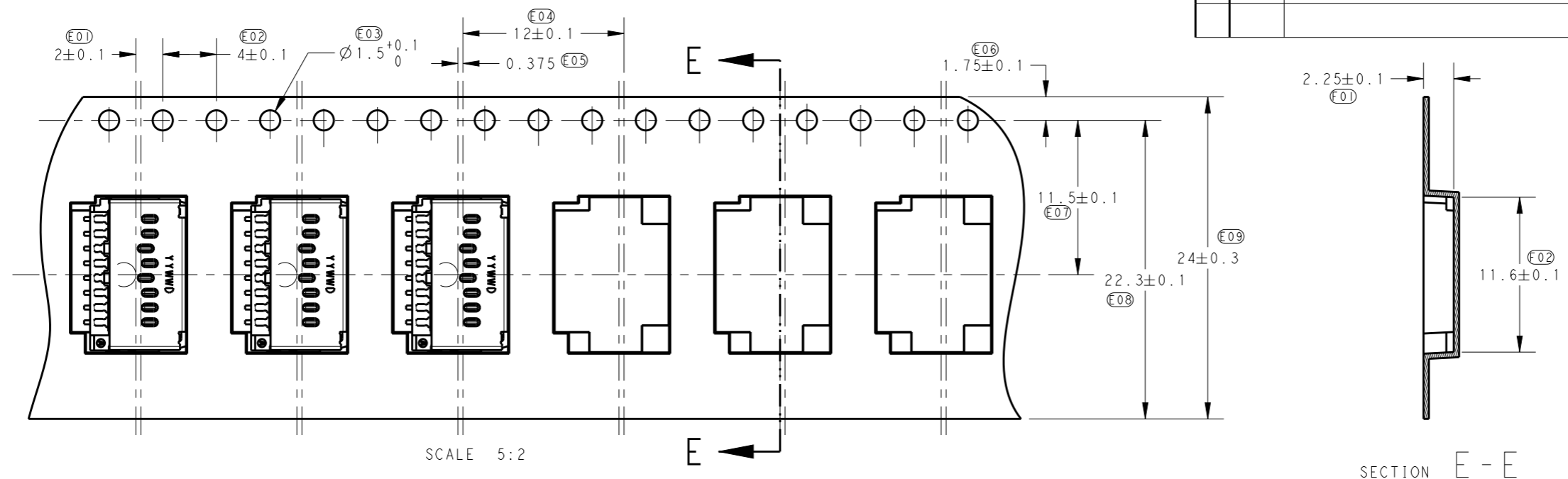



1932739-1: AS SHOWN

THIS DRAWING IS A CONTROLLED DOCUMENT.		DWN 13MAY2011 DANIEL ZHANG	TE Connectivity													
		CHK 13MAY2011 WENKE HE														
DIMENSIONS: mm		APVD 13MAY2011 STEVEN YAO	NAME MicroSD SOCKET PUSH/PULL, LOW PROFILE TYPE													
TOLERANCES UNLESS OTHERWISE SPECIFIED: ±0.2		PRODUCT SPEC 108-115017	RESTRICTED TO													
<table border="1"> <tr><td>0 PLC</td><td>±</td></tr> <tr><td>1 PLC</td><td>±0.5</td></tr> <tr><td>2 PLC</td><td>±0.13</td></tr> <tr><td>3 PLC</td><td>±0.013</td></tr> <tr><td>4 PLC</td><td>±0.0001</td></tr> <tr><td>ANGLES</td><td>±</td></tr> </table>		0 PLC	±	1 PLC	±0.5	2 PLC	±0.13	3 PLC	±0.013	4 PLC	±0.0001	ANGLES	±	APPLICATION SPEC -	SIZE A3	CAGE CODE 00779
0 PLC	±															
1 PLC	±0.5															
2 PLC	±0.13															
3 PLC	±0.013															
4 PLC	±0.0001															
ANGLES	±															
MATERIAL 1		FINISH 2	DRAWING NO 1932739	SCALE 5:1												
		WEIGHT -	SHEET 1	OF 2												
		CUSTOMER DRAWING	REV C1													

THIS DRAWING IS UNPUBLISHED. RELEASED FOR PUBLICATION 20  
 © COPYRIGHT 20 BY - ALL RIGHTS RESERVED.

LOC		DIST		REVISIONS			
P	LTR	DESCRIPTION	DATE	DWN	APVD		
-	-	SEE SHEET 1	-	-	-		



THIS DRAWING IS A CONTROLLED DOCUMENT.		DWN DANIEL ZHANG 13MAY2011	 TE Connectivity	
DIMENSIONS: mm		CHK WENKE HE 13MAY2011		
TOLERANCES UNLESS OTHERWISE SPECIFIED:		APVD STEVEN YAO 13MAY2011	NAME MicroSD SOCKET PUSH/PULL, LOW PROFILE TYPE	
0 PLC ±- 1 PLC ±0.5 2 PLC ±0.13 3 PLC ±0.013 4 PLC ±0.0001 ANGLES ±-		PRODUCT SPEC -	RESTRICTED TO -	
MATERIAL -		FINISH -	APPLICATION SPEC -	SIZE A3
		WEIGHT -	WEIGHT -	CAGE CODE 00779
				DRAWING NO C-1932739
				SCALE 5:1
				SHEET 2 OF 2
				REV C1
				CUSTOMER DRAWING

## Looking for pricing, stock, or lifecycle information?

Click below to explore more details on WIN SOURCE:

- [View 1932739-1 on WIN SOURCE](#)
- [TE Connectivity Information](#)

## Optimize Your Supply Chain with WIN SOURCE Solutions

- ✓ Global Sourcing Solution
- ✓ Obsolete Management
- ✓ Cost Control Management
- ✓ Shortage Management
- ✓ Alternative Solution
- ✓ Excess Inventory Management