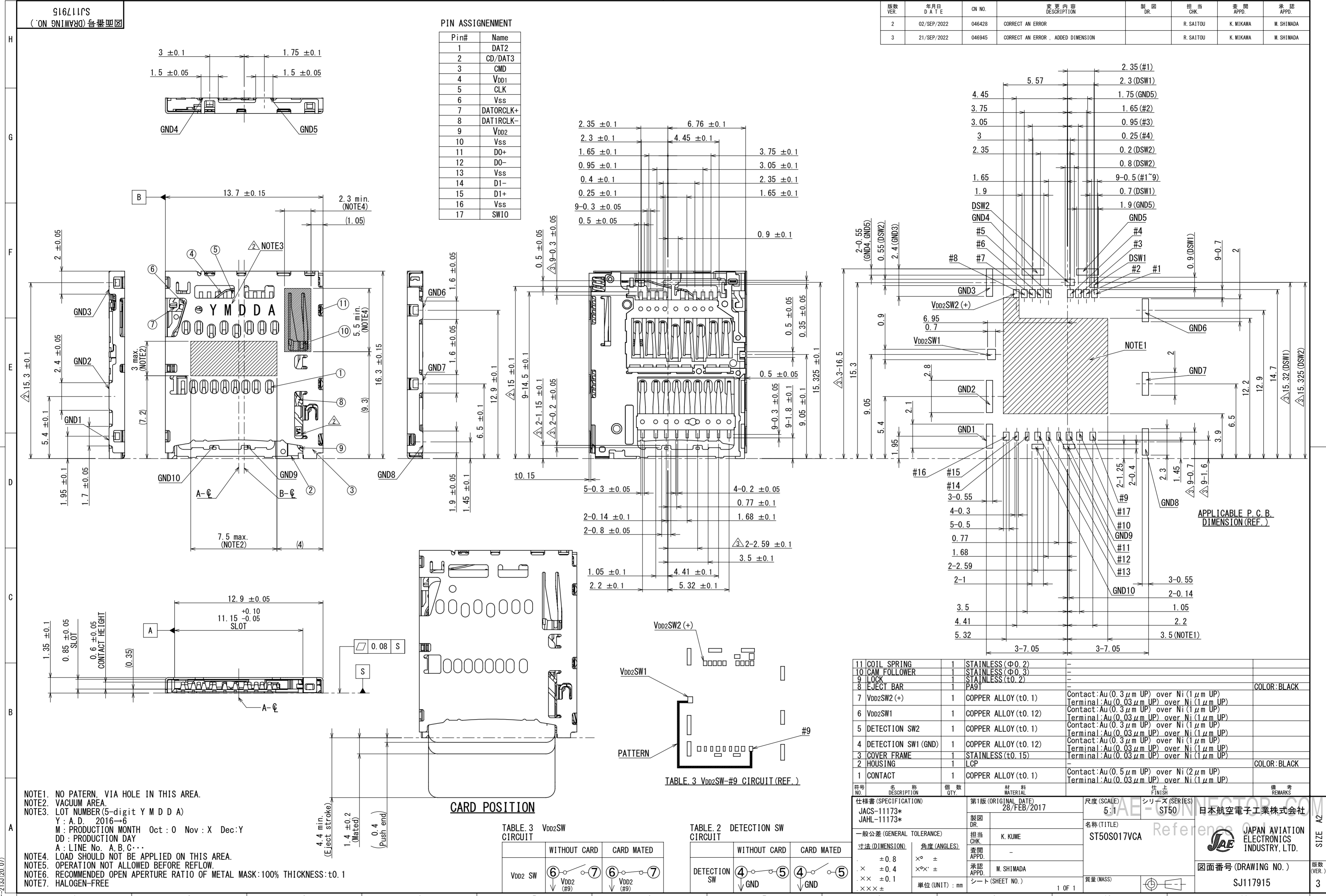


PIN ASSIGNMENT

Pin#	Name
1	DAT2
2	CD/DAT3
3	CMD
4	VDD1
5	CLK
6	VSS
7	DATORCLK+
8	DAT1RCLK-
9	VDD2
10	VSS
11	DO+
12	DO-
13	VSS
14	D1-
15	D1+
16	VSS
17	SW10

版数 VER.	年月日 DATE	図番 CN NO.	変更内容 DESCRIPTION	製図 DR.	担当 CHK.	査閲 APPD.	承認 APPD.
2	02/SEP/2022	046428	CORRECT AN ERROR		R. SAITOU	K. MIKAWA	M. SHIMADA
3	21/SEP/2022	046945	CORRECT AN ERROR , ADDED DIMENSION		R. SAITOU	K. MIKAWA	M. SHIMADA



NOTE1. NO PATTERN, VIA HOLE IN THIS AREA.
 NOTE2. VACUUM AREA.
 NOTE3. LOT NUMBER(5-digit Y M D D A)
 Y: A.D. 2016→6
 M: PRODUCTION MONTH Oct: 0 Nov: X Dec: Y
 DD: PRODUCTION DAY
 A: LINE No. A, B, C...
 NOTE4. LOAD SHOULD NOT BE APPLIED ON THIS AREA.
 NOTE5. OPERATION NOT ALLOWED BEFORE REFLOW.
 NOTE6. RECOMMENDED OPEN APERTURE RATIO OF METAL MASK: 100% THICKNESS: t.0.1
 NOTE7. HALOGEN-FREE

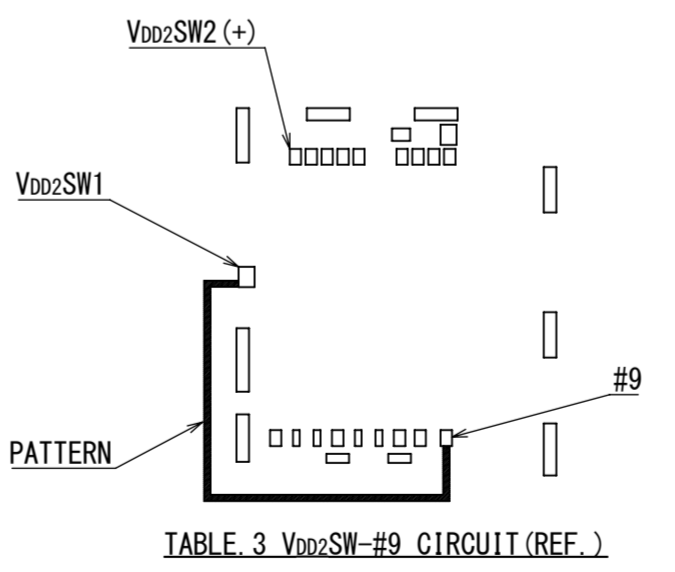
CARD POSITION

TABLE. 3 VDD2SW CIRCUIT

	WITHOUT CARD	CARD MATED
VDD2 SW	⑥ VDD2 (#9) — ⑦	⑥ VDD2 (#9) — ⑦

TABLE. 2 DETECTION SW CIRCUIT

	WITHOUT CARD	CARD MATED
DETECTION SW	④ GND — ⑤	④ GND — ⑤



符号 NO.	名称 DESCRIPTION	個数 QTY.	材料 MATERIAL	仕上 FINISH	備考 REMARKS
11	COIL SPRING	1	STAINLESS (Φ0.2)	-	
10	CAM FOLLOWER	1	STAINLESS (Φ0.3)	-	
9	LOCK	1	STAINLESS (t.0.2)	-	
8	EJECT BAR	1	PA9T	-	COLOR: BLACK
7	VDD2SW2 (+)	1	COPPER ALLOY (t.0.1)	-	Contact: Au(0.3μm UP) over Ni(1μm UP) Terminal: Au(0.03μm UP) over Ni(1μm UP)
6	VDD2SW1	1	COPPER ALLOY (t.0.12)	-	Contact: Au(0.3μm UP) over Ni(1μm UP) Terminal: Au(0.03μm UP) over Ni(1μm UP)
5	DETECTION SW2	1	COPPER ALLOY (t.0.1)	-	Contact: Au(0.3μm UP) over Ni(1μm UP) Terminal: Au(0.03μm UP) over Ni(1μm UP)
4	DETECTION SW1 (GND)	1	COPPER ALLOY (t.0.12)	-	Contact: Au(0.3μm UP) over Ni(1μm UP) Terminal: Au(0.03μm UP) over Ni(1μm UP)
3	COVER FRAME	1	STAINLESS (t.0.15)	-	Terminal: Au(0.03μm UP) over Ni(1μm UP)
2	HOUSING	1	LCP	-	COLOR: BLACK
1	CONTACT	1	COPPER ALLOY (t.0.1)	-	Contact: Au(0.5μm UP) over Ni(2μm UP) Terminal: Au(0.03μm UP) over Ni(1μm UP)

仕様書 (SPECIFICATION) 第1版 (ORIGINAL DATE) 28/FEB/2017 尺度 (SCALE) 5:1

JACS-11173* JABL-11173* シリーズ (SERIES) JAE-ST50 日本航空電子工業株式会社

製造 DR. 担当 CHK. K. KUME 名称 (TITLE) ST50S017VCA

一般公差 (GENERAL TOLERANCE) 寸法 (DIMENSION) 角度 (ANGLES) 公差 (TOLERANCE)

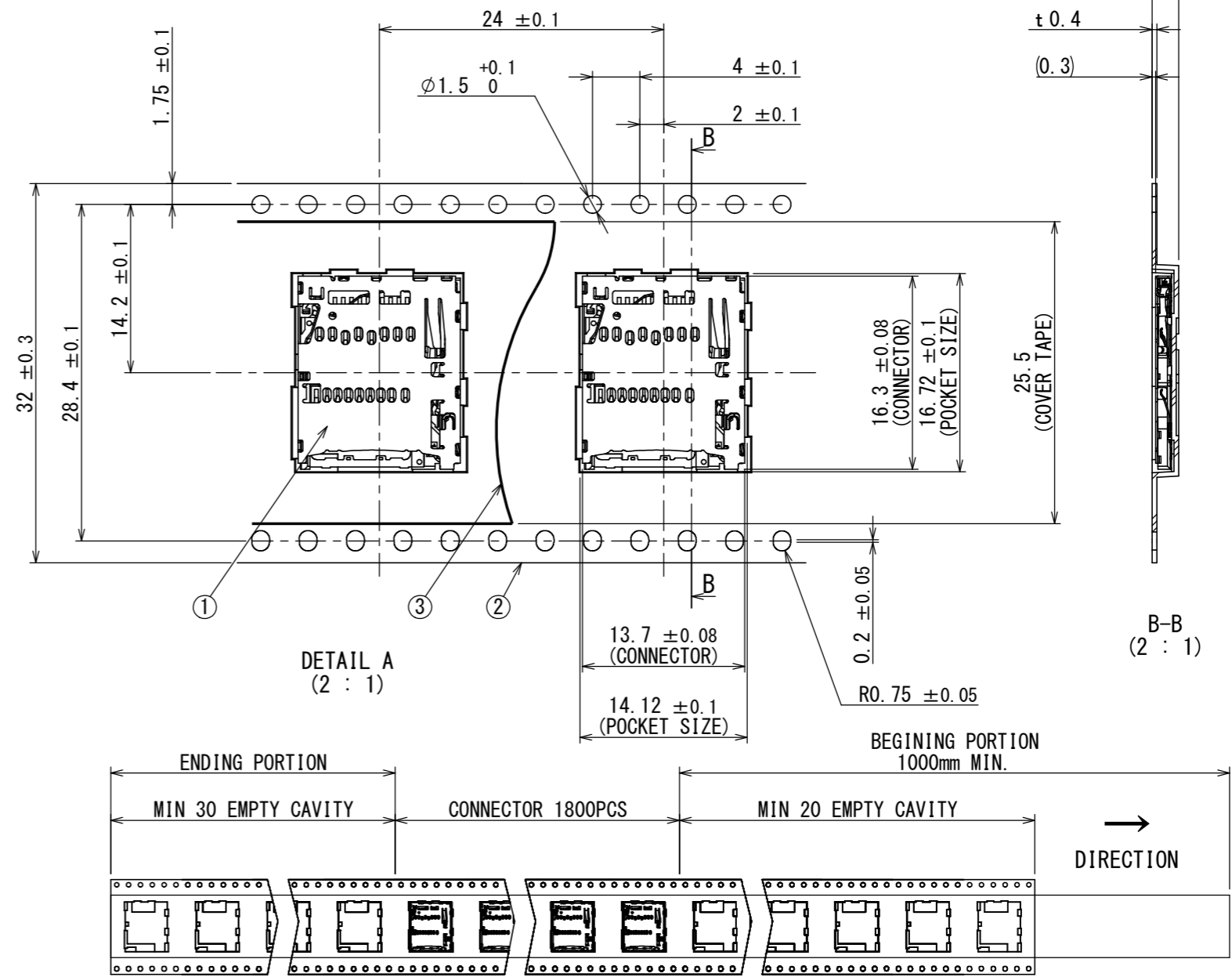
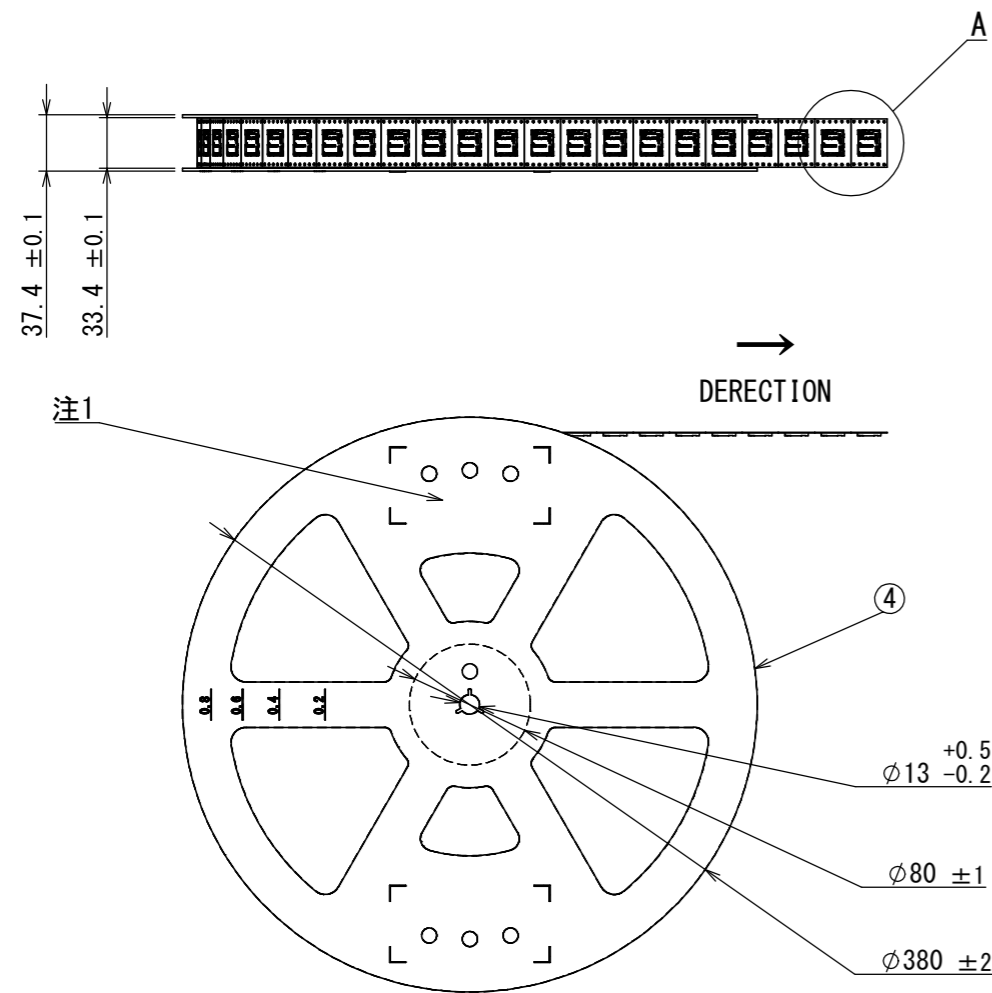
単位 (UNIT): mm 1 OF 1

質量 (MASS) 図面番号 (DRAWING NO.) SJ117915 版数 (VER.) 3

DOF-2131(20.07)

WISDOM承認 2022/11/22

版数 VER.	年月日 DATE	内容 CN NO.	変更内容 DESCRIPTION	製図 DR.	担当 CHK.	査閲 APPD.	承認 APPD.
------------	-------------	--------------	---------------------	-----------	------------	-------------	-------------



NOTE1. SUFFIX "ST50S017VCAR1800" OF THE PART NUMBER INDICATES THAT 1800 PCS. OF ST50S017VCA CONNECTORS ARE ACCOMODATED IN ONE REEL.
 NOTE2. THE LABEL IS TO BE ATTACHED ON THE MAGAZINE AS SHOWN.
 NOTE3. REFER TO THE DRAWING. SJ117915(ST50S017VCA) FOR THE DIMENSION OF THE CONNECTOR.

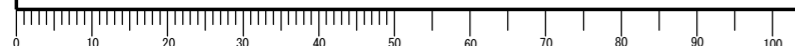
NOTE2
 DESCRIPTION: ST50S017VCAR1800
 QTY : 1800
 LOT NO : YYMMDD-L-***
 EMOSS CODE: TB3224

24 : PITCH
 32 : TAPE WIDTH

4	REEL	1	PS		
3	COVER TAPE	1	PET		
2	CARRIER TAPE	1	PS		
1	ST50S017VCA	1800	-		SJ117915 (ST50S017VCA)
符号 NO.	名称 DESCRIPTION	個数 QTY.	材料 MATERIAL	仕上 FINISH	図番 DWG NO.

仕様書 (SPECIFICATION) JACS-11173* J AHL-11173*		第1版 (ORIGINAL DATE) 28/FEB/2017		尺度 (SCALE) 1:5		シリーズ (SERIES) ST50		日本航空電子工業株式会社	
一般公差 (GENERAL TOLERANCE)		製図 DR.		名称 (TITLE) ST50S017VCAR1800		JAE		JAPAN AVIATION ELECTRONICS INDUSTRY, LTD.	
寸法 (DIMENSION)		担当 CHK. K. KUME		質量 (MASS)		図面番号 (DRAWING NO.) SJ117916		版数 (VER.) 1	
角度 (ANGLES)		査閲 APPD.		承認 APPD. M. SHIMADA					
単位 (UNIT) : mm		承認 APPD.							

DCF-C-212H(12.08)



WISDOM承認 2017/03/07

Looking for pricing, stock, or lifecycle information?

Click below to explore more details on WIN SOURCE:

 [View ST50S017VCAR1800 on WIN SOURCE](#)

 [JAE Electronics Information](#)

Optimize Your Supply Chain with WIN SOURCE Solutions

-  Global Sourcing Solution
-  Obsolete Management
-  Cost Control Management
-  Shortage Management
-  Alternative Solution
-  Excess Inventory Management