



M12 PCB/PANEL CONNECTORS 8/12PIN

M12 PCB/Panel Connectors 8/12Pin

TE Connectivity extends its M12 connector portfolio with 8 and 12 positions for direct mounting onto PCBs and panels to complement field-installable connector and cable assembly solutions. The new plug-in PCB connectors are easy to install and help to increase production efficiency and decrease installation cost for installers in industrial automation, machinery, industrial ethernet, sensors, and other areas where IP67 protection is needed. The high pin density on the 12-pin connector, in particular, provides customers with a very compact design. Adding this product series to our portfolio allows us to better serve our customers and accommodate their needs for higher signal and data transmission in harsh industrial environments.

BENEFITS

- Compact design with high density connection
- Plug-&-Play mating for easy and fast installation
- Quick and reliable connection for PCB and panel mount

KEY FEATURES

- Available for 8 & 12 positions
- IP67 with dust-tightness and water-proof for at least 1m

APPLICATIONS

- Machinery
- Automation Integration
- Vision System
- Semiconductor manufacturing
- Factory automation machines

MECHANICAL

- Seal Rating: IP67 (When fully mated)
- Operating Temperature: -40 to 85°C
- Durability: 100 cycles

ELECTRICAL

- Voltage: 30V(AC/DC)
- Rated Current:
 - 2.0A for 8 pin
 - 1.5A for 12 pin

MATERIALS

- M12 Body: Copper Alloy
- M12 Housing: Nylon
- Contact: Copper Alloy

APPLICATIONS & STANDARDS

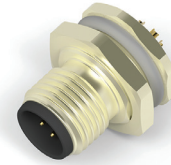
- Product Specification: [108-106140](#)
- Application Specification: [114-137144](#)
- IEC 61076-2-101
- UL 2238

M12 PCB/Panel Connectors 8/12Pin

PRODUCT OFFERINGS

M12 A-coding Solder Wire

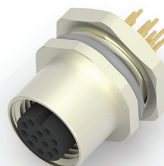
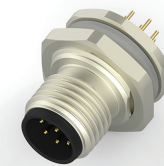
TEP	Poles	Mounting	Type
T4130012081-000	8	Rear	Male
T4132012081-000	8	Front	Male
T4130012121-000	12	Rear	Male
T4132012121-000	12	Front	Male



TEP	Poles	Mounting	Type
T4131012081-000	8	Rear	Female
T4133012081-000	8	Front	Female
T4131012121-000	12	Rear	Female
T4133012121-000	12	Front	Female

M12 A-coding Solder PCB

TEP	Poles	Mounting	Type
T4140012081-000	8	Rear	Male
T4142012081-000	8	Front	Male
T4140012121-000	12	Rear	Male
T4142012121-000	12	Front	Male



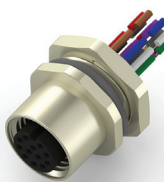
TEP	Poles	Mounting	Type
T4141012081-000	8	Rear	Female
T4143012081-000	8	Front	Female
T4141012121-000	12	Rear	Female
T4143012121-000	12	Front	Female

M12 A-coding 0.2m Wire

TEP	Poles	Mounting	Type
T4171020008-001	8	Rear	Male
T4171220008-001	8	Front	Male
T4171030012-001	12	Rear	Male
T4171230012-001	12	Front	Male



TEP	Poles	Mounting	Type
T4171120008-001	8	Rear	Female
T4171320008-001	8	Front	Female
T4171130012-001	12	Rear	Female
T4171330012-001	12	Front	Female



te.com

© 2018 TE Connectivity. All Rights Reserved.


TE Connectivity, TE Connectivity (logo) and Every Connection Counts are trademarks. All other logos, products and/or company names referred to herein might be trademarks of their respective owners.

While TE has made every reasonable effort to ensure the accuracy of the information in this brochure, TE does not guarantee that it is error-free, nor does TE make any other representation, warranty or guarantee that the information is accurate, correct, reliable or current. TE reserves the right to make any adjustments to the information contained herein at any time without notice. TE expressly disclaims all implied warranties regarding the information contained herein, including, but not limited to, any implied warranties of merchantability or fitness for a particular purpose. The dimensions in this catalog are for reference purposes only and are subject to change without notice. Specifications are subject to change without notice. Consult TE for the latest dimensions and design specifications.

1-1773955-5 SL 07/18 Tangence

Looking for pricing, stock, or lifecycle information?

Click below to explore more details on WIN SOURCE:

 [View T4141012121-000 on WIN SOURCE](#)

 [TE Connectivity](#) Information

Optimize Your Supply Chain with WIN SOURCE Solutions

-  Global Sourcing Solution
-  Obsolete Management
-  Cost Control Management
-  Shortage Management
-  Alternative Solution
-  Excess Inventory Management