



THE DATASHEET OF
302-R301



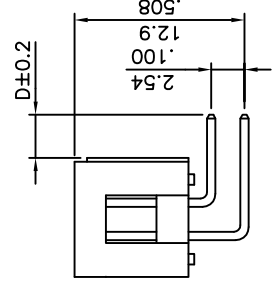
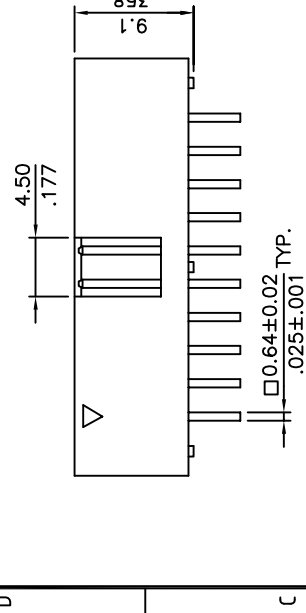
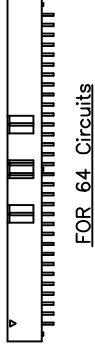
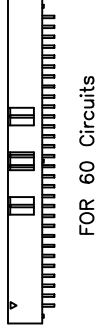
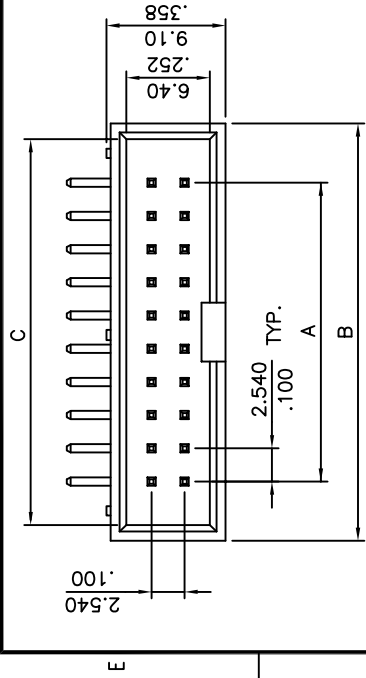
5

4

3

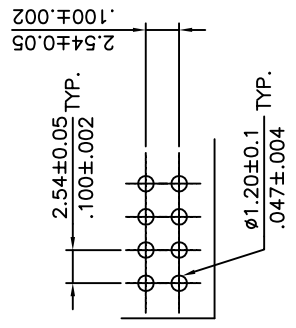
2

1



- A = 2.54 * No. of Spaces
- B = A + 10.16
- C = A + 7.86

* Available circuits: 06, 08, 10, 14, 16, 20, 24, 26, 30, 34, 40, 44, 50, 60, 64



Recommended P.C. Board Layout

THESE DRAWINGS AND SPECIFICATIONS ARE THE PROPERTY OF ON-SHORE TECHNOLOGY, INC. AND SHALL NOT BE REPRODUCED, COPIED OR USED IN ANY MANNER WITHOUT THE PRIOR WRITTEN CONSENT OF ON-SHORE TECHNOLOGY, INC.

SIGN	DATE

THIS IS CAD DRAWING

Material

- Insulator:
- Flammability:
- Color:
- Contacts:
- Plating termination:

Ratings

- Current:
- Voltage:
- Contact Resistance:
- Insulation Resistance:
- Dielectric Withstand:
- Operating Temperature:
- Solderability:

RoHS Compliant

PART NUMBER

302-RXX



TITLE	302 Series - Dual Row Right Angle Bo
PART NO.	302-RXXX
APPROVED	
CHECKED	Marvin 2003.06.16
DESIGNED	Marvin 2003.06.16
DRAWN	Marvin 2003.06.16

5

4

3

2

1

Looking for pricing, stock, or lifecycle information?

Click below to explore more details on WIN SOURCE:

- ⊖ [View 302-R301 on WIN SOURCE](#)
- ⊖ [On Shore Technology Inc. Information](#)

Optimize Your Supply Chain with WIN SOURCE Solutions

- ✓ Global Sourcing Solution
- ✓ Obsolete Management
- ✓ Cost Control Management
- ✓ Shortage Management
- ✓ Alternative Solution
- ✓ Excess Inventory Management