

REVISIONS BP

DO NOT SCALE FROM THIS PRINT

NOTES:

1. MAX ALLOWABLE BOW: .005 INCH/INCH.
2. MIN TERMINAL PUSHOUT FORCE: 2 lbs.
3. MAX PIN ROTATION IN BODY: 2°.
4. MAX CUT FLASH: .010
5. TUBE POSITIONS 8-50 ONLY. POSITIONS 1-7 TO BE BULK PACKAGED.
6. NOTE DELETED.

DIMENSIONS ARE IN INCHES		UNLESS OTHERWISE NOTED		TOLERANCES ARE:		TITLE:	DWG NO:
ONE PLACE DECIMALS ± .1	TWO PLACE DECIMALS ± .01	THREE PLACE DECIMALS ± .005	FOUR PLACE DECIMALS ± .0020	ANGLES ± 2°		TERMINAL MICRO STRIP	TMS-1XX-XX-XX-X-XX-XXX
							SHEET 1 OF 1

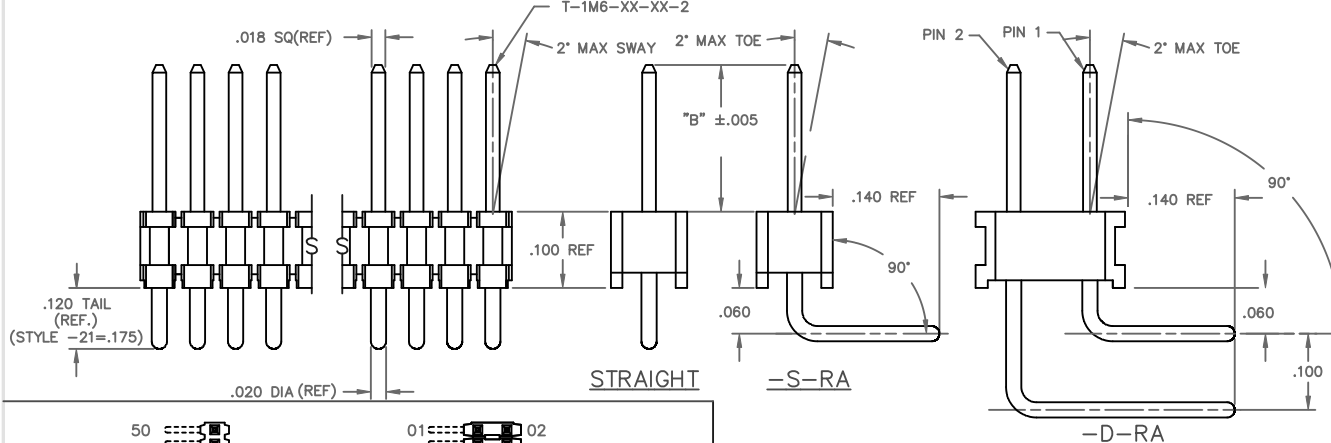
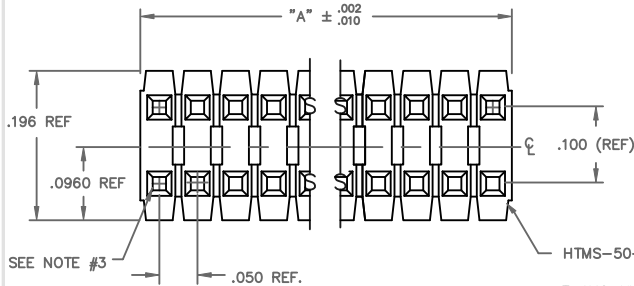
TMS-1XX-XX-XX-X-XX-XXX

OPTION  
-POLARIZING SPECIFICATION  
XXX INDICATES POS. TO BE OMITTED  
(SEE FIG. 1)  
OPTION  
-RA: RIGHT ANGLE (SEE TABLE 1)  
(SINGLE & DOUBLE RA AVAILABLE  
IN STYLE -01, -02, & -03 ONLY)

BODY SPECIFICATION  
-S: SINGLE (USE HTMS-50-S)  
-D: DOUBLE (USE HTMS-50-D)

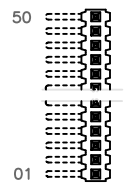
PLATING SPECIFICATION

- G: 10μ" GOLD IN CONTACT AREA, 10μ" GOLD ON TAIL
- T: MATTE TIN CONTACT AND TAIL
- ONLY AVAILABLE ON LEAD STYLES -01, -02, -51 AND -52.
- S: 30μ" SELECTIVE GOLD IN CONTACT AREA, MATTE TIN ON TAIL
- F: 3μ" FLASH GOLD IN CONTACT AREA, MATTE TIN ON TAIL
- H: 30μ" HEAVY GOLD IN CONTACT AREA, 3μ" GOLD ON TAIL
- FM: 3μ" SELECTIVE FLASH GOLD IN CONTACT AREA, MATTE TIN ON TAIL
- SM: 30μ" SELECTIVE GOLD IN CONTACT AREA, MATTE TIN ON TAIL
- TM: MATTE TIN CONTACT AND TAIL
- ONLY AVAILABLE ON LEAD STYLES -01, -02, -51 AND -52.
- L: 10μ" LIGHT SELECTIVE GOLD IN CONTACT AREA, MATTE TIN ON TAIL

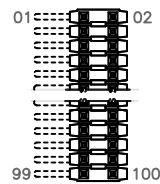


LENGTH	"L"	CONTACT AREA
-01	.440	.140
-02	.410	.140
-03	.610	.190
-04	.505	.190
-05	.705	.190
-12	.425	.165
-13	.625	.190
-14	.555	.190
-15	.755	.190
-16	.825	.190
-17	.320	.060
-18	.450	.190
-19	.650	.190
-21	.505	.190
-25	.330	.060
-26	.373	.075
-27	.398	.100
-28	1.050	.190

\* REF FOR PIN LENGTH



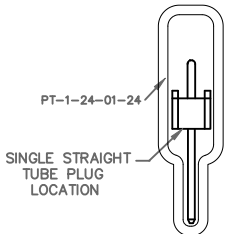
SINGLE ROW TOP VIEW



DOUBLE ROW TOP VIEW

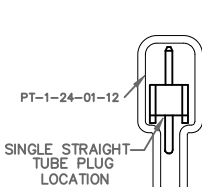
FIG 1

TUBE VIEW  
SEE TABLE 3 & NOTE 5



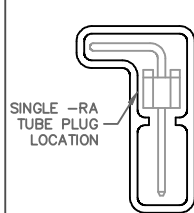
SINGLE STRAIGHT TUBE PLUG LOCATION

TUBE VIEW  
SEE TABLE 3 & NOTE 5



SINGLE STRAIGHT TUBE PLUG LOCATION

TUBE VIEW  
SEE TABLE 3 & NOTE 5



SINGLE -RA TUBE PLUG LOCATION

PACKAGING TUBE- TABLE 3

BODY STYLE	LEAD STYLE	TUBE	PLUG	
TMS-DOUBLE STRAIGHT STYLES	-01,-21, -51,-52	PT-1-24-01-22	TP-03	
	-02	PT-1-24-01-95	TP-03	
	-53	PT-1-24-02-66	TP-03	
	-55,-56	PT-1-24-01-29	TP-03	
	-54	PT-1-24-02-46	TP-03	
	-57	PT-1-24-02-25	TP-03	
	-58,-59	PT-1-24-16-29	TP-07	
	-60	PT-1-24-18-29	TP-07	
	TMS-SINGLE STRAIGHT STYLES	-01	PT-1-24-01-24	TP-24
		-21	PT-1-24-02-29	TP-24
-58,-59,-60		PT-1-24-10-03	TP-33	
-02		PT-1-24-01-12	TP-12	
-51,-52		PT-1-24-01-66	TP-24	
-53,-54, -55,-56		PT-1-24-02-03	TP-24	
-57		PT-1-24-10-03	TP-33	
TMS-DOUBLE RIGHT ANGLE		-01,-02,-03	PT-1-24-02-66	TP-03
		-01,-02,-03	PT-1-24-01-66	TP-24

STRAIGHT OPTION		TABLE 1 RIGHT ANGLE OPTION			ALL
LEAD STYLE	TERMINAL SPEC.	LEAD STYLE	PIN #1	PIN #2	"B"
-01	T-1M6-18-XX-2	-01	T-1M6-14-XX-2	T-1M6-15-XX-2	.230
-02	T-1M6-17-XX-2	-02	T-1M6-12-XX-2	T-1M6-13-XX-2	.100
-03	N/A	-03	T-1M6-18-XX-2	T-1M6-19-XX-2	.125
-21	T-1M6-21-XX-2	-21	N/A	N/A	.230
-51	T-1M6-02-XX-2	-51	N/A	N/A	.190
-52	T-1M6-12-XX-2	-52	N/A	N/A	.205
-53	T-1M6-04-XX-2	-53	N/A	N/A	.285
-54	T-1M6-14-XX-2	-54	N/A	N/A	.335
-55	T-1M6-03-XX-2	-55	N/A	N/A	.390
-56	T-1M6-13-XX-2	-56	N/A	N/A	.405
-57	T-1M6-19-XX-2	-57	N/A	N/A	.430
-58	T-1M6-05-XX-2	-58	N/A	N/A	.485
-59	T-1M6-15-XX-2	-59	N/A	N/A	.535
-60	T-1M6-16-XX-2	-60	N/A	N/A	.605

MATERIAL:  
INSULATOR:  
LCP UL94 V-0  
COLOR: BLACK  
TERMINAL:  
PHOSPHOR BRONZE

**samtec**  
520 PARK EAST BLVD. NEW ALBANY, INDIANA 47151-1147  
PHONE (812) 944-6733 P.O. BOX 1147  
CODE 55322

MADE BY: PURVIS 8-13-87  
CHECKED BY: WILLIAMS 10-21-87

ENG. APPROVAL  
TMS-1XX-XX-XX-X-XX-XXX  
SHEET 1 OF 1

PROPRIETARY NOTE  
THIS DOCUMENT CONTAINS CONFIDENTIAL AND PROPRIETARY INFORMATION AND IS THE PROPERTY OF SAMTEC CORPORATION. IT IS TO BE KEPT SECRET AND NOT TO BE REPRODUCED, COPIED, OR DISCLOSED IN ANY MANNER WITHOUT THE WRITTEN PERMISSION OF SAMTEC CORPORATION. ANY UNAUTHORIZED REPRODUCTION OR DISCLOSURE OF THIS INFORMATION IS STRICTLY PROHIBITED AND WILL BE PROSECUTED TO THE FULL EXTENT OF THE LAW.

## Looking for pricing, stock, or lifecycle information?

Click below to explore more details on WIN SOURCE:

 [View TMS-103-01-L-S on WIN SOURCE](#)

 [Samtec Inc. Information](#)

## Optimize Your Supply Chain with WIN SOURCE Solutions

-  Global Sourcing Solution
-  Obsolete Management
-  Cost Control Management
-  Shortage Management
-  Alternative Solution
-  Excess Inventory Management