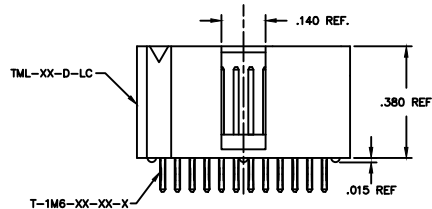
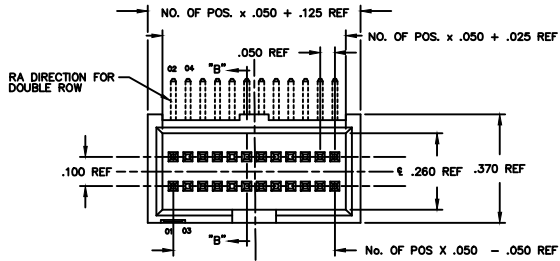


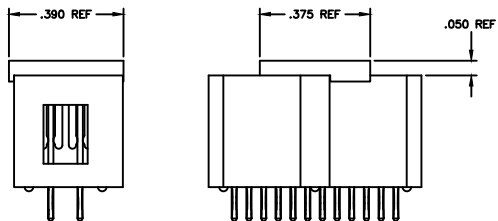
REV AK

Do not scale
from this print

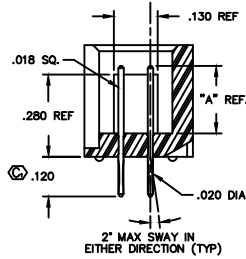


-P
PICK & PLACE PAD

NOTE: LOCATING NOTCH ON PAD TO BE PRESSED AGAINST MIDDLE STANDOFF ON BODY.

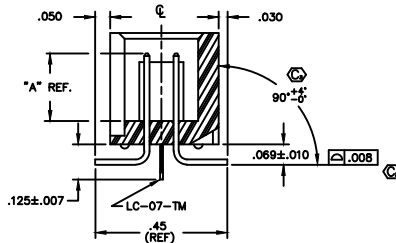


STRAIGHT



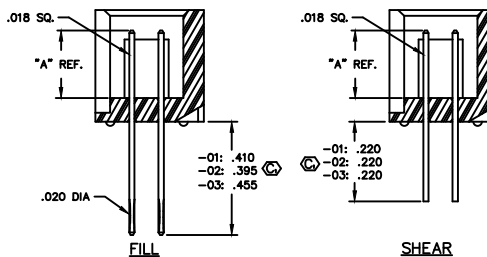
SECTION "B-B"

SURFACE MOUNT



SECTION "B-B"

IN PROCESS



FILL

SHEAR

ONE PLACE DECIMALS ±.1 TWO PLACE DECIMALS ±.01	UNLESS OTHERWISE NOTED THREE PLACE DECIMALS ±.005 FOUR PLACE DECIMALS ±.0020	TOLERANCES ARE: ANGLES ±.2°	TITLE: TML ASSEMBLY	DWG NO: TML-1XX-XX-XX-X-XX-XXX SHEET 1 of 1
---------------------------------------------------	------------------------------------------------------------------------------------	--------------------------------	------------------------	---------------------------------------------------

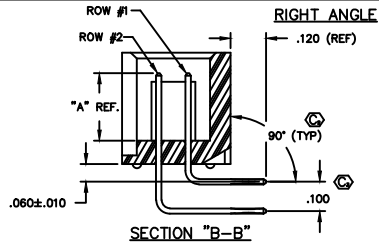
TML-1XX-XX-XX-X-XX-XXX

- NO. OF POSITIONS
-05 THRU -50
LEAD STYLE
SEE TABLE 1
PLATING SPECIFICATION
- G: GOLD (USE T-1M6-XX-G-2)
 - T: TIN (USE T-1M6-XX-T-2)
 - S: HEAVY GOLD SELECTIVE, MATTE TIN TAIL (USE T-1M6-XX-S-2)
 - F: FLASH GOLD SELECTIVE, MATTE TIN TAIL (USE T-1M6-XX-F-2)
 - H: HEAVY GOLD (USE T-1M6-XX-H-2)
 - SM: HEAVY GOLD SELECTIVE, MATTE TIN TAIL (USE T-1M6-XX-S-2)
 - TM: MATTE TIN (USE T-1M6-XX-T-2)
 - FM: FLASH GOLD SELECTIVE, MATTE TIN TAIL (USE T-1M6-XX-F-2)
 - L: LIGHT GOLD SELECTIVE, MATTE TIN TAIL (USE T-1M6-XX-L-2)
- OPTION #2
-XXX: INDICATES POSITION OMITTED FOR POLARIZED ASSEMBLY
-LC: LOCKING CLIP (AVAILABLE FOR DOUBLE ROW SURFACE MOUNT ONLY) (USE LC-07-TM)
-P: PICK & PLACE PAD (USE PFP-22) (8 POS MIN)
- OPTION #1
BLANK: STRAIGHT
-RA: RIGHT ANGLE
-SM: SURFACE MOUNT
- ROW SPECIFICATION
-D: DOUBLE (USE TML-XX-D)

LEAD STYLE	"A"	STRAIGHT	RIGHT ANGLE		SURFACE MOUNT (SINGLE & DOUBLE ROW)
			ROW #1 (SINGLE ROW)	ROW #2	
-01	.120	T-1M6-17-XX-2	T-1M6-04-XX-2	T-1M6-05-XX-2	T-1M6-03-XX-2
-02	.230	T-1M6-12-XX-2	T-1M6-13-XX-2	T-1M6-16-XX-2	T-1M6-05-XX-2
-03	.170	T-1M6-26-XX-2	T-1M6-14-XX-2	T-1M6-15-XX-2	T-1M6-05-XX-2

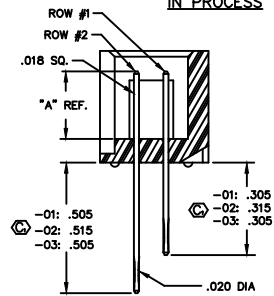
OPTIONS	PACKAGING TUBE	PLUG
-D-SM	PT-1-24-01-08	TP-13
-D-SM-LC, -D-SM-LC-P	PT-1-24-02-08	TP-13
-D-RA	PT-TM001-RA	TP-28

NOTE:
1. Ⓞ REPRESENTS A CRITICAL DIMENSION.

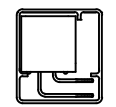


SECTION "B-B"

IN PROCESS



-RA PARTS TO BE TUBED WITH #1 PIN IN LINE WITH ARROW ON TUBE



-D-RA
PACKAGING VIEW

samtec

520 PARK EAST BLVD. NEW ALBANY, INDIANA 47150
 PHONE (812) 944-8733 P.O. BOX 1147
 CODE 56322

DATE BY: BRYANT 8-7-90
 CHECKED BY: ECKERT
 DEM TML-1XX-XX-XX-X-XX-XXX

PROPRIETARY NOTE
 THE INFORMATION CONTAINED HEREIN IS THE PROPERTY OF SAMTEC CORPORATION AND IS TO BE USED FOR THE SPECIFIC PURPOSE AND APPLICATION FOR WHICH IT WAS PROVIDED. IT IS NOT TO BE REPRODUCED OR TRANSMITTED IN ANY FORM OR BY ANY MEANS, ELECTRONIC OR MECHANICAL, INCLUDING PHOTOCOPYING, RECORDING, OR BY ANY INFORMATION STORAGE AND RETRIEVAL SYSTEM, WITHOUT THE WRITTEN CONSENT OF SAMTEC CORP.

Looking for pricing, stock, or lifecycle information?

Click below to explore more details on WIN SOURCE:

 [View TML-110-02-G-D-SM on WIN SOURCE](#)

 [Samtec Inc. Information](#)

Optimize Your Supply Chain with WIN SOURCE Solutions

-  Global Sourcing Solution
-  Obsolete Management
-  Cost Control Management
-  Shortage Management
-  Alternative Solution
-  Excess Inventory Management