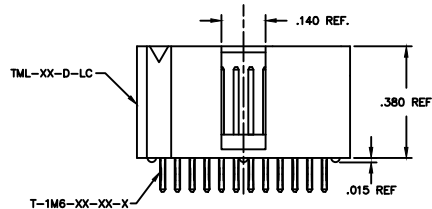
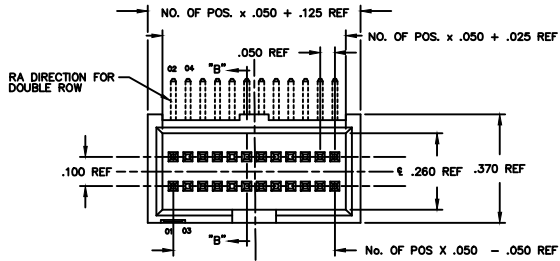


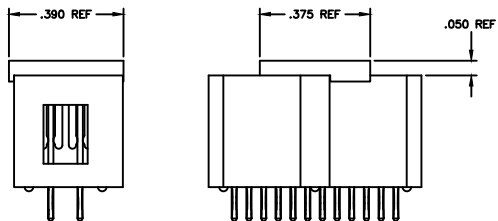
REV AK

Do not scale from this print



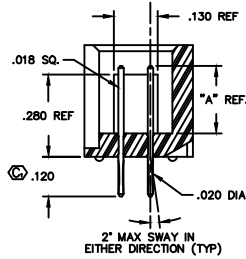
-P  
 PICK & PLACE PAD

NOTE: LOCATING NOTCH ON PAD TO BE PRESSED AGAINST MIDDLE STANDOFF ON BODY.



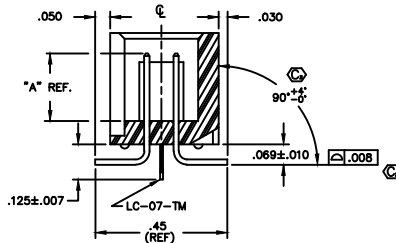
**PROPRIETARY NOTE**  
 THE INFORMATION CONTAINED HEREIN IS UNCLASSIFIED EXCEPT WHERE SHOWN OTHERWISE. IT IS THE PROPERTY OF SAMTEC AND IS LOANED TO YOUR ORGANIZATION. IT IS TO BE USED ONLY FOR THE PURPOSES AUTHORIZED BY YOUR CONTRACT. IT IS NOT TO BE REPRODUCED, COPIED, OR DISSEMINATED IN ANY MANNER WITHOUT THE WRITTEN CONSENT OF SAMTEC INC.

STRAIGHT



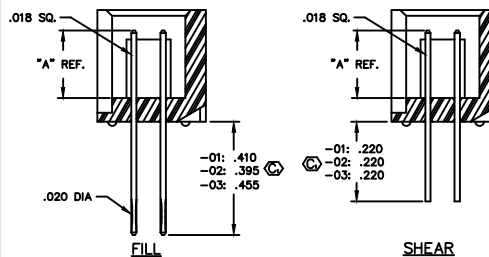
SECTION "B-B"

SURFACE MOUNT



SECTION "B-B"

IN PROCESS



FILL

SHEAR

DIMENSIONS ARE IN INCHES		UNLESS OTHERWISE NOTED		TOLERANCES ARE:		TITLE:	DWG NO.:
ONE PLACE DECIMALS ± .1	TWO PLACE DECIMALS ± .01	THREE PLACE DECIMALS ± .005	FOUR PLACE DECIMALS ± .0020	ANGLES ± 2°		TML ASSEMBLY	TML-1XX-XX-XX-X-XX-XXX
							SHEET 1 of 1

TML-1XX-XX-XX-X-XX-XXX

NO. OF POSITIONS  
 -05 THRU -50

LEAD STYLE  
 SEE TABLE 1

PLATING SPECIFICATION

- G: GOLD (USE T-1M6-XX-G-2)
- T: TIN (USE T-1M6-XX-T-2)
- S: HEAVY GOLD SELECTIVE, MATTE TIN TAIL (USE T-1M6-XX-S-2)
- F: FLASH GOLD SELECTIVE, MATTE TIN TAIL (USE T-1M6-XX-F-2)
- H: HEAVY GOLD (USE T-1M6-XX-H-2)
- SM: HEAVY GOLD SELECTIVE, MATTE TIN TAIL (USE T-1M6-XX-S-2)
- TM: MATTE TIN (USE T-1M6-XX-T-2)
- FM: FLASH GOLD SELECTIVE, MATTE TIN TAIL (USE T-1M6-XX-F-2)
- L: LIGHT GOLD SELECTIVE, MATTE TIN TAIL (USE T-1M6-XX-L-2)

OPTION #2

- XXX: INDICATES POSITION OMITTED FOR POLARIZED ASSEMBLY
- LC: LOCKING CLIP (AVAILABLE FOR DOUBLE ROW SURFACE MOUNT ONLY) (USE LC-07-TM)
- P: PICK & PLACE PAD (USE PFP-22) (8 POS MIN)

OPTION #1

- BLANK: STRAIGHT
- RA: RIGHT ANGLE
- SM: SURFACE MOUNT

ROW SPECIFICATION

- D: DOUBLE (USE TML-XX-D)

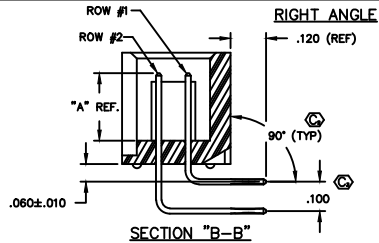
LEAD STYLE	"A"	STRAIGHT	RIGHT ANGLE		SURFACE MOUNT (SINGLE & DOUBLE ROW)
			ROW #1 (SINGLE ROW)	ROW #2	
-01	.120	T-1M6-17-XX-2	T-1M6-04-XX-2	T-1M6-05-XX-2	T-1M6-03-XX-2
-02	.230	T-1M6-12-XX-2	T-1M6-13-XX-2	T-1M6-16-XX-2	T-1M6-05-XX-2
-03	.170	T-1M6-26-XX-2	T-1M6-14-XX-2	T-1M6-15-XX-2	T-1M6-05-XX-2

TABLE 2

OPTIONS	PACKAGING TUBE	PLUG
-D-SM	PT-1-24-01-08	TP-13
-D-SM-LC, -D-SM-LC-P	PT-1-24-02-08	TP-13
-D-RA	PT-TM001-RA	TP-28

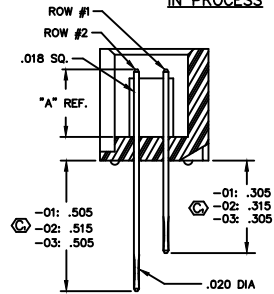
NOTE:

- 1. Ⓞ REPRESENTS A CRITICAL DIMENSION.

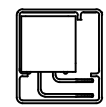


SECTION "B-B"

IN PROCESS



-RA PARTS TO BE TUBED WITH #1 PIN IN LINE WITH ARROW ON TUBE



-D-RA  
 PACKAGING VIEW

**samtec**

520 PARK EAST BLVD. NEW ALBANY, INDIANA 47150  
 PHONE (812) 944-8733 P.O. BOX 1147  
 CODE 56322

DATE BY: BRYANT 8-7-90  
 CHECKED BY: ECKERT  
 DEM TML-1XX-XX-XX-X-XX-XXX

## Looking for pricing, stock, or lifecycle information?

Click below to explore more details on WIN SOURCE:

 [View TML-110-02-G-D-SM-006 on WIN SOURCE](#)

 [Samtec Inc. Information](#)

## Optimize Your Supply Chain with WIN SOURCE Solutions

-  Global Sourcing Solution
-  Obsolete Management
-  Cost Control Management
-  Shortage Management
-  Alternative Solution
-  Excess Inventory Management