



**THE DATASHEET OF
TMM-110-02-L-D**



THROUGH-HOLE LOW PROFILE HEADER



(2.00 mm) .0787" PITCH • TMM SERIES

TMM
Board Mates:
 CLT, SQT, SQW, ESQT,
 TLE, SMM, MMS
Cable Mates:
 TCSD

SPECIFICATIONS

Insulator Material:
 Black Liquid Crystal Polymer
Terminal Material:
 Phosphor Bronze
Plating:
 Sn or Au over
 50 μ" (1.27 μm) Ni
Current Rating (SMM/TMM):
 3.2 A per row
 (2 pins powered)
Operating Temp Range:
 -55 °C to +105 °C with Tin;
 -55 °C to +125 °C with Gold
Voltage Rating:
 281 VAC mated with SQW;
 250 VAC mated with SQT

PROCESSING

Lead-Free Solderable:
 Yes

APPLICATION



Retention Clip Option (-RC)

ALSO AVAILABLE

MOQ Required

Other Platings



Note:
 Some lengths, styles and options are non-standard, non-returnable.

| | | | | | | |
|------------|----------|-------------------------|-------------------|-----------------------|-------------------|---------------------|
| TMM | 1 | NO. PINS PER ROW | LEAD STYLE | PLATING OPTION | ROW OPTION | OTHER OPTION |
|------------|----------|-------------------------|-------------------|-----------------------|-------------------|---------------------|

02 thru 50

Specify LEAD STYLE from chart

-F
 = Gold flash on post, Matte Tin on tail

-L
 = 10 μ" (0.25 μm) Gold on post, Matte Tin on tail

-S
 = 30 μ" (0.76 μm) Gold on post, Matte Tin on tail

-T
 = Matte Tin

-S
 = Single Row

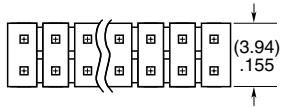
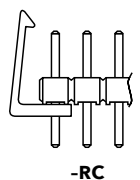
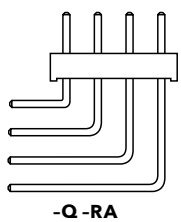
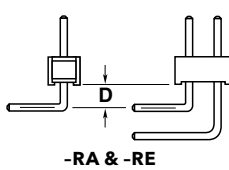
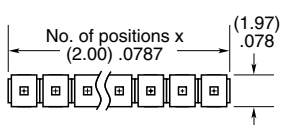
-D
 = Double Row

-Q
 = Four Row

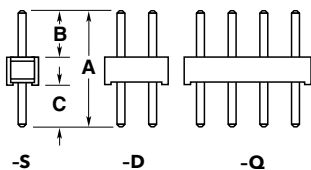
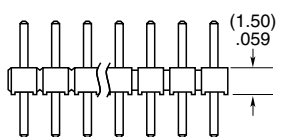
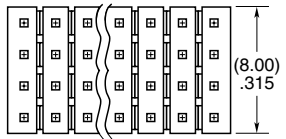
-RA & -RE
 = Right-angle (Lead Style -01 only) (2 positions minimum, -Q row)

-RC
 = Retention Clip (Mates with TCSD) (Double row only, 4 positions minimum, only available -06 lead style)

"XXX"
 = Polarized Position (Specify position of omitted pin)





| OPTION | D |
|--------|-------------|
| -RA | (1.27) .050 |
| -RE | (3.56) .140 |



| LEAD STYLE | A | B | C |
|------------|-------------|-------------|-------------|
| -01 | | (3.20) .126 | (3.50) .138 |
| -02 | (8.20) .323 | (3.70) .146 | (3.00) .118 |
| -03 | | (4.00) .158 | (2.70) .106 |
| -04 | (5.69) .224 | (1.91) .075 | (2.29) .090 |
| -05 | (5.43) .214 | (1.65) .065 | |
| -06 | (9.58) .377 | (3.20) .126 | (4.88) .192 |

Looking for pricing, stock, or lifecycle information?

Click below to explore more details on WIN SOURCE:

-  [View TMM-110-02-L-D on WIN SOURCE](#)
-  [Samtec Inc. Information](#)

Optimize Your Supply Chain with WIN SOURCE Solutions

-  Global Sourcing Solution
-  Obsolete Management
-  Cost Control Management
-  Shortage Management
-  Alternative Solution
-  Excess Inventory Management