



**THE DATASHEET OF
TMM-110-01-L-S**



THROUGH-HOLE LOW PROFILE HEADER



(2.00 mm) .0787" PITCH • TMM SERIES

TMM
Board Mates:
 CLT, SQT, SQW, ESQT,
 TLE, SMM, MMS
Cable Mates:
 TCSD

SPECIFICATIONS

Insulator Material:
 Black Liquid Crystal Polymer
Terminal Material:
 Phosphor Bronze
Plating:
 Sn or Au over
 50 μ" (1.27 μm) Ni
Current Rating (SMM/TMM):
 3.2 A per row
 (2 pins powered)
Operating Temp Range:
 -55 °C to +105 °C with Tin;
 -55 °C to +125 °C with Gold
Voltage Rating:
 281 VAC mated with SQW;
 250 VAC mated with SQT

PROCESSING

Lead-Free Solderable:
 Yes

APPLICATION



Retention Clip Option (-RC)

ALSO AVAILABLE

MOQ Required

Other Platings



Note:
 Some lengths, styles and options are non-standard, non-returnable.

TMM	- 1	NO. PINS PER ROW	LEAD STYLE	PLATING OPTION	ROW OPTION	OTHER OPTION
-----	-----	------------------	------------	----------------	------------	--------------

02 thru 50

Specify LEAD STYLE from chart

-F
 = Gold flash on post, Matte Tin on tail

-L
 = 10 μ" (0.25 μm) Gold on post, Matte Tin on tail

-S
 = 30 μ" (0.76 μm) Gold on post, Matte Tin on tail

-T
 = Matte Tin

-S
 = Single Row

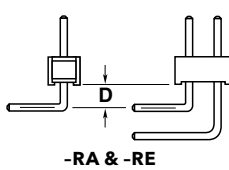
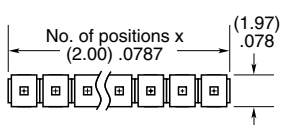
-D
 = Double Row

-Q
 = Four Row

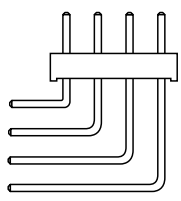
-RA & -RE
 = Right-angle (Lead Style -01 only) (2 positions minimum, -Q row)

-RC
 = Retention Clip (Mates with TCSD) (Double row only, 4 positions minimum, only available -06 lead style)

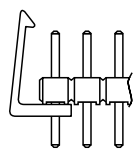
-"XXX"
 = Polarized Position (Specify position of omitted pin)



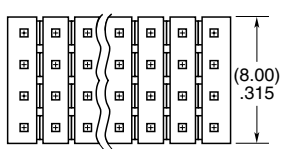
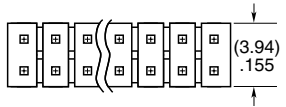
-RA & -RE



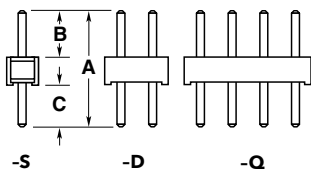
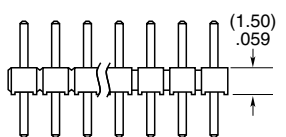
-Q-RA



-RC





OPTION	D
-RA	(1.27) .050
-RE	(3.56) .140



LEAD STYLE	A	B	C
-01		(3.20) .126	(3.50) .138
-02	(8.20) .323	(3.70) .146	(3.00) .118
-03		(4.00) .158	(2.70) .106
-04	(5.69) .224	(1.91) .075	(2.29) .090
-05	(5.43) .214	(1.65) .065	
-06	(9.58) .377	(3.20) .126	(4.88) .192

Looking for pricing, stock, or lifecycle information?

Click below to explore more details on WIN SOURCE:

-  [View TMM-110-01-L-S on WIN SOURCE](#)
-  [Samtec Inc. Information](#)

Optimize Your Supply Chain with WIN SOURCE Solutions

-  Global Sourcing Solution
-  Obsolete Management
-  Cost Control Management
-  Shortage Management
-  Alternative Solution
-  Excess Inventory Management