



THE DATASHEET OF
8637-0-15-15-21-27-10-0



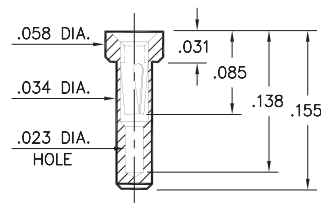
PIN RECEPTACLES

**FOR .015" - .020" DIAMETER PINS (#11 CONTACT)
AND .015" - .022" DIAMETER PINS (#21 CONTACT)
(SEE SPECIFIC CONTACT RANGE ON PAGE 251)**

0548

0548-0-15-XX-21-XX-10-0

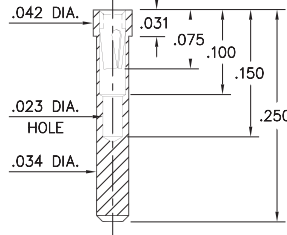
Solder mount in .036 min. mounting hole
Also available on 16mm wide carrier tape:
1,900 parts per 13" reel
See page 194.3 for Tape & Reel details



8975

8975-0-15-XX-21-XX-10-0

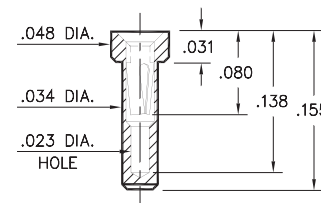
Solder mount in .036 min. mounting hole
Also available on 24mm wide carrier tape:
1,200 parts per 13" reel
See page 194.3 for Tape & Reel details



3016

3016-0-15-XX-21-XX-10-0

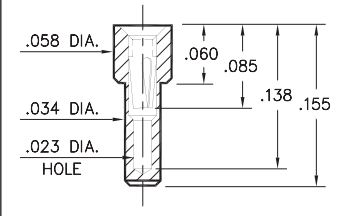
Solder mount in .036 min. mounting hole
Also available on 16mm wide carrier tape:
1,900 parts per 13" reel
See page 194.3 for Tape & Reel details



9548

9548-0-15-XX-21-XX-10-0

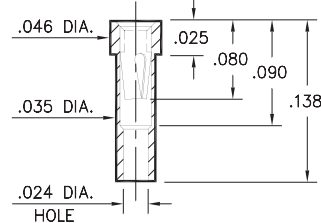
Solder mount in .036 min. mounting hole



8637

8637-0-15-XX-21-XX-10-0

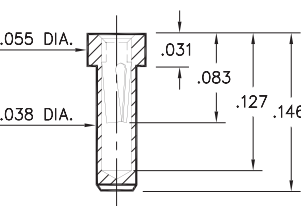
Solder mount in .037 min. mounting hole
Also available on 16mm wide carrier tape:
2,000 parts per 13" reel
See page 194.3 for Tape & Reel details



1407

1407-0-15-XX-11-XX-10-0

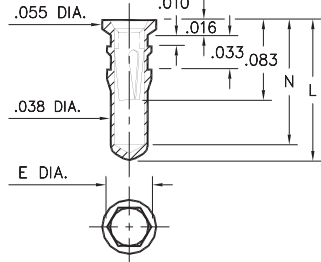
Solder mount in .040 min. mounting hole
Also available on 16mm wide carrier tape:
1,500 parts per 13" reel
See page 194.2 for Tape & Reel details



0553/4553/8553

X553-X-15-XX-X1-XX-10-0

Also available on 16mm wide carrier tape:
1,580 parts per 13" reel
See page 194.2 for Tape & Reel details



Hex press-fit in .041 plated through-hole
for Part Numbers **0553-X** and **8553-0** ONLY

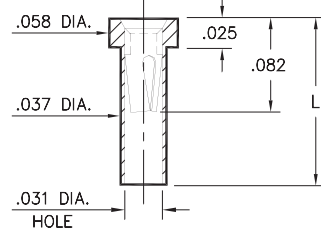
Hex press-fit in .042 plated through-hole
for Part Number **4553-0** ONLY

Basic Part Number	Hex Dia. E	Length L	Depth N
0553-1	.044	.140	.124
0553-2	.044	.170	.154
0553-3	.044	.282	.266
4553-0	.045	.170	.154
8553-0	.044	.245	.229

0566

0566-X-15-XX-21-XX-10-0

Solder mount in .039 min. mounting hole
Also available on 16mm wide carrier tape:
See chart for details
See page 194.3 for Tape & Reel details

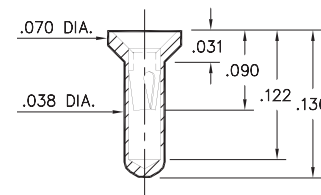


Basic Part Number	Length L	Parts per 13" Reel
0566-1	.083	3,000
0566-2	.138	2,100

0442

0442-0-15-XX-11-XX-10-0

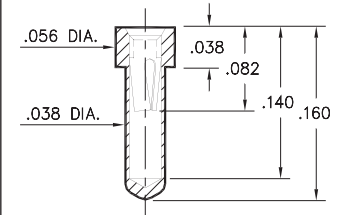
Solder mount in .040 min. mounting hole



0554

0554-0-15-XX-21-XX-10-0

Solder mount in .040 min. mounting hole
Also available on 16mm wide carrier tape:
1,900 parts per 13" reel
See page 194.3 for Tape & Reel details



SPECIFICATIONS:

Shell Material: Brass Alloy 360, 1/2 Hard

Contact Material: Beryllium Copper Alloy 172, HT

Dimensions: Inches

Tolerances On: Lengths: ±.005

Diameters: ±.002

Angles: ±2°



ORDER CODE: XXXX - X - XX - XX - XX - XX - XX - 0

BASIC PART #

SPECIFY SHELL FINISH:

- 01 200 μ" TIN/LEAD OVER NICKEL
- ◆ 80 200 μ" TIN OVER NICKEL (RoHS)
- ◆ 15 10 μ" GOLD OVER NICKEL (RoHS)

SPECIFY CONTACT FINISH:

- 02 100 μ" TIN/LEAD OVER NICKEL
- ◆ 84 100 μ" TIN OVER NICKEL (RoHS)
- ◆ 27 30 μ" GOLD OVER NICKEL (RoHS)

SELECT CONTACT:

#11 or #21 CONTACT (DATA ON PAGE 251)

(For alternate contact choices, see group A on page 248)



Looking for pricing, stock, or lifecycle information?

Click below to explore more details on WIN SOURCE:

- ⊖ [View 8637-0-15-15-21-27-10-0 on WIN SOURCE](#)
- ⊖ [Mill-Max Manufacturing Corp. Information](#)

Optimize Your Supply Chain with WIN SOURCE Solutions

- ✓ Global Sourcing Solution
- ✓ Obsolete Management
- ✓ Cost Control Management
- ✓ Shortage Management
- ✓ Alternative Solution
- ✓ Excess Inventory Management