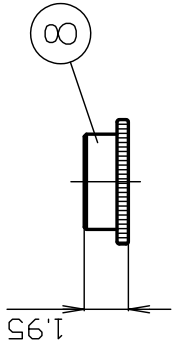
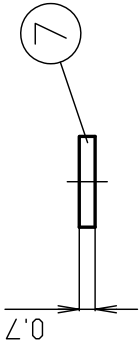
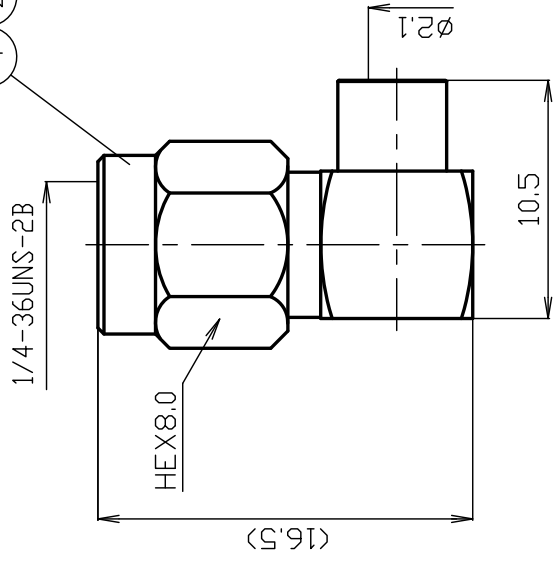




# THE DATASHEET OF SMA-LP-141



① ② ③ ④ ⑤



\*1: STAINLESS STEEL  
\*2: PASSIVATE

8	COVER	BRASS	1	Ni	
7	INSULATOR B	PTFE	1	--	
6	CENTER PIN	BRASS	1	Au	
5	BODY	BRASS	1	Au	
4	HOLDING RING	*1	1	--	
3	GASKET	SILICONE	1	--	
2	INSULATOR A	PTFE	1	--	
1	COUPLING NUT	*1	1	*2	
NO.	DESCRIPTION	MATERIAL	Q'TY	FINISH	REMARK

SCALE 3/1

UNIT mm

DATE 2023.05.11

DRAWN 渡邊 直弘

CHECKED 檜 澤

APP

'23.05.11

'23.05.11

'23

PROJECTION



株式 70

# PRODUCT SPECIFICATION

Part number: SMA-LP-141

No. 1150709

Drawing number: J-1152024





Nominal 1 Standard JEITA RC-5234  
 2 Voltage rating AC 500V  
 3 Frequency range 10GHz  
 4 Impedance 50Ω  
 5 Operating Temperature Range -40°C~+85°C



株式会社 トーコネ  
 TO-CONNE CO.,LTD.

	Test Items	Procedures/Test Method	Requirements
1 S T R U C T U R E	Design and Construction	Specified on relevant product drawing (Drawing number:J-1152024 )	No defects or abnormalities
	Materials		
	Finish		
4 E L E C T R I C A L	Insulation Resistance	DC 500V	5000 MΩ (Min.)
5	Withstand voltage	1 minute at AC 1500V	No defects or abnormalities
6	Contact resistance	The method of which, the voltage drop of the contact duration should not exceed about 1-kHz AC or 1mV DC	3mΩ (max.)
7	V.S.W.R	DC ~ 6GHz	1.3 (max)
8 M E C H A N I C A L	Compatibility	Mating with connector complying with the standard	No defects or abnormalities
9	Cable tensile strength	Axial tensile force of 245N or more	No defects or abnormalities
10	Engagement Force	When axial tensile force of 180N is applied	No defects or abnormalities
11	Cable group	0.141inch Semi-rigid Cable	

	REVISIONS	DATE
1		
2		
3		

Checked	Approved	Proof mark	Prepared
 三村 23.05.11	 山本 23.05.11	 水村 23.05.11	 渡邊 直弘 '23.05.11

GKQM-7

# SMA-LP-141 Cable Assembly Instructions

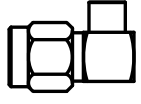
Cable group

0.141Semi-Rigid

All parts of the connector as shown

DRAWING NO. J-1152024

DRAWN	CHECKED	APPROVED	CONFIRMATION
渡邊 '23.05.11 直弘	槽 '23.05.11 澤	山 '23.05.11 本	三 '23.05.11 村



BODY

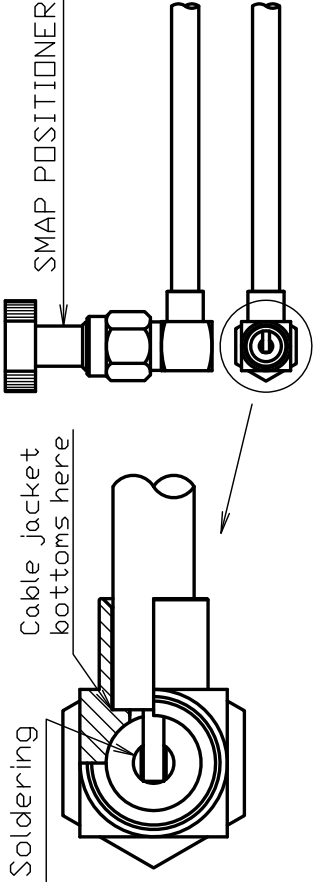
INSULATOR

Polish this part with sandpaper etc. will make it easier to solder between the cable and body.

1 Trim cable jacket to the dimensions



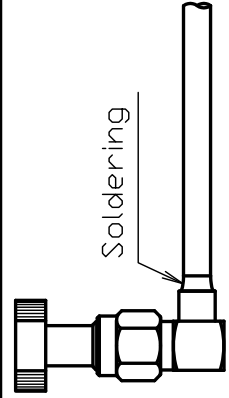
(mm)



ATTENTION

For semi-rigid cables, polish with sandpaper etc. will make the cable and body.

2 Mate with "SMAP POSITIONER" while soldering. Assemble cable into in connector body and Solder inner conductor center contact.  
\*Remove excess solder

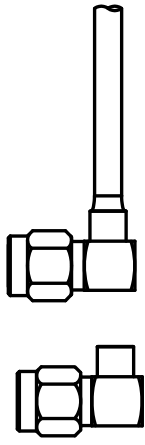


Soldering

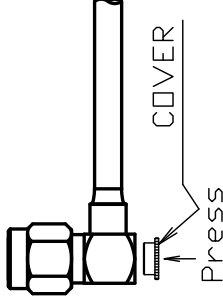
3 Solder cable to

ATTENTION

Solder evenly around the cable. Solder quickly to prevent being pushed out or the cable in due to thermal stress.



INSULATOR B




COVER

Press

4 Remove the "SMAP POSITIONER" and press fit the cover

## Looking for pricing, stock, or lifecycle information?

Click below to explore more details on WIN SOURCE:

 [View SMA-LP-141 on WIN SOURCE](#)

 [TYCLON Information](#)

## Optimize Your Supply Chain with WIN SOURCE Solutions

-  Global Sourcing Solution
-  Obsolete Management
-  Cost Control Management
-  Shortage Management
-  Alternative Solution
-  Excess Inventory Management