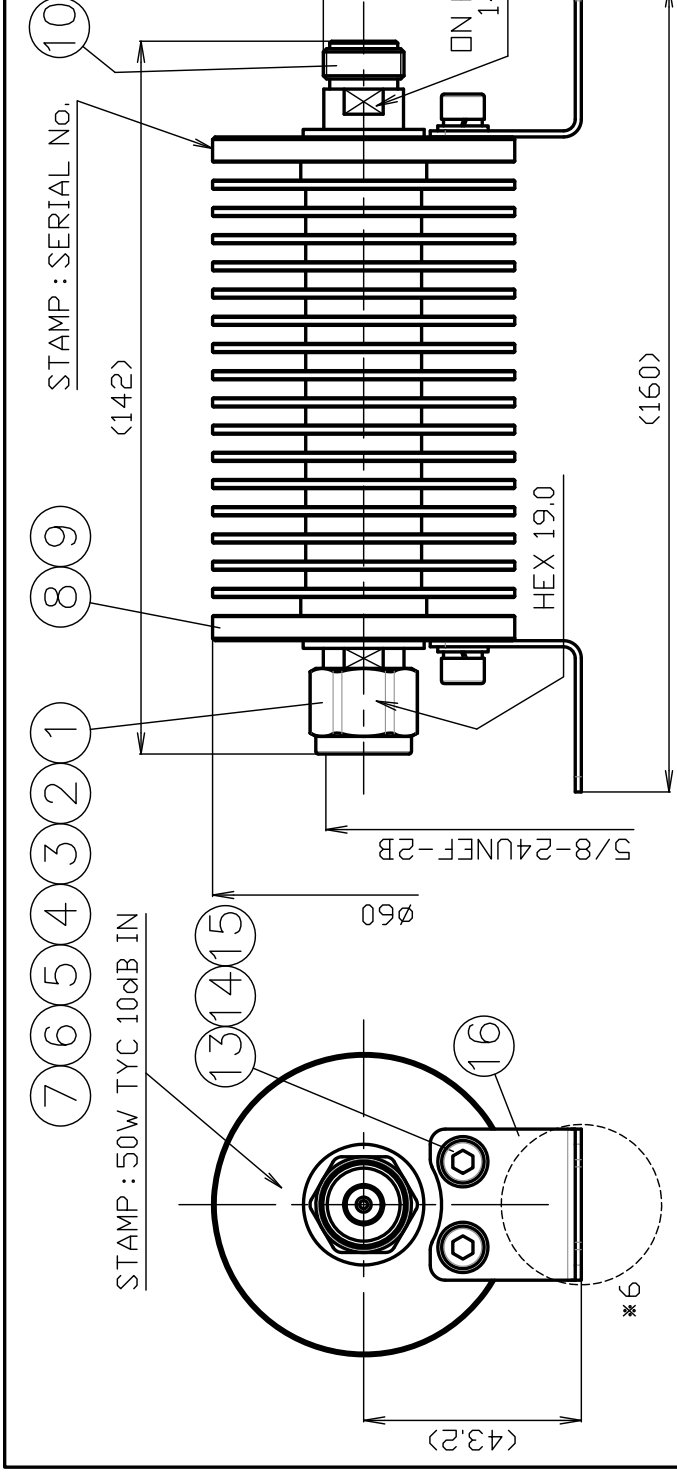


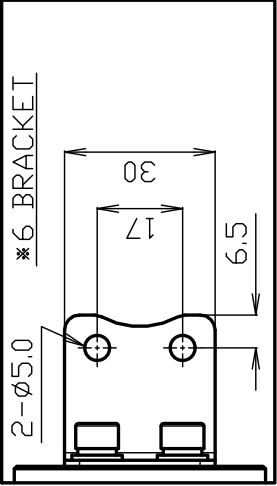


**THE DATASHEET OF
NPJ50AT6G50W-10DB**





- * 1: TERNARY PLATING
- * 2: ANODAIZING(BLACK)
- * 3: PASSIVATE
- * 4: STAINLESS STEEL
- * 5: PHOSPHOR BRONZE



| | | | | | | | |
|-----|----------------------|----------|------|--------|--------|-----------------------|-----------|
| 12 | INSULATOR B | PTFE | 1 | -- | 16 | BRACKET | * 4 |
| 11 | CENTER PIN B | * 5 | 1 | Au | 15 | WASHER | * 4 |
| 10 | BODY B | BRASS | 1 | * 1 | 14 | SPRING WASHER | * 4 |
| 9 | ATTENUATION TERMINAL | -- | 1 | -- | 13 | SOCKET HEAD CAP SCREW | * 4 |
| 8 | HEAT SINK | ALUMINUM | 1 | * 2 | ND. | DESCRIPTION | MATERIAL |
| 7 | O-RING | SILICONE | 2 | -- | SCALE | 2/3 | INSPECTED |
| 6 | INSULATOR A | PTFE | 1 | -- | | | 井 |
| 5 | CENTER PIN A | * 5 | 1 | Au | | | '23.12.19 |
| 4 | GASKET | SILICONE | 1 | -- | | | 出 |
| 3 | BODY A | BRASS | 1 | * 1 | UNIT | | |
| 2 | HOLDING RING | * 4 | 1 | -- | | | |
| 1 | COUPLING NUT | BRASS | 1 | * 1 | DATE | 2023.12.19 | |
| ND. | DESCRIPTION | MATERIAL | Q'TY | FINISH | REMARK | | |



株式会社
70-

PRODUCT SPECIFICATIONS

Part No. NPJ50AT6G50W-10dB

No. 0592411





DWG No. W-0596071

Nominal 1 Standard JIS C 5411
 2 Power handling 50W
 3 Frequency range 6GHz
 4 Impedance 50Ω
 5 [OPR]Temp-Range -45°C~+85°C





| | | Test Items | Procedures/Test method | Requirements |
|-------------|---------------|----------------------------------------|--------------------------------------------------------------|---------------------------------------|
| 1 2 3 | DESIGN | Design & construction | Specified on relevant product drawing (DWG No. W-0596071) | No defects or abnormalities |
| | | Materials | | |
| | | Finishes | | |
| 4 5 | ELECTRICAL | Attenuation | DC~6GHz | 10±0.8dB |
| | | V. S. W. R | DC~3GHz 3~6GHz | 1.2 (Max.) 1.3 (Max.) |
| 6 7 8 | MECHANICAL | Compatibility | Connecting with a standard-compliant connector | No defects or abnormalities |
| | | Tensile strength of coupling mechanism | At axial tensile force 300N | No defects or abnormalities |
| | | Connection nut tightening torque | 0.9~1.7N·m | |
| 9 | ENVIRONMENTAL | Waterproof | IPX7 | No water ingress inside the connector |
| | | | | |

| | Remarks | Date |
|---|---------|------|
| 1 | | |
| 2 | | |
| 3 | | |

| Checked | Approved | Inspected | Prepared |
|-----------------------------------------------------------------------------------------------------------|------------------------------------------------------------------------------------------------------------|-------------------------------------------------------------------------------------------------------------|----------------------------------------------------------------------------------------------------------------|
|  三 22.08.30 村 |  山 22.08.30 本 |  檜 22.08.30 澤 |  渡邊 '22,08,30 直弘 |

Looking for pricing, stock, or lifecycle information?

Click below to explore more details on WIN SOURCE:

-  [View NPJ50AT6G50W-10dB on WIN SOURCE](#)
-  [TYCLON Information](#)

Optimize Your Supply Chain with WIN SOURCE Solutions

-  Global Sourcing Solution
-  Obsolete Management
-  Cost Control Management
-  Shortage Management
-  Alternative Solution
-  Excess Inventory Management