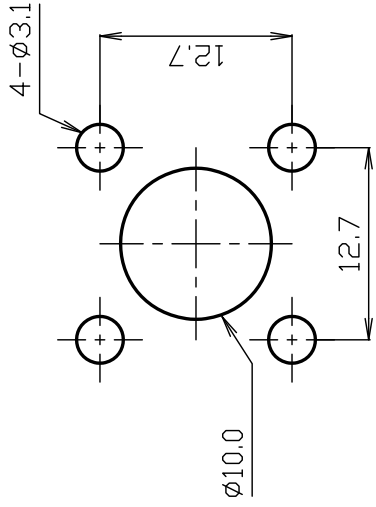
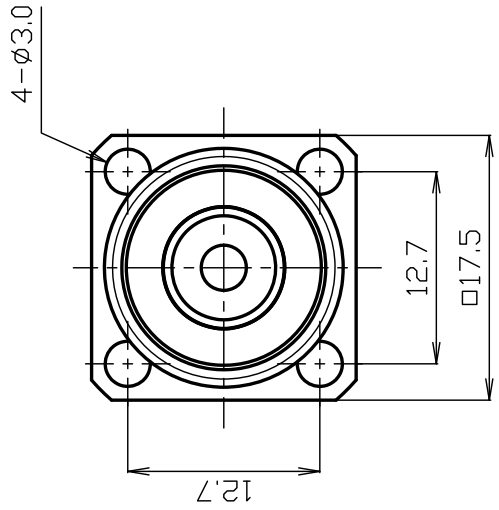




**THE DATASHEET OF
N-PJ-085**





MOUNTING HOLE

*1: PHOSPHOR BRONZE

7																			
6									SCALE	2/1									
5	BODY B	BRASS	1	Au															
4	O-RING	SILICONE	1	--															
3	INSULATOR	PTFE	1	--					UNIT	mm									
2	BODY A	BRASS	1	Ni															
1	CENTER PIN	*1	1	Au					DATE	2023.10.05									
NO.	DESCRIPTION	MATERIAL	Q'TY	FINISH	REMARK														

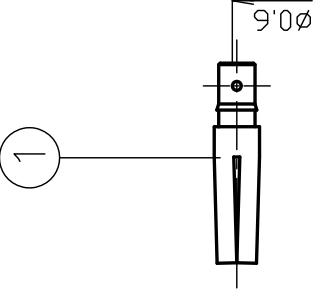
PROJECTION



株式会社 70-

DRAWN	渡邊 直弘	'23,10,05
CHECKED	檜澤	'23,10,05
APPR		'23,10,05

5/8-24UNEF-2A



PRODUCT SPECIFICATION

Part number: N-PJ-085

No. 0521386

Drawing number: J-0523105

Nominal 1 Standard JIS C 5411
 2 Voltage rating AC 500V
 3 Frequency range 10GHz
 4 Impedance 50Ω
 5 Operating Temperature Range -40°C~+85°C
 6 Operating Humidity Range 95%RH(Max.)
 ※No condensation



		Test Items	Test Method/Value	Remarks
1	E L E C T R I C A L	Insulation Resistance	1000MΩ(Min.) at DC 500V	
2		Withstand voltage	1 minute at AC 1000V	
3		Contact resistance	3mΩ (max.)	
4		V.S.W.R	DC~3GHz : 1.2(Max.)	
5	M E C H A N I C A L	Compatibility	No defects or abnormalities	Mating with connector complying with the standard
6		Cable tensile strength	98N(Min.)	At axial tensile force
7		Mounting strength	500N	At axial tensile force
8		Center contact captivation	0.98N(Min.)	With a standard pin gauge
9	O T H E R S	Cable group	0.085Semi-Rigid, 0.085Semi-Flex, RG-405/U	

※The structural shape is shown in the attached drawing (Drawing number: J-0523105)

	REVISIONS	DATE
1		
2		
3		

Checked	Approved	Proof mark	Prepared

GKQM-7

N-PJ-085 Cable Assembly Instructions

DRAWING NO. J-0523105

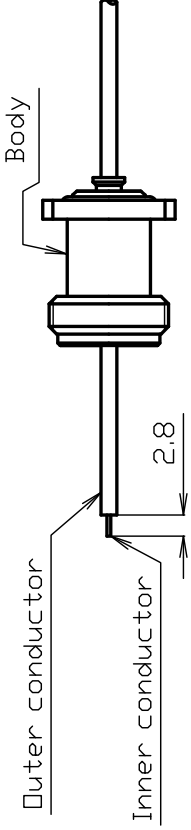
DRAWN	CHECKED	APPROVED	CONFIRMATION
渡邊 直弘 '23.10.05	檜 澤 '23.10.05	山 本 '23.10.05	三 村 '23.10.05



Cable group 0.085Semi-Rigid, RG-405
All parts of the connector as shown



CENTER PIN

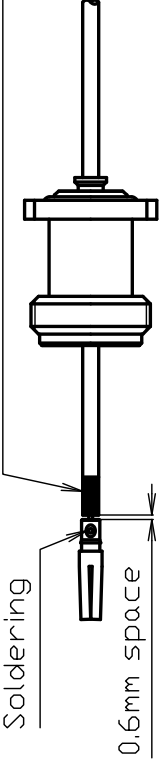


1 Slide body onto cable and inner conductor and insert center pin

(mm)

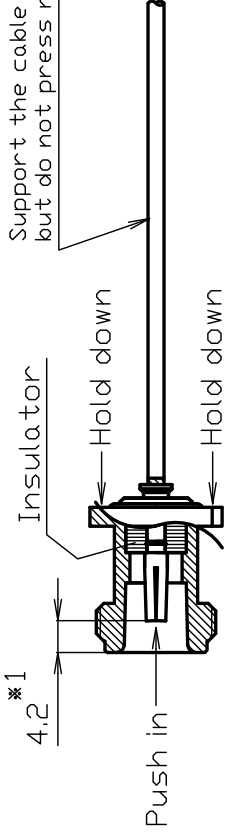
Polish here with sandpaper etc.

2 Solder center pin on cable. Dimension should be as shown. After soldering, slightly pull center pin to be securely attached. For details, refer to the diagram in diagram with sandpaper between cable and body.

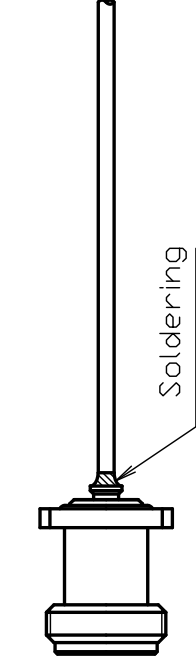


*1 Support the cable with your hand, but do not press nor pull.

3 Hold firmly from front and back. Install cable assembly until cable dilectrical insulator. Make sure center pin from front and back dimension shown in diagram.





4 Finally, solder body to cable.



ATTENTION Solder should be applied to the cable and body to secure the cable and prevent thermal stress does not occur when push the cable out or push the cable in.

Looking for pricing, stock, or lifecycle information?

Click below to explore more details on WIN SOURCE:

-  [View N-PJ-085 on WIN SOURCE](#)
-  [TYCLON Information](#)

Optimize Your Supply Chain with WIN SOURCE Solutions

-  Global Sourcing Solution
-  Obsolete Management
-  Cost Control Management
-  Shortage Management
-  Alternative Solution
-  Excess Inventory Management