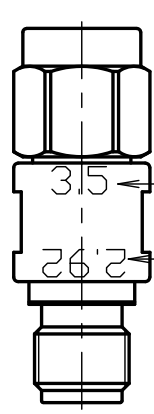




# THE DATASHEET OF K292J-3.5P



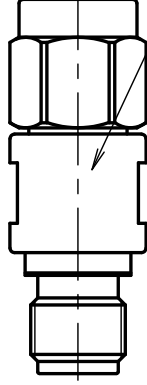
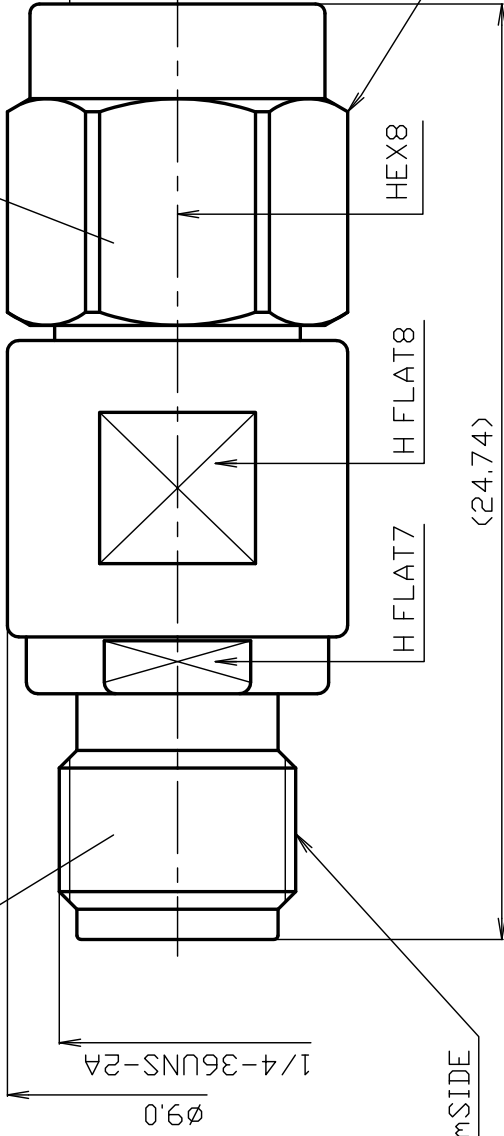


STAMP : 2.92

STAMP : 3.5

① ② ③ ④

⑤ ⑥



STAMP : TYC

- \*1 PASSIVATE
- \*2 STAINLESS STEEL
- \*3 BERYLLIUM COPPER

NO.	DESCRIPTION	MATERIAL	Q'TY	FINISH	REMARK
7					
6	COUPLING NUT	*2	1	*1	
5	HOLDING RING	*2	1	--	
4	BUSHING	*2	1	*1	
3	INSULATOR	EPOXY RESIN	1	--	
2	CENTER PIN	*3	1	Au	
1	BODY	*2	1	*1	
	SCALE	5/1			
	UNIT	mm			
	DATE	2024.02.28			
	DRAWN	上領			
	INSPECTED	檜澤			
	APPR	'24.02.28			
	PROJECTION	第一角			
		株式会社			70-

# PRODUCT SPECIFICATIONS

Part number : K292J-3.5P

No. 0642626

Drawing number : U-0646471

Nominal 1 Standard IEC 61169-35(2.92mm)、IEC 61169-23(3.5mm)

2 Voltage rating AC 335V

3 Rated frequency 34GHz

4 Impedance 50Ω





5 Operating temperature range -40°C~+85°C



		Test Items	Test Method/Value	Remarks
1 2 3 4	E L E C T R I C A L	Insulation resistance	5000MΩ(Min.) at DC 500V	
		Withstanding voltage	1 minute at AC 750V	
		Contact resistance	Inner conductor : 3.0mΩ(Max.) Outer conductor : 2.0mΩ(Max.)	
		V.S.W.R	DC~34GHz : 1.2(Max.)	
5		Compatibility	No defects or abnormalities	Connecting with a standard-compliant connector
6 7 8 9	M E C H A N I C A L	Tensile strength of coupling mechanism	180N	At axial tensile force
		Center contact retaining force	0.4N(Min.)	With a standard pin gauge
		Coupling torque	0.8~1.1N·m	
10	O T H E R S			
11				

※The structural shape is shown in the attached drawing (Drawing number:U-0646471)



REVISIONS		DATE
1		
2		
3		

Checked	Approved	Inspected	Prepared
			

GKQM-24

## Looking for pricing, stock, or lifecycle information?

Click below to explore more details on WIN SOURCE:

-  [View K292J-3.5P on WIN SOURCE](#)
-  [TYCLON Information](#)

## Optimize Your Supply Chain with WIN SOURCE Solutions

-  Global Sourcing Solution
-  Obsolete Management
-  Cost Control Management
-  Shortage Management
-  Alternative Solution
-  Excess Inventory Management