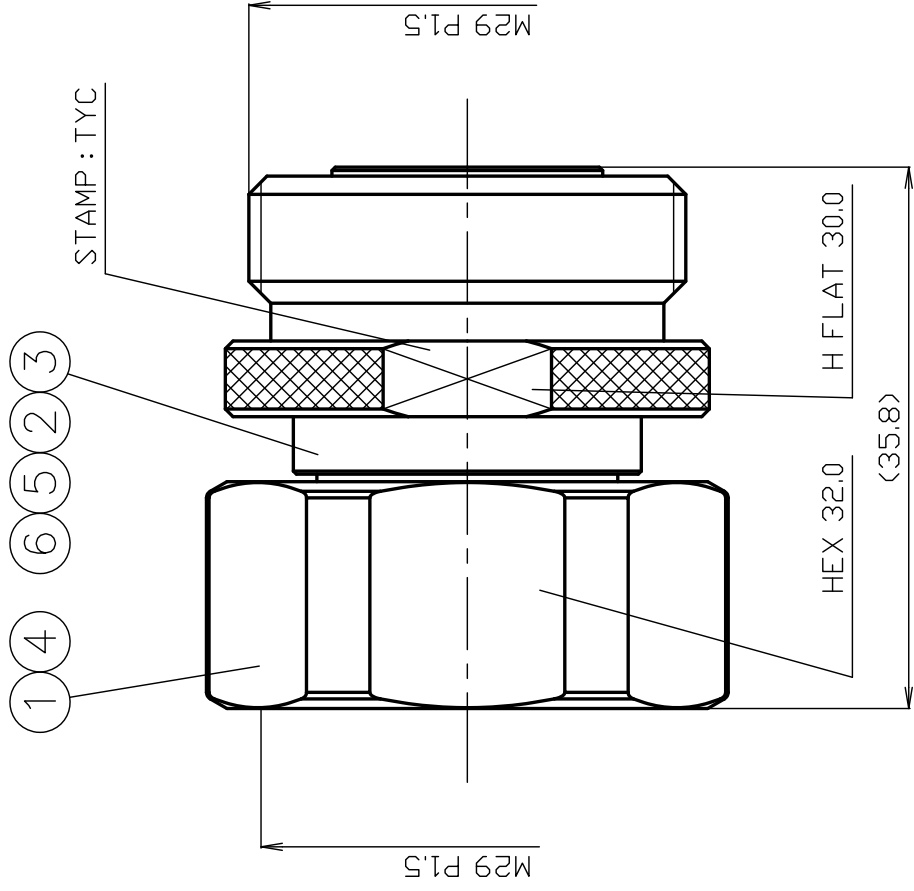




THE DATASHEET OF
7/16P-7/16J





*1: TERNARY PLATING
 *2: PHOSPHOR BRONZE

NO.	DESCRIPTION	MATERIAL	Q'TY	FINISH	REMARK
7					
6	INSULATOR	PTFE	1	--	
5	CENTER PIN	*2	1	A9	
4	HOLDING RING	*2	1	Ni	
3	BODY	BRASS	1	*1	
2	GASKET	SILICONE	1	--	
1	COUPLING NUT	BRASS	1	*1	
	DESCRIPTION	MATERIAL	Q'TY	FINISH	REMARK

DRAWN	INSPECTED	APPR
渡邊 直弘 '24.03.29	檜 澤 '24.03.29	上 '24.03.29

SCALE	UNIT	DATE
2/1	mm	2024.03.29

PROJECTION	LOGO	70
PROJECTION	LOGO	70

PRODUCT SPECIFICATIONS

Part number: 7/16P-7/16J

No. 1041413

Drawing number: D-1043994





Nominal 1 Standard IEC 61169-4
 2 Voltage rating 2.7kV max. at 50Hz
 3 Rated frequency 6GHz
 4 Impedance 50Ω
 5 Operating temperature range -40°C~+85°C
 6 Operating humidity range 95%(Max.) ※No condensation



Test Items		Test Method/Value	Remarks	
ELECTRICAL	1	Insulation resistance	5000MΩ(Min.) at DC 500V	
	2	Withstanding voltage	1 minute at AC 4000V	
	3	Contact resistance	Inner conductor : 0.4mΩ(Max.) Outer conductor : 1.5mΩ(Max.)	
	4	V.S.W.R	DC~6GHz : 1.2(Max.)	
	5	Intermodulation	-163dBc(Max.)	2×43dBm
MECHANICAL	6	Compatibility	No defects or abnormalities	Connecting with a standard-compliant connector
	7	Tensile strength of coupling mechanism	445N	At axial tensile force
	8	Coupling torque	25~30N·m	
ENVIRONMENTAL	9	Waterproof	IPX7	In the mated condition

※The structural shape is shown in the attached drawing (Drawing number:D-1043994)



REVISIONS		DATE
1		
2		
3		

Checked	Approved	Inspected	Prepared
 三 24.03.29 村	 山 24.03.29 本	 樽 24.03.29 澤	 渡邊 '24.03.29 直弘

GKQM-24

Looking for pricing, stock, or lifecycle information?

Click below to explore more details on WIN SOURCE:

-  [View 7/16P-7/16J on WIN SOURCE](#)
-  [TYCLON Information](#)

Optimize Your Supply Chain with WIN SOURCE Solutions

-  Global Sourcing Solution
-  Obsolete Management
-  Cost Control Management
-  Shortage Management
-  Alternative Solution
-  Excess Inventory Management