



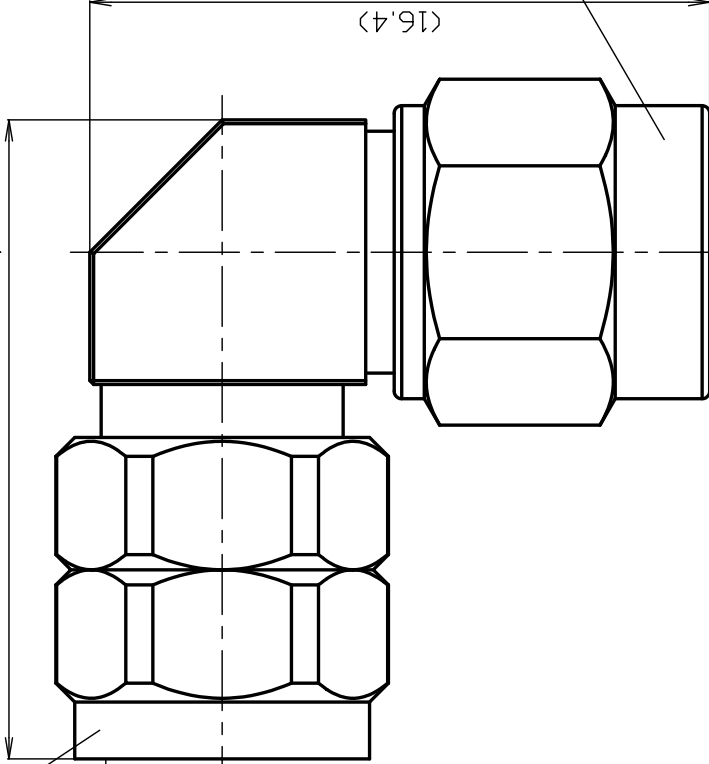
**THE DATASHEET OF  
2.4P-LA-K292P**



①②⑤⑥⑦⑧⑨⑩⑪

(16.9)

VIEW A



VIEW B

(16.4)

③④

\*1 PASSIVATE  
 \*2 STAINLESS STEEL  
 \*3 BERYLLIUM COPPER

1/4-36UNS-2B

| NO. | DESCRIPTION    | MATERIAL | Q'TY | FINISH | REMARK |
|-----|----------------|----------|------|--------|--------|
| 11  | BUSHING        | *2       | 5    | *1     |        |
| 10  | CENTER PIN C   | *3       | 1    | Au     |        |
| 9   | INSULATOR B    | PEI      | 1    | --     |        |
| 8   | CENTER PIN B   | *3       | 1    | Au     |        |
| 7   | INSULATOR A    | PEI      | 1    | --     |        |
| 6   | CENTER PIN A   | *3       | 1    | Au     |        |
| 5   | BODY           | *2       | 1    | *1     |        |
| 4   | HOLDING RING B | *3       | 1    | Ni     |        |
| 3   | COUPLING NUT B | *2       | 1    | *1     |        |
| 2   | HOLDING RING A | *3       | 1    | Ni     |        |
| 1   | COUPLING NUT A | *2       | 1    | *1     |        |

SCALE 5/1  
 UNIT mm  
 DATE 2024.05.24

|           |    |           |
|-----------|----|-----------|
| DRAWN     | 井出 | '24.05.24 |
| INSPECTED | 樽澤 | '24.05.24 |
| APPR      |    | '24.05.24 |

PROJECTION

株式会社 70-

# PRODUCT SPECIFICATIONS

Part number: 2.4P-LA-K292P

No. 0642561

Drawing number: U-0646359

Nominal 1 Standard IEC 61169-40、IEC 61169-35

2 Voltage rating AC 160V

3 Rated frequency 40GHz

4 Impedance 50Ω





5 Operating temperature range -40°C~+85°C



| Test Items                                     |   | Test Method/Value                      | Remarks  |
|--|---|--|--|
| E<br>L<br>E<br>C<br>T<br>R<br>I<br>C<br>A<br>L | 1 | Insulation resistance                  | 1000MΩ(Min.) at DC 500V  |
|  | 2 | Withstanding voltage                   | 1 minute at AC 500V  |
|  | 3 | Contact resistance                     | Inner conductor : 4.0mΩ(Max.)(2.4Side)<br>Inner conductor : 3.0mΩ(Max.)(2.92Side)<br>Outer conductor : 2.5mΩ(Max.)(2.4Side)<br>Outer conductor : 2.0mΩ(Max.)(2.92Side) |
|  | 4 | VSWR                                   | DC~40GHz : 1.25(Max.)  |
| M<br>E<br>C<br>H<br>A<br>N<br>I<br>C<br>A<br>L | 5 | Compatibility                          | No defects or abnormalities<br><br>Connecting with a standard-compliant connector  |
|  | 6 | Tensile strength of coupling mechanism | 450N(2.4Side)<br><br>100N(2.92Side)<br><br>At axial tensile force  |
|  | 7 | Coupling torque                        | 0.8~1.1N·m   |
| O<br>T<br>H<br>E<br>R<br>S                     |   |  |  |
|  |   |  |  |

※The structural shape is shown in the attached drawing (Drawing number:U-0646359)



| REVISIONS |  | DATE |
|-----------|--|------|
| 1         |  |      |
| 2         |  |      |
| 3         |  |      |

| Checked   | Approved   | Inspected   | Prepared  |
|---|--|---|---|
| <br>三<br>24.05.24<br>村 | <br>山<br>24.05.24<br>本 | <br>檜<br>24.05.24<br>澤 | <br>井<br>24.05.24<br>出 |

GKQM-24

## Looking for pricing, stock, or lifecycle information?

Click below to explore more details on WIN SOURCE:

-  [View 2.4P-LA-K292P on WIN SOURCE](#)
-  [TYCLON Information](#)

## Optimize Your Supply Chain with WIN SOURCE Solutions

-  Global Sourcing Solution
-  Obsolete Management
-  Cost Control Management
-  Shortage Management
-  Alternative Solution
-  Excess Inventory Management