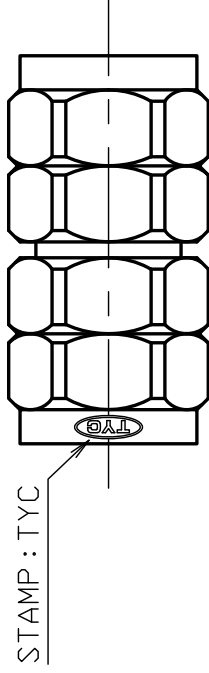




THE DATASHEET OF 2.4-A-PP

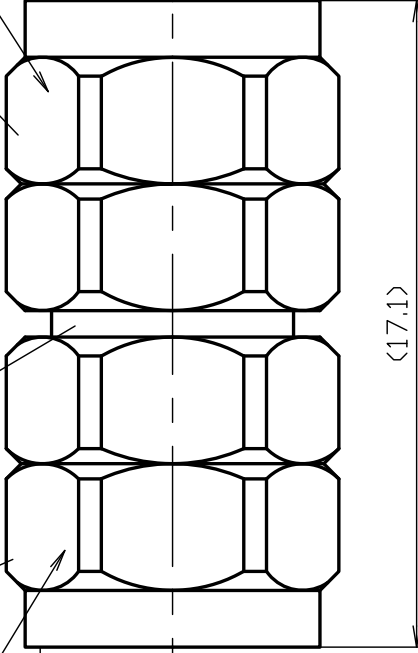




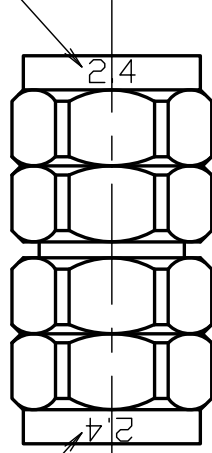
⑥ ⑤ ③ ④ ② ① ⑤ ⑥

HEX 8.0

HEX 8



STAMP : 2.4



STAMP : 2.4

- *1 PASSIVATE
- *2 STAINLESS STEEL
- *3 BERYLLIUM COPPER

NO.	DESCRIPTION	MATERIAL	Q'TY	FINISH	REMARK
7					
6	COUPLING NUT	*2	2	*1	
5	HOLDING RING	*3	2	Ni	
4	BODY B	*2	1	*1	
3	BODY A	*2	1	*1	
2	INSULATOR	PEI	1	--	
1	CENTER PIN	*3	1	Au	
	DESCRIPTION	MATERIAL	Q'TY	FINISH	REMARK

SCALE	5/1
UNIT	mm
DATE	2023.11.29

DRAWN	上領	'24.04.01
INSPECTED	檜澤	'24.04.01
APPR		'24.04.01

PROJECTION	第一角
株式会社	70-

PRODUCT SPECIFICATION

Part number: 2.4-A-PP

No. 1042636

Drawing number: W-1046483

Nominal 1 Standard	IEC 61169-40
2 Voltage rating	AC 160V
3 Frequency range	50GHz
4 Impedance	50Ω
5 Operating Temperature Range	-40°C~+85°C
6 Operating Humidity Range	95%RH(Max.) ※No condensation



	Test Items	Test Method/Value	Remarks
1	E L E C T R I C A L	Insulation Resistance	1000MΩ(Min.) at DC 500V
2		Withstand voltage	1 minute at AC 500V
3		Contact resistance	Inner conductor : 4mΩ(Max.) Outer conductor : 2.5mΩ(Max.)
4		V.S.W.R	DC~50GHz : 1.25(Max.)
5	M E C H A N I C A L	Compatibility	No defects or abnormalities Mating with connector complying with the standard
6		Tensile strength of coupling mechanism	450N At axial tensile force
7		Coupling torque	0.8~1.1N·m

※The structural shape is shown in the attached drawing (Drawing number:W-1046483)

	REVISIONS	DATE
1		
2		
3		

Checked	Approved	Inspected	Preparation
23.11.30	23.11.30	23.11.30	'23,11,30
村	本	澤	直弘

GKQM-24

Looking for pricing, stock, or lifecycle information?

Click below to explore more details on WIN SOURCE:

- ⊖ [View 2.4-A-PP](#) on WIN SOURCE
- ⊖ [TYCLON](#) Information

Optimize Your Supply Chain with WIN SOURCE Solutions

- ✓ Global Sourcing Solution
- ✓ Obsolete Management
- ✓ Cost Control Management
- ✓ Shortage Management
- ✓ Alternative Solution
- ✓ Excess Inventory Management