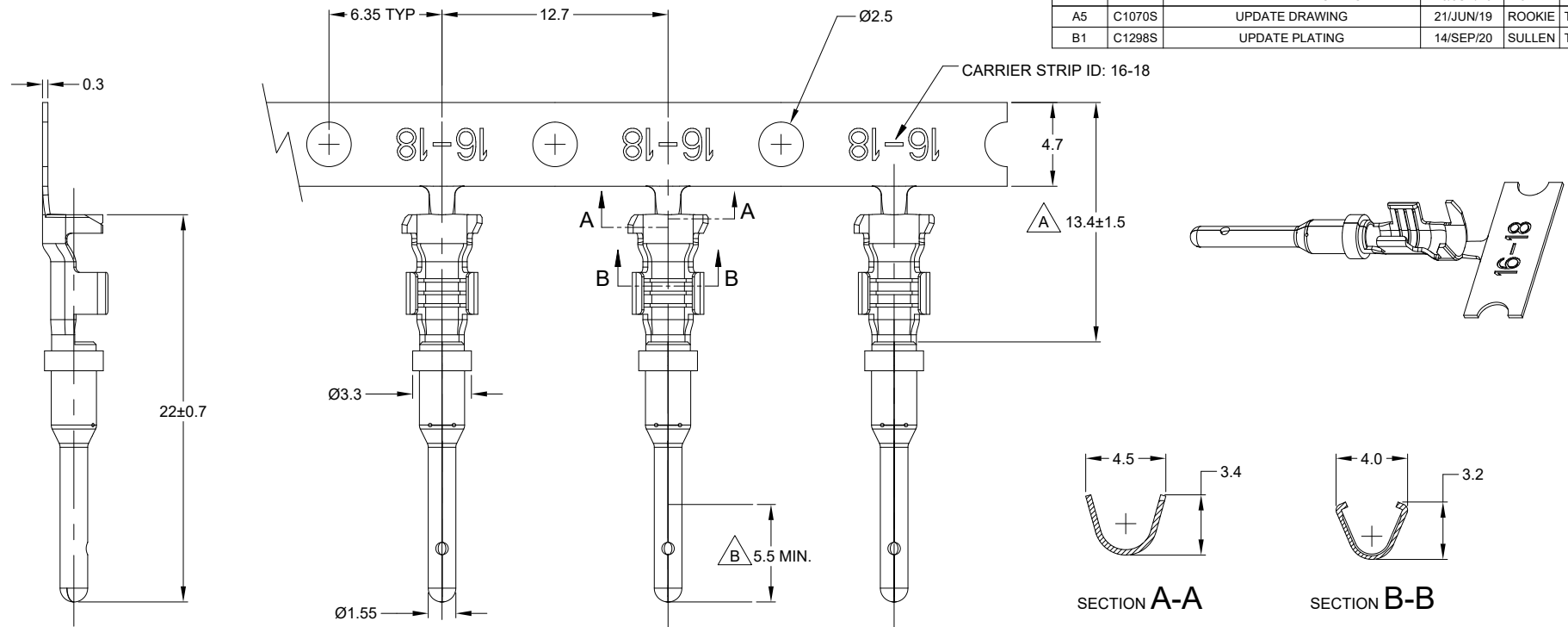




**THE DATASHEET OF  
AT60-16-0144**

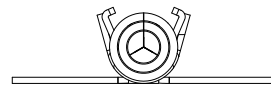


| REVISIONS |        |                        |           |        |       |
|-----------|--------|------------------------|-----------|--------|-------|
| REV       | ECO    | DESCRIPTION            | DATE      | BY     | APPR  |
| A3        | -      | RELEASE NEW DWG FORMAT | 21OCT13   | DRP    | -     |
| A4        | -      | REVISED PLATING INFO   | 16/JUN/16 | JAH    | -     |
| A5        | C1070S | UPDATE DRAWING         | 21/JUN/19 | ROOKIE | TOMMY |
| B1        | C1298S | UPDATE PLATING         | 14/SEP/20 | SULLEN | TOMMY |



NOTES: UNLESS OTHERWISE SPECIFIED

- MATERIAL: COPPER ALLOY
- PLATING: SEE PART NUMBER CHART
- CONTACT SIZE: 16
- SPECIFICATIONS:
  - CURRENT RATING: 13 AMPS
  - CONTACT MILLIVOLT DROP: 100 MILLIVOLT DROP @ 13 AMP TEST CURRENT.
  - RoHS COMPLIANT
- RECOMMENDED WIRE RANGE: 16 - 18 AWG (1.5 - 0.75mm<sup>2</sup>)  
CUSTOMER OPTIONAL WIRE RANGE: 14 AWG (2.0mm<sup>2</sup>)  
RECOMMENDED INSUL O.D.: 1.91 - 3.55MM (0.075 - 0.140INCH)
- PACKAGE: 4000 PCS/REEL
- AVAILABLE APPLICATORS: MFX-3953-K OR MFX-3953-G
- ALL DIMENSIONS ARE FOR REFERENCE USE ONLY



| PART NUMBER CHART |              |   |
|-------------------|--------------|---|
| PLATING           | PART NUMBER  | PLATING DESCRIPTION   |
| NICKEL            | AT60-16-0122 | SELECTIVE TIN OVER NICKEL OVERALL IN $\Delta$ ZONE                          |
| GOLD              | AT60-16-0144 | SELECTIVE GOLD FLASH OVER NICKEL OVERALL IN $\nabla$ ZONE OR ENTIRE CONTACT |
| TIN               | AT60-16-0177 | TIN OVER NICKEL OVERALL   |

| SEE PART NUMBER CHART   |             | REF: 1060-16-0144, 1060-16-0122, 1060-16-0177   |      |
|---|-------------|---|------|
| QUANTITY  | PART NUMBER | DESCRIPTION   | ITEM |
| <p><b>MATERIALS LIST</b></p> <p><b>Amphenol</b></p> <p>Sine Systems - www.amphenol-sine.com<br/>44724 Morley Drive<br/>Clinton Township, MI 48036</p> <p>CONTACT, PIN, STAMPED, SIZE 16,<br/>16-18 AWG, A SERIES</p>  |             |   |      |
| <p>UNLESS OTHERWISE SPECIFIED</p> <p>1) All dimensions are in metric (mm).</p> <p>2) Tolerances are as follows:</p> <p>1 PL DEC ±0.30 Fractions ±1/64</p> <p>2 PL DEC ±0.15 Angles ±1°</p> <p>3 PL DEC ±0.08</p> <p>3) Note reference = <math>\Delta</math></p> |             | <p><b>SIGNATURES</b>      <b>DATE</b></p> <p>DRAWN: SULLENZHANG      14/SEP/20</p> <p>CHECKED: ORONLI      15/SEP/20</p> <p>ENGINEER:</p> <p>APPROVAL: TOMMY XIE      18/SEP/20</p> <p>CUSTOMER:</p>  |      |
| <p>MATERIAL SPECIFICATIONS:</p> <p>PROCESS SPECIFICATIONS:</p> <p>NEXT ASSY:</p>  |             | <p>THIS DRAWING IS SUPPLIED FOR INFORMATION ONLY. DESIGN FEATURES, SPECIFICATIONS AND PERFORMANCE DATA SHOWN HEREON ARE THE PROPERTY OF THE AMPHENOL CORPORATION. NO RIGHTS OF REPRODUCTION ARE IMPLIED. ALL DIMENSIONS ARE SUBJECT TO NORMAL MANUFACTURING VARIATIONS.</p> |      |
| <p>SIZE: B C-</p> <p>SCALE: NONE</p>  |             | <p>DWG NO: AT60-16-01XX</p> <p>REVISION: B1</p> <p>SHEET 1 OF 1</p>   |      |

TITLE: PIN, STAMPED, SIZE 16, 16-18 AWG, A SERIES  
DWG NO: AT60-16-01XX  
REV: B1  
SH: 1  
OF: 1

## Looking for pricing, stock, or lifecycle information?

Click below to explore more details on WIN SOURCE:

- ⊖ [View AT60-16-0144 on WIN SOURCE](#)
- ⊖ [Amphenol Sine Systems Corp Information](#)

## Optimize Your Supply Chain with WIN SOURCE Solutions

- ✓ Global Sourcing Solution
- ✓ Obsolete Management
- ✓ Cost Control Management
- ✓ Shortage Management
- ✓ Alternative Solution
- ✓ Excess Inventory Management