

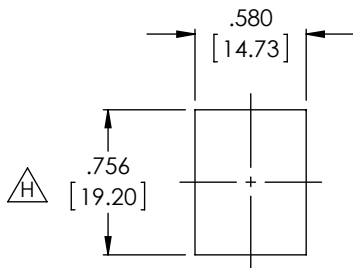


**THE DATASHEET OF
TDG1026KS-C6**

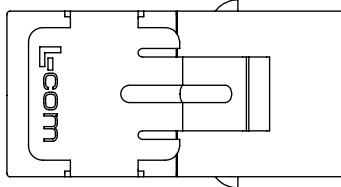


THE INFORMATION CONTAINED IN THIS DRAWING IS THE SOLE PROPERTY OF L-COM, INC. ANY REPRODUCTION IN PART OR WHOLE WITHOUT THE WRITTEN PERMISSION OF L-COM, INC. IS PROHIBITED.

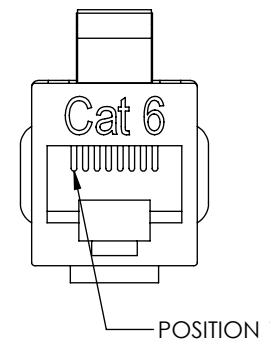
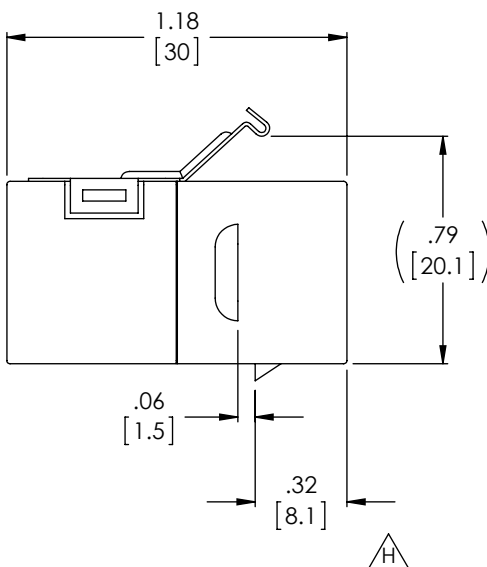
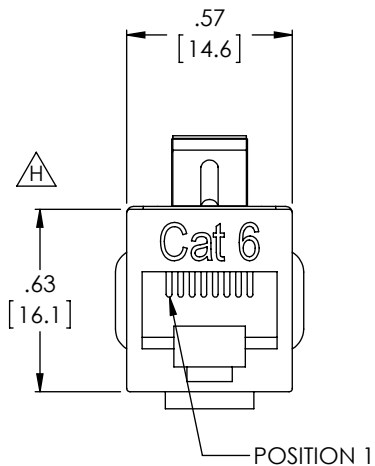
REVISIONS			
REV	DESCRIPTION	DATE	APPROVED
E	ECN 4609: ADDED COLOR BLACK TO ABS HOUSING	3/11/10	D.FRISIELLO
F	ECN 6168: ADDED NOTE 8 FOR PACKAGING	5/14/12	D.FRISIELLO
G	ECN 6881: REVISED PANEL CUTOUT, UPDATED MODEL/DIMENSIONS	6/14/13	D.DESJARDIN
H	ECN 7409: UPDATED PER NEW SUPPLIER SPEC	5/19/14	D. CASTRO



RECOMMENDED
PANEL OPENING



WIRING	
PIN 1	PIN 1
PIN 2	PIN 2
PIN 3	PIN 3
PIN 4	PIN 4
PIN 5	PIN 5
PIN 6	PIN 6
PIN 7	PIN 7
PIN 8	PIN 8
SHIELD	SHIELD



NOTES:

MATERIAL:
HOUSING: ABS, UL94V-0, COLOR: BLACK.
CONTACTS: PHOSPHOR BRONZE
CONTACT PLATING: GOLD, 50 μ INCHES OVER NICKEL PLATE.
SHIELD: BRASS WITH NICKEL PLATE.

ELECTRICAL:
DC CURRENT RATING: 1.5 AMP
VOLTAGE RATING: 150 VOLTS
INSULATION RESISTANCE: 500MΩ

MISCELLANEOUS:
RATING: CATEGORY 6
OPERATING TEMPERATURE RANGE: -10°C TO +60°C.

COMPONENT SHALL BE INDIVIDUALLY PACKAGED IN ACCORDANCE WITH L-COM SPECIFICATION PS-0031.

ALL DIMENSIONS ARE FOR REFERENCE ONLY.

REGULATORY COMPLIANCE:
CE2011/65/EU(RoHS DIRECTIVE)

UNLESS OTHERWISE SPECIFIED, DIMENSIONS ARE IN INCHES [mm] OVERALL CABLE LENGTH TOLERANCE: ≤12 [305] = +1 [25] / -0 >12 [305] ≤60 [1524] = +2 [51] / -0 >60 [1524] ≤120 [3048] = +4 [102] / -0 >120 [3048] ≤300 [7620] = +6 [152] / -0 >300 [7620] = +5% / -0%	APPROVALS	DATE		45 BEECHWOOD DRIVE NORTH ANDOVER, MA 01845
	DRAWN BY B.MAZEJKA	06/16/2003		
ALL OTHER DIMENSIONAL TOLERANCES: .X = ± .2 [5.08] .XX = ± .02 [1.51] .XXX = ±.005 [1.13]	CHECKED BY D.PARHAM	07/11/2003	CATEGORY TELECOM/MODULAR	
	APPROVED BY C.McCORMICK	07/11/2003	PRODUCT DESCRIPTION CAT 6 SHLD RJ45 KEYSTONE CPLR	
PROJECTION 	CONFIGURATION DETAILS OF UNDIMENSIONED FEATURES MAY VARY	COLOR VARIATIONS MAY OCCUR	SIZE A	FSCM NO. 43321
			DWG. NO. TDG1026KS-C6	REV. H
			SCALE: NONE	CAD FILE: TDG1026KS-C6.SLDRW
				SHEET 1 OF 1

Looking for pricing, stock, or lifecycle information?

Click below to explore more details on WIN SOURCE:

 [View TDG1026KS-C6 on WIN SOURCE](#)

 [L-com Information](#)

Optimize Your Supply Chain with WIN SOURCE Solutions

-  Global Sourcing Solution
-  Obsolete Management
-  Cost Control Management
-  Shortage Management
-  Alternative Solution
-  Excess Inventory Management