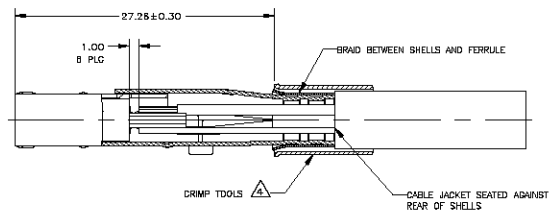


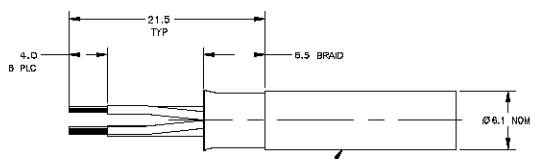


**THE DATASHEET OF**  
**5787950-1**





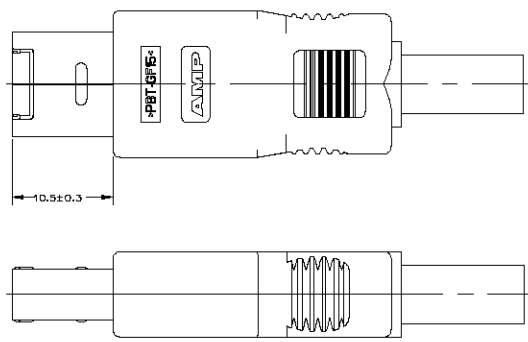
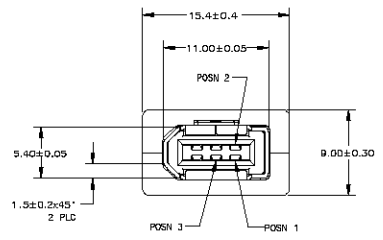
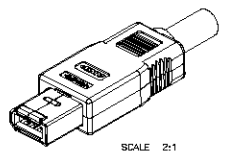
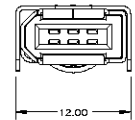
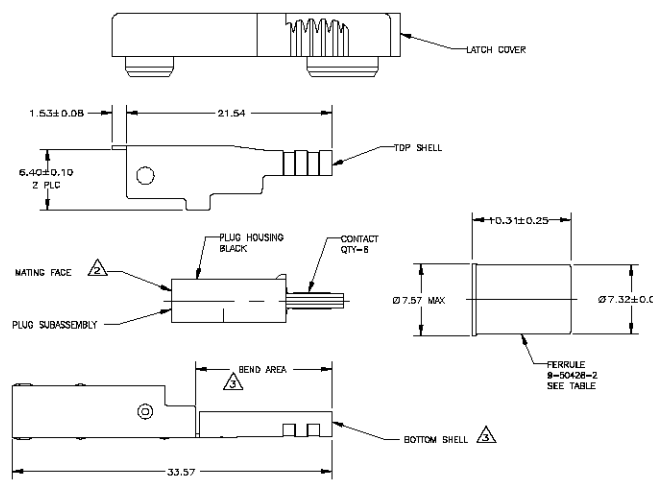
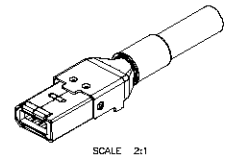
ASSEMBLED VIEW BEFORE CRIMP



CUSTOMER SUPPLIED CABLE  
CABLE 378973-1, GRAY, 8 CONDUCTOR,  
30/22 AWG, UNSTRIPPED IS AVAILABLE

- ⚠️ PLUG HOUSING AND COVERS: POLYESTER PBT, UL 94V-0 RATED; CONTACTS: PHOSPHOR BRONZE; SHELLS: CARBON STEEL; FERRULE: COPPER.
- ⚠️ FERRULE: 0.002-0.005 TIN OVER NICKEL; SHELLS: 0.002-0.005 TIN OVER NICKEL; CONTACTS: 0.00075 MIN GOLD OR (0.00075 MIN GOLD OVER 0.00075 MIN PALLADIUM) IN A 0.4 MIN WIDE AREA 0.82 FROM MATING FACE END OF CONTACT TIP, 0.00351 MIN TIN 5 MIN FROM OPPOSITE END, ALL OVER 0.00127 MIN NICKEL.
- ⚠️ BOTTOM SHELL SHOWN STRAIGHT, WILL BE DELIVERED WITH BEND AREA, FOR PLUG SUBASSEMBLY INSERTION.
- ⚠️ RECOMMENDED CRIMP TOOLS: PRO CRIMPER 354940-1 WITH DIE SET 58537-1 FOR Ø6.1 CABLE.

LEAD FREE



788513-3	788514-3	5787949-1	9-50428-2	788511-1	GRAY	788512-1	GRAY	5787950-1
TOP SHELL (1)	BOTTOM SHELL (1)	PLUG SUB-ASSY (1)	FERRULE (1)	COVER (1)	COLOR	LATCH COVER (1)	COLOR	PART NO
THIS DRAWING IS A CONTROLLED DOCUMENT.								
DRAWN BY: LEI ZHOU			CHECKED BY: STEVEN YAO			DATE: 01/20/2010		
MATERIAL: PBT			FINISH: FRESH			APPLICATION SPEC: ---		
NATURAL			CUSTOMER DRAWING			SIZE: A1		
DATE: 00779			DRAWING NO: 5787950			REVISION: ---		
SCALE: 4:1			SHEET: 1			OF: 1		

## Looking for pricing, stock, or lifecycle information?

Click below to explore more details on WIN SOURCE:

 [View 5787950-1](#) on WIN SOURCE

 [TE Connectivity](#) Information

## Optimize Your Supply Chain with WIN SOURCE Solutions

-  Global Sourcing Solution
-  Obsolete Management
-  Cost Control Management
-  Shortage Management
-  Alternative Solution
-  Excess Inventory Management