



**THE DATASHEET OF**  
**5650895-4**



5650895-4 ✓ ACTIVE

EUROCARD | Eurocard Type R

TE Internal #: 5650895-4

Receptacle, Board-to-Board, 96 Position, 2.54 mm [.1 in] Centerline,  
Printed Circuit Board, 3 Row, Right Angle, Eurocard Type R,  
Eurocard Connectors

[View on TE.com >](#)



Connectors > PCB Connectors > Backplane Connectors > Eurocard Connectors



Connector & Housing Type: **Receptacle**

Connector System: **Board-to-Board**

Termination Post & Tail Length: **2.79 mm [.11 in]**

Number of Positions: **96**

Centerline (Pitch): **2.54 mm [.1 in]**

## Features

### Electrical Characteristics

Operating Voltage	250 VAC
-------------------	---------

### Industry Standards

UL Flammability Rating	UL 94V-0
------------------------	----------

### Body Features

Primary Product Color	Gray
-----------------------	------

### Mechanical Attachment

Connector Mounting Type	Board Mount
Panel Mount Feature	Without
PCB Mount Retention	With
Mating Retention	Without
PCB Mount Retention Type	Boardlock
Mating Alignment	Without
PCB Mount Alignment	Without



### Packaging Features

Packaging Method	Box
------------------	-----

### Contact Features

Contact Mating Area Plating Material Thickness	.76 $\mu\text{m}$ [30 $\mu\text{in}$ ]
PCB Contact Termination Area Plating Material Thickness	2.54 $\mu\text{m}$ [100 $\mu\text{in}$ ]
Contact Mating Area Plating Material	Gold
Contact Base Material	Copper Alloy
PCB Contact Termination Area Plating Material	Tin
Contact Type	Socket
Contact Current Rating (Max)	1.5 A

### Dimensions

PCB Thickness (Recommended)	1.57 mm[.062 in]
Connector Height	10.49 mm[.413 in]
Row-to-Row Spacing	2.54 mm[.1 in]

### Housing Features

Housing Material	Polymer - GF
Centerline (Pitch)	2.54 mm[.1 in]

### Termination Features

Termination Method to PCB	Through Hole - Solder
Termination Post & Tail Length	2.79 mm[.11 in]

### Product Type Features

Connector & Housing Type	Receptacle
Connector System	Board-to-Board
Connector & Contact Terminates To	Printed Circuit Board
DIN Size	Standard
DIN Level	II

### Configuration Features

Number of Positions	96
Number of Rows	3
PCB Mount Orientation	Right Angle
Number of Columns	32
Number of Signal Positions	96



Rows Loaded	B, C, A
-------------	---------

### Usage Conditions

Operating Temperature Range	-55 – 105 °C[-67 – 221 °F]
-----------------------------	----------------------------

### Operation/Application

Circuit Application	Signal
---------------------	--------

### Other

EU RoHS Compliance	Compliant
--------------------	-----------

EU ELV Compliance	Compliant
-------------------	-----------

### Product Compliance

[For compliance documentation, visit the product page on TE.com>](#)

EU RoHS Directive 2011/65/EU	Compliant
------------------------------	-----------

EU ELV Directive 2000/53/EC	Compliant
-----------------------------	-----------

China RoHS 2 Directive MIIT Order No 32, 2016	No Restricted Materials Above Threshold
---	---

EU REACH Regulation (EC) No. 1907/2006	Current ECHA Candidate List: JUNE 2024 (241) Candidate List Declared Against: JUNE 2024 (241) Does not contain REACH SVHC
--	---

Halogen Content	Low Halogen - Br, Cl, F, I < 900 ppm per homogenous material. Also BFR/CFR/PVC Free
-----------------	---

Solder Process Capability	Wave solder capable to 265°C
---------------------------	------------------------------

#### Product Compliance Disclaimer

This information is provided based on reasonable inquiry of our suppliers and represents our current actual knowledge based on the information they provided. This information is subject to change. The part numbers that TE has identified as EU RoHS compliant have a maximum concentration of 0.1% by weight in homogenous materials for lead, hexavalent chromium, mercury, PBB, PBDE, DBP, BBP, DEHP, DIBP, and 0.01% for cadmium, or qualify for an exemption to these limits as defined in the Annexes of Directive 2011/65/EU (RoHS2). Finished electrical and electronic equipment products will be CE marked as required by Directive 2011/65/EU. Components may not be CE marked. Additionally, the part numbers that TE has identified as EU ELV compliant have a maximum concentration of 0.1% by weight in homogenous materials for lead, hexavalent chromium, and mercury, and 0.01% for cadmium, or qualify for an exemption to these limits as defined in the Annexes of Directive 2000/53/EC (ELV). Regarding the REACH Regulation, the information TE provides on SVHC in articles for this part number is based on the latest European Chemicals Agency (ECHA) 'Guidance on requirements for substances in articles' posted at this URL: <https://echa.europa.eu/guidance-documents/guidance-on-reach>

### Compatible Parts



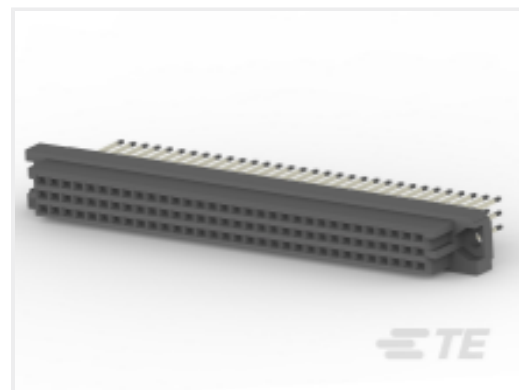
TE Part # 5535032-1  
ASSY,RECEPTACLE,EUROCARD,TYPE



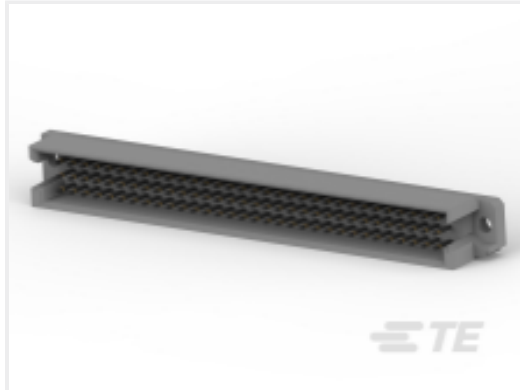
TE Part # 1-536437-5  
096 EURO TYPE C PIN MFBL ASSY



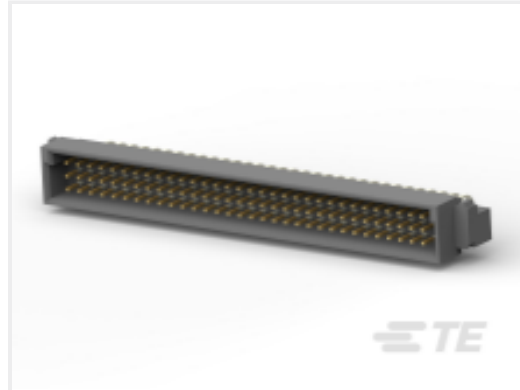
TE Part # 148292-5  
096 EURO TYP R RECEPT EON ASSY



TE Part # 5148057-5  
ASSY,RECEPTACLE,EUROCARD,TYPE C,LEAD-FRE



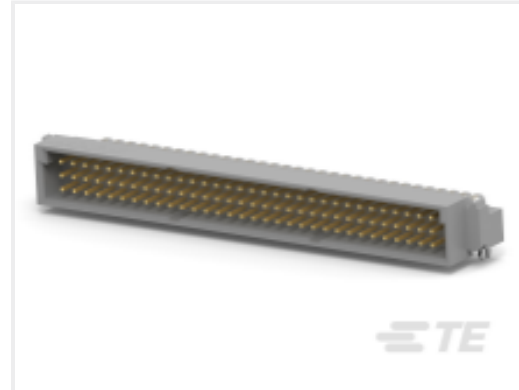
TE Part # 5650908-5  
ASSY,PIN,EUROCARD,TYPE R,LEAD-



TE Part # 5650947-5  
ASSY,PIN,EUROCARD,TYPE C,LEAD-



TE Part # 650947-5  
096 EURO TYPE C PIN ST ASSY



TE Part # 5536405-5  
ASSY,PIN,EUROCARD,TYPE C,LEAD-



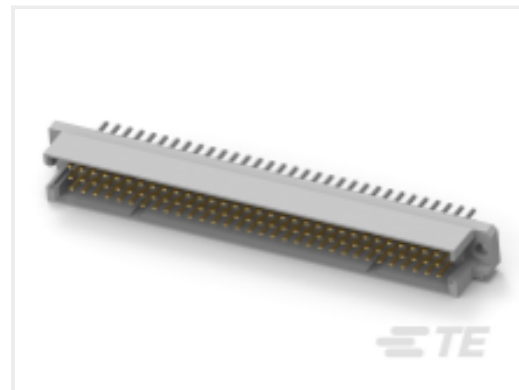
TE Part # 650470-5  
096 EURO TYPE R PIN ST ASSY



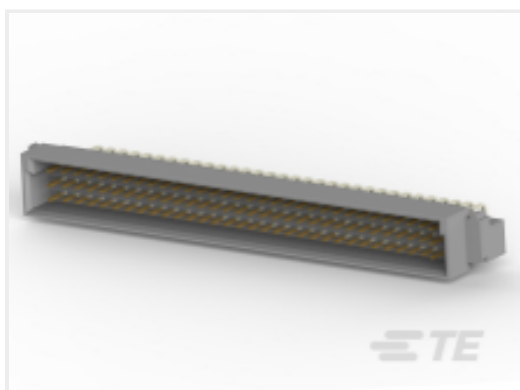
TE Part # 535043-5  
096 EURO TYPE C RECEPT ST ASSY



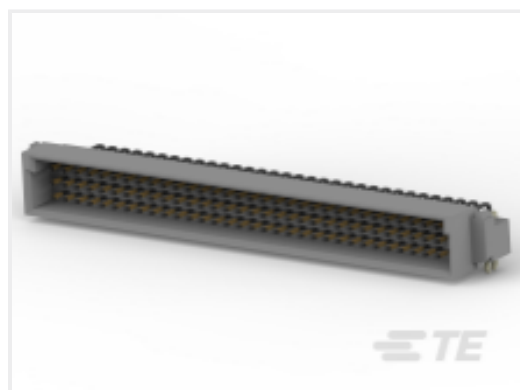
TE Part # 650908-5  
096 EURO TYPE R PIN ST ASSY



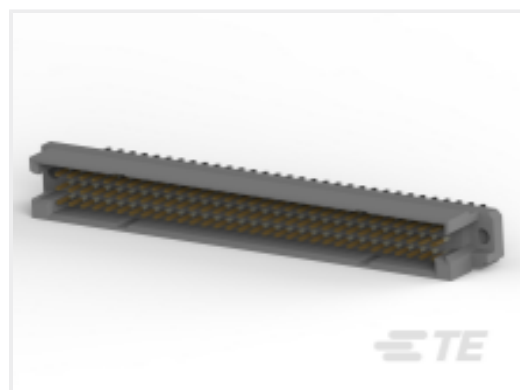
TE Part # 536019-5  
096 EURO TYP R PIN AP MFBL ASSY



TE Part # 5536437-4  
ASSY,PIN,EUROCARD,TYPE C,LEAD-FREE,96 PO



TE Part # 5650913-5  
ASSY,PIN,EUROCARD,TYPE C,LEAD-



TE Part # 650889-5  
096 EURO TYPE R PIN AP ASSY



TE Part # 650913-5  
096 EURO TYPE C PIN BL ASSY



TE Part # 5650462-4  
ASSY,RECEPTACLE,EUROCARD,TYPE



TE Part # 5535043-4  
ASSY,RECEPTACLE,EUROCARD,TYPE

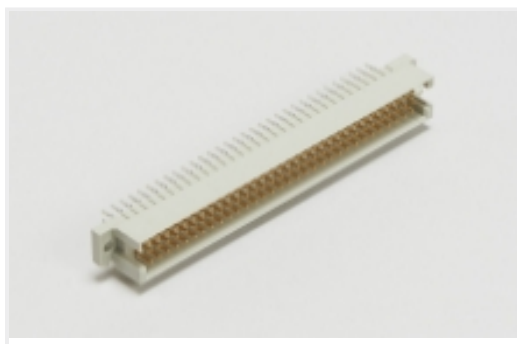


TE Part # 650461-5  
096 EURO TYPE R RECEPT ASSY

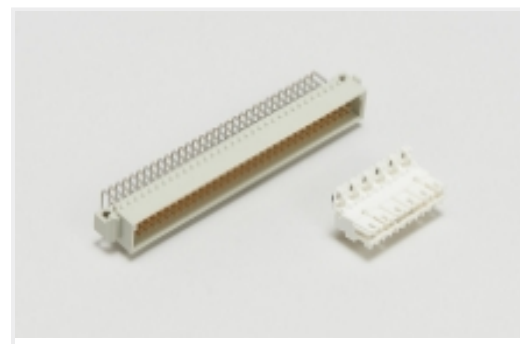


TE Part # 8-1393640-9  
V42254B2201C910=PC612 FEDERLEI

Also in the Series | Eurocard Type R

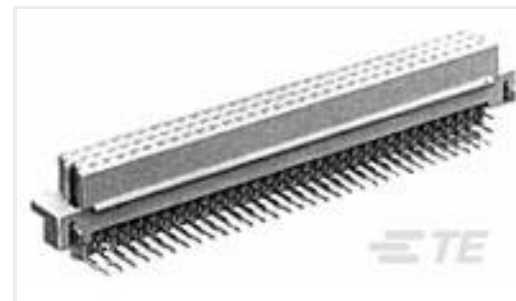
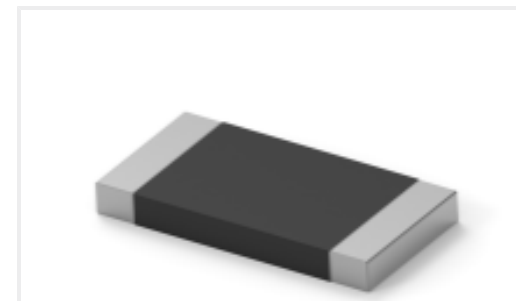
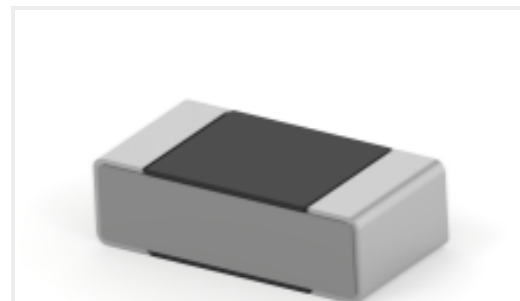
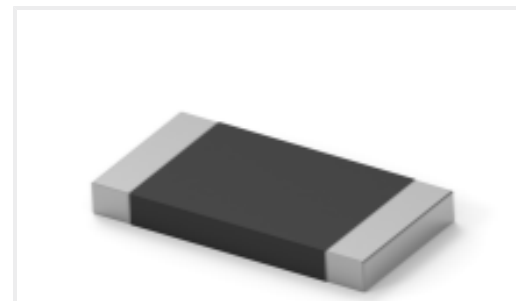
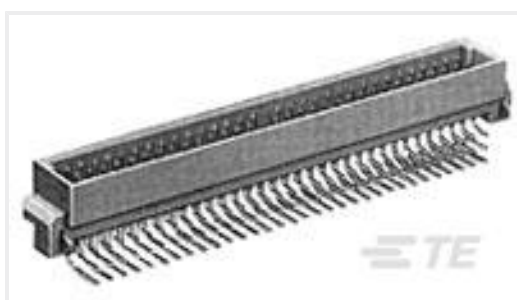


Eurocard Connectors(80)



Standard Edge Connectors(1)

## Customers Also Bought

TE Part #6339167-2  
ASSY,SHLD,1X4,MJ,WAVE PNLTE Part #641973-1  
12P UMNL PIN HDR ASSY V2 NATLTE Part #5650870-4  
ASSEMBLY,RECEPTACLE,EURO,TYPETE Part #4-2176422-2  
TLRP 2512 3.0W R100 1% 25PPM 4K RLTE Part #641975-1  
15P UMNL PIN HDR ASSY POL NATLTE Part #6-1879216-3  
CPF 0402 237K 0.1% 25PPM 1K RLTE Part #3-2176422-3  
TLRP 2512 3.0W R060 1% 25PPM 4K RLTE Part #5787170-7  
68 50SR R/A RCPT ASSY,RDSN L/FTE Part #5650913-5  
ASSY,PIN,EUROCARD,TYPE C,LEAD-TE Part #5499786-1  
A/L UNIV HDR 10P RA LAT

## Documents

### Product Drawings

[ASSY,RECEPT,EUROCARD,TYPE R,LE](#)

English

### CAD Files

[3D PDF](#)

3D

### Customer View Model

[ENG\\_CVM\\_CVM\\_5650895-4\\_A.2d\\_dxf.zip](#)



English

**Customer View Model**

[ENG\\_CVM\\_CVM\\_5650895-4\\_A.3d\\_igs.zip](#)

English

**Customer View Model**

[ENG\\_CVM\\_CVM\\_5650895-4\\_A.3d\\_stp.zip](#)

English

By downloading the CAD file I accept and agree to the [Terms and Conditions](#) of use.

---

**Product Specifications**

[Application Specification](#)

English

---

**Agency Approvals**

[UL](#)

English

Looking for pricing, stock, or lifecycle information?

Click below to explore more details on WIN SOURCE:

[View 5650895-4 on WIN SOURCE](#)

[TE Connectivity Information](#)

### Optimize Your Supply Chain with WIN SOURCE Solutions

- ✓ Global Sourcing Solution
- ✓ Obsolete Management
- ✓ Cost Control Management
- ✓ Shortage Management
- ✓ Alternative Solution
- ✓ Excess Inventory Management