



THE DATASHEET OF
5601250700





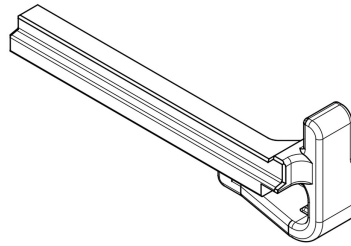
Part Number : [5601250700](#)

Product Description : DuraClik Wire-to-Board Independent Secondary Lock (ISL) Retainer, 7 Circuits, Gray

Series Number : 560125

Status : Active

Product Category : Connector Accessories



Documents & Resources

Drawings

[5601250700_sd.pdf](#)

3D Models and Design Files

[5601250700_stp.zip](#)

Specifications

[AS-560123-001-001.pdf](#)

[PS-560123-001-001.pdf \(Tin Plating\)](#)

[PS-560123-003-001.pdf \(Tin Plating\)](#)

[5601240131-000.pdf \(Gold Plating\)](#)

Product Environment Compliance

Compliance

GADSL/IMDS	Compliant
China RoHS	Not Relevant
EU ELV	Compliant per 2000/53/EC
Low-Halogen Status	Not Low-Halogen per IEC 61249-2-21
REACH SVHC	Not Contained per D(2024)6225-DC (07 Nov 2024)
EU RoHS	Compliant per EU 2015/863

[Multiple Part Product Compliance Statements](#)

- Eu RoHS
- REACH SVHC
- Low-Halogen

[Multiple Part Industry Compliance Documents](#)

- IPC 1752A Class C
- IPC 1752A Class D
- Molex Product Compliance Declaration
- IEC-62474
- chemSHERPA (xml)

EU RoHS Certificate of Compliance

Part Details

General

Status	Active
Category	Connector Accessories
Series	560125
Description	DuraClik Wire-to-Board Independent Secondary Lock (ISL) Retainer, 7 Circuits, Gray
Application	Automotive
Component Type	Independent Secondary Lock
Product Name	DuraClik
UPC	191130507139

Physical

Circuits (Loaded)	7
Circuits (maximum)	7
Color - Resin	Gray
Lock to Mating Part	Yes
Material - Resin	PBT
Net Weight	0.078/g
Number of Rows	1
Packaging Type	Bag
Polarized to Mating Part	Yes
Temperature Range - Operating	-40° to +130°C

Use with Part(s)



Description	Part Number
-------------	-------------

DuraClik ISL Wire-to-Board Receptacle Housing, Single Row, White, 7 Circuits	<u>5601230700</u>
--	-------------------

This document was generated on Feb 13, 2025

Looking for pricing, stock, or lifecycle information?

Click below to explore more details on WIN SOURCE:

-  [View 5601250700 on WIN SOURCE](#)
-  [Molex, LLC Information](#)

Optimize Your Supply Chain with WIN SOURCE Solutions

-  Global Sourcing Solution
-  Obsolete Management
-  Cost Control Management
-  Shortage Management
-  Alternative Solution
-  Excess Inventory Management