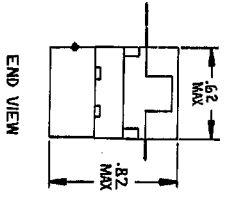
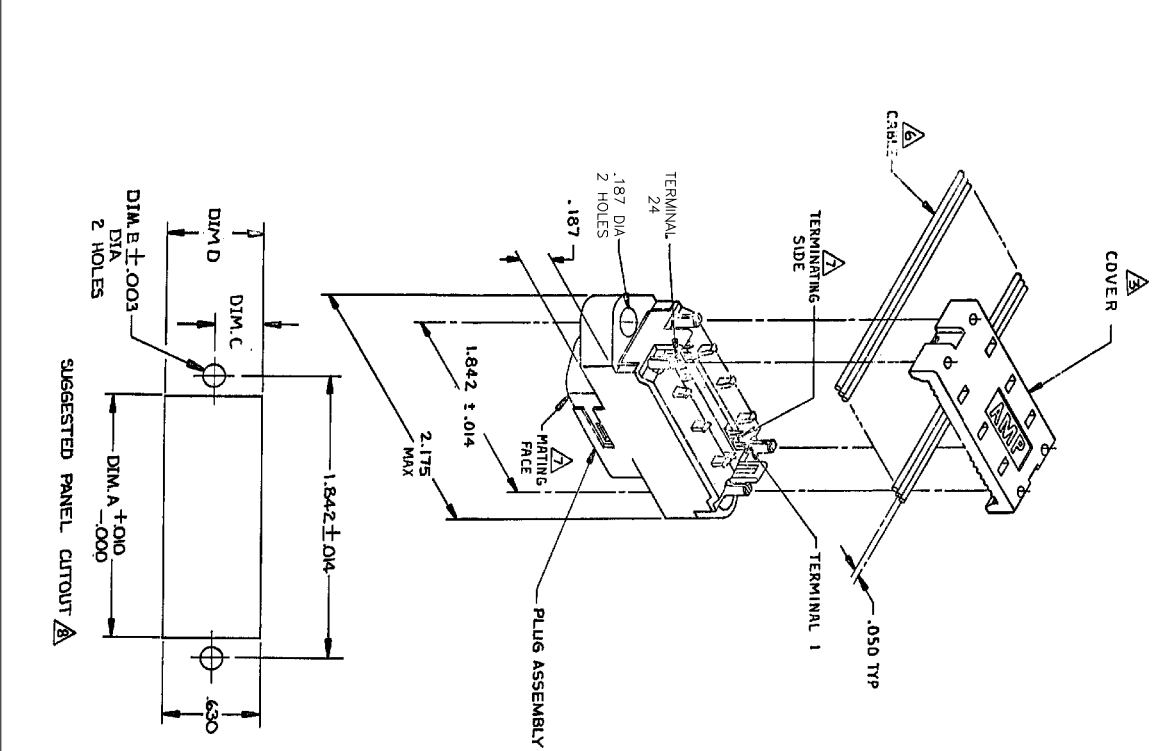




**THE DATASHEET OF**  
**554103-1**



1. THE CONTACT SURFACES OF THE TERMINALS ARE COATED WITH LUBRICANT.
- MATERIAL:  
HOUSING & COVER - THERMOPLASTIC, BLACK.  
TERMINALS - PHOS BRONZE PLATED WITH EITHER .000050 MINIMUM GOLD PLATE OR GOLD FLASH OVER PALLADIUM NICKEL PLATE. .000050 MIN TOTAL ON MATING SURFACE. GOLD FLASH PLATED ON TERMINATING SIDE. .000050 MINIMUM NICKEL UNDERPLATE OVER ENTIRE TERMINAL.
3. COVER SHOWN LOOSE BUT SHIPPED ASSEMBLED.
4. WIRE RANGE: 26 AWG SOLID THRU 30 AWG SOLID AND 28 AWG STRANDED RIBBON CABLE.
5. ALL DIMENSIONS SHOWN ARE FOR REFERENCE ONLY UNLESS OTHERWISE SPECIFIED.
6. FLAT CABLE SHALL BE FURNISHED BY CUSTOMER.
7. MATING FACE CONSISTS OF TWO ROWS OF TERMINALS ON .085 CENTERS. TERMINATING SIDE CONSISTS OF TERMINALS ON .100 CENTERS FOR AN EFFECTIVE .050 TERMINATION.
8. PANEL THICKNESS RANGE: .125 MAX FRONT PANEL MOUNTING - .062 MAX REAR PANEL MOUNTING
9. FOR MORE INFORMATION REFER TO AMP PRODUCT SPECIFICATION 108-6076 & APPLICATION SPEC 114-6030.

.620	.310	.149	1.575	REAR PANEL MOUNTING
.640	.320	.126	1.488	FRONT PANEL MOUNTING
DIM D	DIM C	DIM B	DIM A	DESCRIPTION

THIS DRAWING IS A CONTROLLED DOCUMENT.

DATE	REV	DESCRIPTION
19/06/07	1	AS SHOWN

AS SHOWN 554103-1  
DESCRIPTION PART NUMBER

DATE	REV	DESCRIPTION
19/06/07	1	AS SHOWN

1760 Electronics Corporation  
Huntington, PA 15106-5688

PLUG ASSEMBLY, 24 POSITION  
PANEL MOUNTING, LDM PROFILE,  
CHAMP LATCH

APPLICATOR SPEC: A2100779  
SCALE: 2:1  
SHEET: 1 OF 1  
REV: J

DATE	REV	DESCRIPTION
17/06/08	1	REVISED FOR ISO-9001:2007

## Looking for pricing, stock, or lifecycle information?

Click below to explore more details on WIN SOURCE:

 [View 554103-1 on WIN SOURCE](#)

 [TE Connectivity](#) Information

## Optimize Your Supply Chain with WIN SOURCE Solutions

-  Global Sourcing Solution
-  Obsolete Management
-  Cost Control Management
-  Shortage Management
-  Alternative Solution
-  Excess Inventory Management